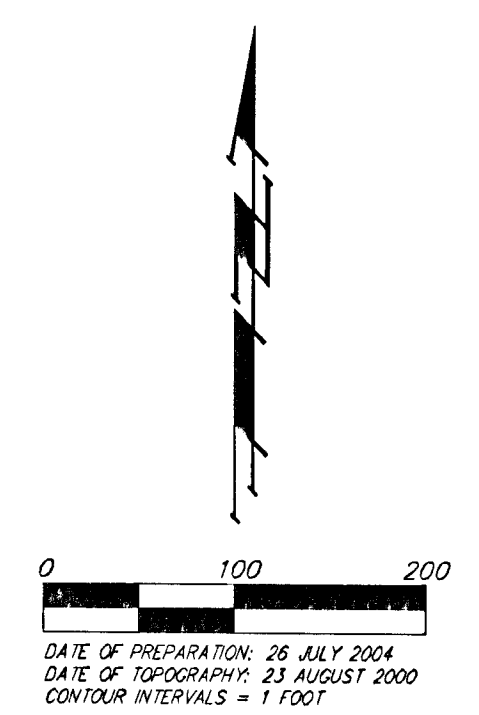
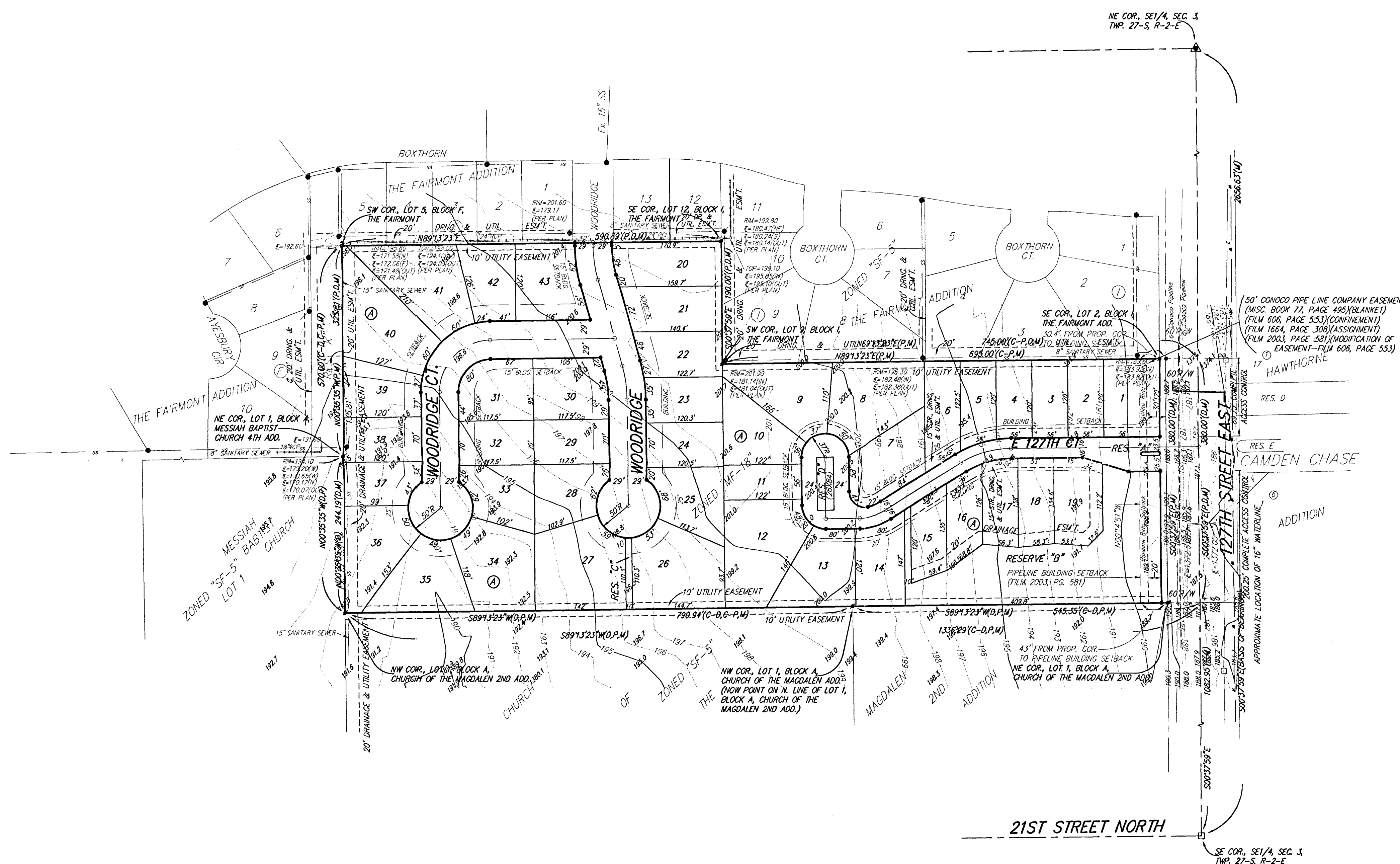


PRELIMINARY PLAT  
**THE FAIRMONT 3RD**  
 AN ADDITION TO WICHITA, SEDGWICK COUNTY, KANSAS



DATE OF PREPARATION: 26 JULY 2004  
 DATE OF TOPOGRAPHY: 21 AUGUST 2000  
 CONTOUR INTERVALS = 1 FOOT

OWNER:  
 RICHIE DEVELOPMENT CORPORATION  
 8100 E. 22ND  
 WICHITA, KS 67226  
 316-684-1300

LEGAL DESCRIPTION:  
 A REPLAT OF LOT 1, BLOCK A, THE FAIRMONT 2ND ADDITION,  
 WICHITA, SEDGWICK COUNTY, KANSAS.

BENCHMARK:  
 GREENWICH AND 21ST NORTH  
 CITY OF WICHITA BENCHMARK DISC  
 41" SOUTH AND 58" WEST OF IRON CTR. LINE BOTH  
 11.0' SW OF ASPHALT, 14.2' EAST OF FACE P.P.  
 12.0' WEST OF FACE P.P.  
 ELEVATION = 123.98 (CITY DATUM), 1361.39 NGVD

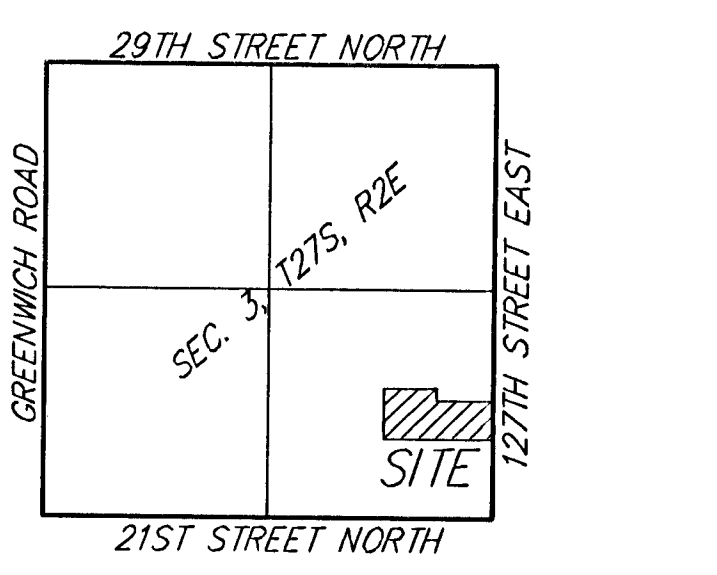
COUNTY "C" CUT, SOUTH HEADWALL,  
 1/2 MILE WEST OF 127TH ST. EAST  
 ON 37TH STREET NORTH  
 ELEV. = 185.83 (CITY DATUM), 1373.23 NGVD

TOP OF IRON - SE COR., SE 1/4, SEC. 3,  
 TWP. 27-S, R-2-E, (127TH ST. EAST &  
 21ST ST. NORTH)  
 ELEV. = 158.01 (CITY DATUM), 1385.41 NGVD

- = #4 REBAR W/ "BAUGHMAN" CAP (SET)
- = #4 REBAR W/ "BAUGHMAN" CAP (FOUND)
- = 3/4" IRON (FOUND)
- ▲ = #4 REBAR OVER STONE (FOUND)

- (M) = MEASURED
- (P) = PLATTED
- (D) = DESCRIBED
- (C-D) = CALCULATED PER DESCRIBED INFO.
- (C-P) = CALCULATED PER PLATTED INFO.

PP □ = Power Pole  
 PM □ = Pipeline Marker



VICINITY MAP

RESERVE "A" IS RESERVED FOR ENTRY MONUMENTS, LANDSCAPING,  
 DRAINAGE PURPOSES, OPEN SPACE, STREETS, AND UTILITIES.

RESERVE "B" IS RESERVED FOR LAKES, DRAINAGE PURPOSES, OPEN  
 SPACES, BERMS, AND UTILITIES AS CONFINED TO EASEMENTS.

RESERVE "C" IS RESERVED OPEN SPACE, LANDSCAPING, AND PEDESTRIAN  
 ACCESS.

RESERVE "D" IS RESERVED FOR OPEN SPACE, LANDSCAPING, STREETS,  
 PARKING, DRAINAGE PURPOSES, AND UTILITIES.

26 JULY 2004