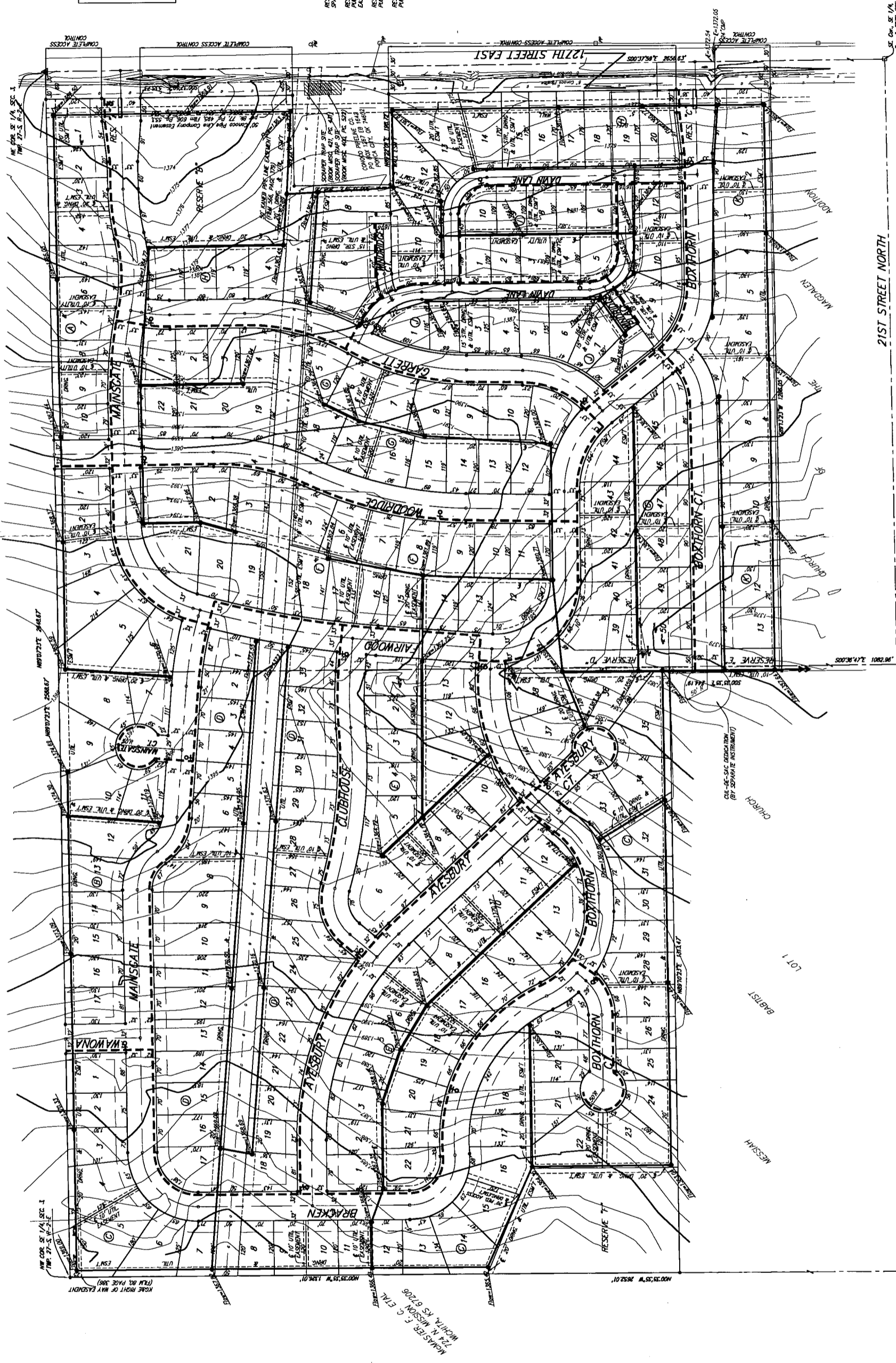


UTILITY PLAN THE FAIRMONT



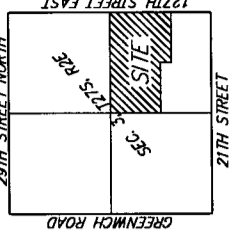
LEGEND

--- (6" Unless Noted Otherwise)	Proposed Water Line
--- (8" Unless Noted Otherwise)	Proposed Sanitary Sewer Line
--- (6" Unless Noted Otherwise)	Proposed Sanitary Sewer Manhole
•	Proposed Fire Hydrant

RESOURCES "1" AND "2" ARE RESERVED FOR MONUMENTS, LANDSCAPING, OPEN SPACE, AND UTILITIES.
 RESOURCE "3" IS RESERVED FOR LANDSCAPING, OPEN SPACE, LAKES, DRAINAGE, PARADES, UTILITIES AS COMPARED TO EXISTING, AND PRELIMINARY AS COMPARED TO EXISTING.
 RESOURCES "4" AND "5" ARE RESERVED FOR LANDSCAPING, OPEN SPACE, DRAINAGE, PARADES, AND UTILITIES AS COMPARED TO EXISTING.
 RESOURCE "6" IS RESERVED FOR LANDSCAPING, OPEN SPACE, LAKES, DRAINAGE, PARADES, AND UTILITIES AS COMPARED TO EXISTING.



SCALE: 1" = 100'
 DATE OF PREPARATION: 11 SEPTEMBER 2000



- VICINITY MAP**
- = Baughman Rebar Set
 - = Baughman Rebar Found
 - △ = Energy Rebar Found
 - ▲ = Energy Rebar Found
 - = Rebar Found over Stone
 - = Power Pole
 - ◆ = Plastic Marker

7 NOVEMBER 2000
BAUGHMAN COMPANY P. A.
 ENGINEERING, SURVEYING & PLANNING
 1114-1122-1124 - 1125 - 1126 - 1127 - 1128 - 1129 - 1130 - 1131 - 1132 - 1133 - 1134 - 1135 - 1136 - 1137 - 1138 - 1139 - 1140 - 1141 - 1142 - 1143 - 1144 - 1145 - 1146 - 1147 - 1148 - 1149 - 1150 - 1151 - 1152 - 1153 - 1154 - 1155 - 1156 - 1157 - 1158 - 1159 - 1160 - 1161 - 1162 - 1163 - 1164 - 1165 - 1166 - 1167 - 1168 - 1169 - 1170 - 1171 - 1172 - 1173 - 1174 - 1175 - 1176 - 1177 - 1178 - 1179 - 1180 - 1181 - 1182 - 1183 - 1184 - 1185 - 1186 - 1187 - 1188 - 1189 - 1190 - 1191 - 1192 - 1193 - 1194 - 1195 - 1196 - 1197 - 1198 - 1199 - 1200