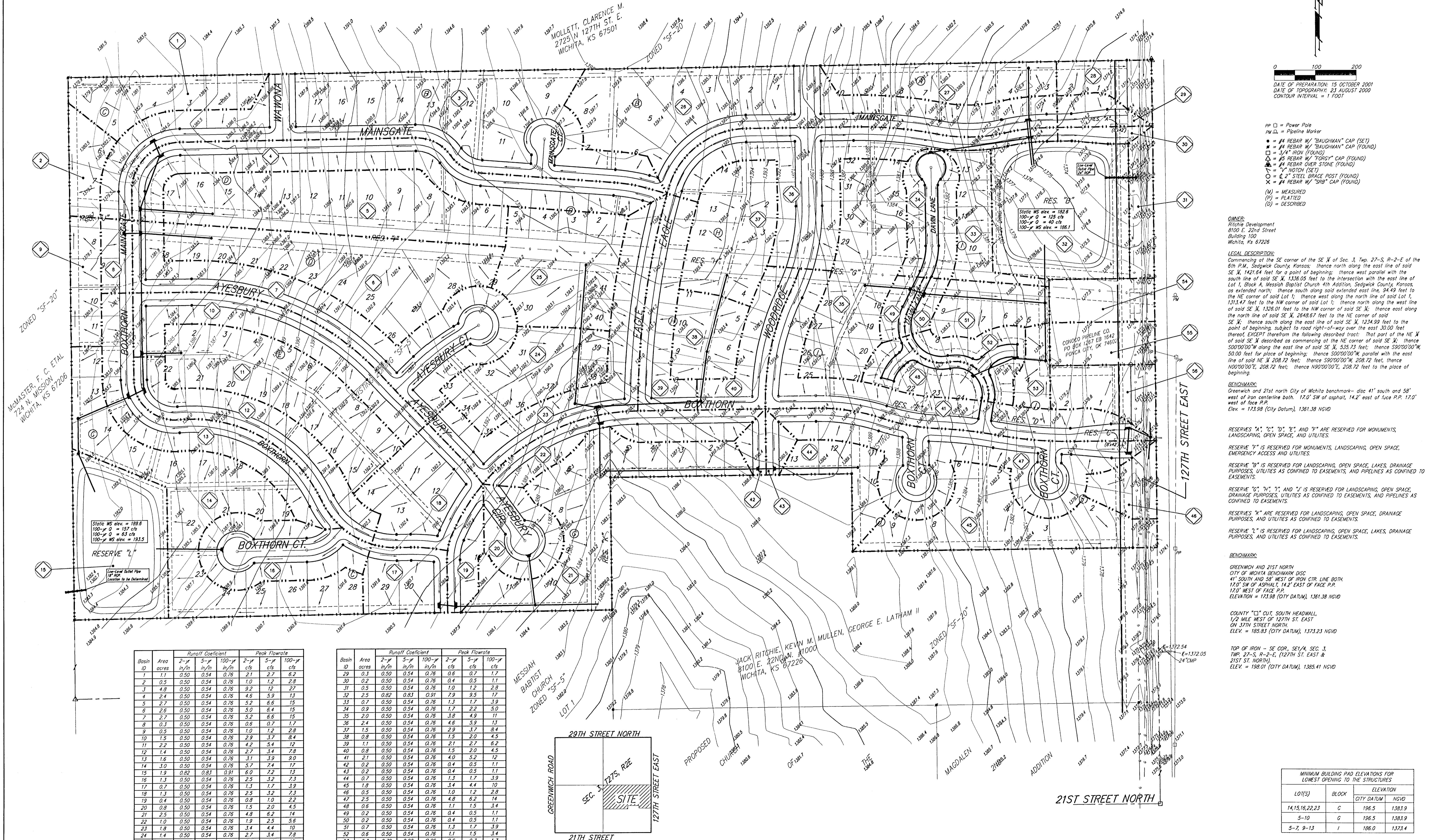


# DRAINAGE CONCEPT THE FAIRMONT AN ADDITION TO WICHITA, SEDGWICK COUNTY, KANSAS



DATE OF PREPARATION: 15 OCTOBER 2001  
DATE OF TOPOGRAPHY: 23 AUGUST 2000  
CONTOUR INTERVAL = 1 FOOT

- PP □ = Power Pole
- PM □ = Pipeline Marker
- = #4 REBAR W/ "BAUGHMAN" CAP (SET)
- = 1/4" IRON (FOUND)
- ▲ = #5 REBAR W/ "TODDY" CAP (FOUND)
- △ = #4 REBAR OVER STONE (FOUND)
- ⊙ = 1/2" NOTCH (SET)
- ⊗ = 6" 2" STEEL BRACE POST (FOUND)
- ⊕ = #4 REBAR W/ "SRB" CAP (FOUND)
- (M) = MEASURED
- (P) = PLATTED
- (D) = DESCRIBED

**OWNER:**  
Ritche Development,  
8100 E. 22nd Street  
Building 100  
Wichita, KS 67226

**LEGAL DESCRIPTION:**  
Commencing at the SE corner of the SE 1/4 of Sec. 3, Twp. 27-S, R-2-E of the 6th P.M., Sedgwick County, Kansas; thence north along the east line of said SE 1/4 1421.64 feet for a point of beginning; thence west parallel with the south line of said SE 1/4 1336.05 feet to the intersection with the east line of Lot 1, Block A, Messiah Baptist Church 4th Addition, Sedgwick County, Kansas, as extended north; thence south along said extended east line, 94.49 feet to the NE corner of said Lot 1; thence west along the north line of said Lot 1, 1313.47 feet to the NW corner of said Lot 1; thence north along the west line of said SE 1/4 1326.01 feet to the NW corner of said SE 1/4; thence east along the north line of said SE 1/4 2648.87 feet to the NE corner of said SE 1/4; thence south along the east line of said SE 1/4 1234.99 feet to the point of beginning, subject to road right-of-way over the east 30.00 feet thereof, EXCEPT therefrom the following described tract: That part of the NE 1/4 of said SE 1/4 described as commencing at the NE corner of said SE 1/4; thence S00°00'00"W along the east line of said SE 1/4 535.75 feet; thence S90°00'00"W, 50.00 feet for place of beginning; thence S00°00'00"W, parallel with the east line of said SE 1/4 208.72 feet; thence S90°00'00"W, 208.72 feet; thence N00°00'00"E, 208.72 feet to the place of beginning.

**BENCHMARK:**  
Greenwich and 21st North City of Wichita benchmark—disc 41" south and 58" west of iron cast-iron both. 17.0" SW of asphalt, 14.2" east of face P.P. 17.0" west of face P.P.  
Elev. = 1372.05 (City Datum), 1361.38 NGVD

RESERVES "A", "C", "D", "E", and "F" ARE RESERVED FOR MONUMENTS, LANDSCAPING, OPEN SPACE, AND UTILITIES.

RESERVE "G" IS RESERVED FOR MONUMENTS, LANDSCAPING, OPEN SPACE, EMERGENCY ACCESS AND UTILITIES.

RESERVE "H" IS RESERVED FOR LANDSCAPING, OPEN SPACE, LAKES, DRAINAGE PURPOSES, UTILITIES AS CONFINED TO EASEMENTS, AND PIPELINES AS CONFINED TO EASEMENTS.

RESERVE "I", "J", "K", and "L" IS RESERVED FOR LANDSCAPING, OPEN SPACE, DRAINAGE PURPOSES, UTILITIES AS CONFINED TO EASEMENTS, AND PIPELINES AS CONFINED TO EASEMENTS.

RESERVES "M" ARE RESERVED FOR LANDSCAPING, OPEN SPACE, DRAINAGE PURPOSES, AND UTILITIES AS CONFINED TO EASEMENTS.

RESERVE "N" IS RESERVED FOR LANDSCAPING, OPEN SPACE, LAKES, DRAINAGE PURPOSES, AND UTILITIES AS CONFINED TO EASEMENTS.

**BENCHMARK:**

GREENWICH AND 21ST NORTH  
CITY OF WICHITA BENCHMARK DISC  
41" SOUTH AND 58" WEST OF IRON CTR. LINE BOTH  
17.0" SW OF ASPHALT, 14.2" EAST OF FACE P.P.  
17.0" WEST OF FACE P.P.  
ELEVATION = 1372.05 (CITY DATUM), 1361.38 NGVD

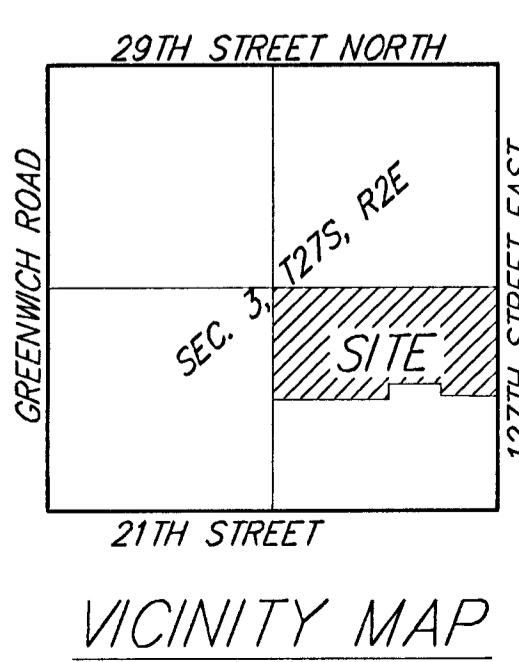
COUNTY "C" CUT, SOUTH HEADWALL,  
1/2 MILE WEST OF 127TH ST. EAST  
ON 37TH STREET NORTH  
ELEV. = 165.83 (CITY DATUM), 1373.23 NGVD

TOP OF IRON - SE COR., SE 1/4, SEC. 3,  
TWP. 27-S, R-2-E, (127TH ST. EAST &  
21ST ST. NORTH).  
ELEV. = 198.01 (CITY DATUM), 1365.41 NGVD

| MINIMUM BUILDING PAD ELEVATIONS FOR LOWEST OPENING TO THE STRUCTURES |       |                 |
|--|-------|-----------------|
| LOT(S)   | BLOCK | ELEVATION       |
|  |       | CITY DATUM NGVD |
| 14,15,16,22,23   | C     | 196.5 1383.9    |
| 5-10   | G     | 196.5 1383.9    |
| 5-7, 9-13  | I     | 186.0 1373.4    |

| Basin ID | Area acres | Runoff Coefficient |            |              | Peak Flowrate |          |            |
|----------|------------|--------------------|------------|--------------|---------------|----------|------------|
|          |            | 2-yr in/in         | 5-yr in/in | 100-yr in/in | 2-yr cfs      | 5-yr cfs | 100-yr cfs |
| 1        | 1.1        | 0.50               | 0.54       | 0.76         | 2.1           | 2.7      | 6.2        |
| 2        | 0.5        | 0.50               | 0.54       | 0.76         | 1.0           | 1.2      | 2.8        |
| 3        | 4.8        | 0.50               | 0.54       | 0.76         | 9.2           | 12       | 27         |
| 4        | 2.4        | 0.50               | 0.54       | 0.76         | 4.6           | 5.9      | 13         |
| 5        | 2.7        | 0.50               | 0.54       | 0.76         | 5.2           | 6.6      | 15         |
| 6        | 2.6        | 0.50               | 0.54       | 0.76         | 5.0           | 6.4      | 15         |
| 7        | 2.7        | 0.50               | 0.54       | 0.76         | 5.2           | 6.6      | 15         |
| 8        | 0.3        | 0.50               | 0.54       | 0.76         | 0.6           | 0.7      | 1.7        |
| 9        | 0.5        | 0.50               | 0.54       | 0.76         | 1.0           | 1.2      | 2.8        |
| 10       | 1.5        | 0.50               | 0.54       | 0.76         | 2.9           | 3.7      | 8.4        |
| 11       | 2.2        | 0.50               | 0.54       | 0.76         | 4.2           | 5.4      | 12         |
| 12       | 1.4        | 0.50               | 0.54       | 0.76         | 2.7           | 3.4      | 7.8        |
| 13       | 1.6        | 0.50               | 0.54       | 0.76         | 3.1           | 3.9      | 9.0        |
| 14       | 3.0        | 0.50               | 0.54       | 0.76         | 5.7           | 7.4      | 17         |
| 15       | 1.9        | 0.82               | 0.83       | 0.91         | 6.0           | 7.2      | 13         |
| 16       | 1.3        | 0.50               | 0.54       | 0.76         | 2.5           | 3.2      | 7.3        |
| 17       | 0.7        | 0.50               | 0.54       | 0.76         | 1.3           | 1.7      | 3.9        |
| 18       | 1.3        | 0.50               | 0.54       | 0.76         | 2.5           | 3.2      | 7.3        |
| 19       | 0.4        | 0.50               | 0.54       | 0.76         | 0.8           | 1.0      | 2.2        |
| 20       | 0.9        | 0.50               | 0.54       | 0.76         | 1.5           | 2.0      | 4.5        |
| 21       | 2.5        | 0.50               | 0.54       | 0.76         | 4.8           | 6.2      | 14         |
| 22       | 1.0        | 0.50               | 0.54       | 0.76         | 1.9           | 2.5      | 5.6        |
| 23       | 1.8        | 0.50               | 0.54       | 0.76         | 3.4           | 4.4      | 10         |
| 24       | 1.4        | 0.50               | 0.54       | 0.76         | 2.7           | 3.4      | 7.8        |
| 25       | 1.8        | 0.50               | 0.54       | 0.76         | 3.4           | 4.4      | 10         |
| 26       | 3.7        | 0.50               | 0.54       | 0.76         | 7.1           | 9.1      | 21         |
| 27       | 1.1        | 0.50               | 0.54       | 0.76         | 2.1           | 2.7      | 6.2        |
| 28       | 0.5        | 0.50               | 0.54       | 0.76         | 1.0           | 1.2      | 2.8        |

| Basin ID | Area acres | Runoff Coefficient |            |              | Peak Flowrate |          |            |
|----------|------------|--------------------|------------|--------------|---------------|----------|------------|
|          |            | 2-yr in/in         | 5-yr in/in | 100-yr in/in | 2-yr cfs      | 5-yr cfs | 100-yr cfs |
| 29       | 0.3        | 0.50               | 0.54       | 0.76         | 0.6           | 0.7      | 1.7        |
| 30       | 0.2        | 0.50               | 0.54       | 0.76         | 0.4           | 0.5      | 1.1        |
| 31       | 0.5        | 0.50               | 0.54       | 0.76         | 1.0           | 1.2      | 2.8        |
| 32       | 2.5        | 0.82               | 0.83       | 0.91         | 7.9           | 9.5      | 17         |
| 33       | 0.7        | 0.50               | 0.54       | 0.76         | 1.3           | 1.7      | 3.9        |
| 34       | 0.9        | 0.50               | 0.54       | 0.76         | 1.7           | 2.2      | 5.0        |
| 35       | 2.0        | 0.50               | 0.54       | 0.76         | 3.8           | 4.9      | 11         |
| 36       | 2.4        | 0.50               | 0.54       | 0.76         | 4.6           | 5.9      | 13         |
| 37       | 1.5        | 0.50               | 0.54       | 0.76         | 2.9           | 3.7      | 8.4        |
| 38       | 0.9        | 0.50               | 0.54       | 0.76         | 1.5           | 2.0      | 4.5        |
| 39       | 1.1        | 0.50               | 0.54       | 0.76         | 2.1           | 2.7      | 6.2        |
| 40       | 0.8        | 0.50               | 0.54       | 0.76         | 1.5           | 2.0      | 4.5        |
| 41       | 2.1        | 0.50               | 0.54       | 0.76         | 4.0           | 5.2      | 12         |
| 42       | 0.2        | 0.50               | 0.54       | 0.76         | 0.4           | 0.5      | 1.1        |
| 43       | 0.2        | 0.50               | 0.54       | 0.76         | 0.4           | 0.5      | 1.1        |
| 44       | 0.7        | 0.50               | 0.54       | 0.76         | 1.3           | 1.7      | 3.9        |
| 45       | 1.8        | 0.50               | 0.54       | 0.76         | 3.4           | 4.4      | 10         |
| 46       | 0.5        | 0.50               | 0.54       | 0.76         | 1.0           | 1.2      | 2.8        |
| 47       | 2.5        | 0.50               | 0.54       | 0.76         | 4.8           | 6.2      | 14         |
| 48       | 0.6        | 0.50               | 0.54       | 0.76         | 1.1           | 1.5      | 3.4        |
| 49       | 0.2        | 0.50               | 0.54       | 0.76         | 0.4           | 0.5      | 1.1        |
| 50       | 0.2        | 0.50               | 0.54       | 0.76         | 0.4           | 0.5      | 1.1        |
| 51       | 0.7        | 0.50               | 0.54       | 0.76         | 1.3           | 1.7      | 3.9        |
| 52       | 0.8        | 0.50               | 0.54       | 0.76         | 1.5           | 2.0      | 4.5        |
| 53       | 0.3        | 0.70               | 0.82       | 0.88         | 0.6           | 0.7      | 1.7        |
| 54       | 0.6        | 0.50               | 0.54       | 0.76         | 1.1           | 1.5      | 3.4        |
| 55       | 0.6        | 0.50               | 0.54       | 0.76         | 1.1           | 1.5      | 3.4        |
| 56       | 0.8        | 0.50               | 0.54       | 0.76         | 1.5           | 2.0      | 4.5        |



MONASTER, F.C. ET AL  
724 N. MISSION  
WICHITA, KS 67206

MOLLETT, CLARENCE M.  
2725 N. 127TH ST. E.  
WICHITA, KS 67501