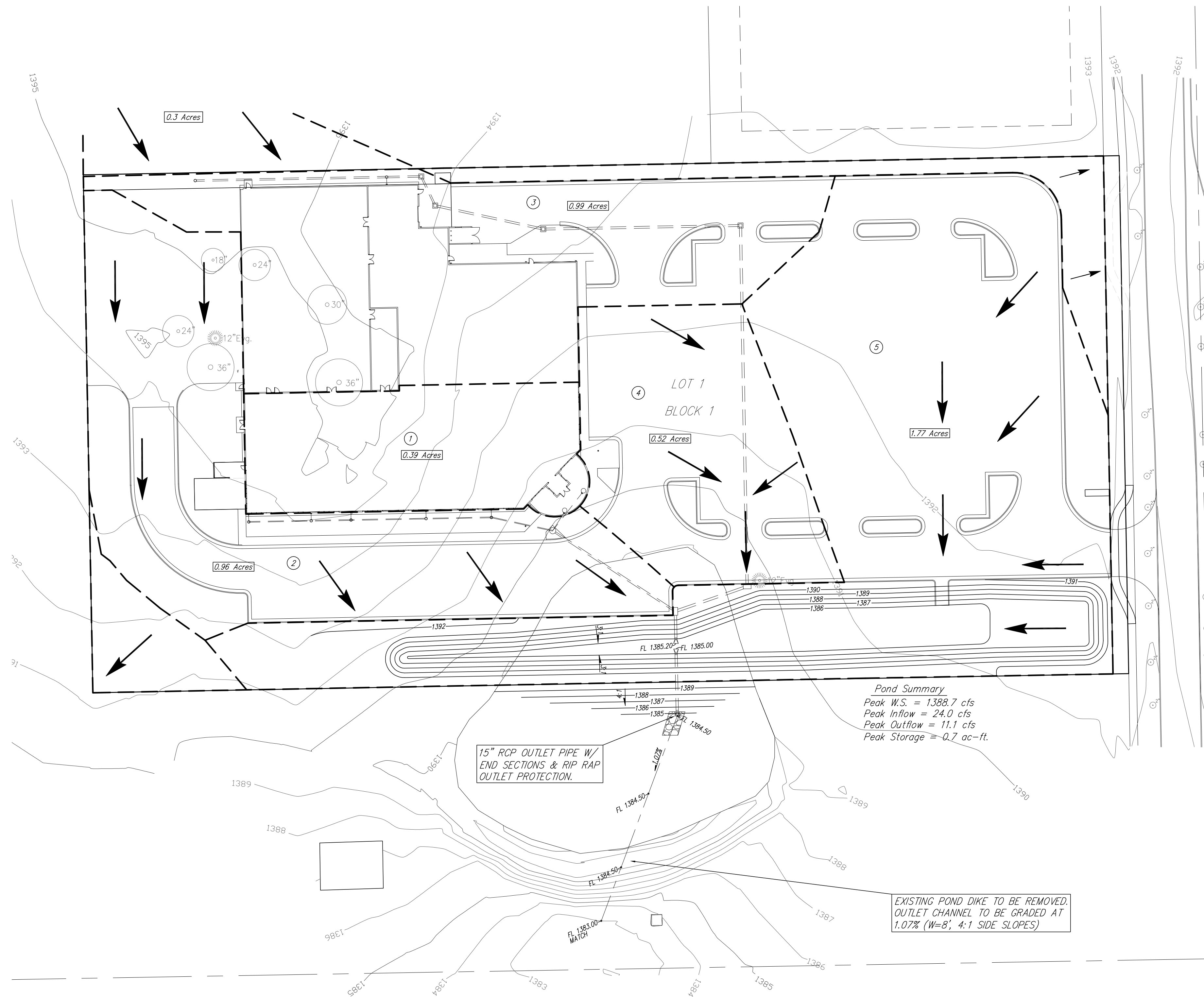


Drainage Plan

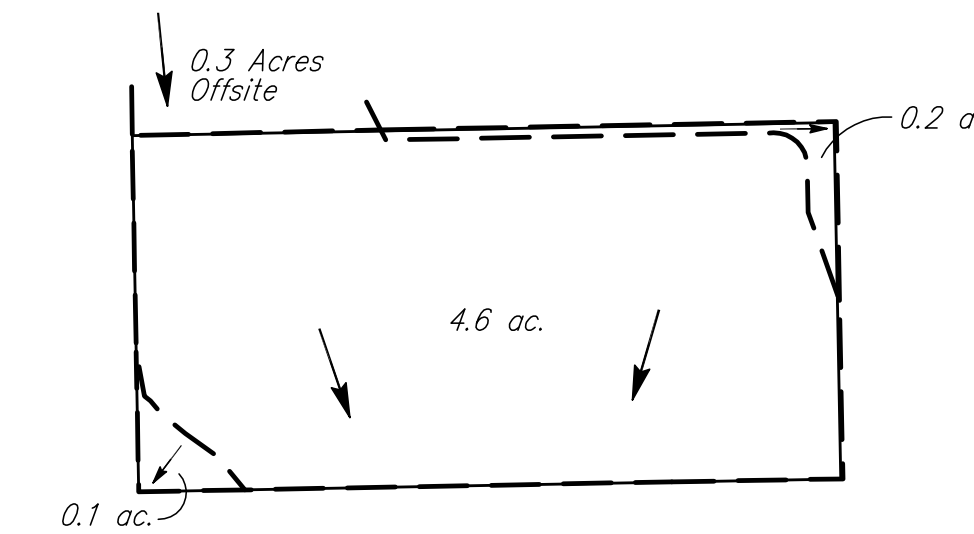
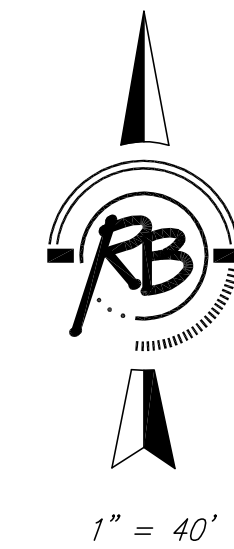
FLIGHTSAFETY SECOND ADDITION

Sedgwick County, Kansas

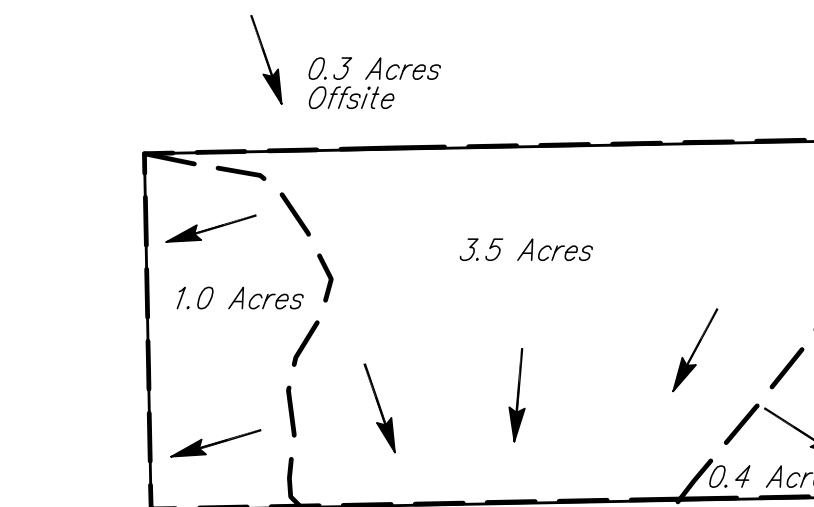
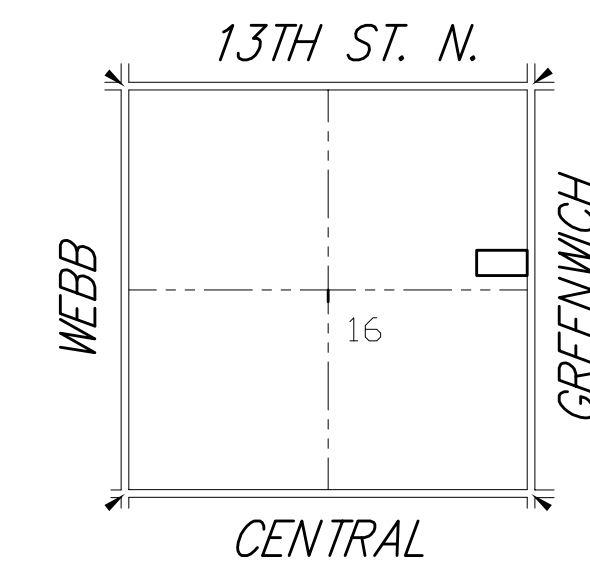


GREENWICH ROAD

NODE	AREA	TC	I	C	Q100
1	0.39	15	7.37	0.95	2.7
2	0.96	15	7.37	0.9	6.4
3	0.99	15	7.37	0.9	6.6
4	0.52	15	7.37	0.9	3.4
5	1.77	15	7.37	0.9	11.7
Offsite	0.3	15	7.37	0.63	1.4



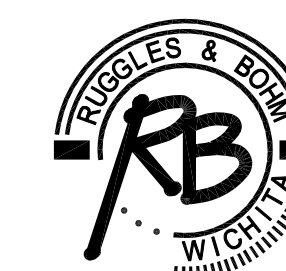
PROPOSED DRAINAGE PATTERNS



EXISTING DRAINAGE PATTERNS

BENCH MARK: CITY OF WICHITA BENCH MARK AT GREENWICH AND 9TH STREET NORTH 47.60 FEET EAST OF THE CENTERLINE OF GREENWICH AND 4.00 FEET SOUTH OF THE 1/2 SECTION LINE ELEVATION = 1389.18 (NGVD29)

ON-SITE BENCH MARK: CHISELED SQUARE ON THE TOP OF CURB ON THE WEST SIDE OF GREENWICH, 2.145 FEET SOUTH OF THE CENTERLINE OF 13TH STREET NORTH ELEVATION = 1391.88 (NGVD29)



Ruggles & Bohm, P.A.
Engineering, Surveying, Land Planning

924 North Main (316) 264-8008
Wichita, Kansas 67203 (316) 264-4621 fax
www.rbkansas.com E-mail: info@rbkansas.com