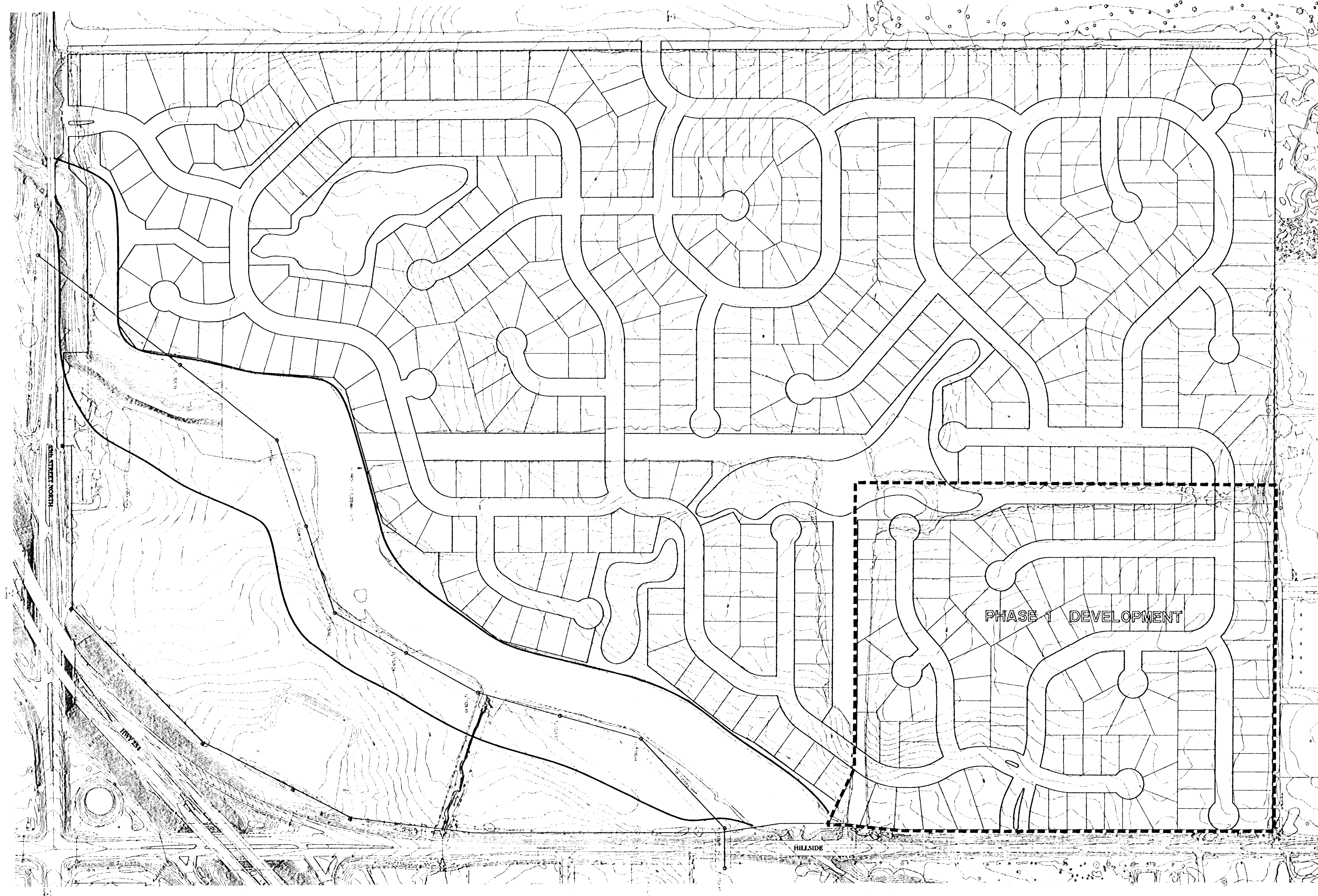
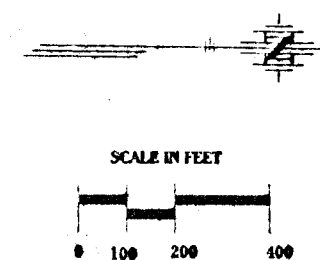


G:\APPS\DCAP\748\SITEPLAN.dwg Thu Sep 26 13:35:25 2002 PDE & ASSOCIATES OF KANSAS INC., BERNARD KULLA



^{FALCS}
FALCON RIDGE SITE PLAN
an Addition to Wichita, Sedgwick County, Kansas



PE PDE ASSOCIATES OF KANSAS, INC.
CONSULTING ENGINEERS
1000 S. GARDNER, SUITE 100, WICHITA, KS 67202-1000