

DRAINAGE PLAN FAISSAL ADDITION

Wichita, Sedgwick County, Kansas



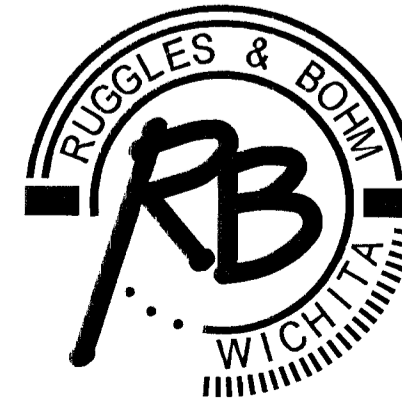
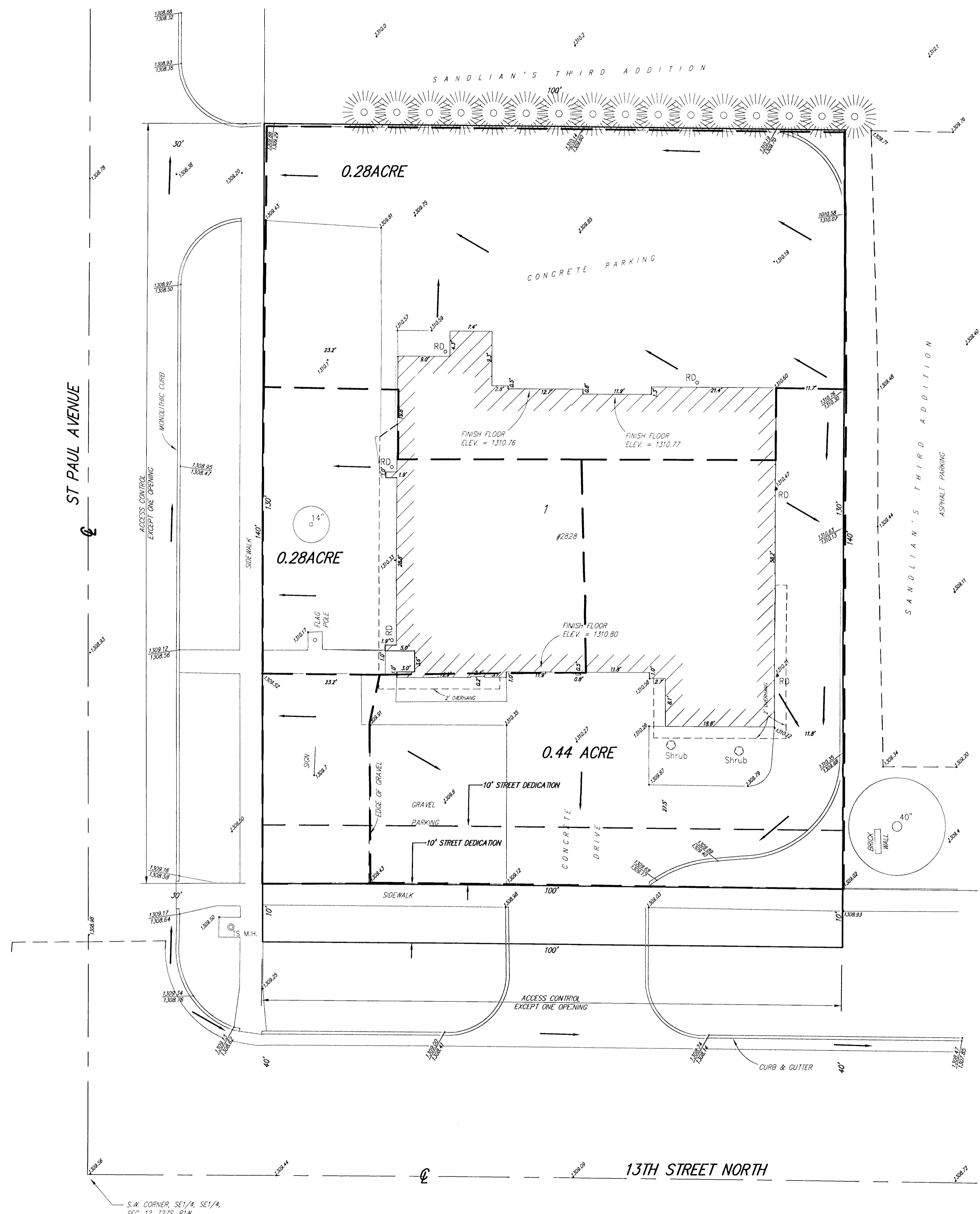
FLOOD ZONE:
According to the FEMA/FIRM Community Panel No. 200328 0010 B, effective May 15, 1986; the property shown hereon is located in Zone B, an area between the limits of 100-year flood and 500-year flood.

GROSS AREA:
13,999.2 Sq. Ft.±
0.32 Acres±

DATE OF TOPOGRAPHY:
DECEMBER 1, 2004 – DECEMBER 7, 2004

BENCH MARK: COW BENCHMARK AT THE NORTHEAST CORNER OF INTERSECTION OF 13TH ST. N. AND MERIDIAN, S.W. CORNER OF TRAFFIC SIGNAL LIGHT POLE 40.5± N. OF CENTER LINE AND 21.4± E. OF CENTER LINE ELEV.=1305.94 (M.S.L.)

ON-SITE BENCH MARK: CHISELED "E" ON THE TOP OF CURB ON THE NORTH CURB RETURN AT THE N.E. CORNER OF 13TH ST. N. & ST. PAUL ELEV.=1309.26 (M.S.L.)



Ruggles & Bohm, P.A.
Engineering, Surveying, Land Planning

DRAINAGE PLAN
PROJECT NO. 2663P
JANUARY 4, 2005

924 North Main (316) 264-8008
Wichita, Kansas 67203 (316) 264-4621 fax
www.rbkansas.com E-mail: info@rbkansas.com