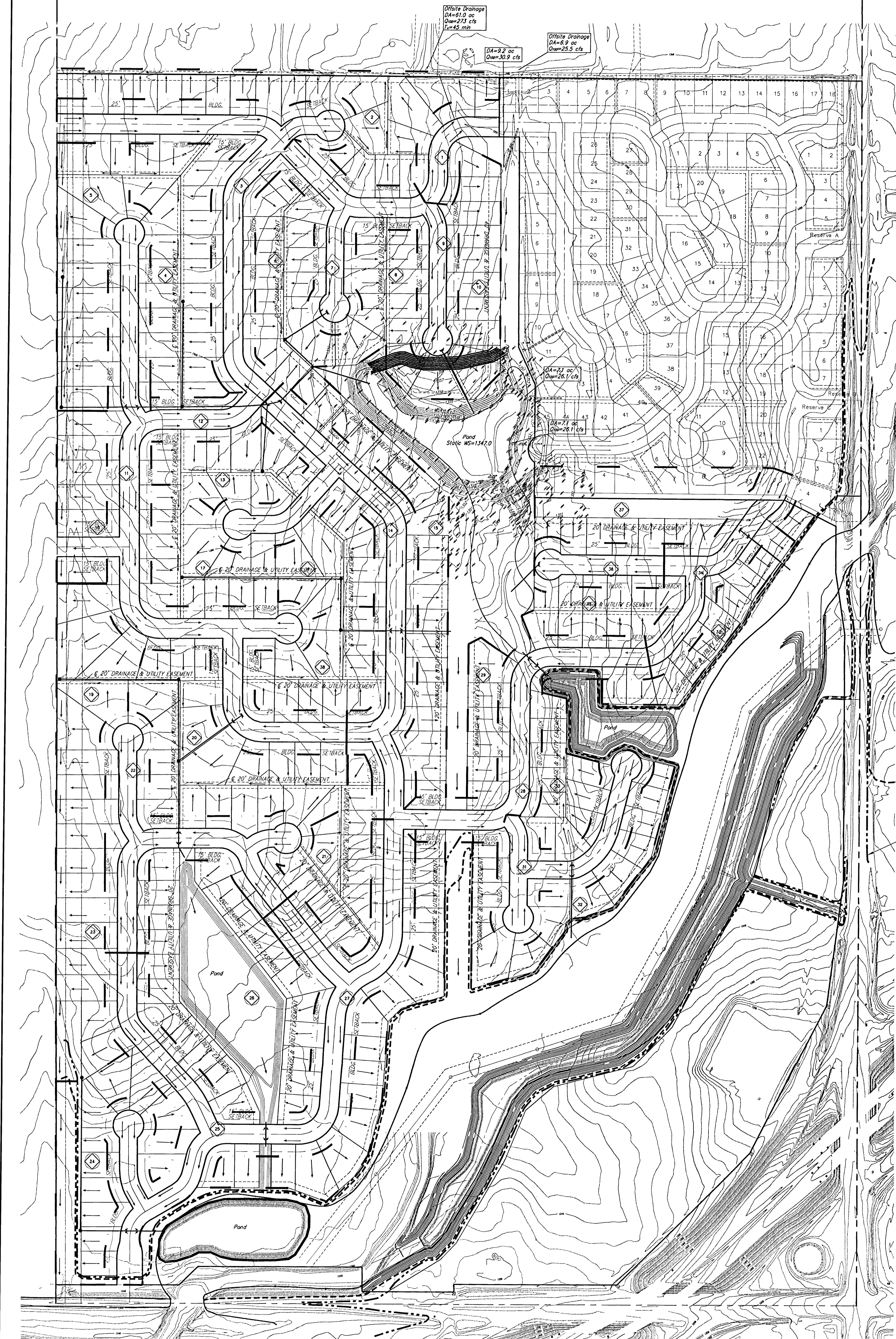


**DRAINAGE CONCEPT  
FALCON FALLS 2ND ADDITION  
WICHITA, SEDGWICK COUNTY, KANSAS**



Off-site Drainage  
DA=61.0 ac  
Q=23 cfs  
S=4.5 m/s

Off-site Drainage  
DA=3.2 ac  
Q=30.9 cfs

Off-site Drainage  
DA=4.9 ac  
Q=25.5 cfs

Off-site Drainage  
DA=24 ac  
Q=26.7 cfs

Off-site Drainage  
DA=21 ac  
Q=26.7 cfs

FEMA Floodway

NOTE: Depicted FEMA Floodway and Floodplain lines are per CLM&T Case #04-07-1016

FEMA 100-yr Floodplain

FEMA 500-yr Floodplain

Basin ID	Area acres	Flowrates		
		2-yr cfs	10-yr cfs	100-yr cfs
1	1.2	2.3	3.9	6.7
2	4.8	9.2	16	27
3	5.7	11	18	32
4	4.3	8.2	14	24
5	3.9	7.3	13	22
6	2.7	5.2	8.7	15
7	3.1	5.9	10	17
8	1.9	3.8	6.1	11
9	1.8	3.4	5.8	10
10	1.5	2.9	4.9	8.4
11	8.9	17	29	50
12	1.2	2.3	3.9	6.7
13	2.0	3.8	6.5	11
14	0.7	1.3	2.2	3.8
15	3.6	6.9	12	20
16	2.1	4.0	6.8	12
17	2.6	5.0	8.4	15
18	1.7	3.3	5.5	9.5
19	3.3	6.3	11	18
20	4.9	9.4	16	27
21	2.2	4.2	7.1	12
22	5.5	11	18	31
23	2.7	5.2	8.7	15
24	3.4	6.5	11	19
25	4.3	8.4	14	24
26	1.3	2.4	4.0	7.0
27	2.7	5.2	8.7	15
28	4.0	7.7	13	22
29	1.2	2.3	3.9	6.7
30	1.6	3.1	5.2	9.0
31	3.1	5.9	10	17
32	2.7	5.2	8.7	15
33	1.7	3.3	5.5	9.5
34	2.8	5.4	9.1	16
35	1.5	2.9	4.9	8.4
36	1.5	2.9	4.9	8.4
37	3.7	7.1	12	21
38	2.3	4.4	7.4	13