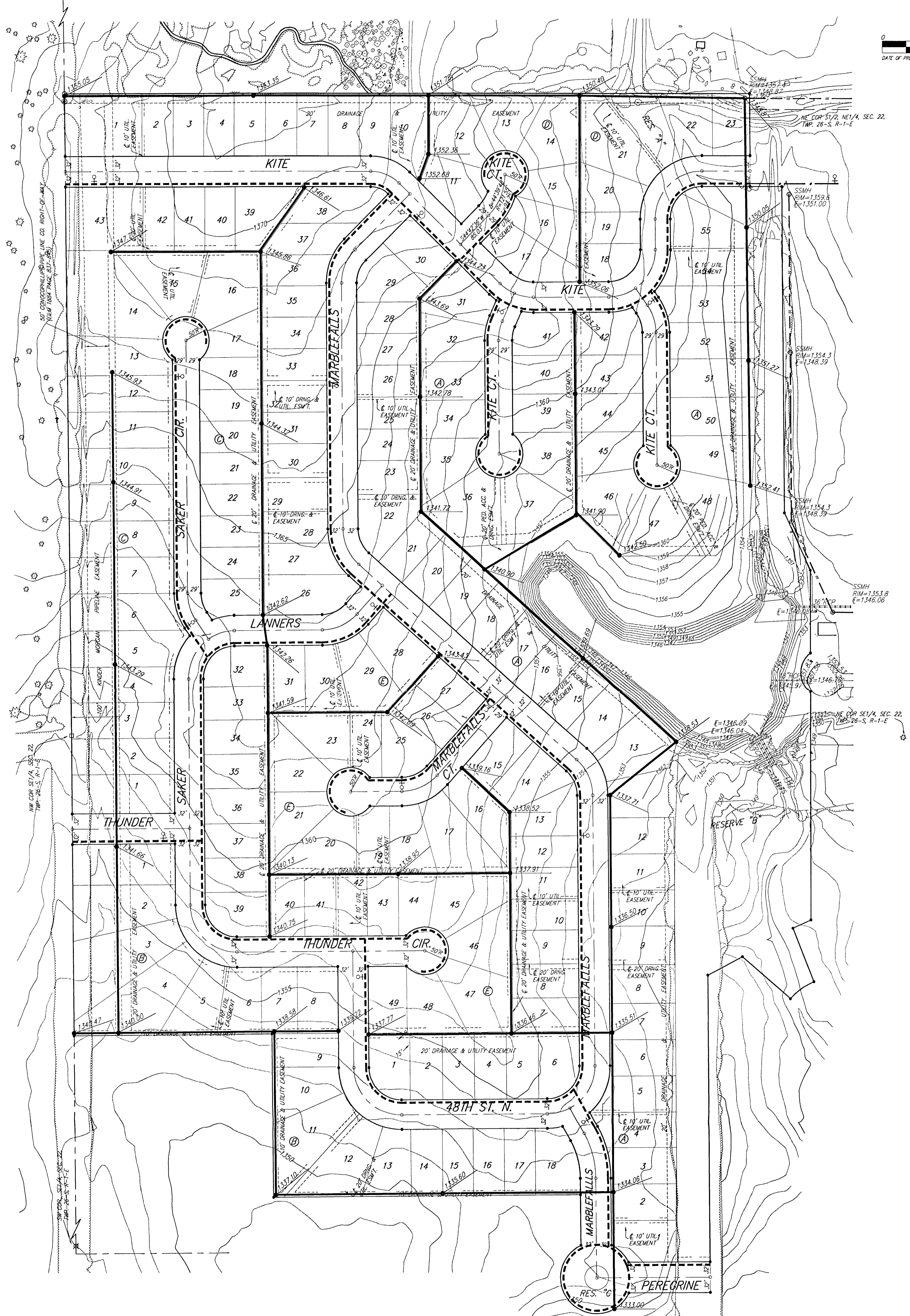
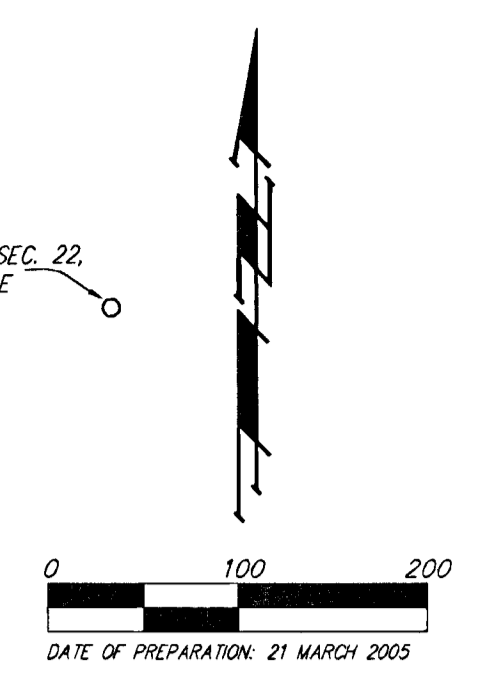


UTILITY PLAN FALCON FALLS 2ND ADDITION WICHITA, SEDGWICK COUNTY, KANSAS

NW COR. NE1/4, SEC. 22
TWP. 26-S, R-1-E

NE COR. NE1/4, SEC. 22
TWP. 26-S, R-1-E



LEGEND

	Proposed Water Line (8" Unless Noted Otherwise)
	Existing Water Line (8" Unless Noted Otherwise)
	Proposed Sanitary Sewer Line (8" Unless Noted Otherwise)
	Existing Sanitary Sewer Line (8" Unless Noted Otherwise)
	Proposed Sanitary Sewer Manhole
	Proposed Fire Hydrant
	Proposed Sanitary Sewer Flow

SE COR. SE1/4, SEC. 22
TWP. 26-S, R-1-E