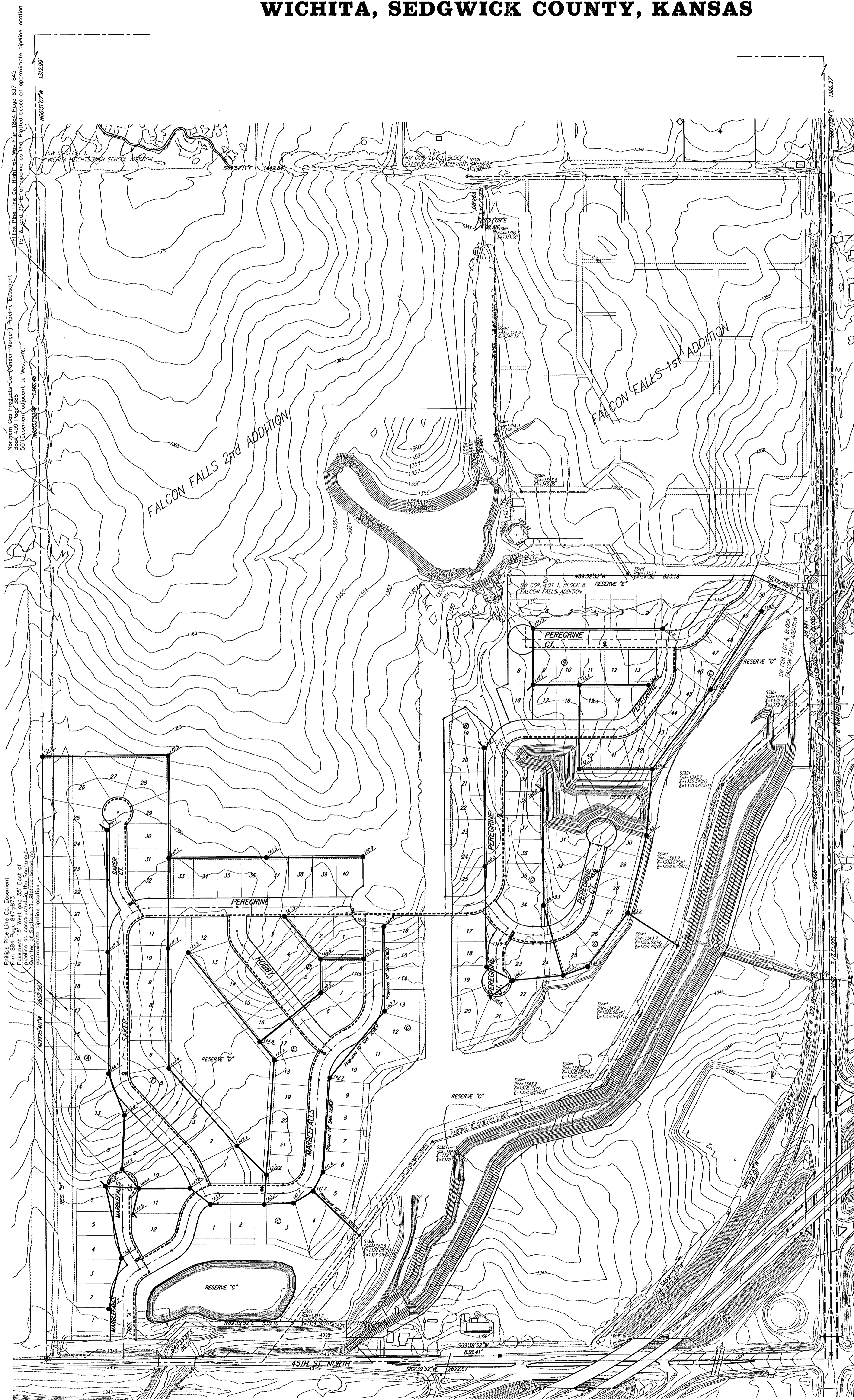
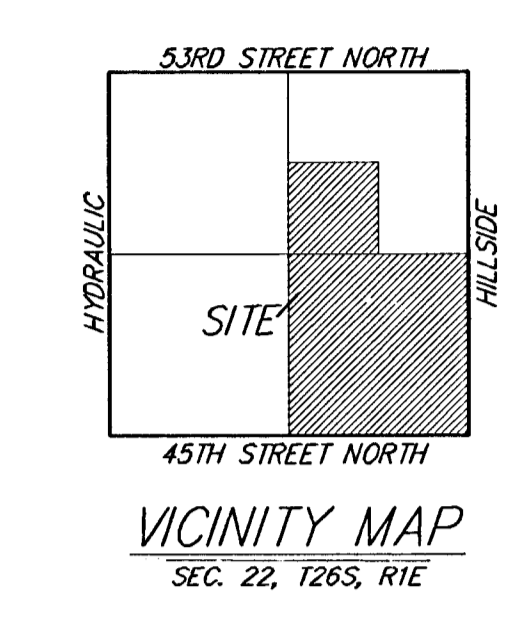
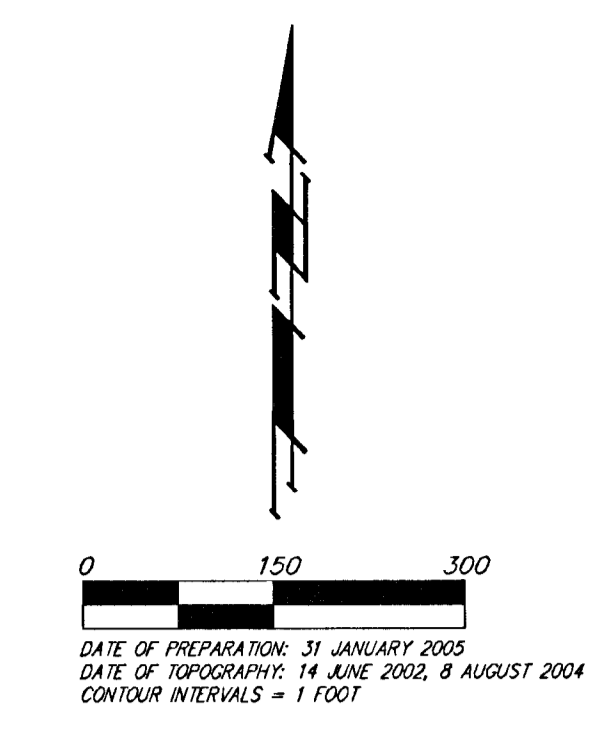


UTILITY PLAN
FALCON FALLS 3RD ADDITION
 WICHITA, SEDGWICK COUNTY, KANSAS



Northwest Gas Pipeline (see attached map) Pipeline Element
 12" Diameter 100' Spacing to West
 12" Diameter 100' Spacing to West
 12" Diameter 100' Spacing to West
 12" Diameter 100' Spacing to West

Phillis Pipe Line Co. Element
 12" Diameter 100' Spacing to West
 12" Diameter 100' Spacing to West
 12" Diameter 100' Spacing to West
 12" Diameter 100' Spacing to West



LEGEND

- Proposed Water Line (8" Unless Noted Otherwise)
- - - Existing Water Line (8" Unless Noted Otherwise)
- Proposed Sanitary Sewer Line (8" Unless Noted Otherwise)
- - - Existing Sanitary Sewer Line (8" Unless Noted Otherwise)
- Proposed Sanitary Sewer Manhole
- ⊕ Proposed Fire Hydrant
- Proposed Sanitary Sewer Flow

NOTE:
 ALL SANITARY SEWER INFORMATION ARE PER PLAN.