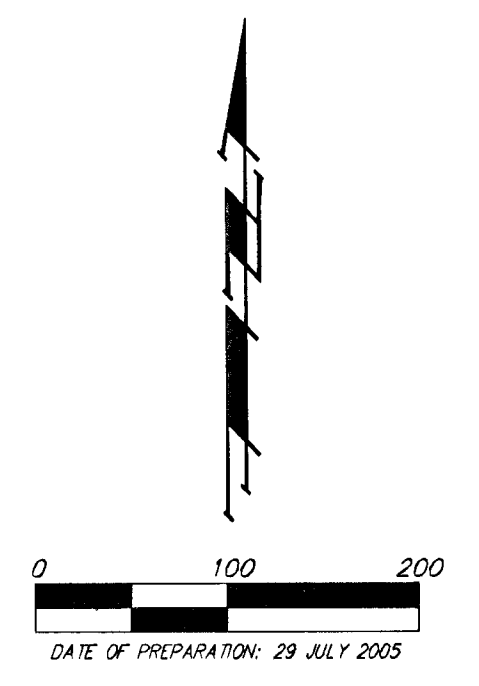


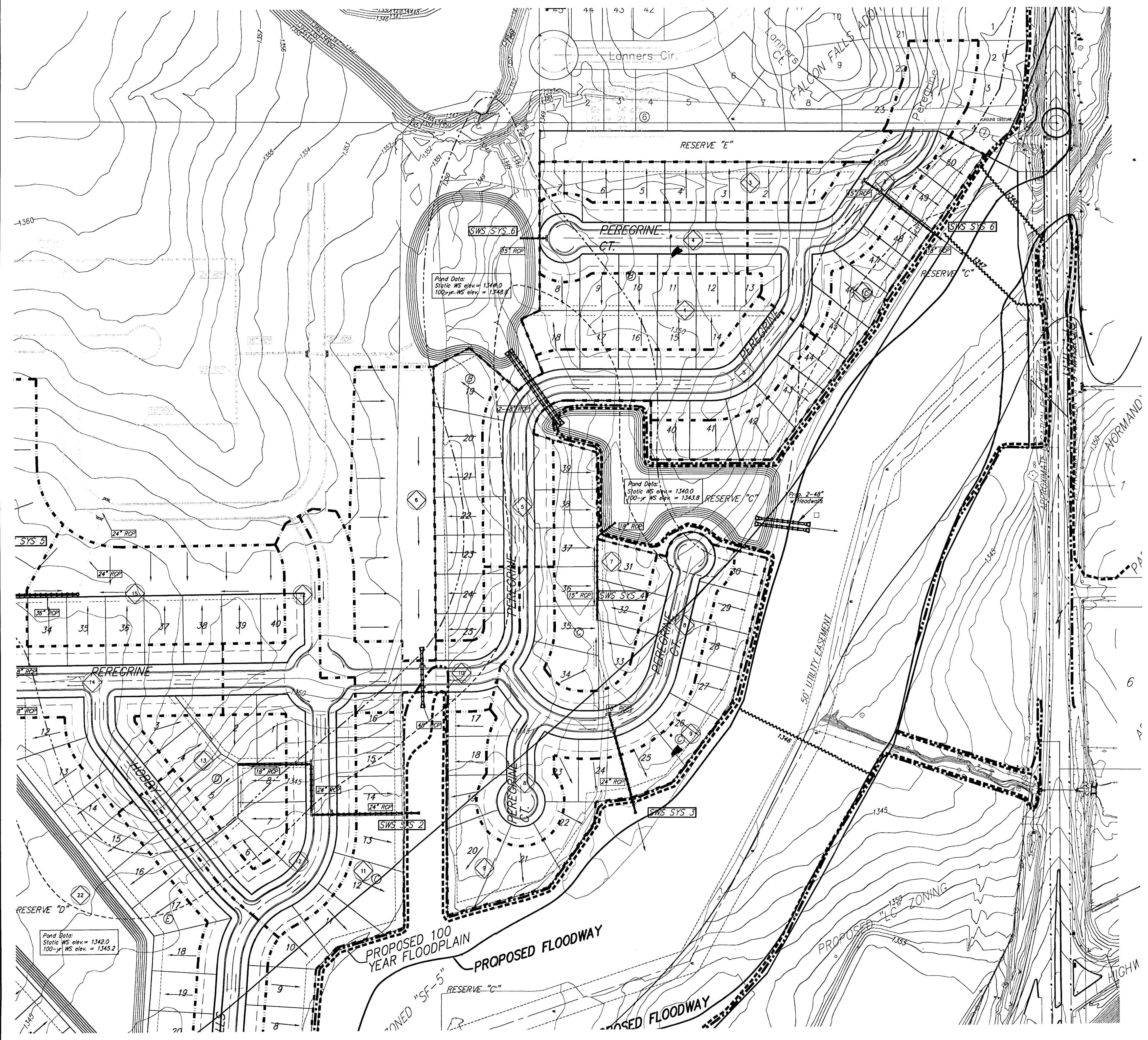
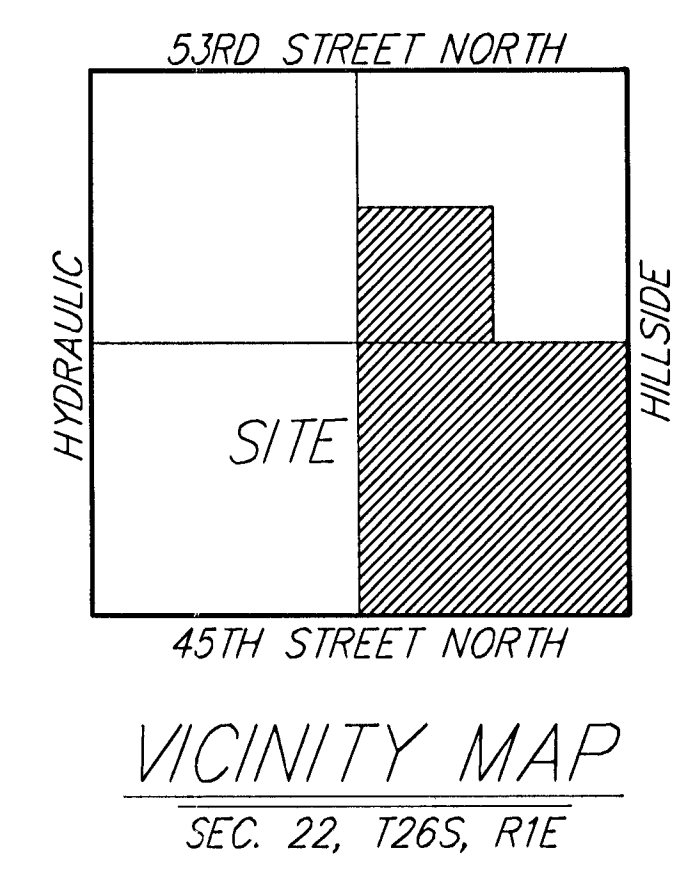
# DRAINAGE PLAN FALCON FALLS 3RD ADDITION WICHITA, SEDGWICK COUNTY, KANSAS



BENCHMARK:  
 \* CUT ON E. HUBBARD OF R.C.B.C.,  
 110' S. OF THE SE COR., SE 1/4, SEC. 22,  
 TWP. 26-S, R-1-E  
 ELEV. = 1359.54 NOV29

MINIMUM BUILDING PAD ELEVATIONS FOR LOWEST OPENING TO THE STRUCTURES NOV29

LOT	BLOCK	ELEVATION
1-7, 13,14	A	1347.0
1-27	C	1348.0
28-31, 37-50	C	1349.0
7,8, 18-25	B	1353.0
1-22	E	1347.0



Existing Intensity	2yr	5yr	100yr	Developed Intensity	2yr	5yr	100yr
Rational C	3.83	4.56	7.37	Rational C	3.83	4.56	7.37
	0.4	0.45	0.57		0.5	0.62	0.67

Basin ID	Area acres	Existing Flowrates			Developed Flowrates		
		2-yr cfs	5-yr cfs	100-yr cfs	2-yr cfs	5-yr cfs	100-yr cfs
1	1.9	2.9	3.9	8.0	3.8	5.4	9.4
2	2.3	3.5	4.7	9.7	4.4	6.5	11
3	1.1	1.7	2.3	4.6	2.1	3.1	5.4
4	1.5	2.3	3.1	6.3	2.9	4.2	7.4
5	2.8	4.3	5.7	12	5.4	7.9	14
6	3.7	5.7	7.6	16	7.1	10	18
7	1.6	2.5	3.3	8.7	3.1	4.5	7.9
8	3	5.1	6.8	14	6.3	9.3	16
9	2.6	4.0	5.3	11	5.0	7.4	13
10	1.7	2.6	3.5	7.1	3.3	4.8	8.4
11	3.2	4.9	6.6	13	6.1	9.0	16
12	3.2	4.9	6.6	13	6.1	9.0	16
13	1.4	2.1	2.9	8	2.7	4.0	7
14	4.3	6.6	8.8	18	8.2	12	21
15	2.4	3.7	4.9	10	4.6	6.8	12
16	2.6	4.0	5.3	11	5.0	7.4	13
17	2.1	3.2	4.3	8.8	4.0	5.9	10
18	1.3	2.0	2.7	5.5	2.5	3.7	6.4
19	1.5	2.3	3.1	6.3	2.9	4.2	7.4
20	3.2	4.9	6.6	13	6.1	9.0	16
21	6.5	10	13	27	12	18	32
22	7.3	11	15	31	14	21	36
23	0.7	1.1	1.4	2.9	1.3	2.0	3.5
24	2.2	3.4	4.5	9.2	4.2	6.2	11
25	0.8	1.2	1.6	3.4	1.5	2.3	4.0
26	0.7	1.1	1.4	2.9	1.3	2.0	3.5
27	0.4	0.6	0.8	1.7	0.8	1.1	2.0
28	1.0	1.5	2.1	4.2	1.9	2.8	4.9
29	0.9	1.4	1.8	3.8	1.7	2.5	4.4

NOTE:  
 NO BUILDING PERMITS ARE TO BE ISSUED FOR LOTS 5-9, 13, 14, BLOCK A, R. 9, 16-25, BLOCK B, 17, 31, 35-39, 43-49, BLOCK C, 6-8, BLOCK D, 2-11, 16-18, BLOCK E, WITHIN FALCON FALLS 3RD ADDITION UNLESS THE LOWEST FLOOR CAN BE CONSTRUCTED AT OR ABOVE THE BASE FLOOD ELEVATION OR UNLESS THE CITY OF WICHITA, KANSAS HAS RECEIVED A LETTER OF MAP REVISION FROM THE FEDERAL EMERGENCY MANAGEMENT AGENCY.

NOTE:  
 NO BUILDING PERMITS ARE TO BE ISSUED FOR LOTS 1-4, 10-12, BLOCK A, 1-13, 18-30, 32-34, BLOCK C, 1, 19-22, BLOCK E, WITHIN FALCON FALLS 3RD ADDITION UNLESS THE CITY OF WICHITA, KANSAS HAS RECEIVED A LETTER OF MAP REVISION FROM THE FEDERAL EMERGENCY MANAGEMENT AGENCY.

NOTE: Existing Floodway and Floodplain Boundaries are scaled per FEMA FIRM 200321 0150 A, June 3, 1986. A Conditional Letter of Map Revision has been approved by FEMA Case #04-07-A181R.

NOTE: SWS System #5 and north-east pond system proposed in Falcon Falls 2nd Addition.