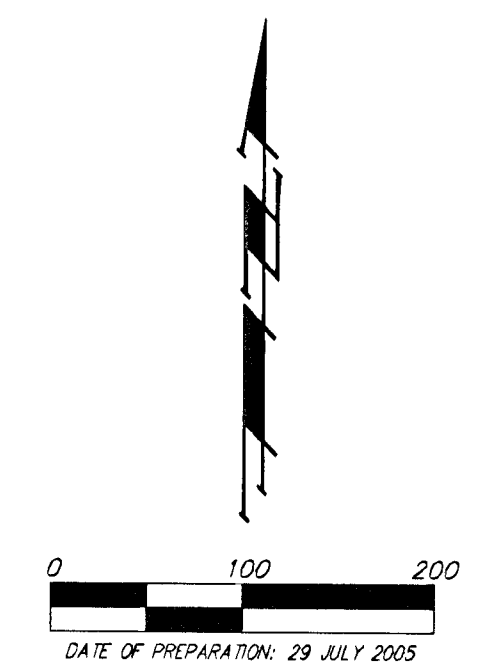
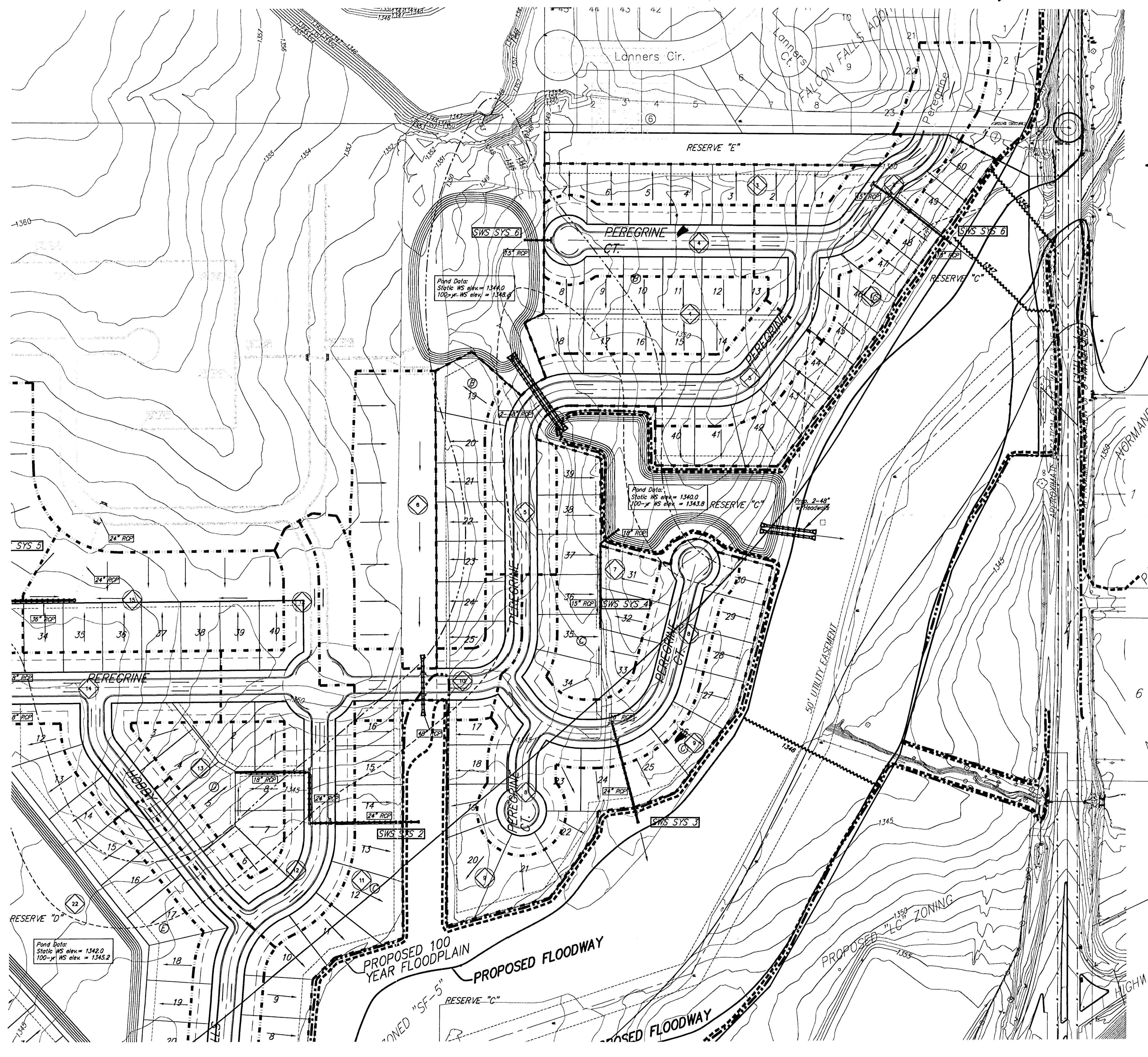
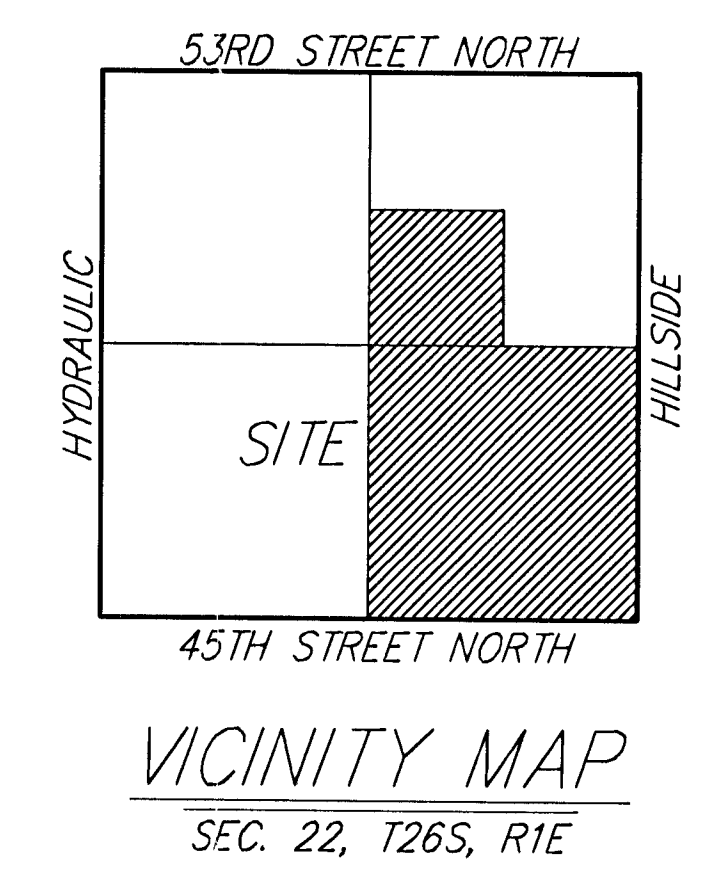


DRAINAGE PLAN FALCON FALLS 3RD ADDITION WICHITA, SEDGWICK COUNTY, KANSAS



BENCHMARK:
 * CUT ON E. HUBGUARD OF R.C.R.C.
 110' S. OF THE SE COR., SE1/4, SEC. 22,
 TWP. 26-S., R-1-E.
 ELEV. = 1359.54 NGVD29



MINIMUM BUILDING PAD ELEVATIONS FOR LOWEST OPENING TO THE STRUCTURES		
LOT	BLOCK	ELEVATION NGVD29
1-7, 13, 14	A	1347.0
1-27	C	1348.0
28-31, 37-50	C	1349.0
7, 8, 18-25	B	1353.0
1-22	E	1347.0

Existing Intensity Rational C	2yr			5yr			100yr			
	Intensity	2yr	5yr	Intensity	2yr	5yr	Intensity	2yr	5yr	100yr
	3.83	4.56	7.37	3.83	4.56	7.37				
	0.4	0.45	0.57	0.5	0.62	0.67				

Basin ID	Area acres	Existing Flowrates			Developed Flowrates		
		2-yr cfs	5-yr cfs	100-yr cfs	2-yr cfs	5-yr cfs	100-yr cfs
1	1.9	2.9	3.9	8.0	3.6	5.4	9.4
2	2.3	3.5	4.7	9.7	4.4	6.5	11
3	1.1	1.7	2.3	4.6	2.1	3.1	5.4
4	1.5	2.3	3.1	6.3	2.9	4.2	7.4
5	2.8	4.3	5.7	12	5.4	7.9	14
6	3.7	5.7	7.6	16	7.1	10	18
7	1.6	2.5	3.3	6.7	3.1	4.5	7.9
8	3	5.1	6.8	14	6.3	9.3	16
9	2.6	4.0	5.3	11	5.0	7.4	13
10	1.7	2.6	3.5	7.1	3.3	4.8	8.4
11	3.2	4.9	6.6	13	6.1	9.0	16
12	3.2	4.9	6.6	13	6.1	9.0	16
13	1.4	2.1	2.9	6	2.7	4.0	7
14	4.3	6.6	8.8	18	8.2	12	21
15	2.4	3.7	4.9	10	4.6	6.8	12
16	2.6	4.0	5.3	11	5.0	7.4	13
17	2.1	3.2	4.3	8.8	4.0	5.9	10
18	1.3	2.0	2.7	5.5	2.5	3.7	6.4
19	1.5	2.3	3.1	6.3	2.9	4.2	7.4
20	3.2	4.9	6.6	13	6.1	9.0	16
21	6.5	10	13	27	12	18	32
22	7.3	11	15	31	14	21	36
23	0.7	1.1	1.4	2.9	1.3	2.0	3.5
24	2.2	3.4	4.5	9.2	4.2	6.2	11
25	0.8	1.2	1.6	3.4	1.5	2.3	4.0
26	0.7	1.1	1.4	2.9	1.3	2.0	3.5
27	0.4	0.6	0.8	1.7	0.8	1.1	2.0
28	1.0	1.5	2.1	4.2	1.9	2.8	4.9
29	0.9	1.4	1.8	3.8	1.7	2.5	4.4

NOTE:
 NO BUILDING PERMITS ARE TO BE ISSUED FOR LOTS 8-9, 13, 14, BLOCK A, 8, 9, 16-25, BLOCK B, 17, 21, 35-39, 43-49, BLOCK C, 6-9, BLOCK D, 2-11, 16-18, BLOCK E, WITHIN FALCON FALLS 3RD ADDITION UNLESS THE LOWEST FLOOR CAN BE CONSTRUCTED AT OR ABOVE THE BASE FLOOD ELEVATION OR UNLESS THE CITY OF WICHITA, KANSAS HAS RECEIVED A LETTER OF MAP REVISION FROM THE FEDERAL EMERGENCY MANAGEMENT AGENCY.

NOTE:
 NO BUILDING PERMITS ARE TO BE ISSUED FOR LOTS 1-4, 10-12, BLOCK A, 1-13, 18-20, 32-34, BLOCK C, 1, 19-22, BLOCK E, WITHIN FALCON FALLS 3RD ADDITION UNLESS THE CITY OF WICHITA, KANSAS HAS RECEIVED A LETTER OF MAP REVISION FROM THE FEDERAL EMERGENCY MANAGEMENT AGENCY.

NOTE: Existing Floodway and Floodplain Boundaries are scaled per FEMA FIRM 200321 0150 A, June 3, 1986. A Conditional Letter of Map Revision has been approved by FEMA Case #04-07-A181R.

NOTE: SWS System #5 and north-east pond system proposed in Falcon Falls 2nd Addition.