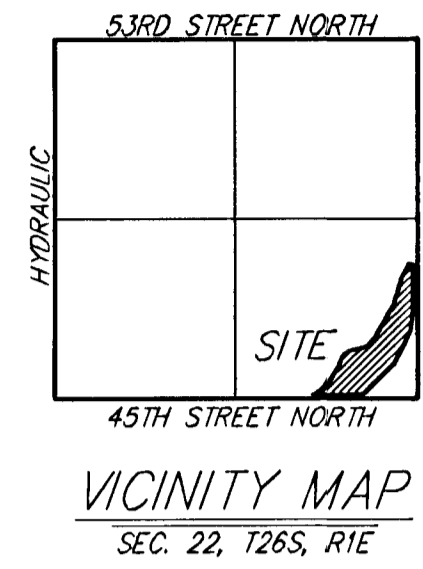


DRAINAGE PLAN

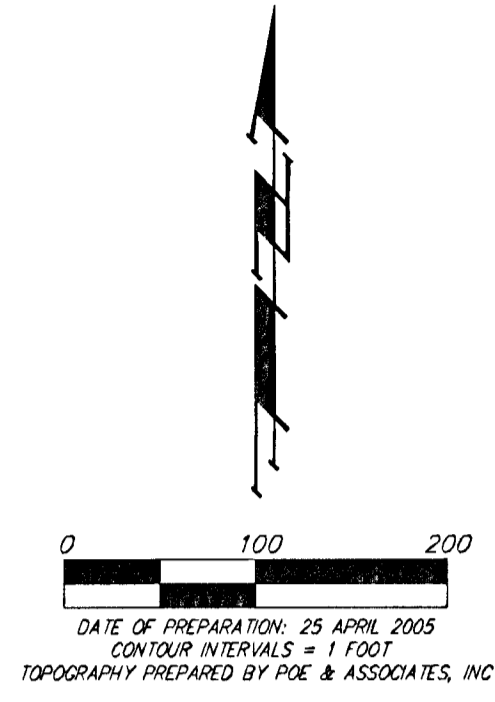
FALCON FALLS COMMERCIAL ADDITION

WICHITA, SEDGWICK COUNTY, KANSAS



LOT	BLOCK	ELEVATION
1	A	1348.0
2	A	1348.0

Existing	Developed
DA = 20.2 acres	
"C" = 0.50	"C" = 0.75
Q ₂ = 39 cfs	Q ₂ = 58 cfs
Q ₅ = 46 cfs	Q ₅ = 69 cfs
Q ₁₀ = 53 cfs	Q ₁₀ = 79 cfs
Q ₁₀₀ = 74 cfs	Q ₁₀₀ = 112 cfs

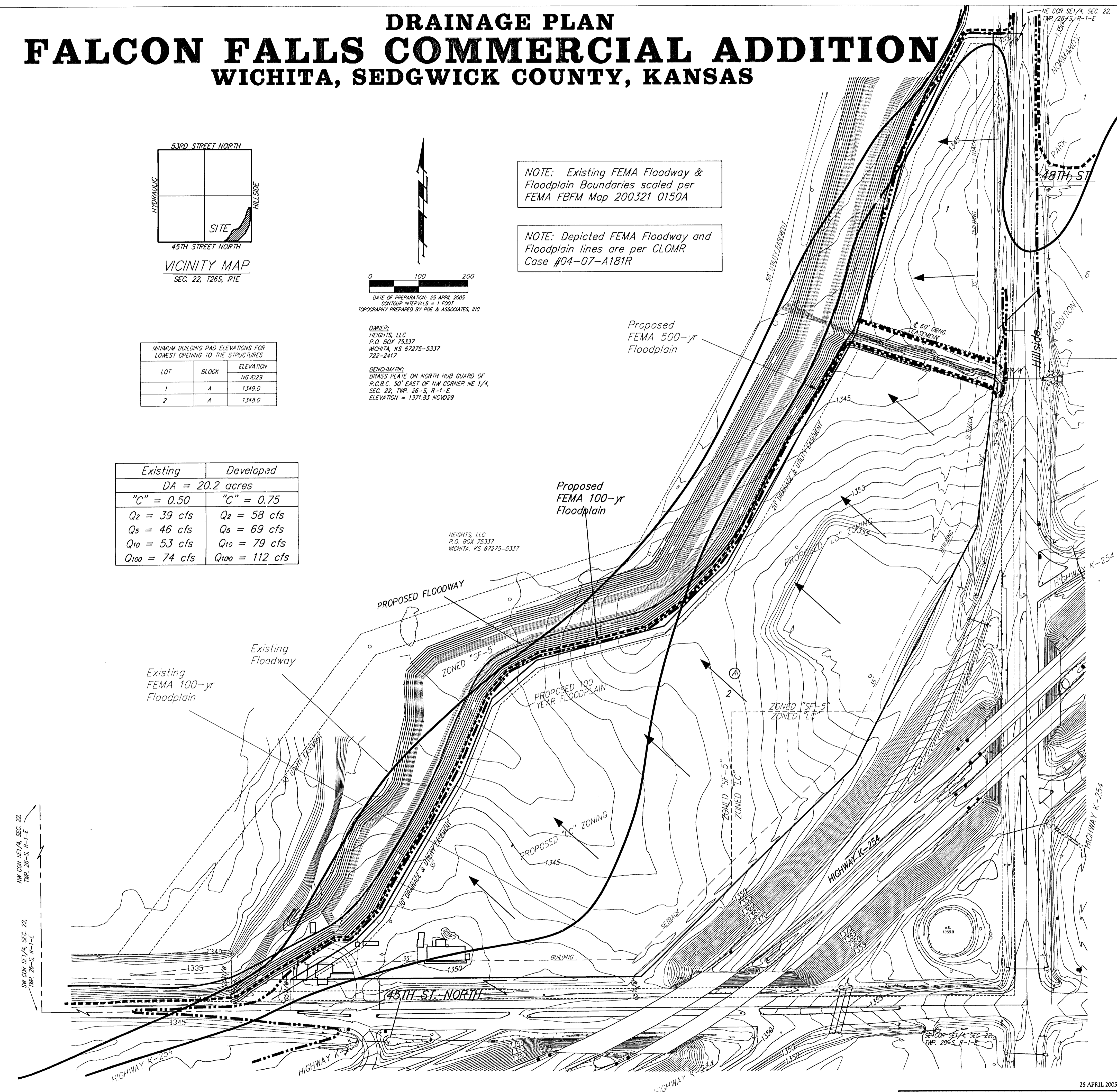


OWNER:
HEIGHTS, LLC
P.O. BOX 75337
WICHITA, KS 67275-5337
722-2417

BENCHMARK:
BRASS PLATE ON NORTH HUB GUARD OF
R.C.B.C. 50' EAST OF NW CORNER NE 1/4,
SEC. 22, TWP. 26-S, R-1-E.
ELEVATION = 1371.83 NGVD29

NOTE: Existing FEMA Floodway & Floodplain Boundaries scaled per FEMA FBFM Map 200321 0150A

NOTE: Depicted FEMA Floodway and Floodplain lines are per CLOMR Case #04-07-A181R



25 APRIL 2005