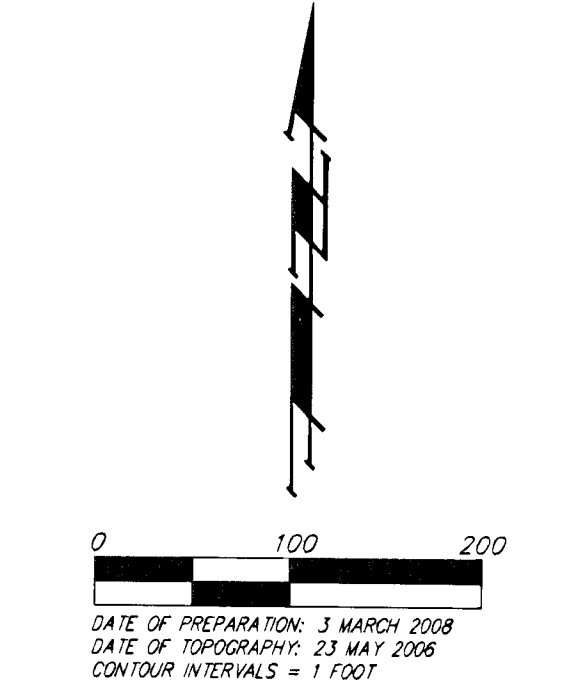
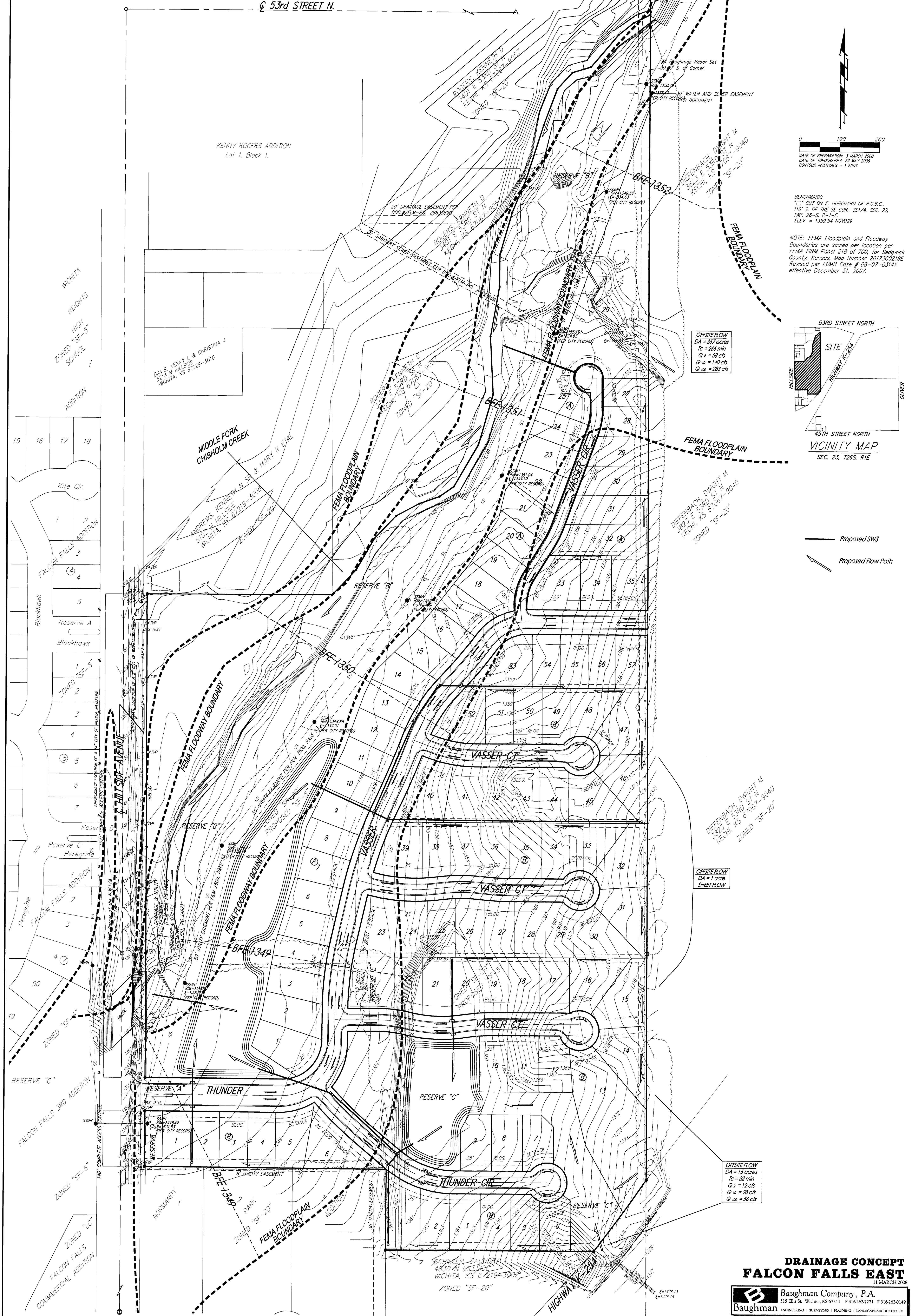


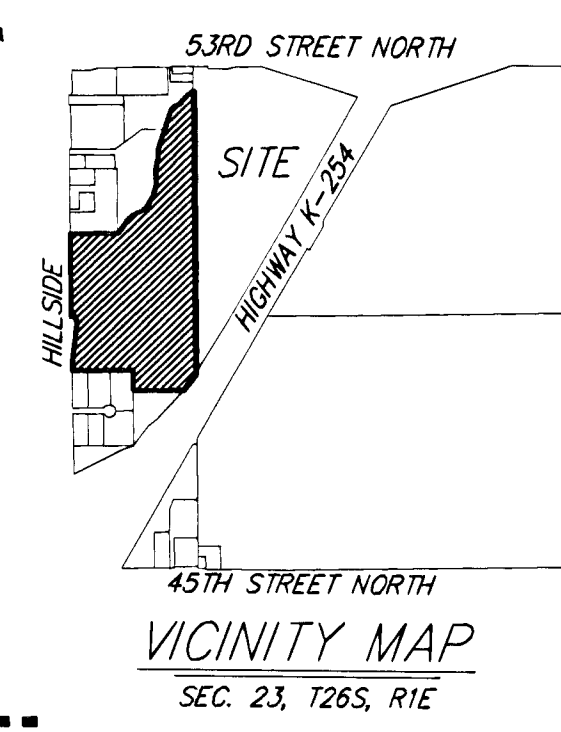
# DRAINAGE CONCEPT FALCON FALLS EAST WICHITA, SEDGWICK COUNTY, KANSAS

@ 53rd STREET N.



**BENCHMARK:**  
T.C. CUT ON E. HUBBARD OF P.C.B.C.,  
170 S. OF THE SE COR. SE 1/4 SEC. 22,  
TWP. 26-S, R-1-E,  
ELEV. = 1308.54 NAVD83

**NOTE:** FEMA Floodplain and Floodway  
Boundaries are scaled per location per  
FEMA FIRP Panel 218 of 700, for Sedgwick  
County, Kansas, Map Number 201730218E  
Revised per LOMR Case # 08-07-0314X  
effective December 31, 2007.



**OFFSITE FLOW**  
DA = 20 acres  
I<sub>0</sub> = 246 mm  
Q<sub>1</sub> = 58 cfs  
Q<sub>2</sub> = 140 cfs  
Q<sub>3</sub> = 282 cfs

**OFFSITE FLOW**  
DA = 1 acre  
SHEET FLOW

**OFFSITE FLOW**  
DA = 15 acres  
I<sub>0</sub> = 32 mm  
Q<sub>1</sub> = 12 cfs  
Q<sub>2</sub> = 28 cfs  
Q<sub>3</sub> = 55 cfs

Proposed SWS  
Proposed Flow Path