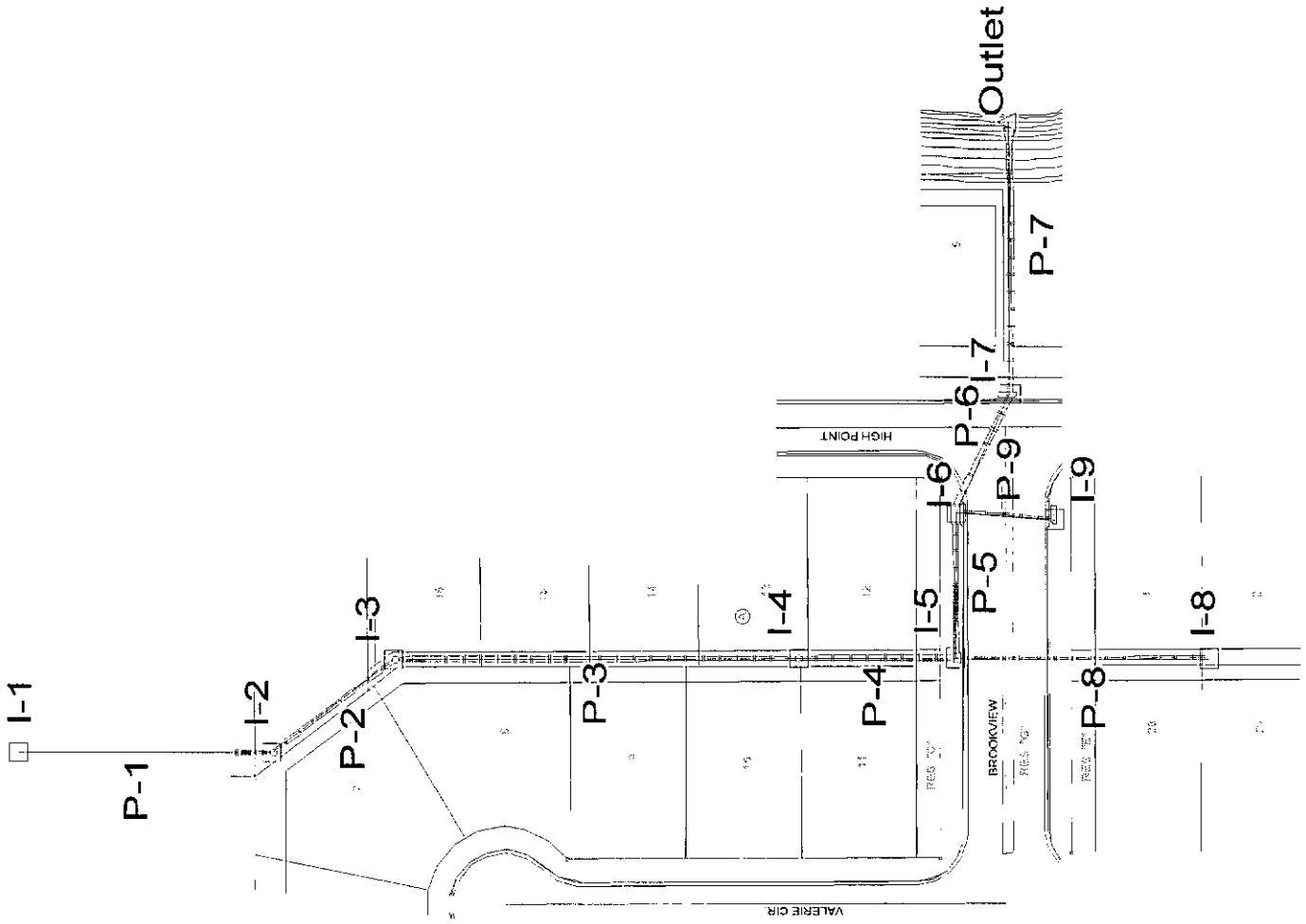
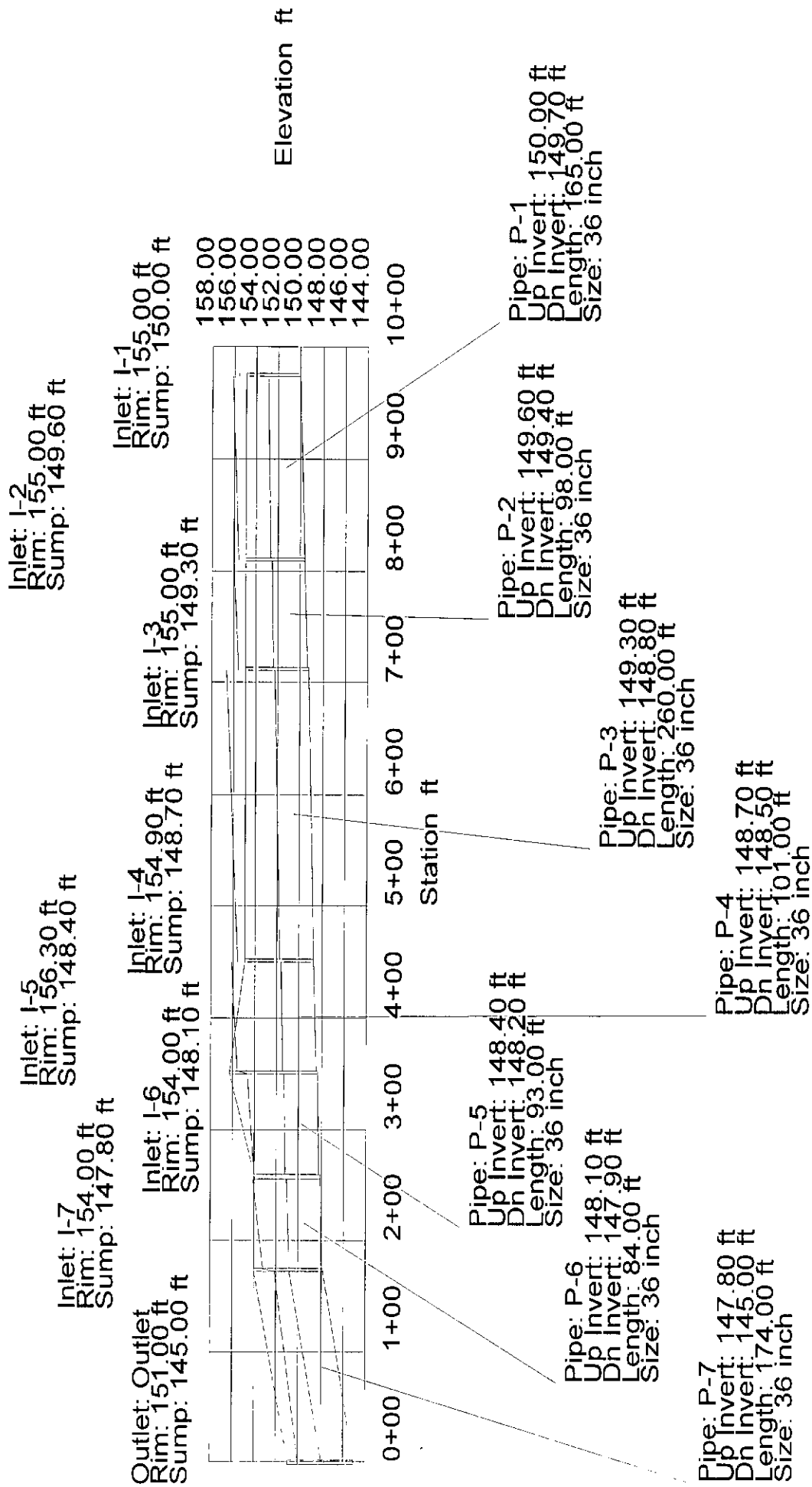
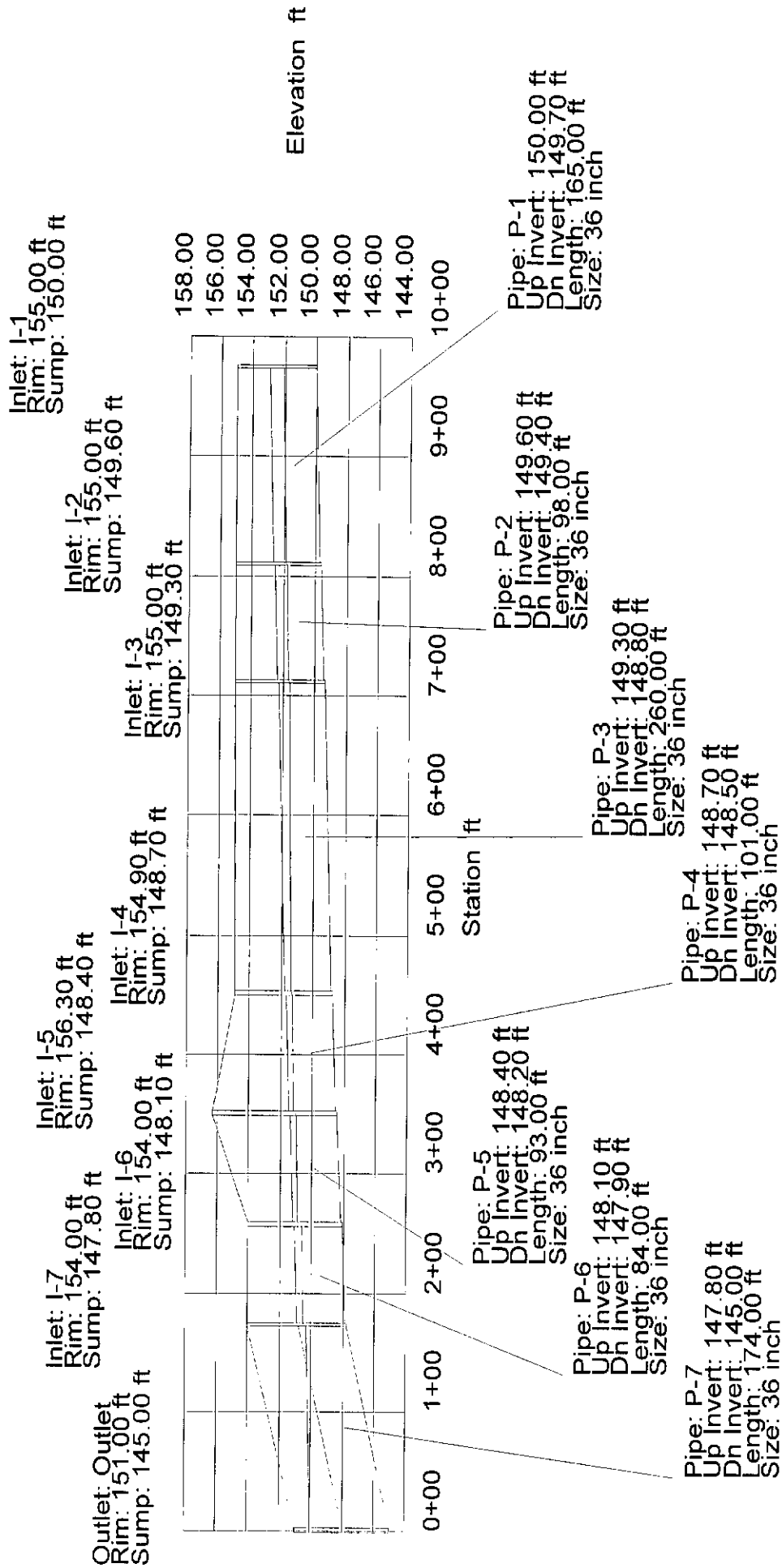


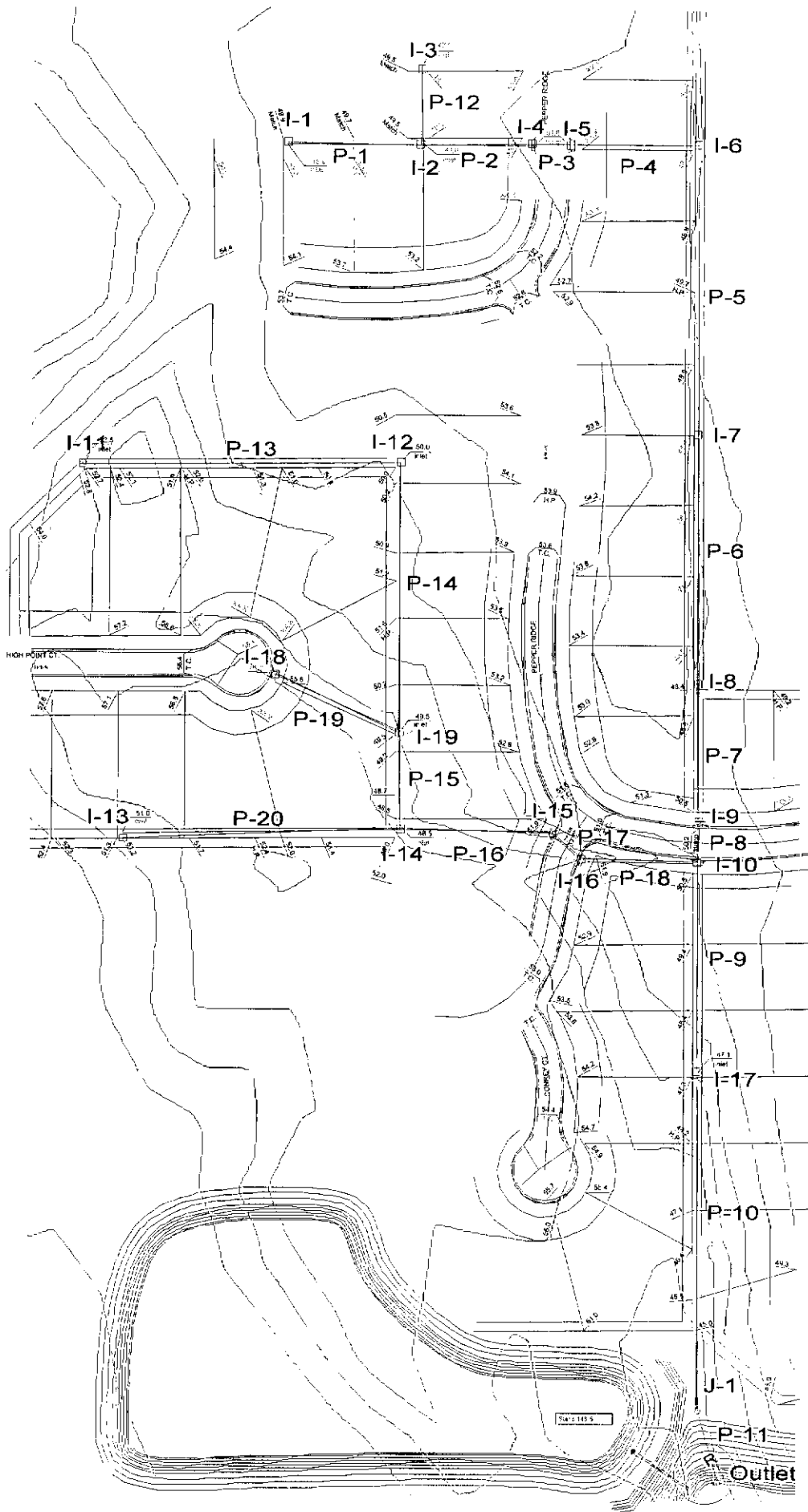
<b>Existing</b>	<b>2yr</b>	<b>5yr</b>	<b>100yr</b>	<b>Developed</b>	<b>2yr</b>	<b>5yr</b>	<b>100yr</b>
<b>Intensity</b>	3.83	4.56	7.37	<b>Intensity</b>	3.83	4.56	7.37
<b>Rational C</b>	0.4	0.45	0.57	<b>Rational C</b>	0.52	0.54	0.74

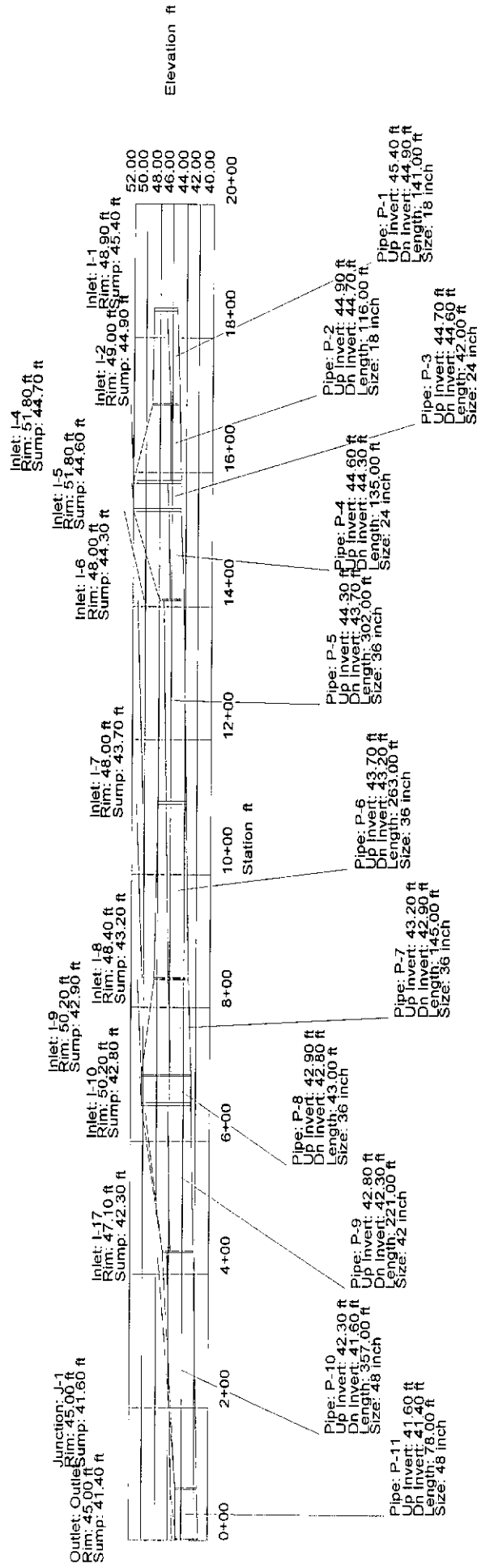
<b>Basin ID</b>	<b>Area acres</b>	<b>Existing Flowrates</b>			<b>Developed Flowrates</b>		
		<b>2-yr cfs</b>	<b>5-yr cfs</b>	<b>100-yr cfs</b>	<b>2-yr cfs</b>	<b>5-yr cfs</b>	<b>100-yr cfs</b>
1	0.77	1.2	1.6	3.2	1.5	1.9	4.2
2	0.65	1.0	1.3	2.7	1.3	1.6	3.5
3	0.62	0.9	1.3	2.6	1.2	1.5	3.4
4	0.64	1.0	1.3	2.7	1.3	1.6	3.5
5	0.72	1.1	1.5	3.0	1.4	1.8	3.9
6	0.45	0.7	0.9	1.9	0.9	1.1	2.5
7	2.60	4.0	5.3	11	5.2	6.4	14
8	0.90	1.4	1.8	3.8	1.8	2.2	4.9
9	3.40	5.2	7.0	14	6.8	8.4	19
10	2.10	3.2	4.3	8.8	4.2	5.2	11
11	3.70	5.7	7.6	16	7.4	9.1	20
12	1.60	2.5	3.3	6.7	3.2	3.9	8.7
13	1.62	2.5	3.3	6.8	3.2	4.0	8.8
14	1.10	1.7	2.3	4.6	2.2	2.7	6.0
15	2.30	3.5	4.7	9.7	4.6	5.7	13
16	1.40	2.1	2.9	5.9	2.8	3.4	7.6
17	0.98	1.5	2.0	4.1	2.0	2.4	5.3
18	1.50	2.3	3.1	6.3	3.0	3.7	8.2
19	4.40	6.7	9.0	18	8.8	10.8	24
20	5.00	7.7	10	21	10.0	12.3	27
21	1.70	2.6	3.5	7.1	3.4	4.2	9.3
22	1.20	1.8	2.5	5.0	2.4	3.0	6.5
23	1.40	2.1	2.9	5.9	2.8	3.4	7.6
24	1.70	2.6	3.5	7.1	3.4	4.2	9.3
25	1.80	2.8	3.7	7.6	3.6	4.4	9.8
26	2.00	3.1	4.1	8.4	4.0	4.9	11
27	0.31	0.5	0.6	1.3	0.6	0.8	1.7
28	0.40	0.6	0.8	1.7	0.8	1.0	2.2
29	0.38	0.6	0.8	1.6	0.8	0.9	2.1
30	0.00	0.0	0.0	0.0	0.0	0.0	0.0
31	0.29	0.4	0.6	1.2	0.6	0.7	1.6
32	0.80	1.2	1.6	3.4	1.6	2.0	4.4
33	0.71	1.1	1.5	3.0	1.4	1.7	3.9
34	0.24	0.4	0.5	1.0	0.5	0.6	1.3
35	0.45	0.7	0.9	1.9	0.9	1.1	2.5

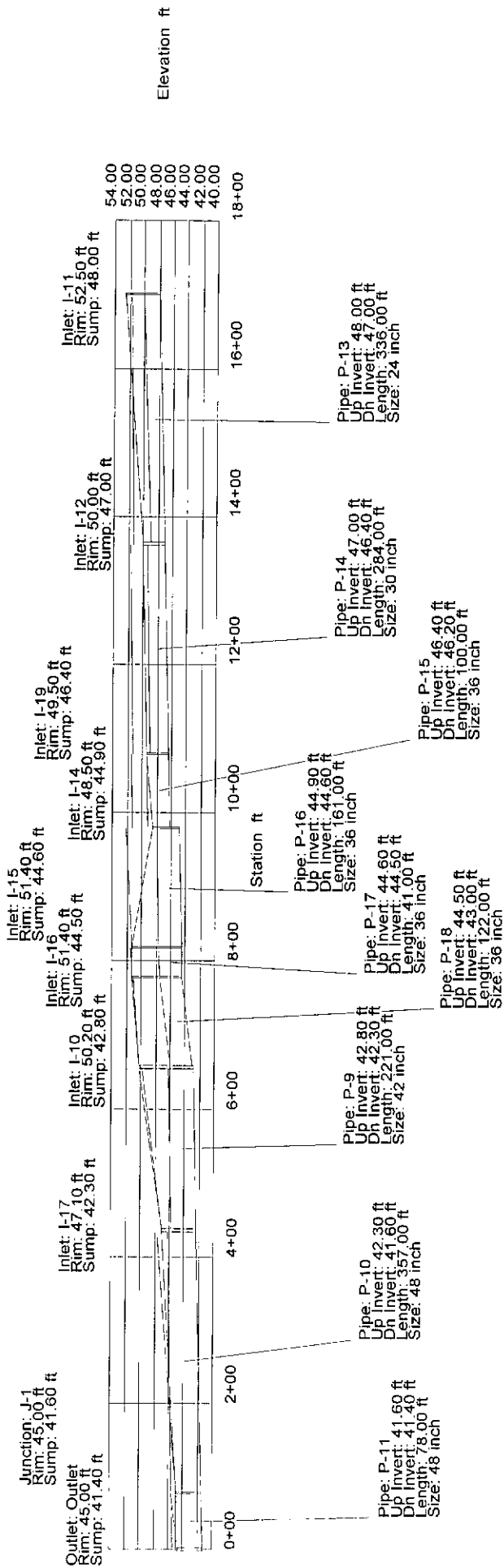


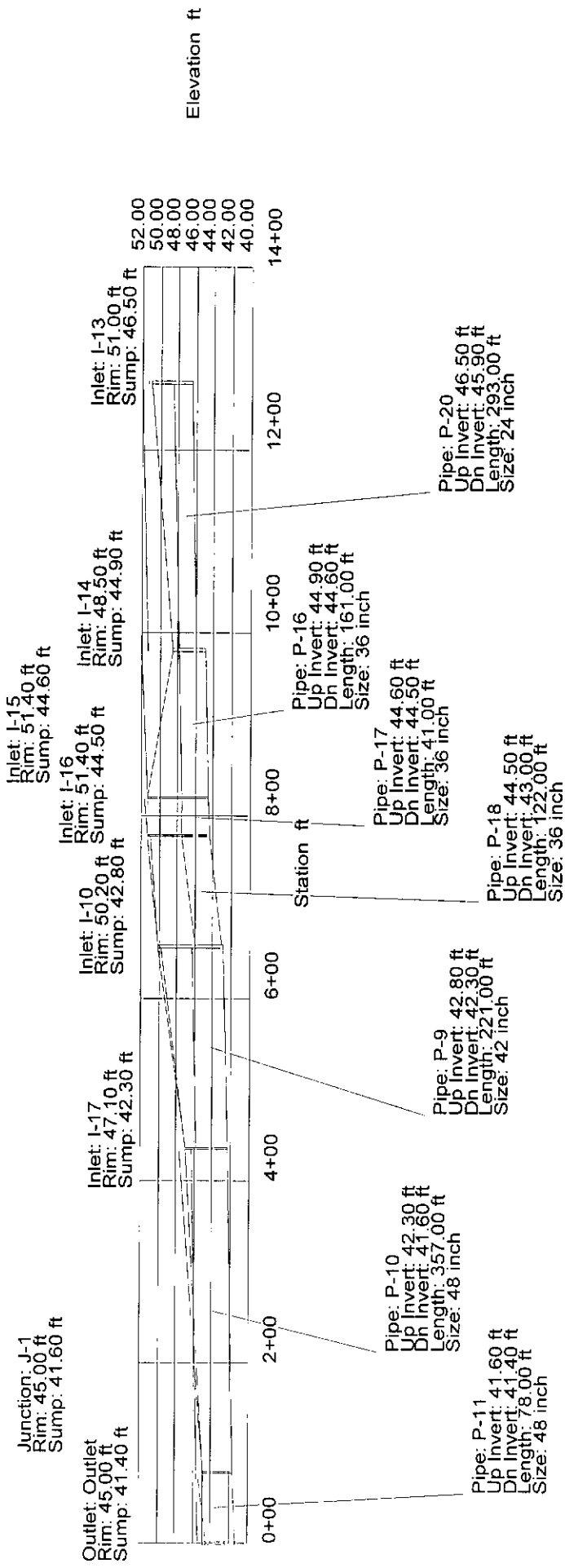


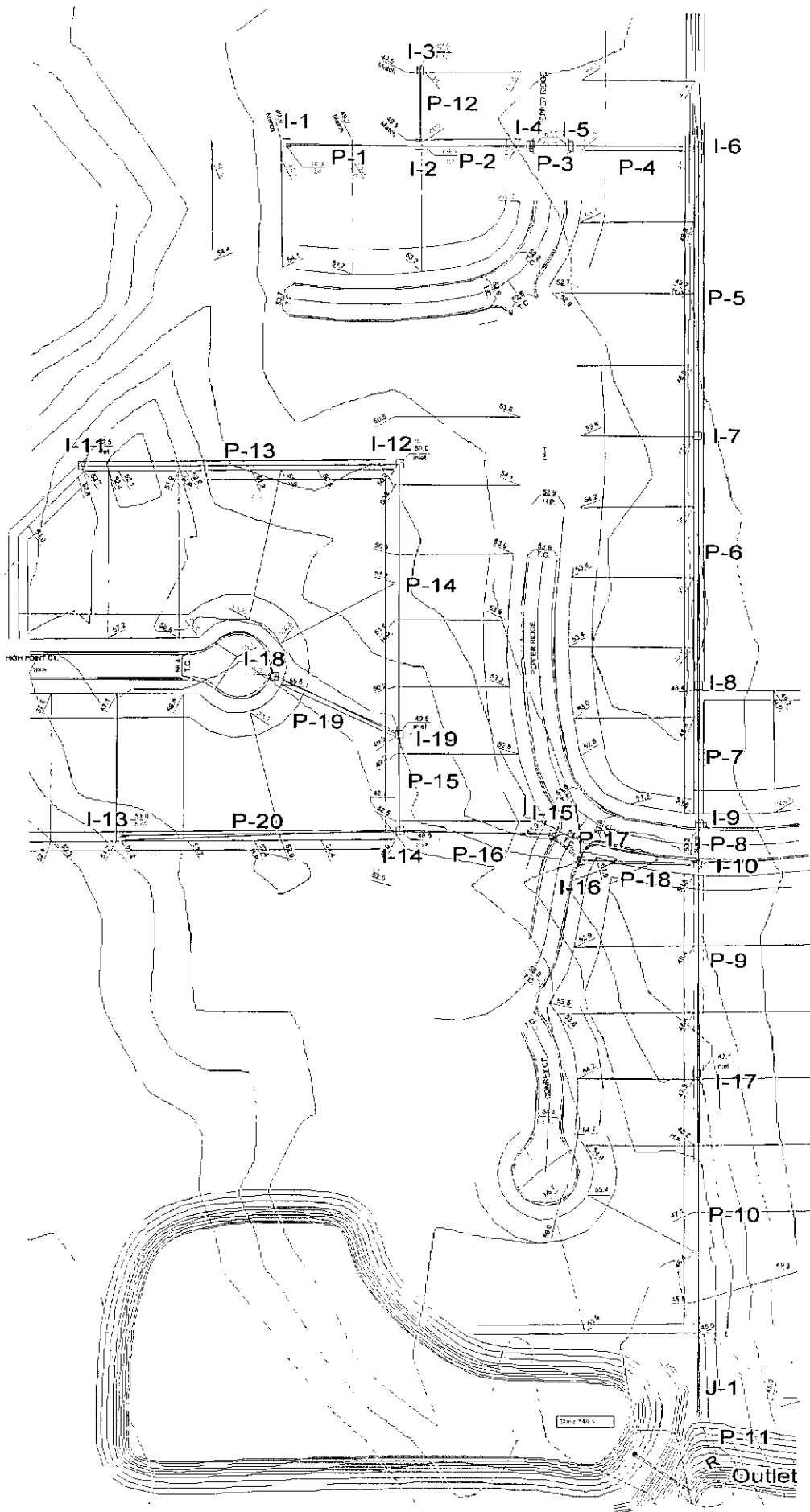


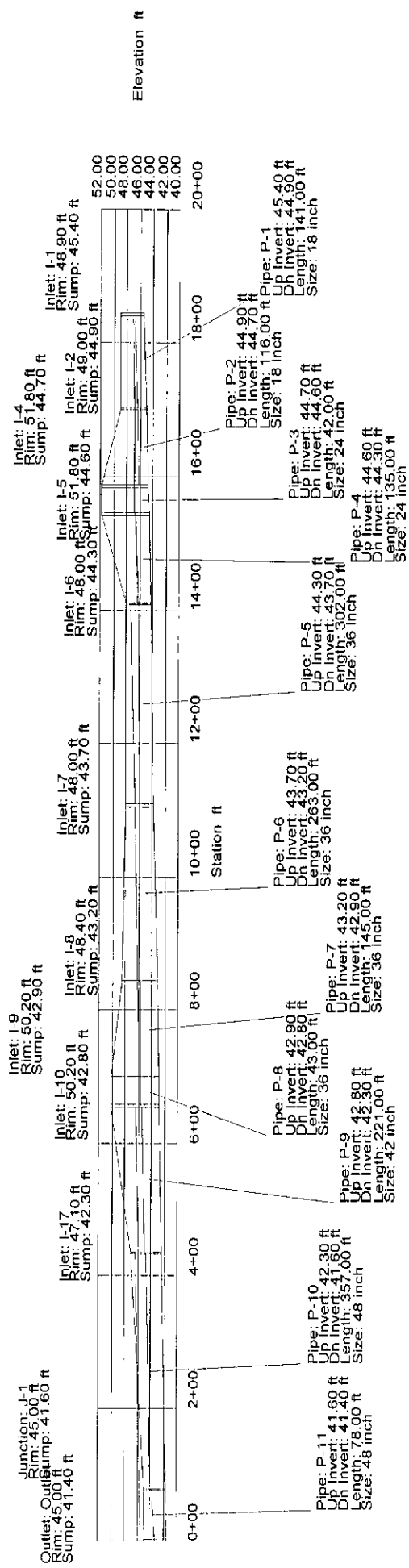


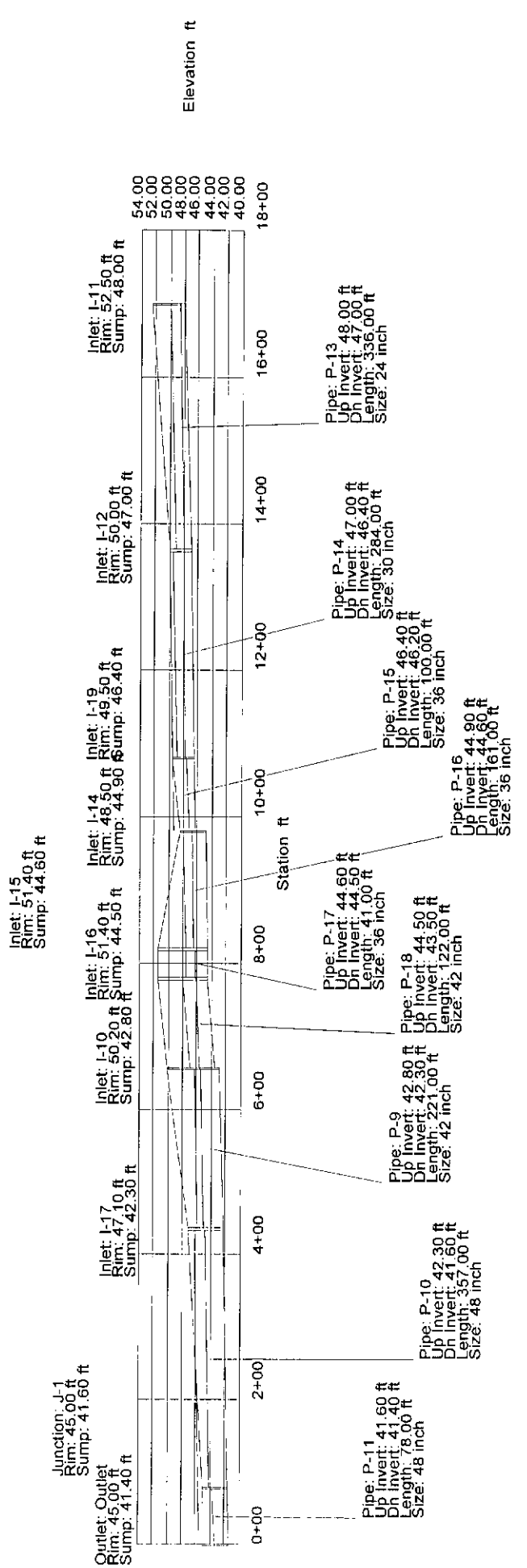


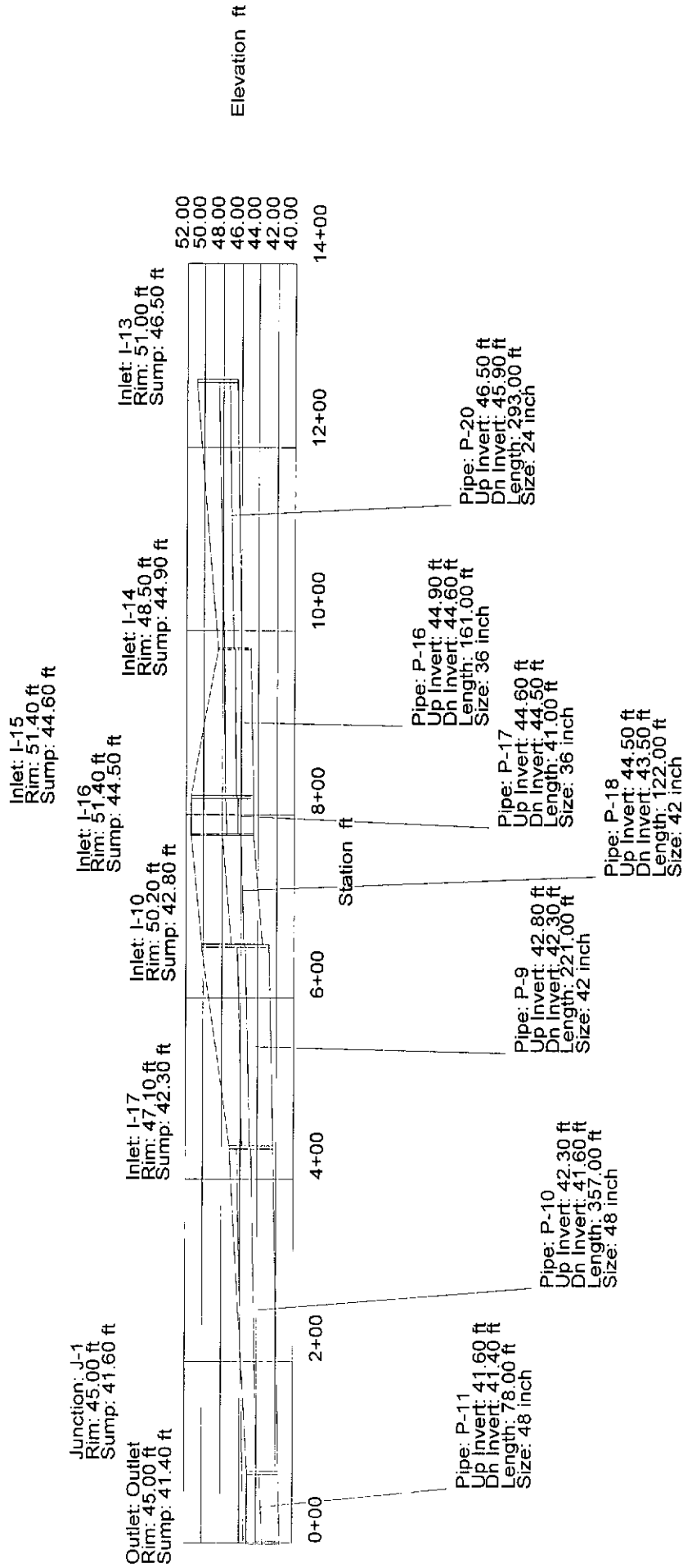












Elevation ft

14+00

12+00

10+00

8+00

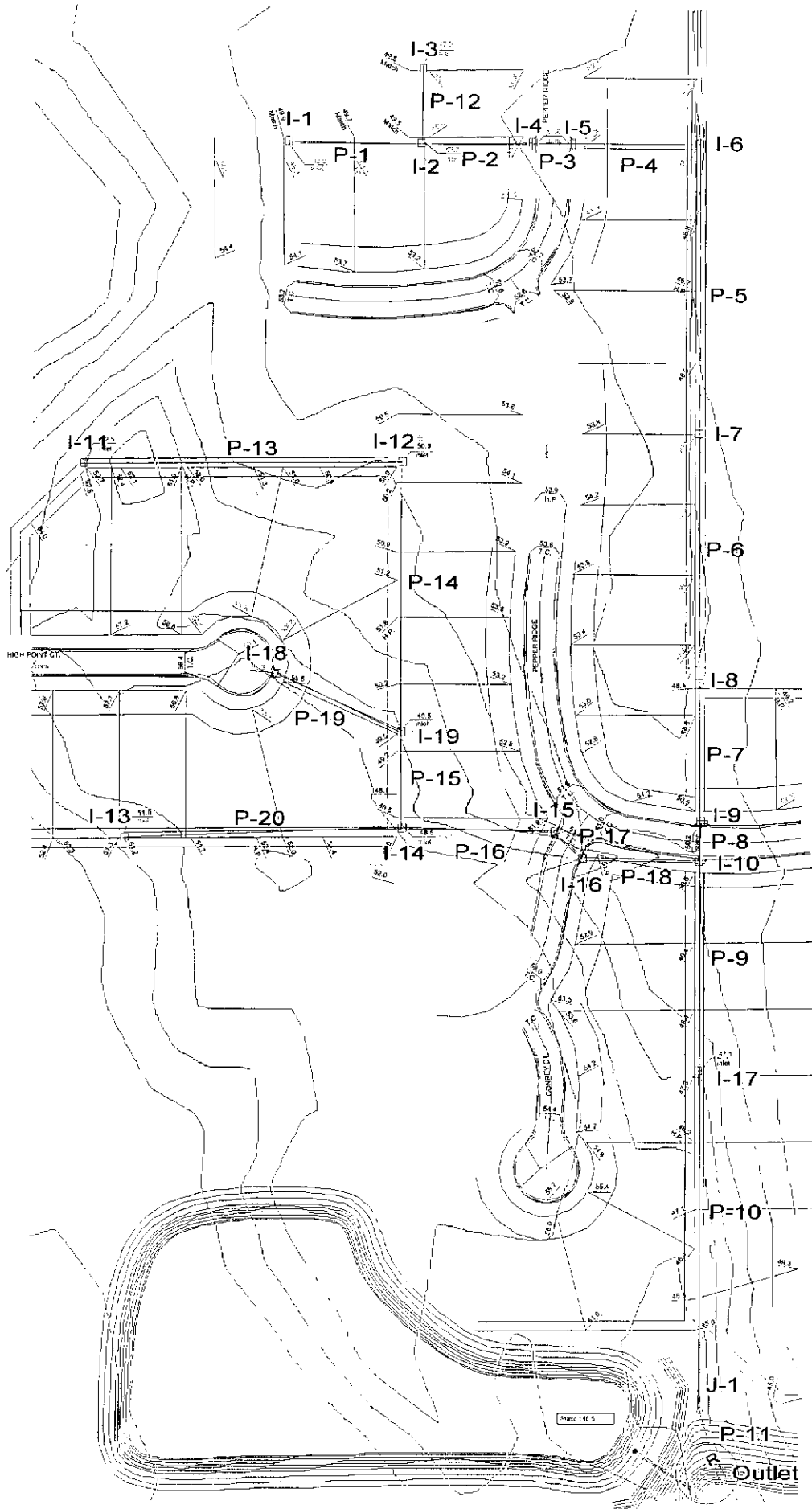
6+00

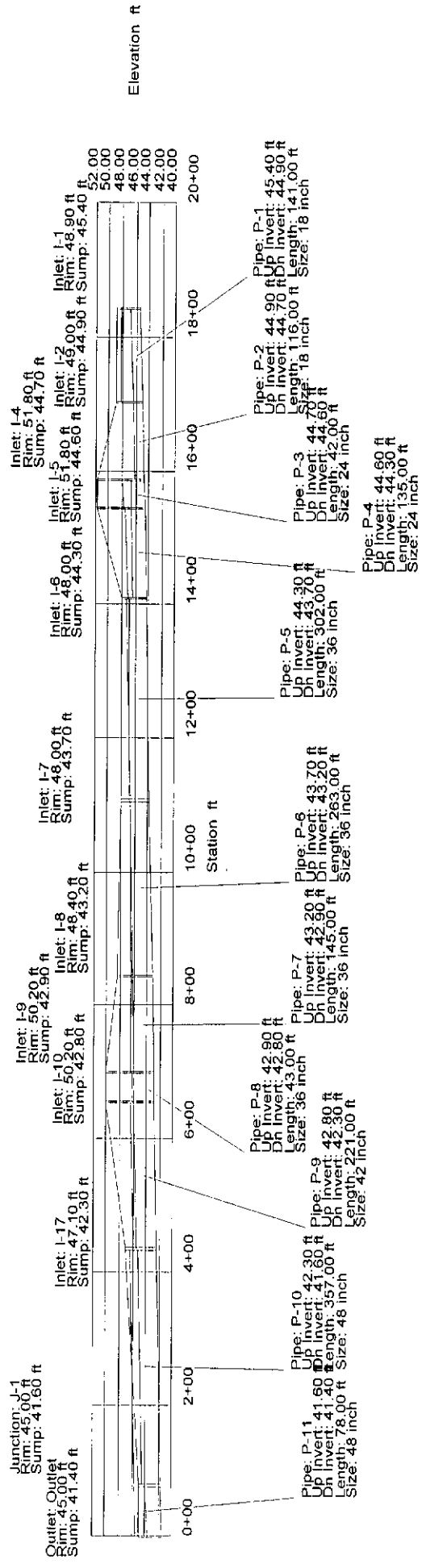
4+00

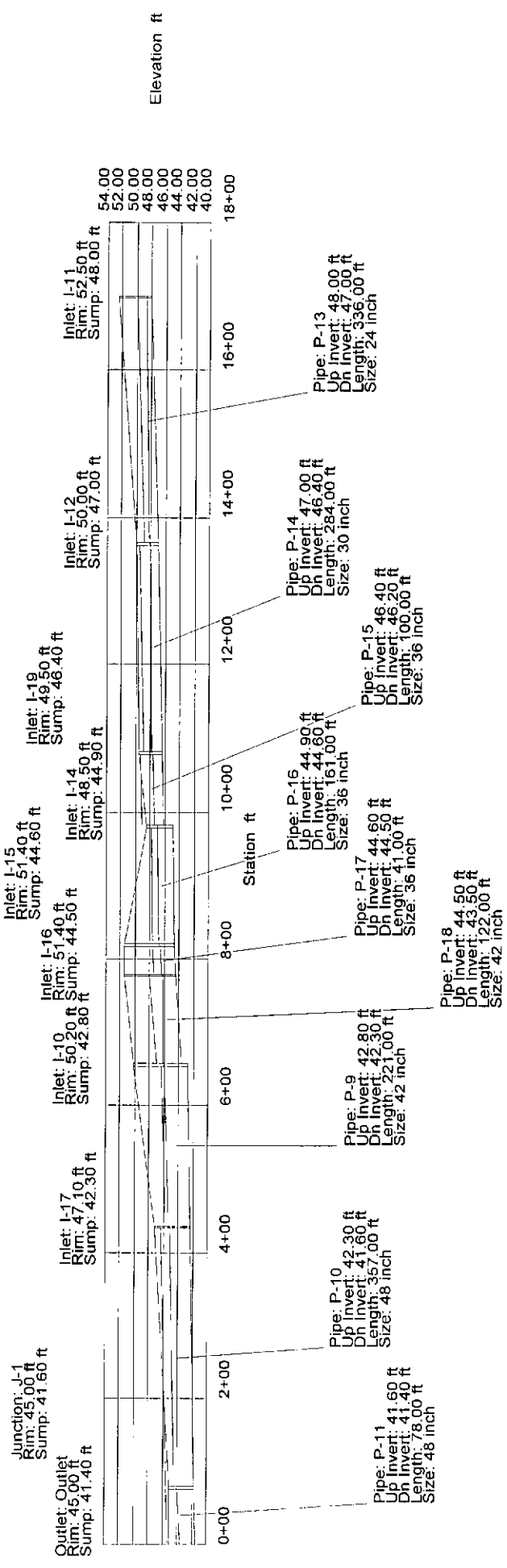
2+00

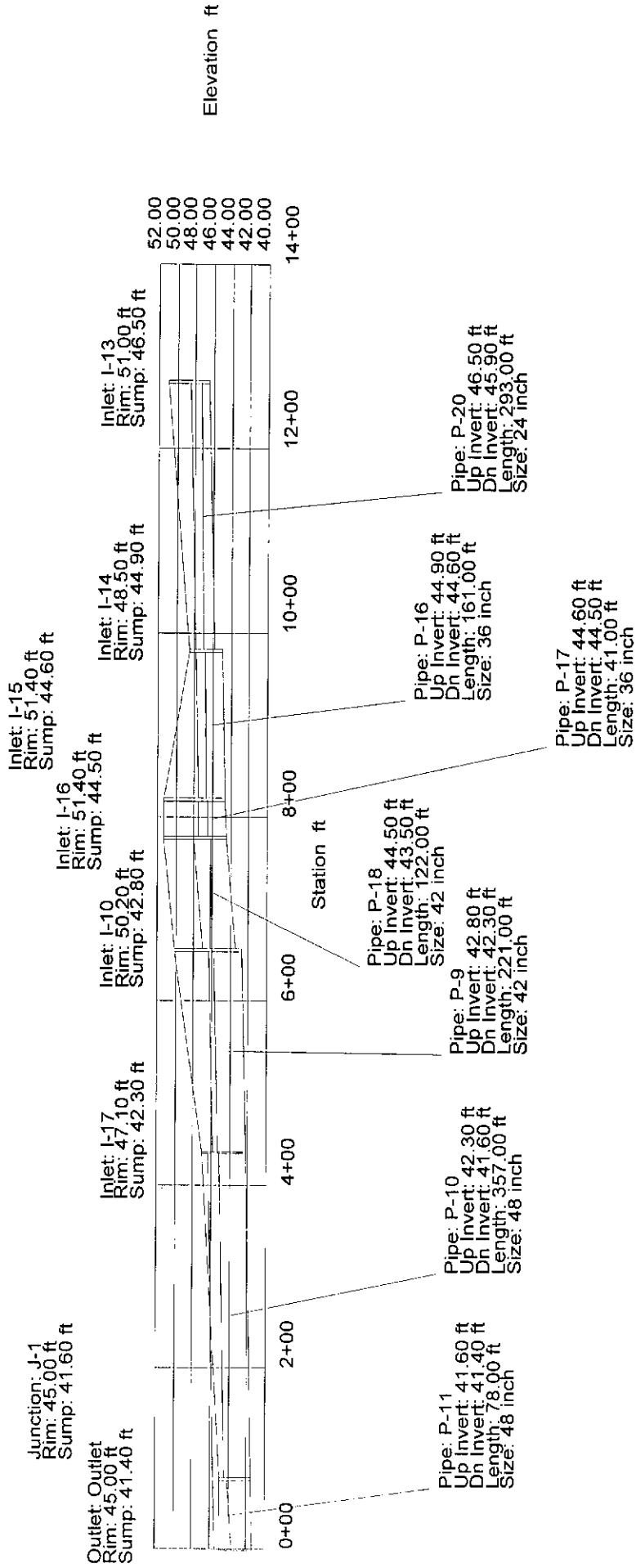
0+00

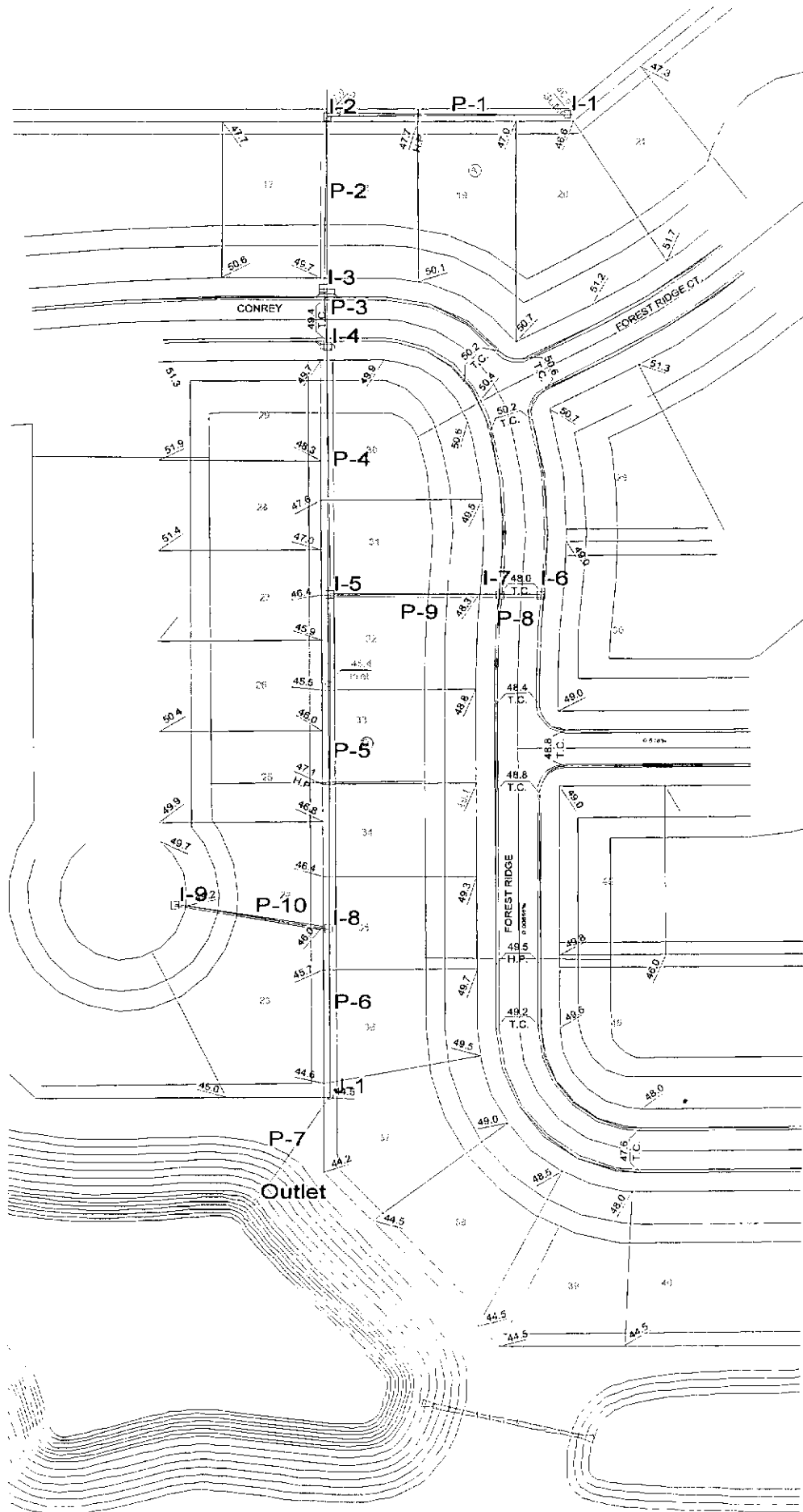
Station ft

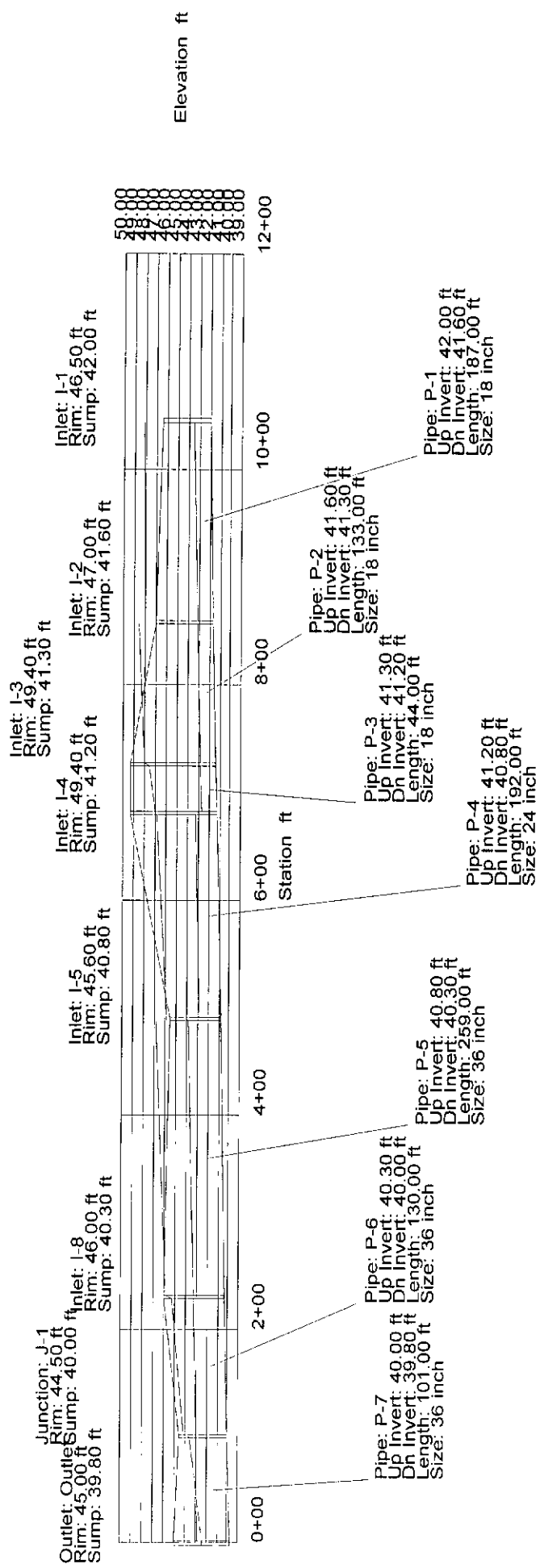


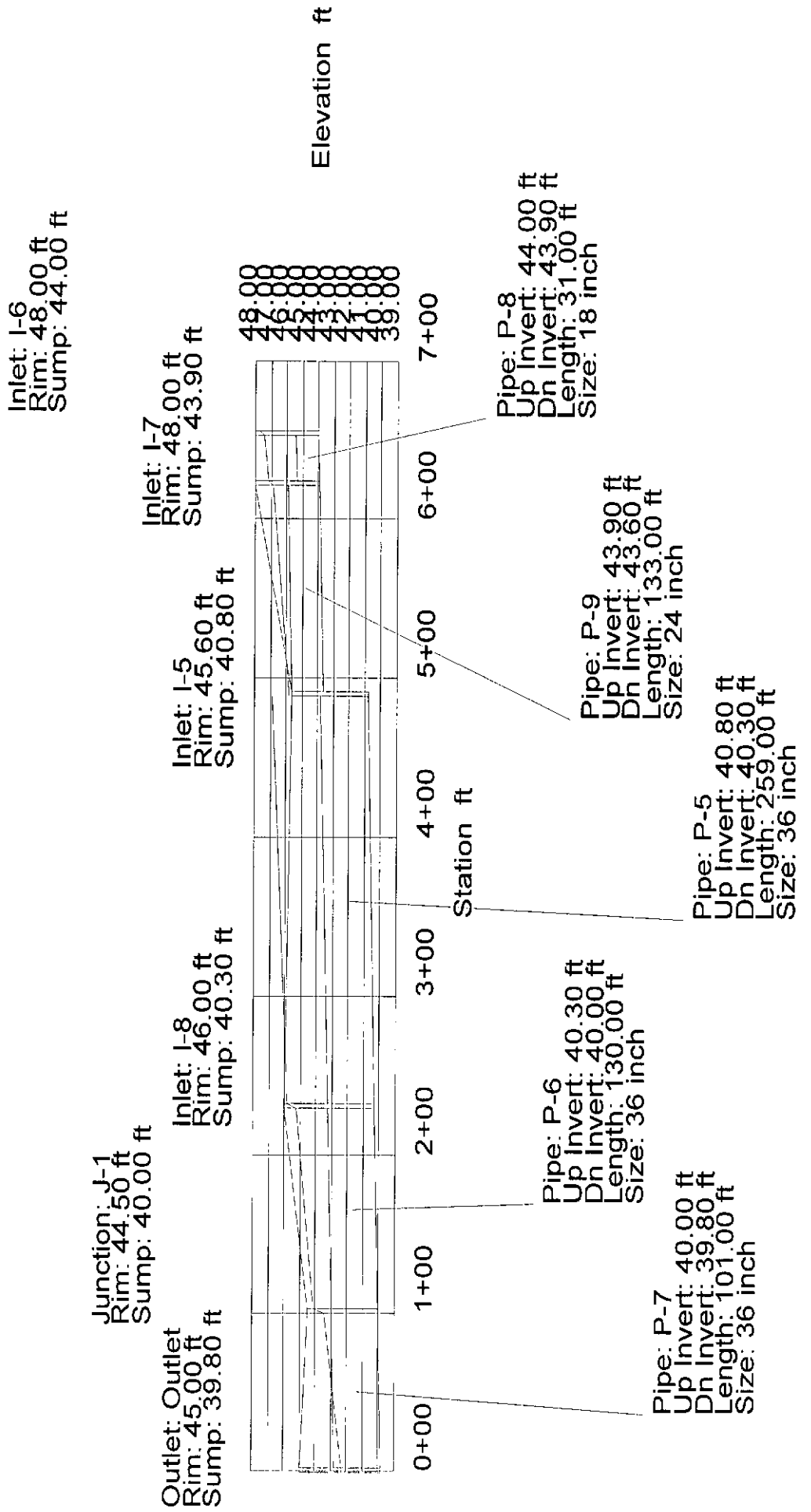










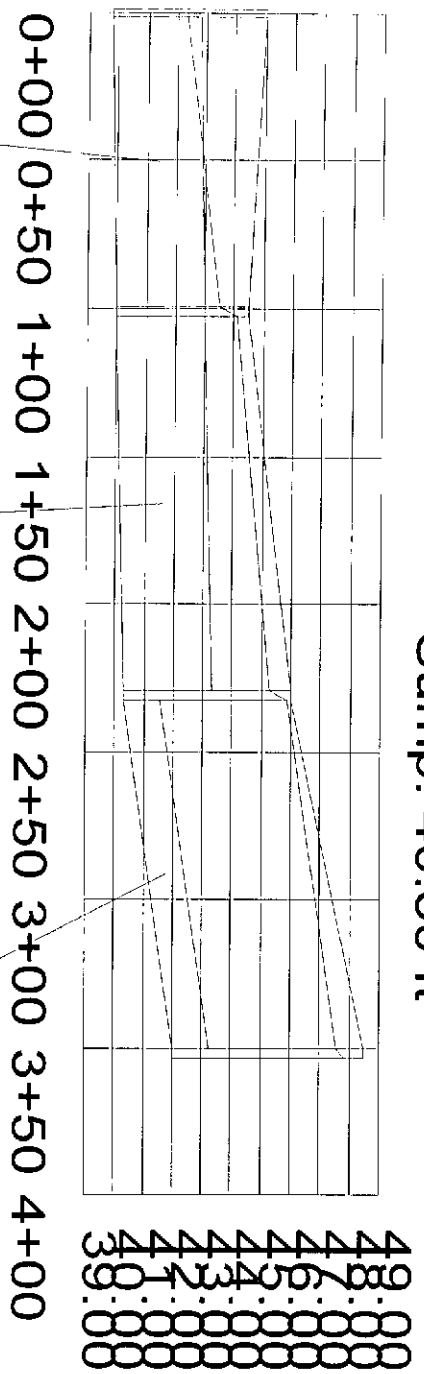


Outlet: Outlet  
 Rim: 45.00 ft  
 Sump: 39.80 ft

Junction: J-1  
 Rim: 44.50 ft  
 Sump: 40.00 ft

Inlet: I-8  
 Rim: 46.00 ft  
 Sump: 40.30 ft

Inlet: I-9  
 Rim: 48.50 ft  
 Sump: 42.00 ft



Elevation ft

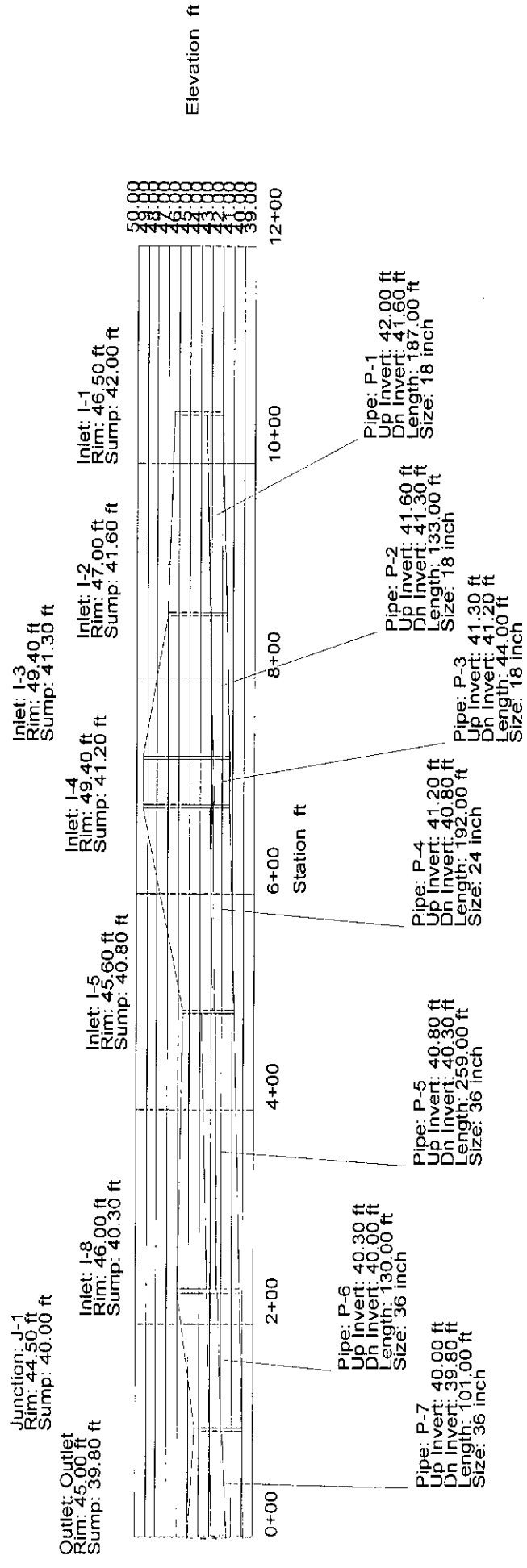
Station ft

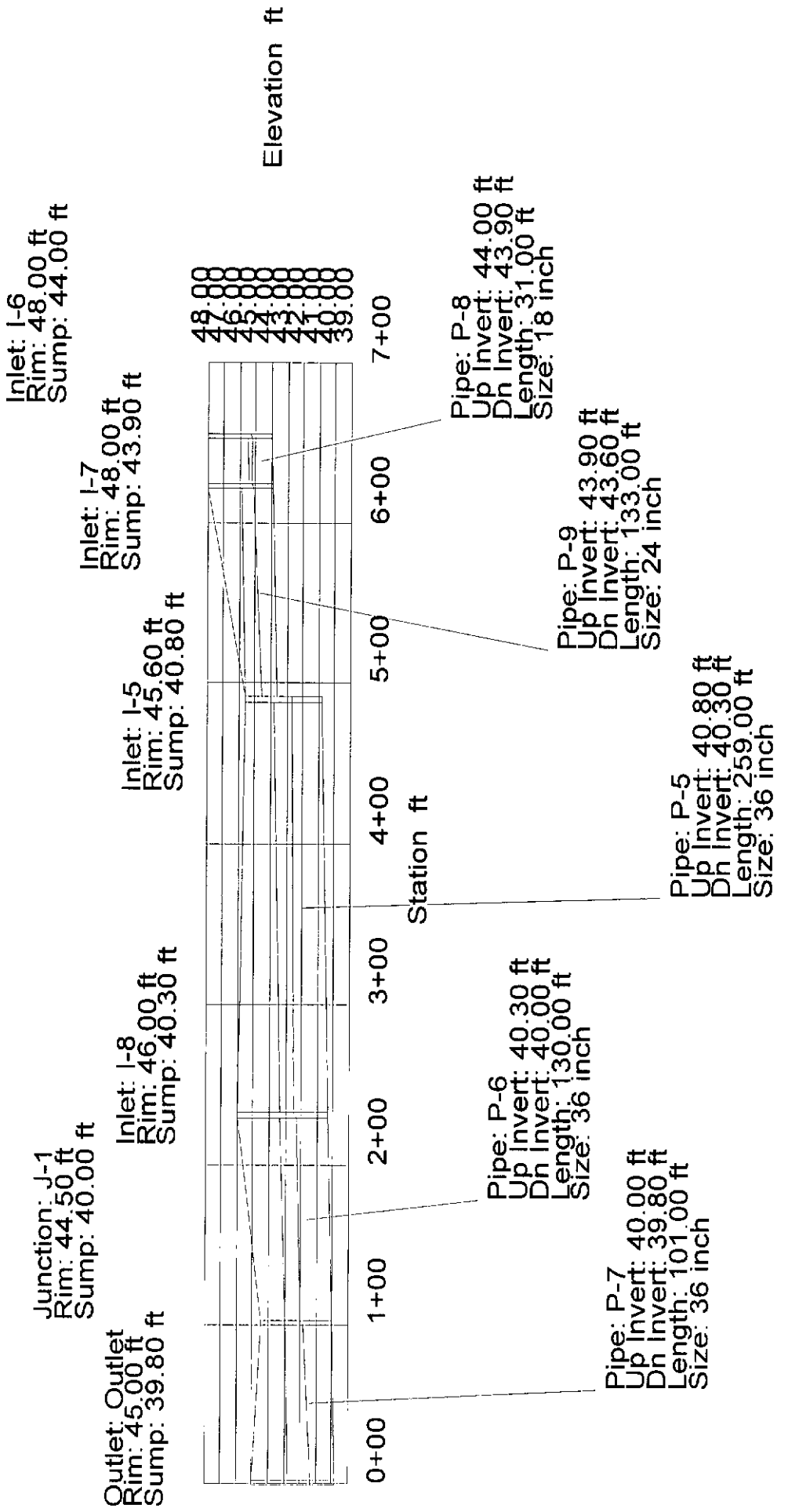
Pipe: P-7  
 Up Invert: 40.00 ft  
 Dn Invert: 39.80 ft  
 Length: 101.00 ft  
 Size: 36 inch

Pipe: P-6  
 Up Invert: 40.30 ft  
 Dn Invert: 40.00 ft  
 Length: 130.00 ft  
 Size: 36 inch

Pipe: P-10  
 Up Invert: 42.00 ft  
 Dn Invert: 40.30 ft  
 Length: 121.00 ft  
 Size: 15 inch





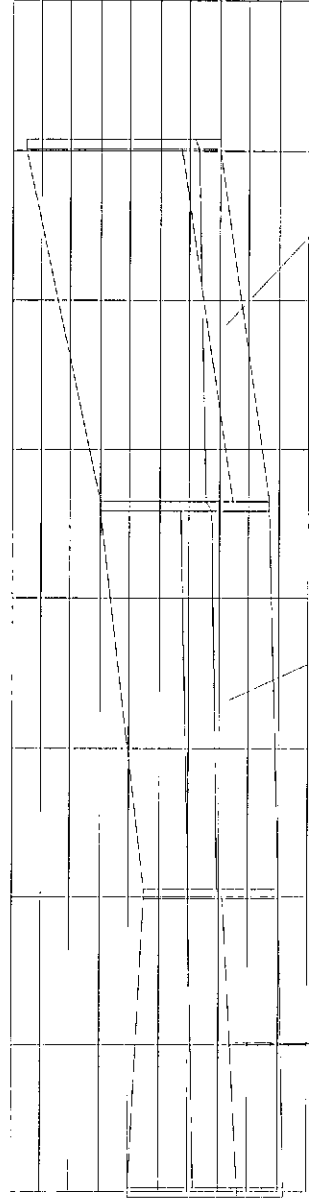


Junction: J-1  
 Rim: 44.50 ft  
 Sump: 40.00 ft

Outlet: Outlet  
 Rim: 45.00 ft  
 Sump: 39.80 ft

Inlet: I-9  
 Rim: 48.50 ft  
 Sump: 42.00 ft

Inlet: I-8  
 Rim: 46.00 ft  
 Sump: 40.30 ft



0+00 0+50 1+00 1+50 2+00 2+50 3+00 3+50 4+00

Station ft

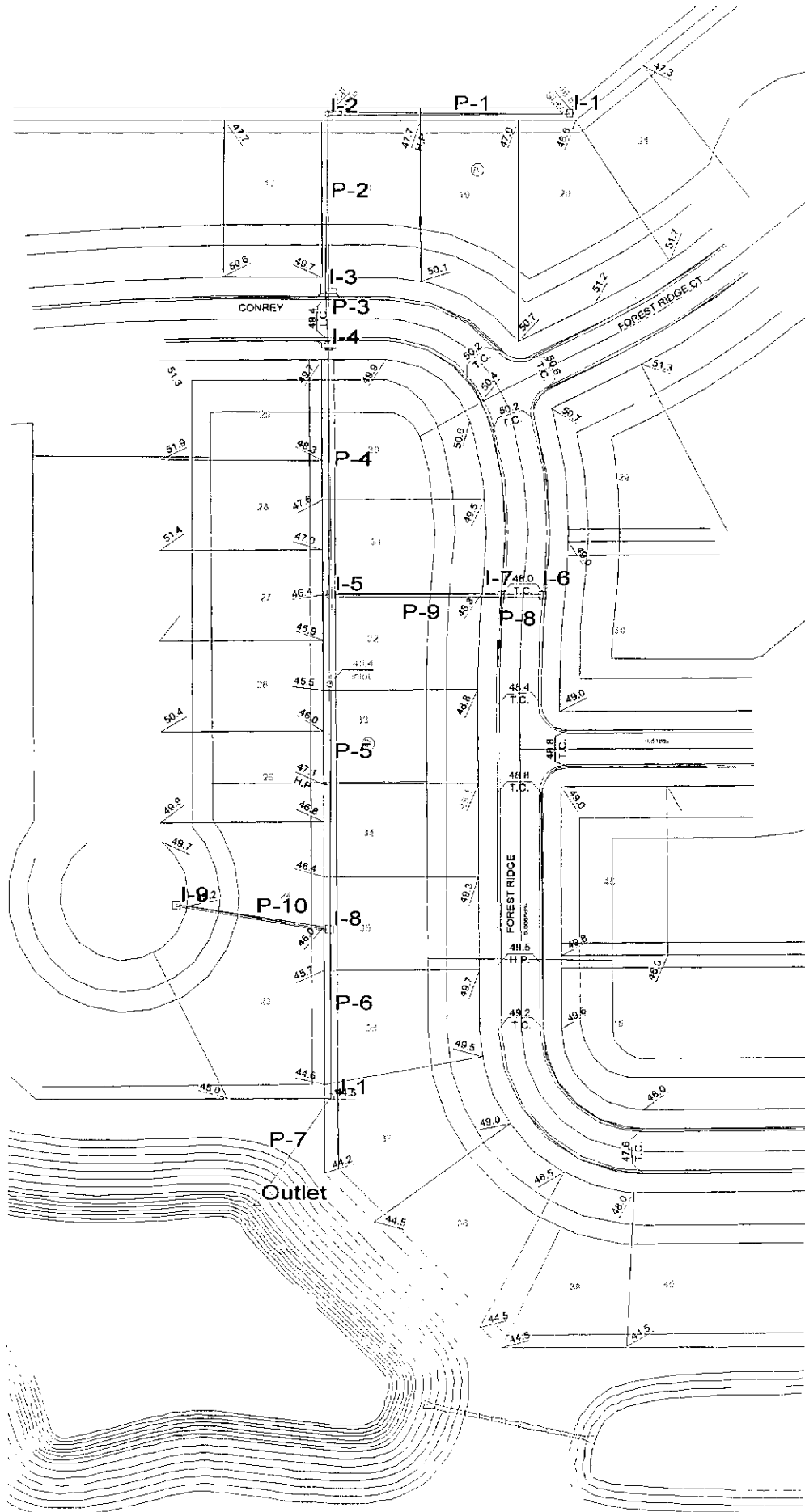
Elevation ft

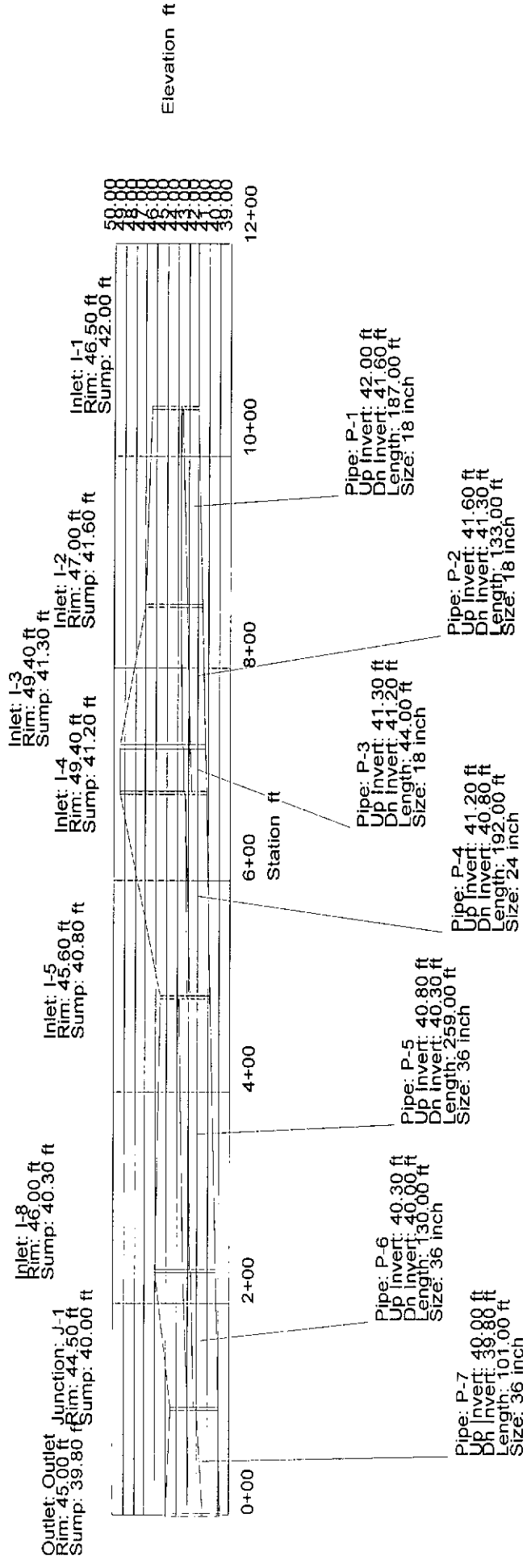
49.00  
 48.50  
 47.00  
 46.00  
 44.50  
 44.50  
 43.00  
 41.00  
 39.80

Pipe: P-10  
 Up Invert: 42.00 ft  
 Dn Invert: 40.30 ft  
 Length: 121.00 ft  
 Size: 15 inch

Pipe: P-6  
 Up Invert: 40.30 ft  
 Dn Invert: 40.00 ft  
 Length: 130.00 ft  
 Size: 36 inch

Pipe: P-7  
 Up Invert: 40.00 ft  
 Dn Invert: 39.80 ft  
 Length: 101.00 ft  
 Size: 36 inch





Inlet: I-6  
 Rim: 48.00 ft  
 Sump: 44.00 ft

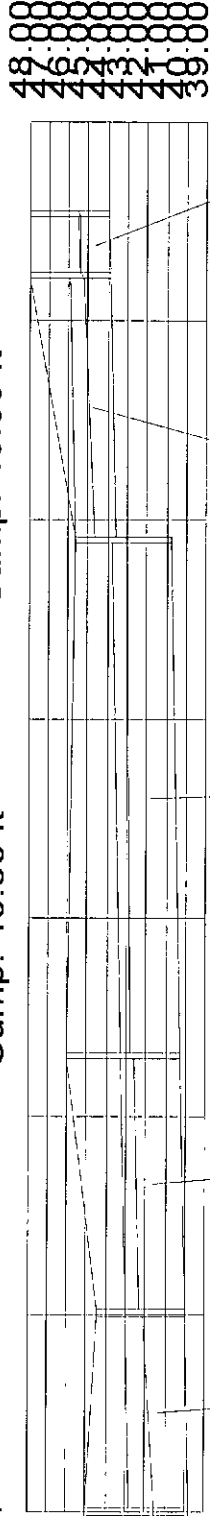
Junction: J-1  
 Rim: 44.50 ft  
 Sump: 40.00 ft

Outlet: Outlet  
 Rim: 45.00 ft  
 Sump: 39.80 ft

Inlet: I-8  
 Rim: 46.00 ft  
 Sump: 40.30 ft

Inlet: I-5  
 Rim: 45.60 ft  
 Sump: 40.80 ft

Inlet: I-7  
 Rim: 48.00 ft  
 Sump: 43.90 ft



Pipe: P-6  
 Up Invert: 40.30 ft  
 Dn Invert: 40.00 ft  
 Length: 130.00 ft  
 Size: 36 inch

Pipe: P-7  
 Up Invert: 40.00 ft  
 Dn Invert: 39.80 ft  
 Length: 101.00 ft  
 Size: 36 inch

Pipe: P-5  
 Up Invert: 40.80 ft  
 Dn Invert: 40.30 ft  
 Length: 259.00 ft  
 Size: 36 inch

Pipe: P-9  
 Up Invert: 43.90 ft  
 Dn Invert: 43.60 ft  
 Length: 133.00 ft  
 Size: 24 inch

Pipe: P-8  
 Up Invert: 44.00 ft  
 Dn Invert: 43.90 ft  
 Length: 31.00 ft  
 Size: 18 inch

Elevation ft

Station ft

Inlet: I-6  
 Rim: 48.00 ft  
 Sump: 44.00 ft

Junction: J-1  
 Rim: 44.50 ft  
 Sump: 40.00 ft

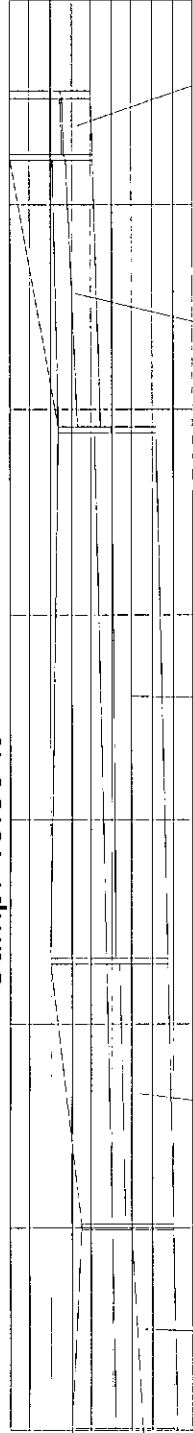
Outlet: Outlet  
 Rim: 45.00 ft  
 Sump: 39.80 ft

Inlet: I-7  
 Rim: 48.00 ft  
 Sump: 43.90 ft

Inlet: I-5  
 Rim: 45.60 ft  
 Sump: 40.80 ft

Inlet: I-8  
 Rim: 46.00 ft  
 Sump: 40.30 ft

48.00  
 47.00  
 46.00  
 44.00  
 43.00  
 42.00  
 41.00  
 39.00



Elevation ft

7+00

6+00

5+00

4+00

3+00

2+00

1+00

0+00

Station ft

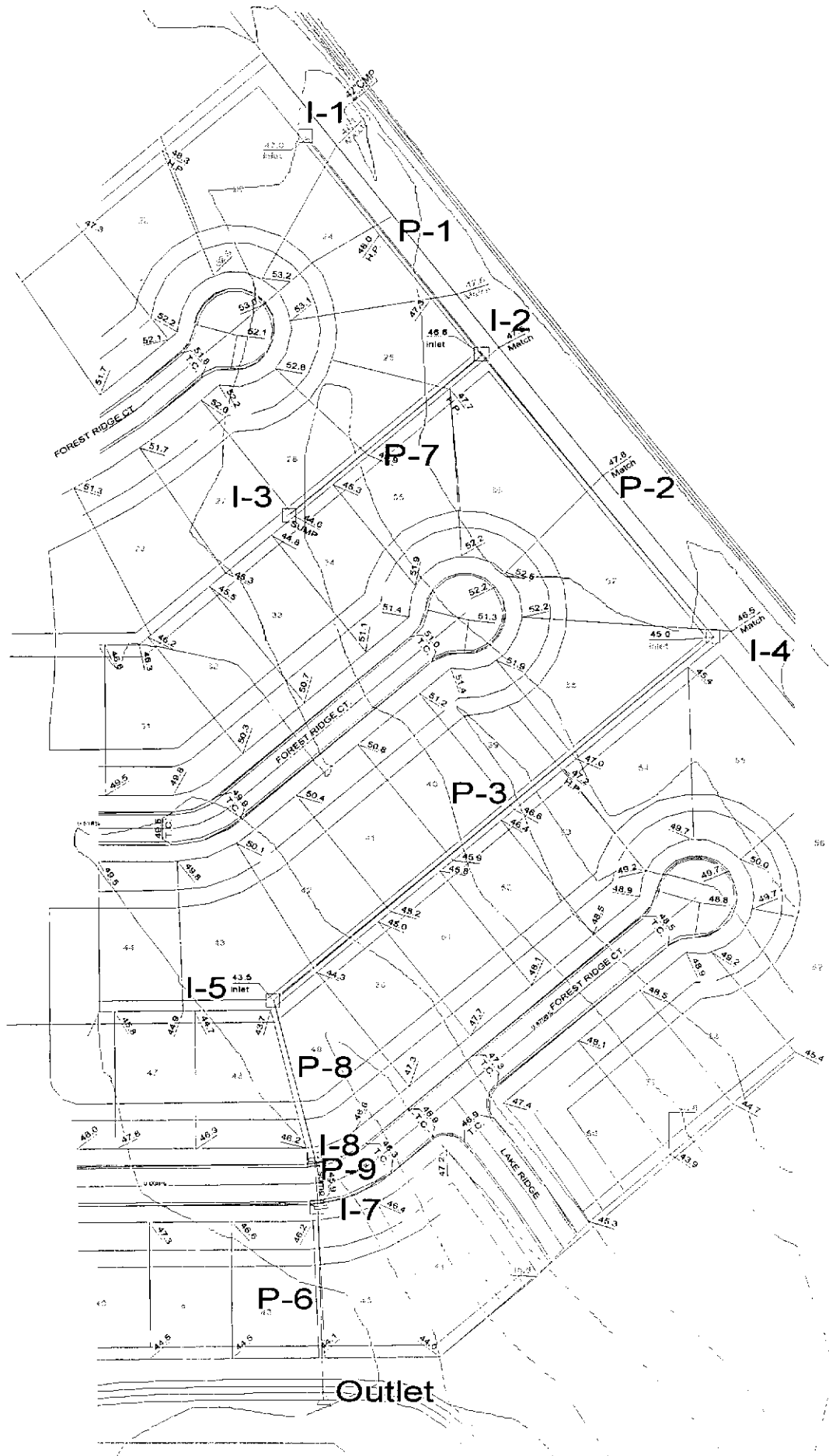
Pipe: P-9  
 Up Invert: 43.90 ft  
 Dn Invert: 43.60 ft  
 Length: 133.00 ft  
 Size: 24 inch

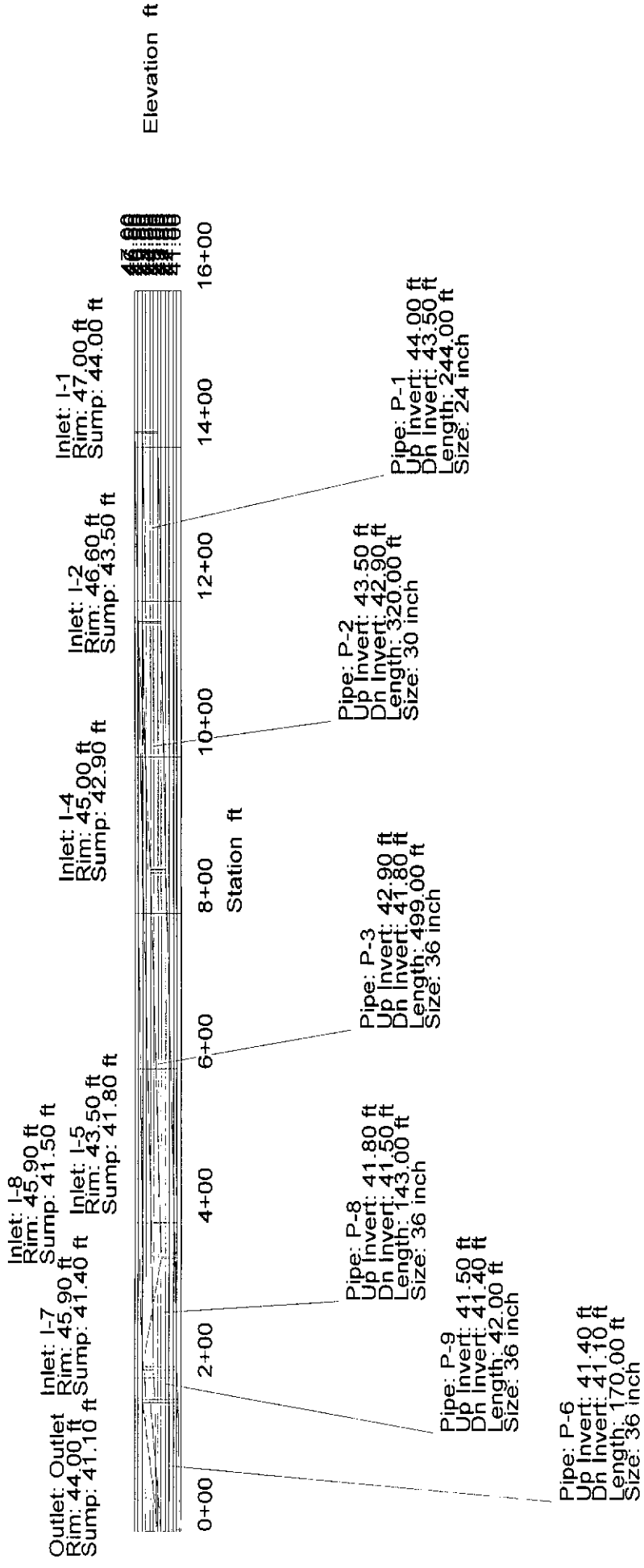
Pipe: P-8  
 Up Invert: 44.00 ft  
 Dn Invert: 43.90 ft  
 Length: 31.00 ft  
 Size: 18 inch

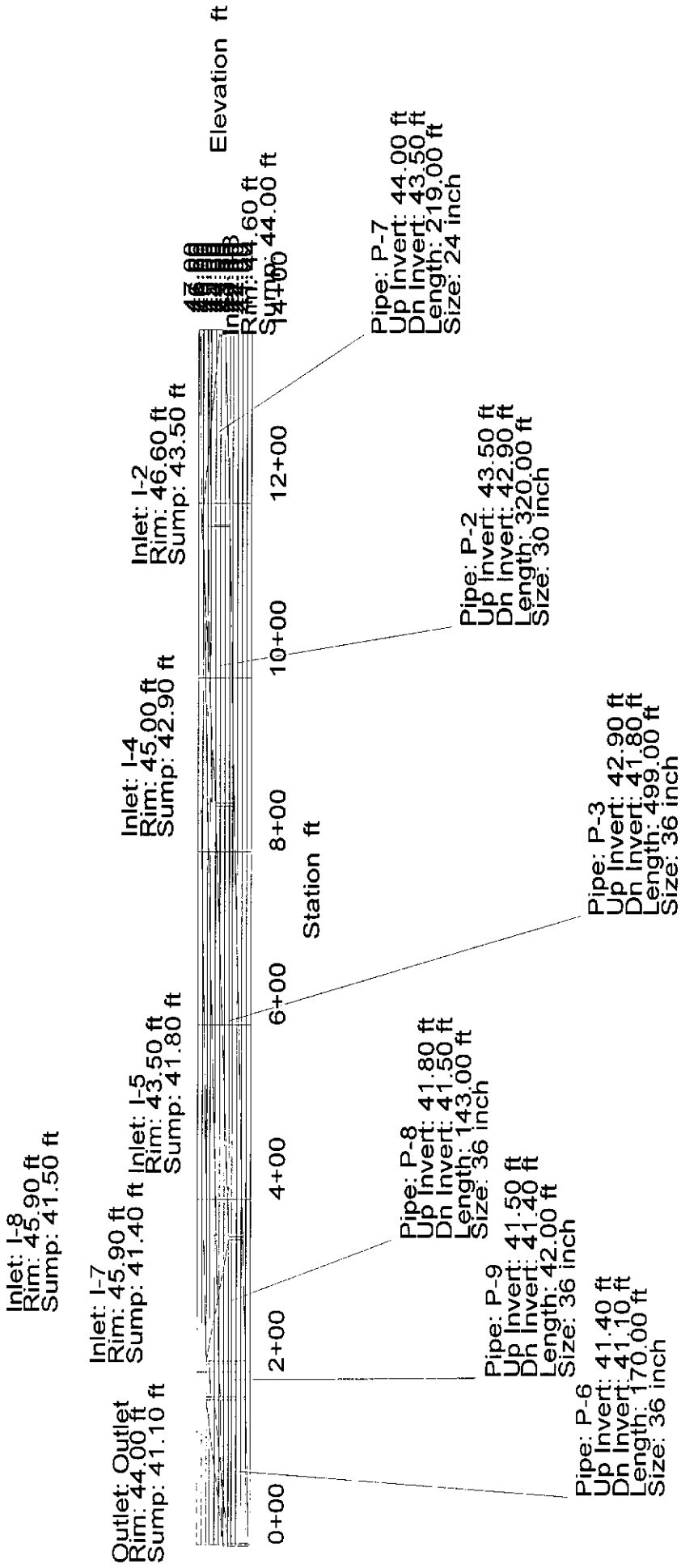
Pipe: P-5  
 Up Invert: 40.80 ft  
 Dn Invert: 40.30 ft  
 Length: 259.00 ft  
 Size: 36 inch

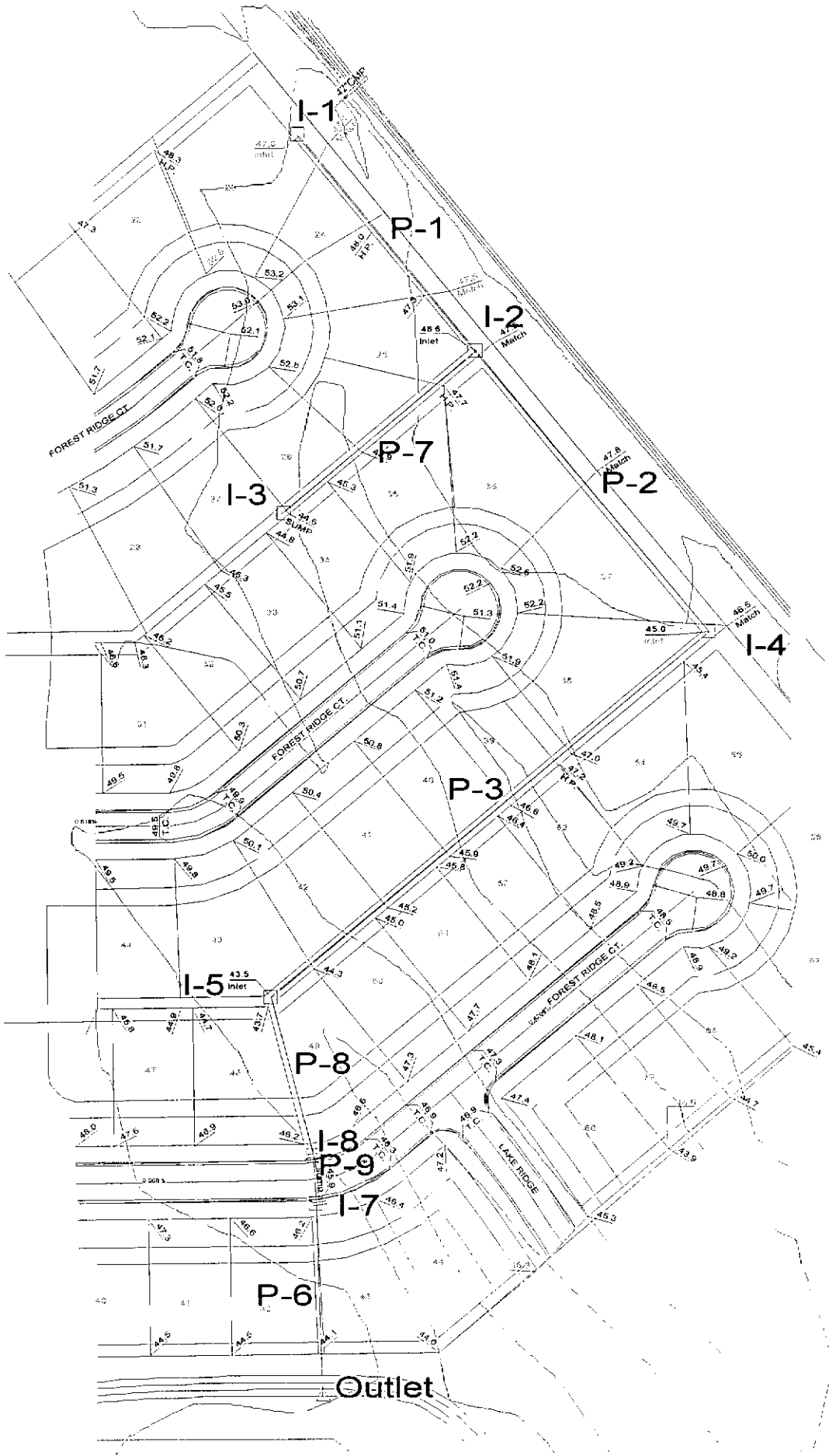
Pipe: P-6  
 Up Invert: 40.30 ft  
 Dn Invert: 40.00 ft  
 Length: 130.00 ft  
 Size: 36 inch

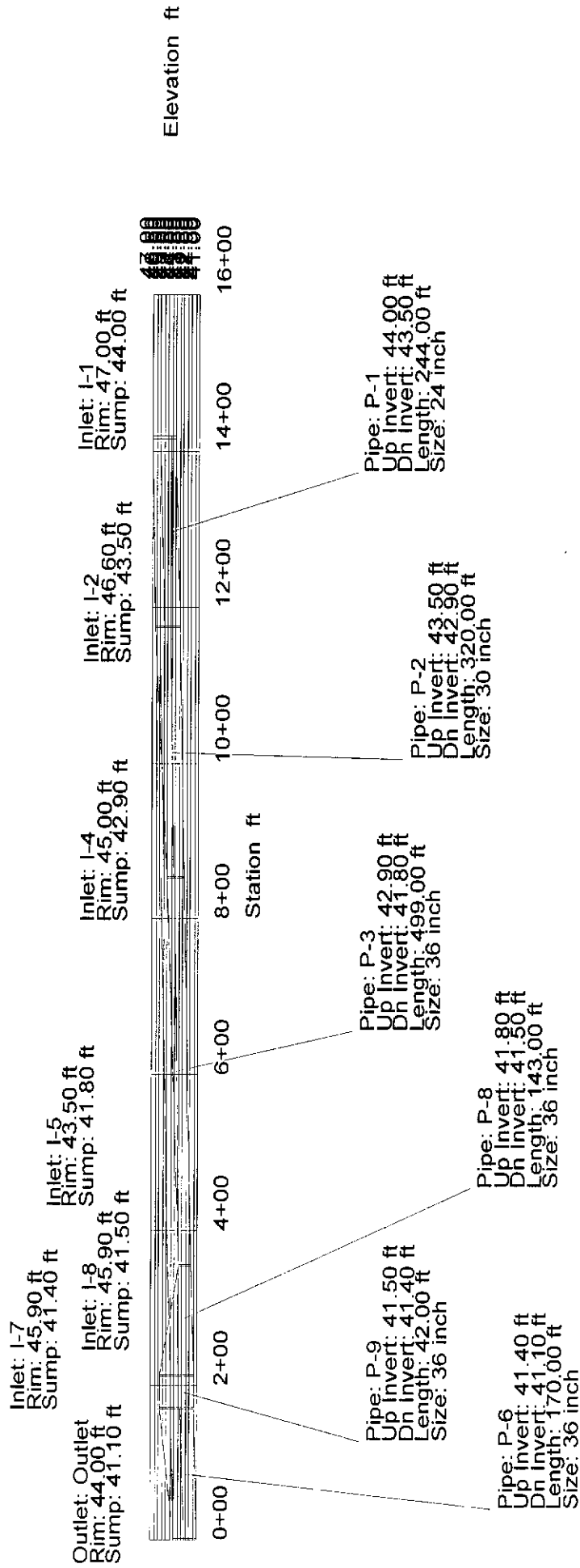
Pipe: P-7  
 Up Invert: 40.00 ft  
 Dn Invert: 39.80 ft  
 Length: 101.00 ft  
 Size: 36 inch

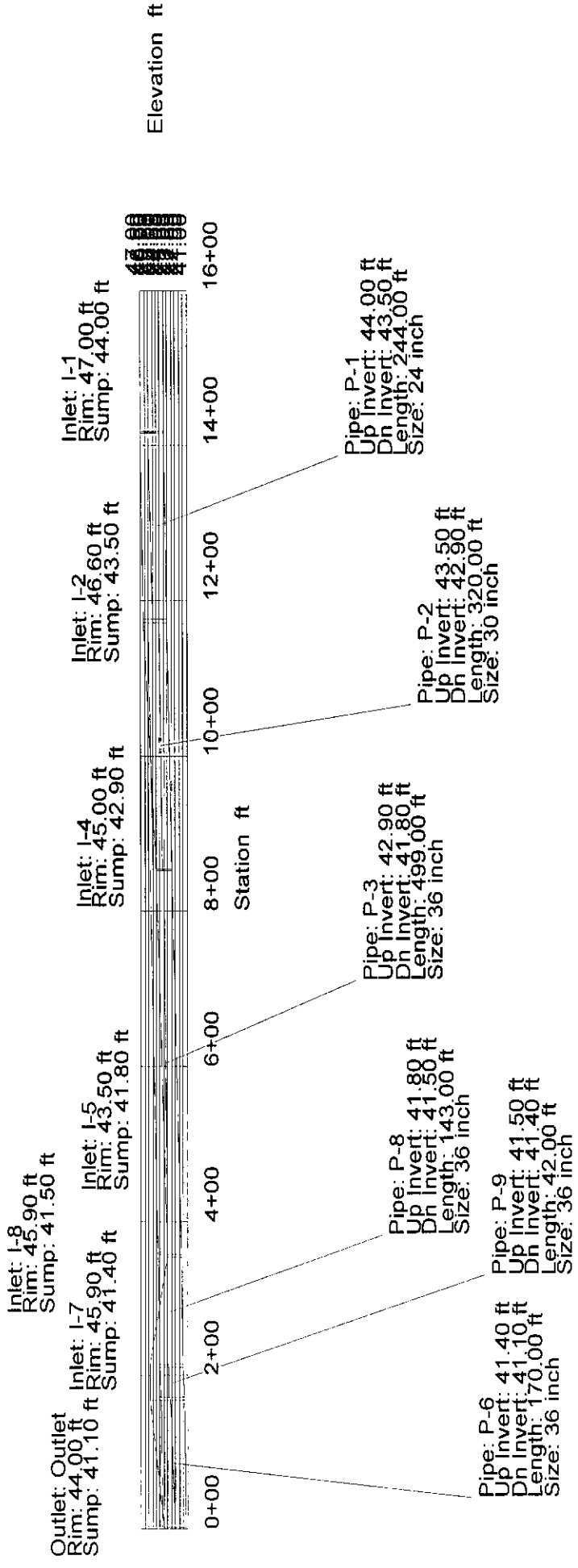




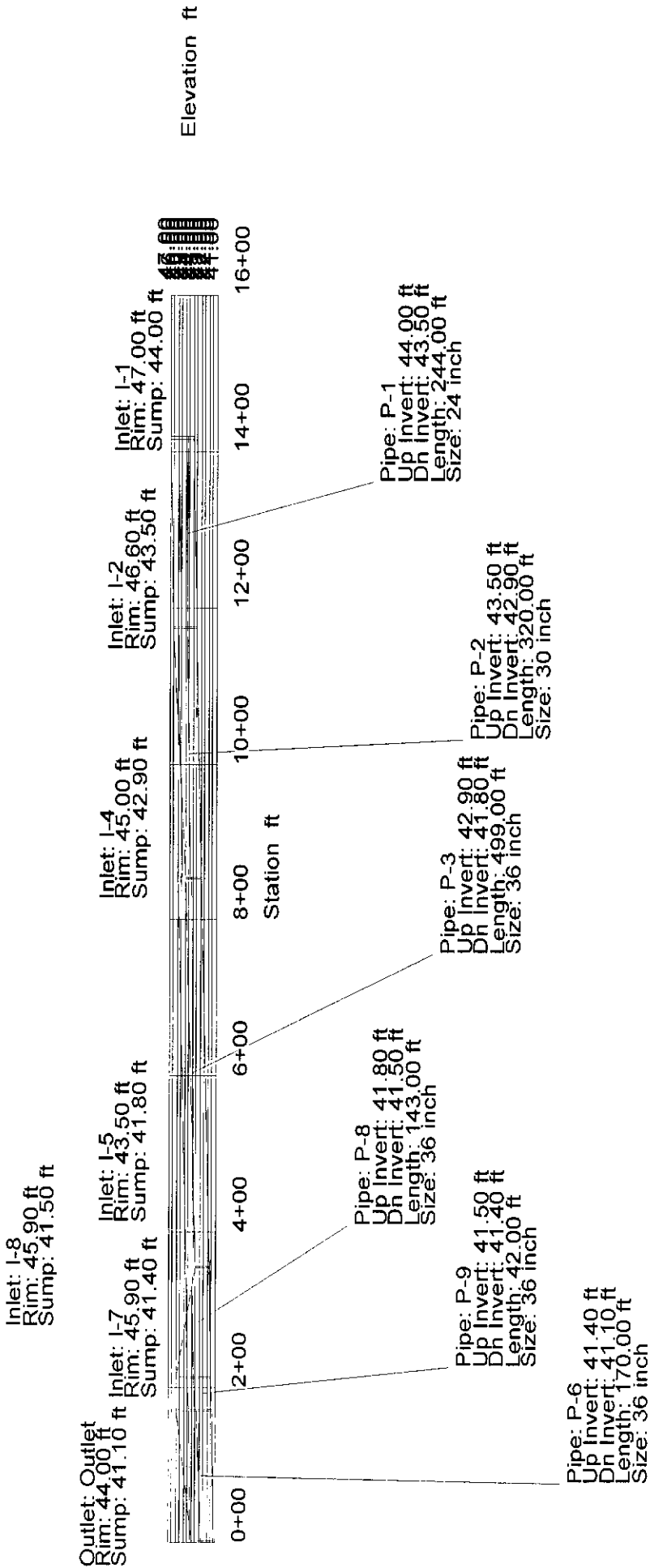












Inlet: I-7  
 Rim: 45.90 ft  
 Sump: 41.40 ft

Outlet: Outlet  
 Rim: 44.00 ft  
 Sump: 41.10 ft

Inlet: I-8  
 Rim: 45.90 ft  
 Sump: 41.50 ft

Inlet: I-5  
 Rim: 43.50 ft  
 Sump: 41.80 ft

Inlet: I-4  
 Rim: 45.00 ft  
 Sump: 42.90 ft

Inlet: I-2  
 Rim: 46.60 ft  
 Sump: 43.50 ft

Inlet: I-3  
 Rim: 44.60 ft  
 Sump: 44.00 ft



Pipe: P-8  
 Up Invert: 41.80 ft  
 Dn Invert: 41.50 ft  
 Length: 143.00 ft  
 Size: 36 inch

Pipe: P-9  
 Up Invert: 41.50 ft  
 Dn Invert: 41.40 ft  
 Length: 42.00 ft  
 Size: 36 inch

Pipe: P-6  
 Up Invert: 41.40 ft  
 Dn Invert: 41.10 ft  
 Length: 170.00 ft  
 Size: 36 inch

Pipe: P-3  
 Up Invert: 42.90 ft  
 Dn Invert: 41.80 ft  
 Length: 499.00 ft  
 Size: 36 inch

Pipe: P-2  
 Up Invert: 43.50 ft  
 Dn Invert: 42.90 ft  
 Length: 320.00 ft  
 Size: 30 inch

Pipe: P-7  
 Up Invert: 44.00 ft  
 Dn Invert: 43.50 ft  
 Length: 219.00 ft  
 Size: 24 inch