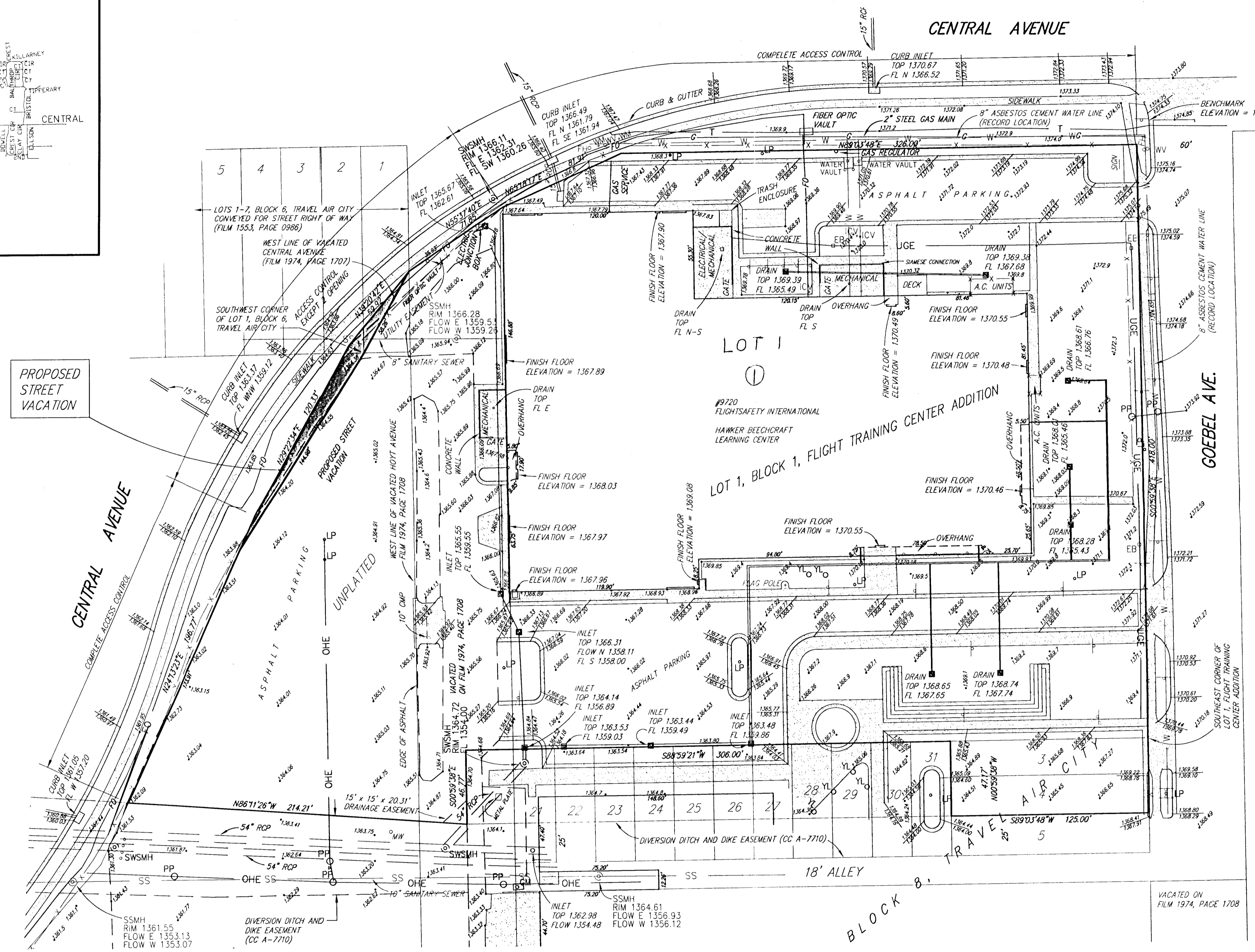
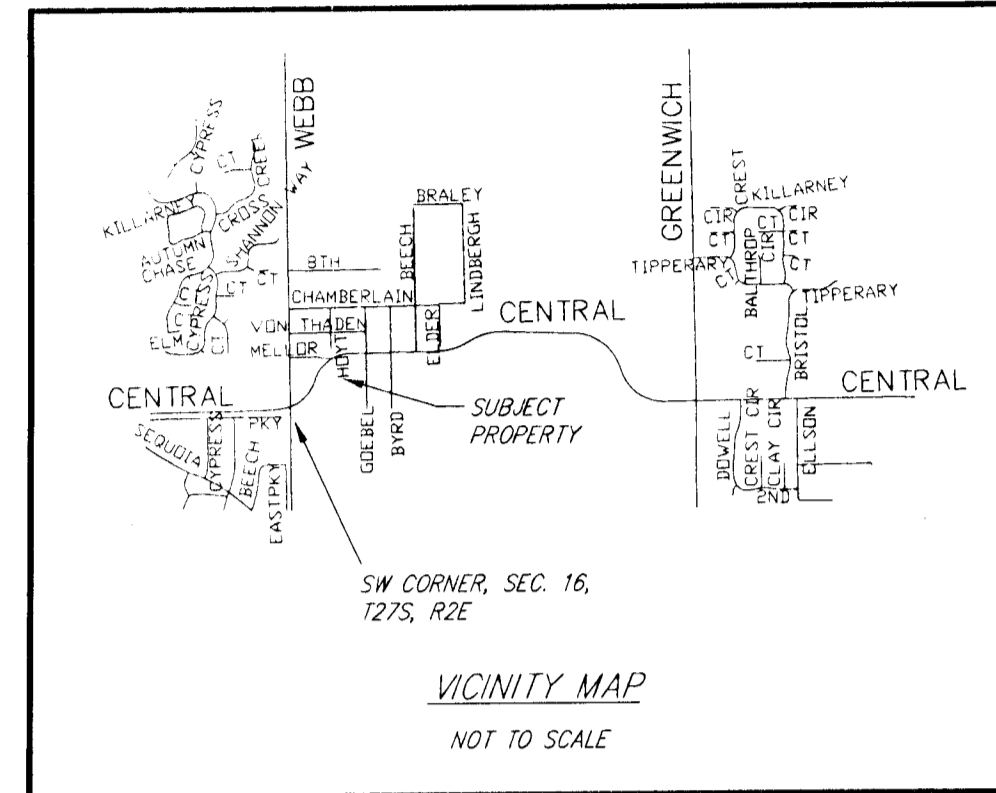


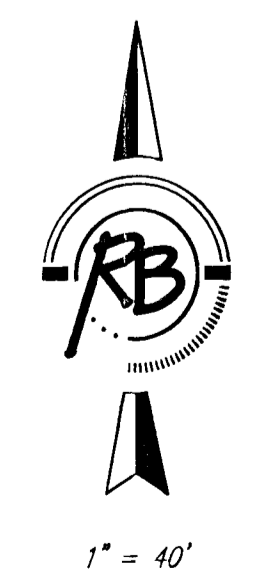
# Preliminary Plat

# FLIGHT SAFETY ADDITION

## Sedgwick County, Kansas



- LEGEND**
- SS . . . . . SANITARY SEWER (CITY OF WICHITA)
  - SWS . . . . . STORM WATER SEWER (CITY OF WICHITA)
  - OHE . . . . . OVERHEAD ELECTRIC (WESTAR)
  - UGE . . . . . UNDERGROUND ELECTRIC (WESTAR)
  - T . . . . . UNDERGROUND TELEPHONE (ATT)
  - FO . . . . . FIBER OPTIC
  - G . . . . . GAS LINE (KANSAS GAS SERVICE)
  - W . . . . . WATER MAIN (CITY OF WICHITA)
  - GM . . . . . GAS METER
  - FH . . . . . FIRE HYDRANT
  - WV . . . . . WATER VALVE
  - WM . . . . . WATER METER
  - ICV . . . . . IRRIGATION CONTROL VALVE
  - S . . . . . SIGN
  - TSSB . . . . . TRAFFIC SIGNAL BOX
  - TSP . . . . . TRAFFIC SIGNAL POLE
  - TMH . . . . . TRAFFIC SIGNAL MANHOLE
  - MW . . . . . MONITORING WELL
  - B . . . . . BOLLARD
  - EB . . . . . ELECTRIC BOX
  - YL . . . . . YARD LIGHT
  - PP . . . . . POWER POLE (WESTAR)
  - LP . . . . . LIGHT POLE
  - GA . . . . . GUY ANCHOR
  - MH . . . . . MANHOLE
  - SWSMH . . . . . STORM SEWER MANHOLE (CITY OF WICHITA)
  - SSMH . . . . . SANITARY SEWER MANHOLE (CITY OF WICHITA)
  - SP . . . . . LOCATION OF SPOT ELEVATION



BENCHMARK: CITY OF WICHITA BENCHMARK AT THE  
SOUTHWEST CORNER OF A PCB, 200'± NORTH  
OF CENTRAL AND 40.41' WEST OF BACK OF CURB  
OF EAST MEDIAN CURB ON WEBB ROAD  
ELEVATION = 1362.13 (NGVD29)

BENCHMARK: CHISELED SQUARE ON THE TOP  
OF CURB AT THE NORTH CURB RETURN ON THE  
EAST SIDE OF THE DRIVE ENTRANCE OFF OF OLD  
CENTRAL AT THE SOUTHWEST CORNER OF  
BEECH ACTIVITY CENTER  
ELEVATION = 1363.10 (NGVD29)

BENCHMARK: CHISELED SQUARE ON THE TOP  
OF CURB AT THE SOUTH CURB RETURN AT THE  
SOUTHWEST CORNER OF CENTRAL AND GOEBEL  
AVENUE  
ELEVATION = 1375.02 (NGVD29)

**LEGAL DESCRIPTION:**  
A tract of land located in the Southwest Quarter of Section 16, Township 27 South, Range 2 East of the Sixth Principal Meridian, Sedgwick County, Kansas, described as beginning at the Southwest corner of Lot 1, Block 6, Travel Air City, Sedgwick County, Kansas; thence northeast to a point on the East line of said Lot 1, 50.41 feet north of the Southeast corner of said Lot 1; thence south 345.41 feet; thence northwesterly to the East line of relocated Central Avenue; thence northeasterly along relocated Central Avenue to the point of beginning; and the west half of vacated Hoyt Avenue adjacent thereto.

Lot 1, Block 1, Flight Training Center Addition, Sedgwick County, Kansas, EXCEPT that part described as beginning at the Northwest corner of said Lot 1; Thence South along the West line of said Lot 1, a distance of 33.00 feet; thence Northeasterly to a point on the North line of said Lot 1, said point located 75.00 feet East of said Northwest corner; Thence West along said North line, a distance of 75.00 feet to the point of beginning; together with the east half of vacated Hoyt Avenue adjacent thereto.

The south 22.33 feet of Lot 3, and all of Lot 4, Block 8, Travel Air City, Sedgwick County, Kansas.

That part of Central Avenue described as beginning on the east line of Lot 1, Block 6, 50.41 feet north of the southeast corner, Travel Air City, Sedgwick County, Kansas; thence S29°09'34"W, 58.26 feet to the southwest corner of said Lot 1; thence S32°43'18"W along the easterly line of said Central Avenue, 144.98 feet; thence N24°13'23"E, 23.75 feet; thence N29°22'34"E, 120.33 feet; thence N39°20'42"E, 59.92 feet to the place of beginning.

**OWNER:**  
Hawker Beechcraft Corporation  
10511 E. Central  
Wichita, KS 67206

**SURVEYOR & ENGINEER:**  
Ruggles & Bohm P.A., Attn: Tom Ruggles

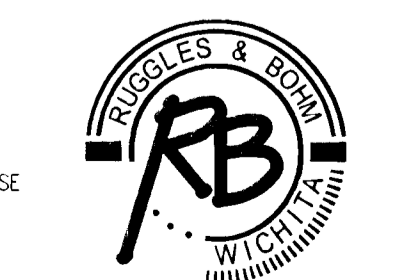
**PROPOSED ZONING:** LI

**EXISTING ZONING:** LI  
Property to the north is zoned SF-5 (across Central)  
The rest of the surrounding property is zoned LI and GC

**FLOOD ZONE:**  
According to the FEMA/FIRM Community Panel No. 200321 0378 E, effective February 2, 2007; the property shown hereon is located in Zone X

**GROSS AREA:**  
208562.9± Sq. Ft.  
4.79± Acres

**DATE OF TOPOGRAPHY:**  
JANUARY 12, 2008



**Ruggles & Bohm, P.A.**  
Engineering, Surveying, Land Planning

924 North Main (316) 264-8008  
Wichita, Kansas 67203 (316) 264-4621 fax  
www.rbkansas.com E-mail: info@rbkansas.com

DWG FILE: SURVEY BASE  
PROJECT NO. 32006  
JANUARY 28, 2008