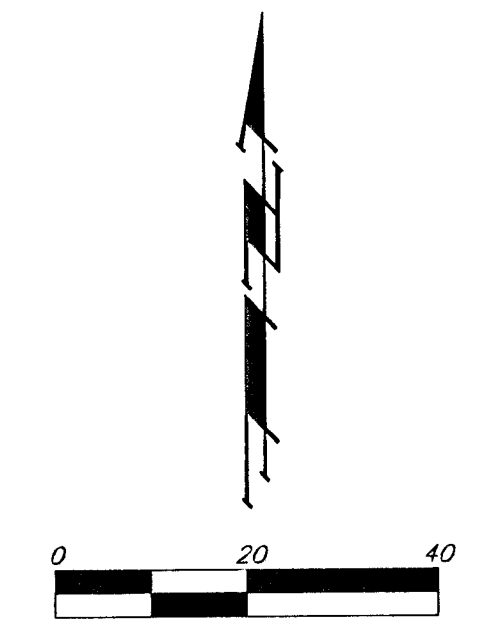


DRAINAGE PLAN

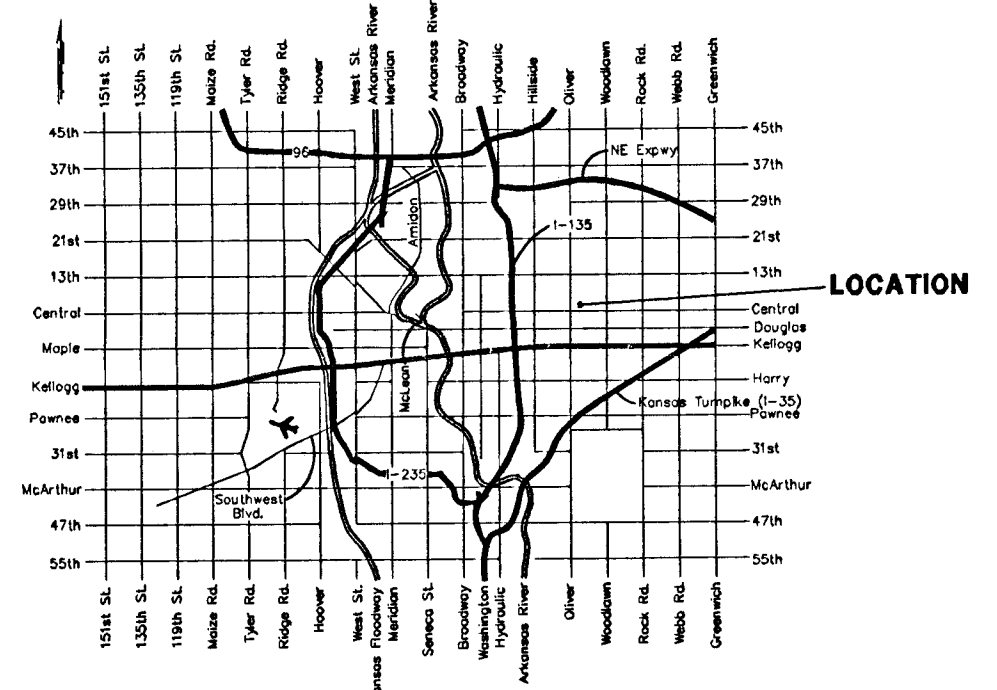
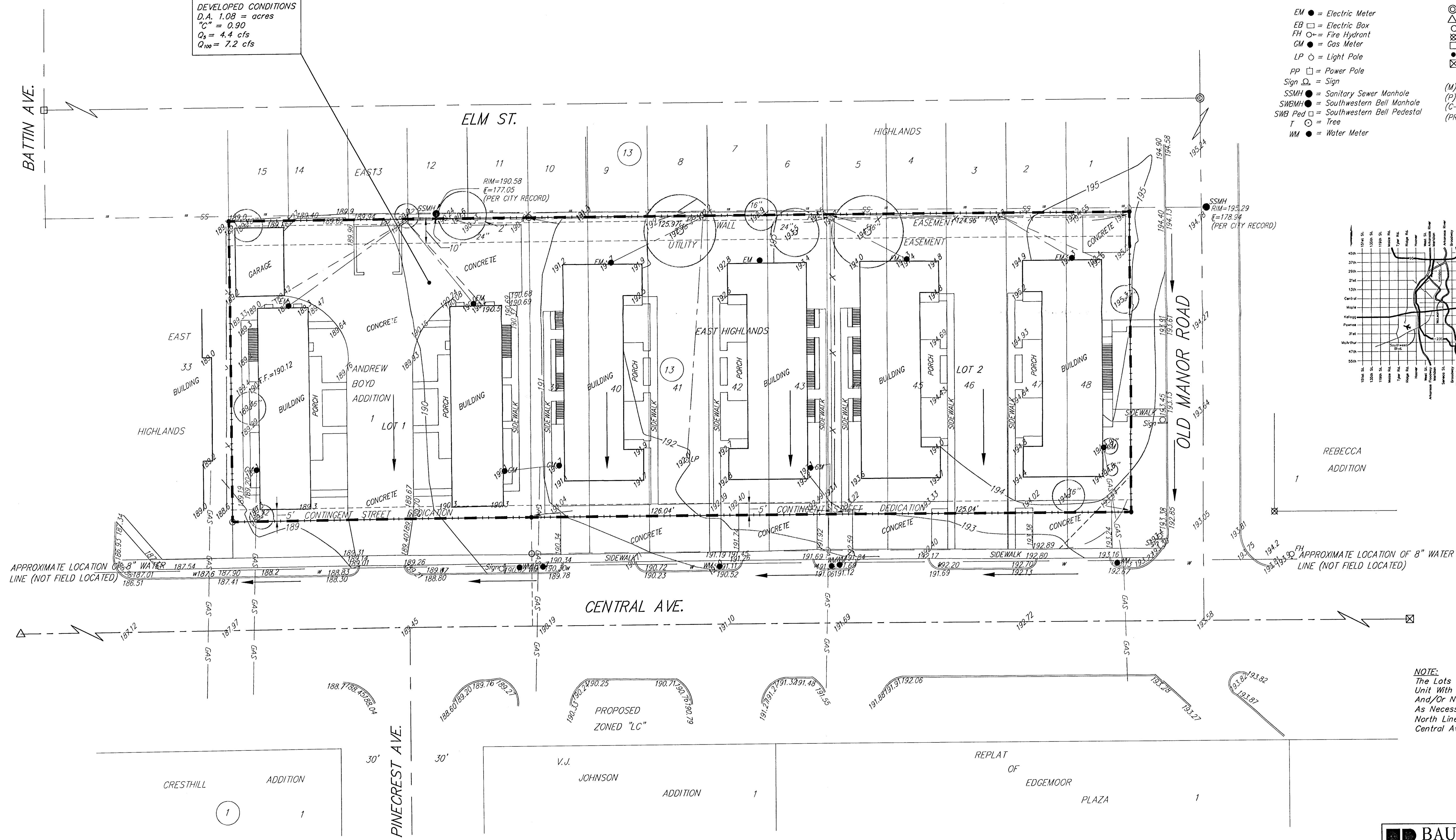
FIVE STAR ADDITION

WICHITA, SEDGWICK COUNTY, KANSAS



DEVELOPED CONDITIONS
 D.A. 1.08 = acres
 "C" = 0.90
 Q₂ = 4.4 cfs
 Q₁₀₀ = 7.2 cfs

- EM ● = Electric Meter
 - EB □ = Electric Box
 - FH ○ = Fire Hydrant
 - GM ● = Gas Meter
 - LP ○ = Light Pole
 - PP □ = Power Pole
 - Sign Ω = Sign
 - SSMH ● = Sanitary Sewer Manhole
 - SWBMH ● = Southwestern Bell Manhole
 - SWB Ped □ = Southwestern Bell Pedestal
 - T ○ = Tree
 - WM ● = Water Meter
- ⊙ = 3/4" IRON IN THIMBLE (FOUND)
 - △ = 1" IRON IN THIMBLE (FOUND)
 - = 1/2" IRON (FOUND)
 - ⊗ = 1/4" IRON (FOUND)
 - ⊠ = EASTERLY 3/4" IRON IN THIMBLE (FOUND)
 - = #4 REBAR W/ "BAUGHMAN" CAP (SET)
 - ⊗ = 1/2" IRON IN THIMBLE (FOUND)
- (M) = MEASURED
 (P) = PLATTED
 (C-P) = CALCULATED PER PLATTED INFO.
 (PRO) = PRORATED



NOTE:
 The Lots Will Be Developed As A One Parcel Unit With Discharge To The Street Via Driveways And/Or Neenah Storm Water Curb Openings As Necessary. Construct Retaining Wall Along North Line As Necessary To Grade South to Central Avenue.