

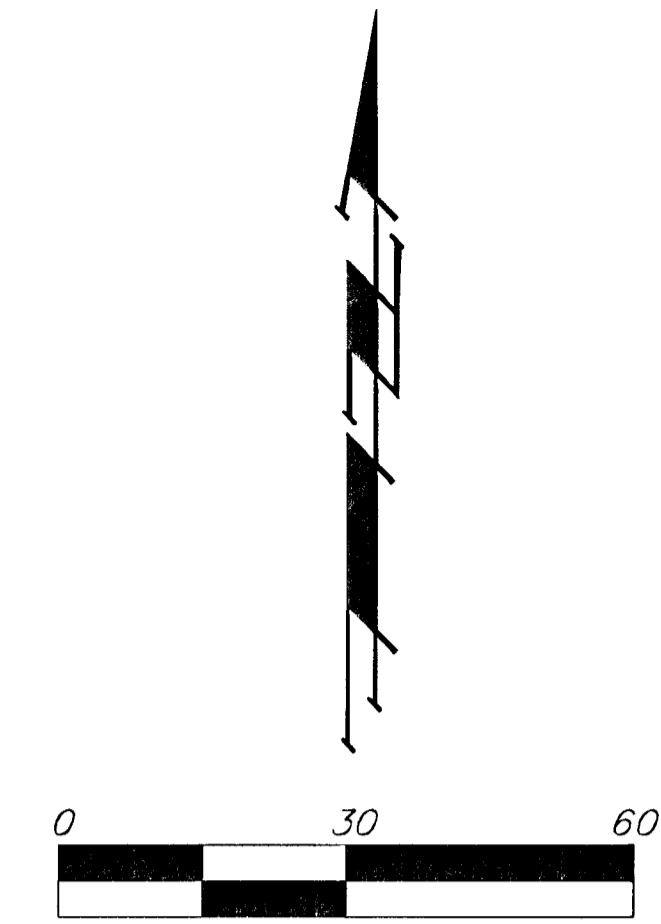
UTILITY PLAN

FIVE STAR ADDITION

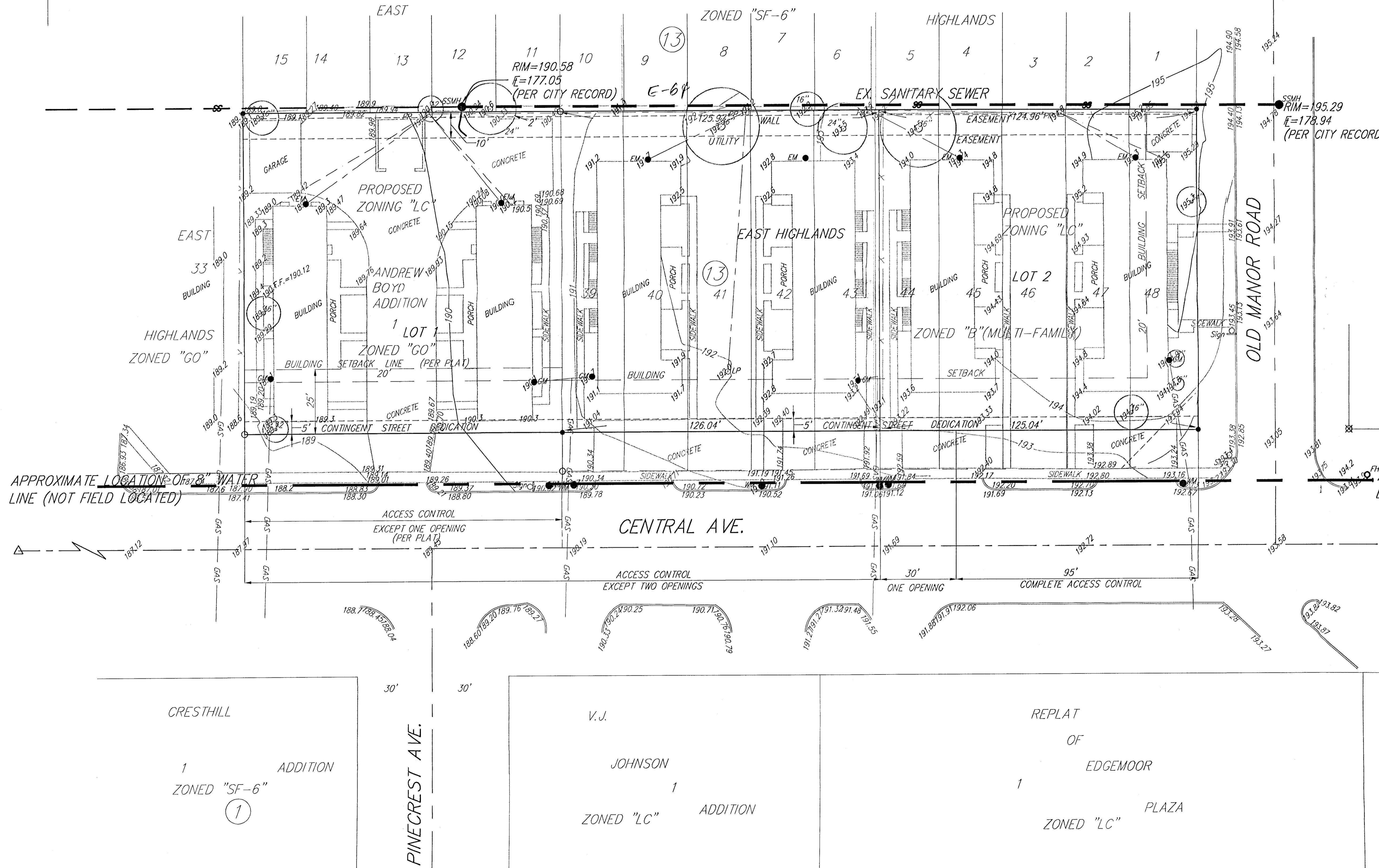
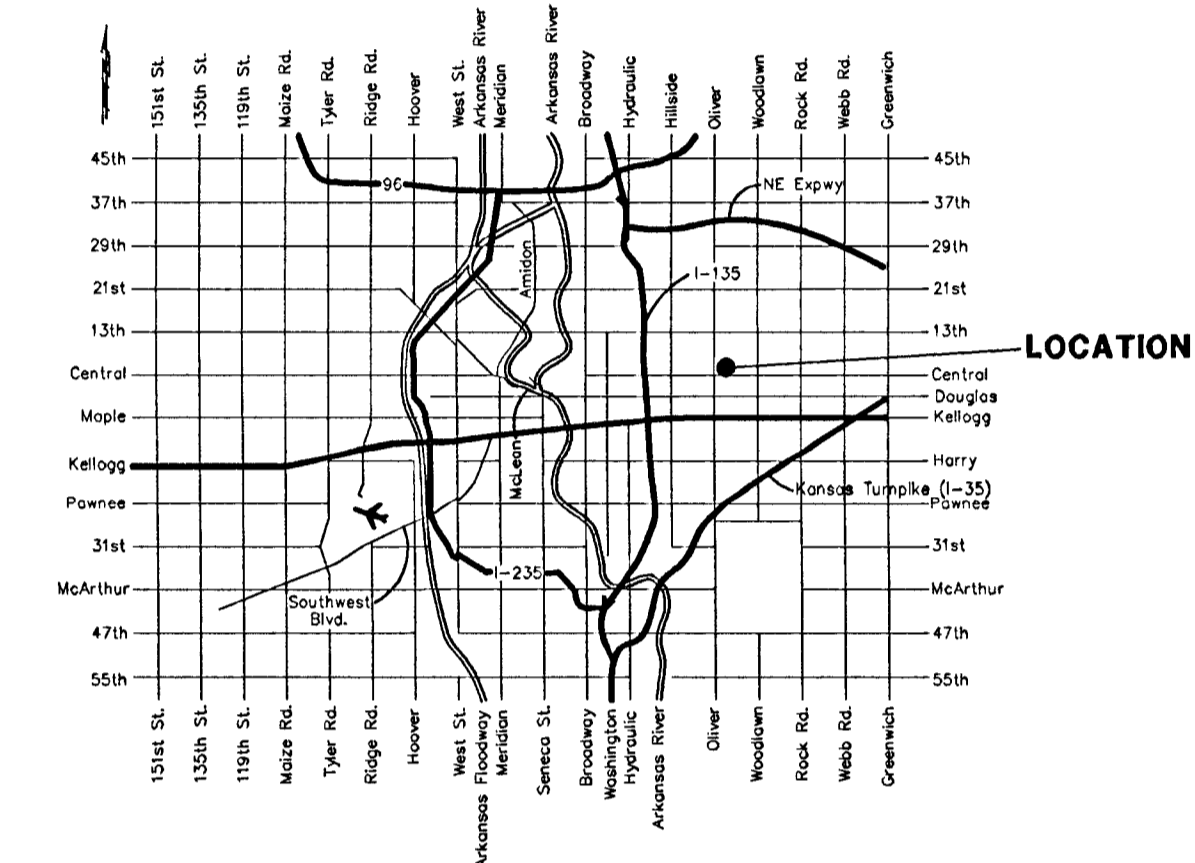
WICHITA, SEDGWICK COUNTY, KANSAS

BATTIN AVE.

ELM ST.

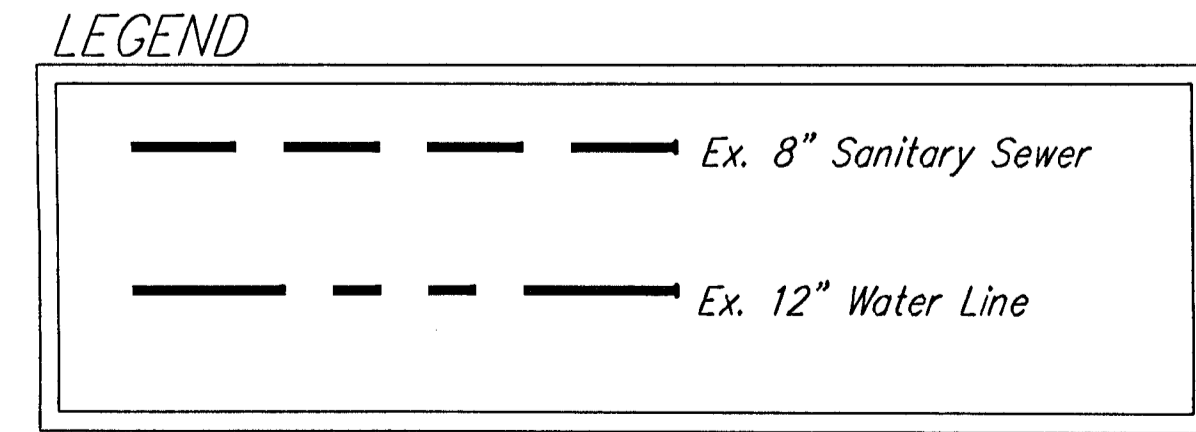


NOTE: LOT 1 SUBJECT TO ADDITIONAL REQUIREMENTS PER CU-563 FOR A CONDITIONAL USE TO ALLOW A CAR WASH FACILITY.



ZONED "NR"
REBECCA
1
ADDITION

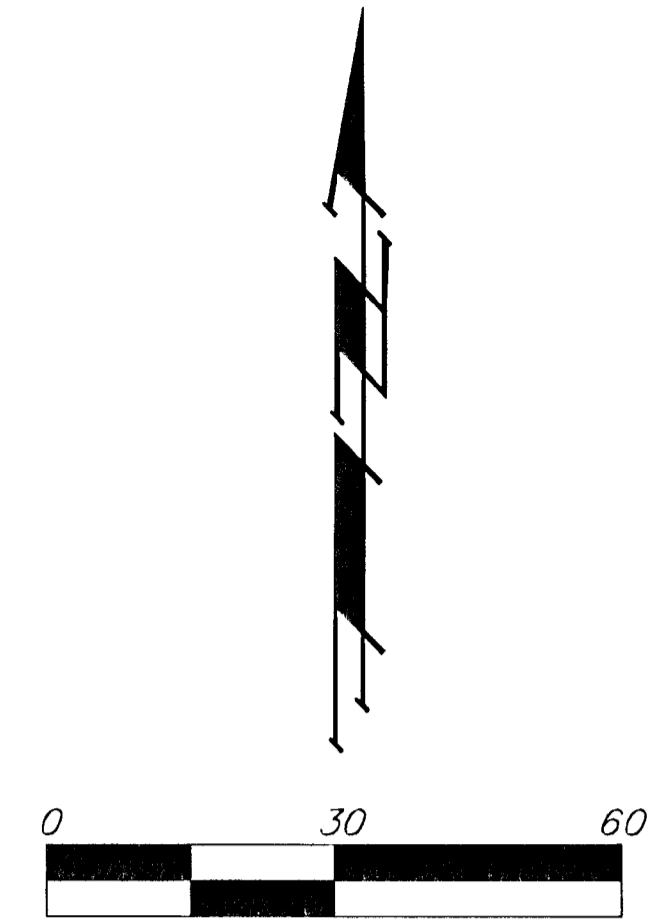
APPROXIMATE LOCATION OF 8" WATER LINE (NOT FIELD LOCATED)



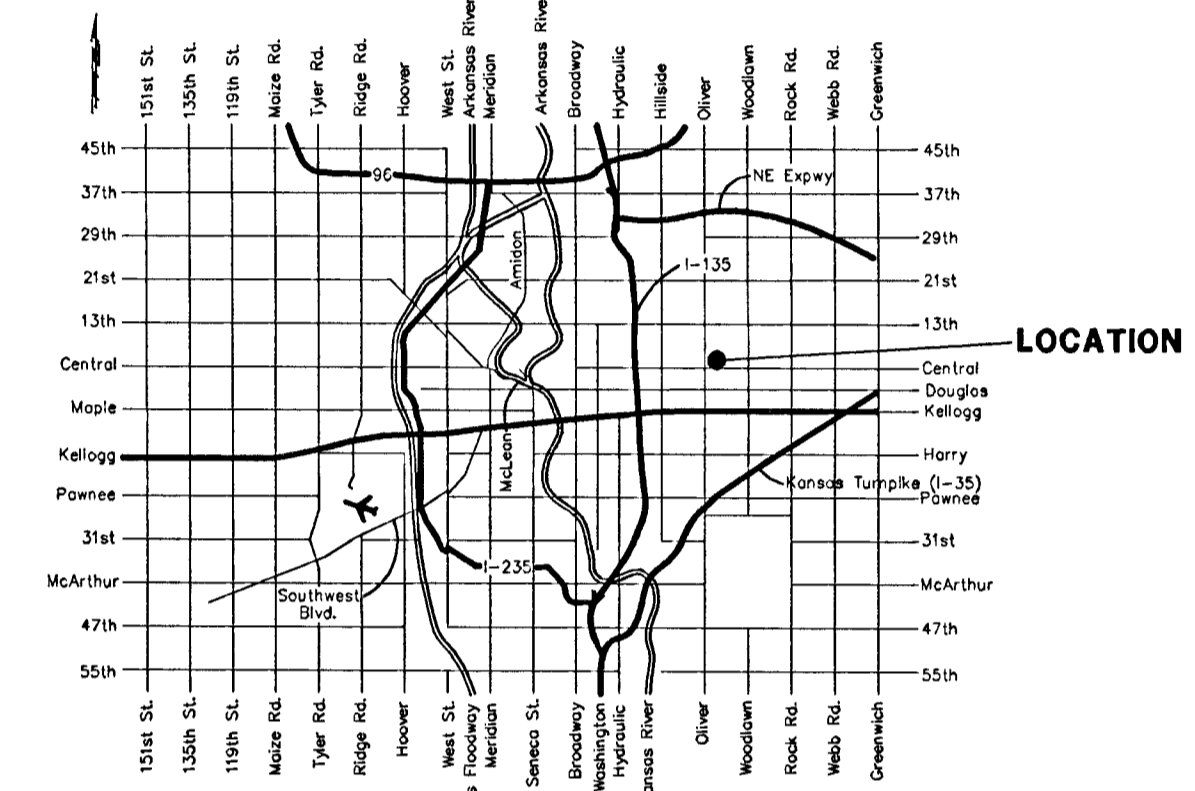
UTILITY PLAN

FIVE STAR ADDITION

WICHITA, SEDGWICK COUNTY, KANSAS

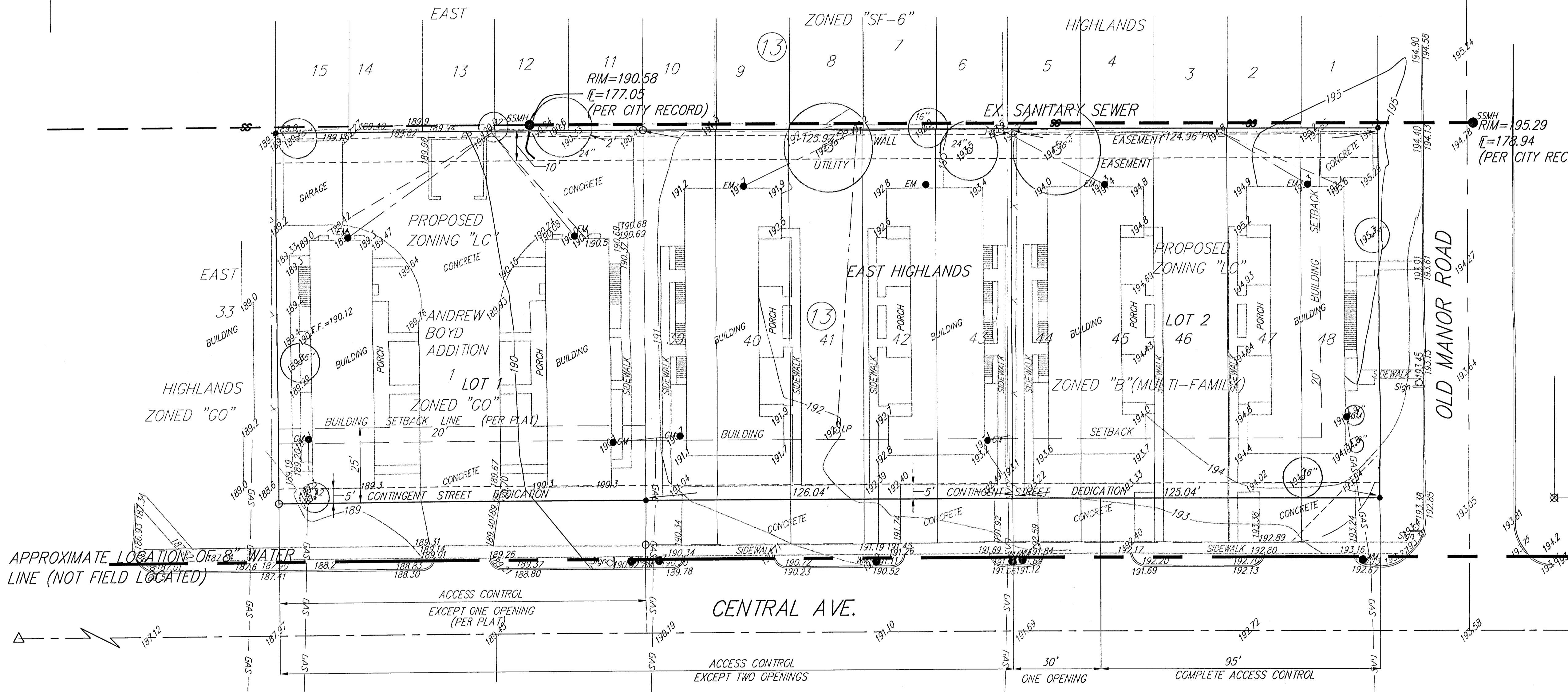


NOTE: LOT 1 SUBJECT TO ADDITIONAL REQUIREMENTS PER CU-563 FOR A CONDITIONAL USE TO ALLOW A CAR WASH FACILITY.



BATTIN AVE.

ELM ST.



ZONED "NR"
REBECCA
1
ADDITION

APPROXIMATE LOCATION OF 8" WATER LINE (NOT FIELD LOCATED)

CENTRAL AVE.

CRESTHILL

1
ADDITION
ZONED "SF-6"

PINECREST AVE.

V.J.
JOHNSON
1
ADDITION
ZONED "LC"

REPLAT
OF
EDGEMOOR
1
ADDITION
ZONED "LC"

