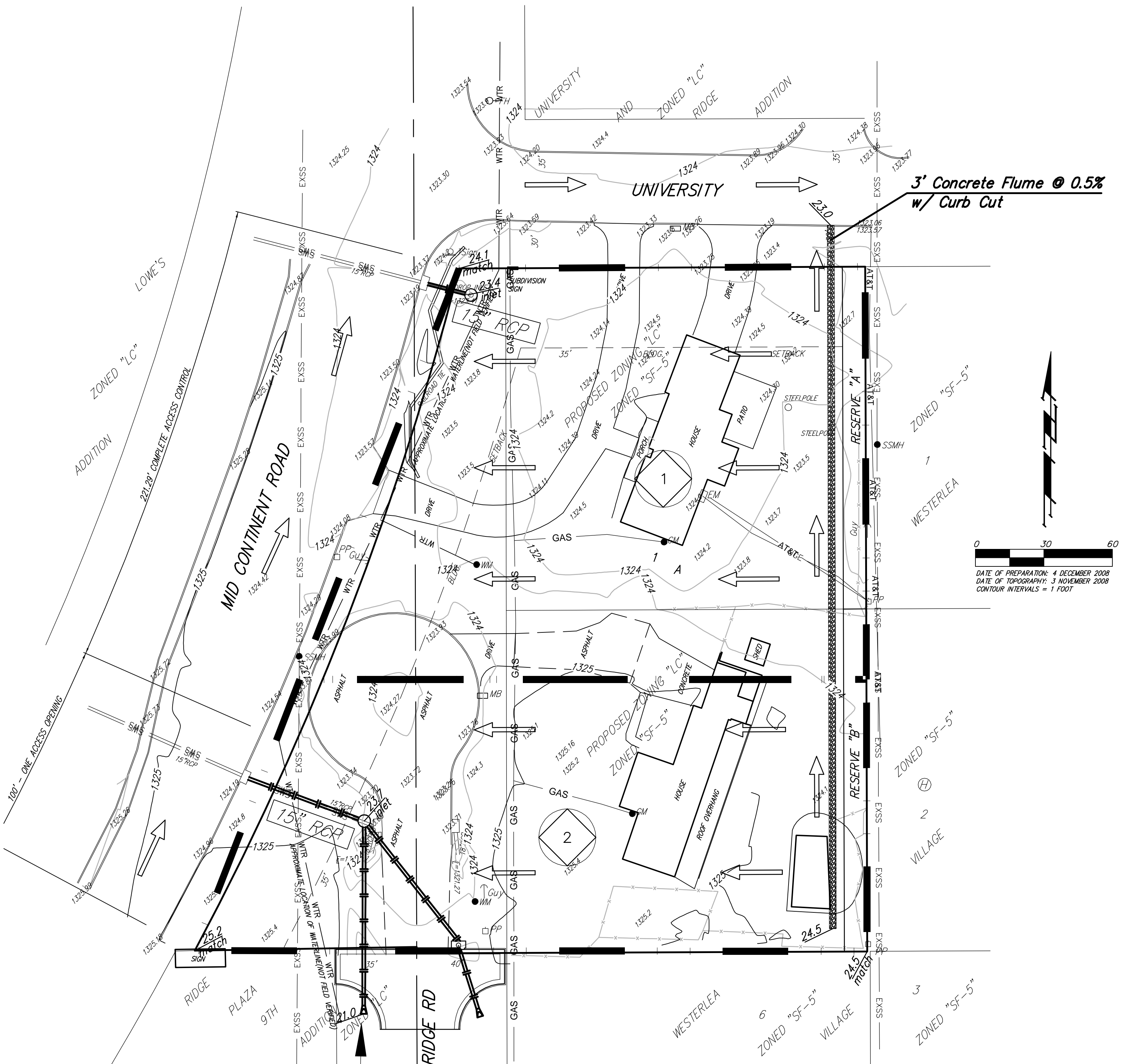
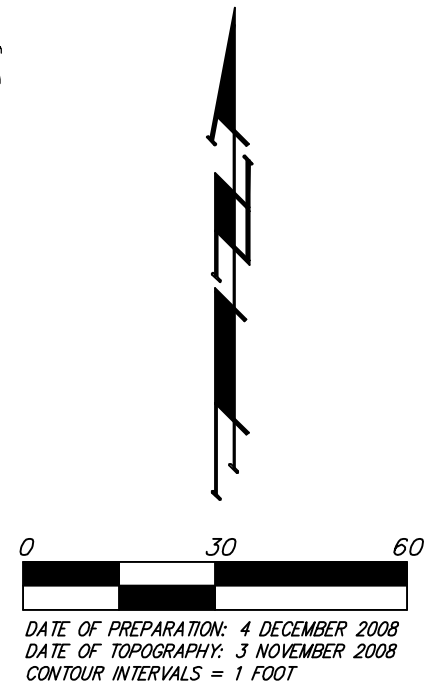


DRAINAGE PLAN
RIDGE 400 ADDITION
 WICHITA, SEDGWICK COUNTY, KANSAS



**3' Concrete Flume @ 0.5%
w/ Curb Cut**



Off-Site Drainage
 D.A. = 0.41 acres
 Tc = 15 min
 C = 0.40
 Q₂ = 0.63 cfs
 Q₁₀ = 0.84 cfs
 Q₁₀₀ = 1.2 cfs

Existing	2yr	10yr	100yr	Developed	2yr	10yr	100yr
Intensity	4.56	5.22	7.37	Intensity	4.56	5.22	7.37
Rational C	0.36	0.44	0.54	Rational C	0.68	0.73	0.8

Basin ID	Area acres	Existing Flowrates			Developed Flowrates		
		2-yr cfs	10-yr cfs	100-yr cfs	2-yr cfs	10-yr cfs	100-yr cfs
1	0.9	1.5	2.1	3.6	2.8	3.4	5.3
2	0.7	1.1	1.6	2.8	2.2	2.7	4.1
TOTAL	1.6	2.6	3.7	6.4	5.0	6.1	9.4

BENCHMARK:
 "□" CUT IN CURB SE CORNER OF
 UNIVERSITY AND RIDGE ROAD.
 ELEV. = 1324.08 NGVD29

NOTE: There is no FEMA SFHA on this property as of April 29, 2008, per FEMA FIRM Panel 345 of 700 for Sedgwick County, Kansas, effective February 2, 2007.

**DRAINAGE PLAN
 RIDGE 400 ADDITION**
 02 DECEMBER 2008

Baughman Company, P.A.
 315 Ellis St. Wichita, KS 67211 P 316-262-7271 F 316-262-0149
 ENGINEERING | SURVEYING | PLANNING | LANDSCAPE ARCHITECTURE

F:\HYDRO\Projects\Ridge 400 Addition\RIDGE400_drain_grade.dwg