

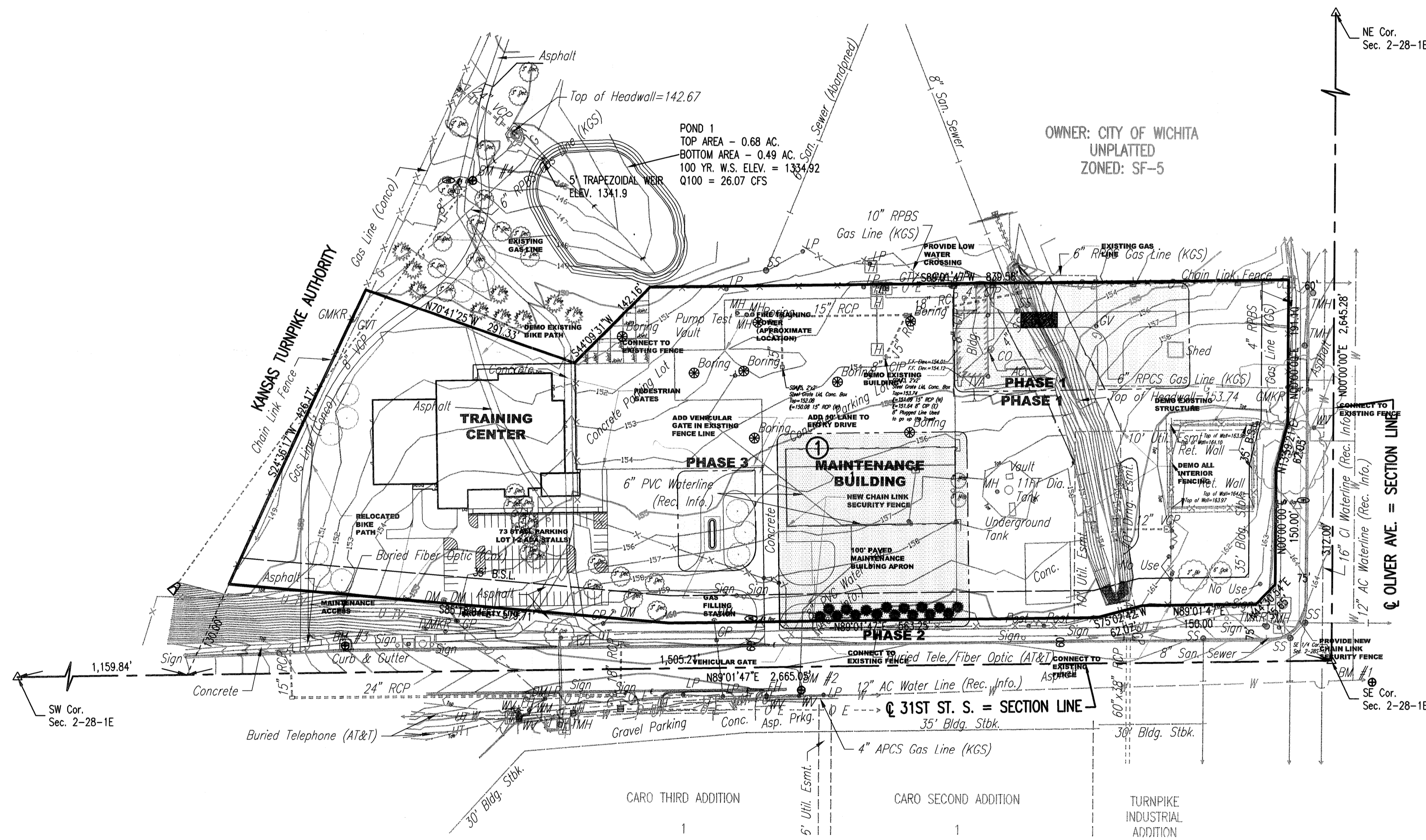
# WICHITA REGIONAL FIRE TRAINING ADDITION

## AN ADDITION TO WICHITA, SEDGWICK COUNTY, KANSAS

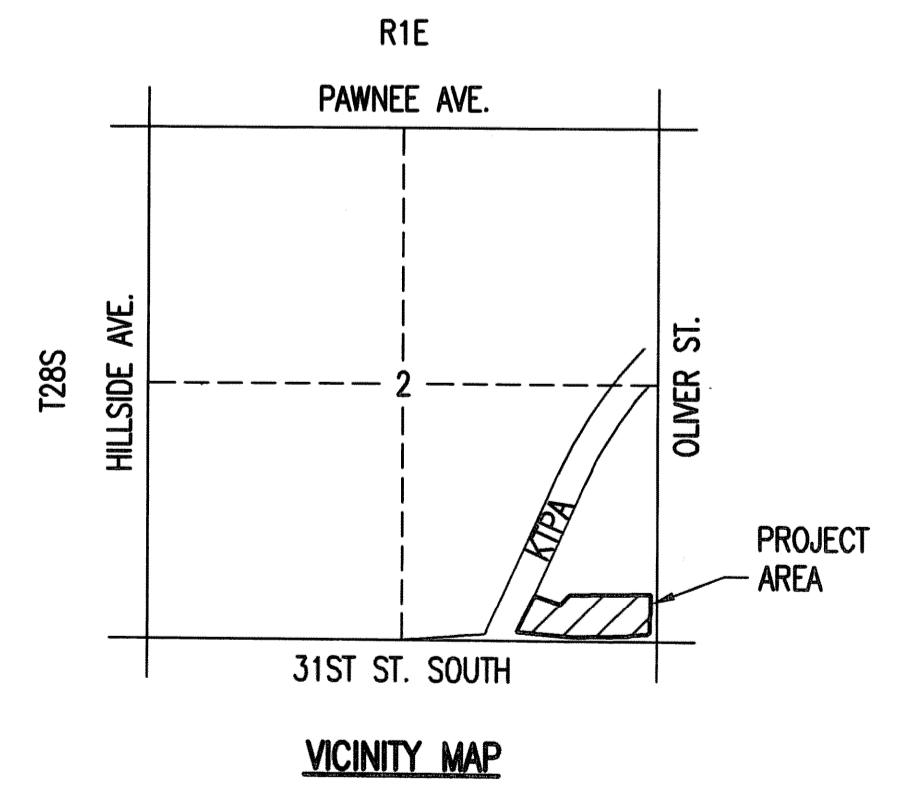
DATE OF PREPARATION: OCTOBER 28, 2008  
 DATE OF TOPOGRAPHIC SURVEY: JANUARY 2007  
 OWNER: CITY OF WICHITA  
 455 N. MAIN  
 WICHITA, KANSAS 67202  
 SUBDIVIDER: PROFESSIONAL ENGINEERING CONSULTANTS, P.A.  
 303 S. TOPEKA  
 WICHITA, KS 67202

SCALE: 1" = 100'  
 OCTOBER 7, 2008

• = 1/2" REBAR W/PEC CAP UNLESS OTHERWISE NOTED



OWNER: CITY OF WICHITA  
 UNPLATTED  
 ZONED: SF-5



DRAINAGE PLAN

Saved 11-06-2008 2:16:32 PM by SRS  
 P:\2008\108571\Drawings\08571.dwg  
 11/06/2008 2:16:32 PM  
 11/06/2008 2:16:32 PM  
 11/06/2008 2:16:32 PM