

# DRAINAGE PLAN LOT 10, BLOCK 2, AIRPORT INDUSTRIAL PARK ADDITION WICHITA, KANSAS

**BENCH MARK**

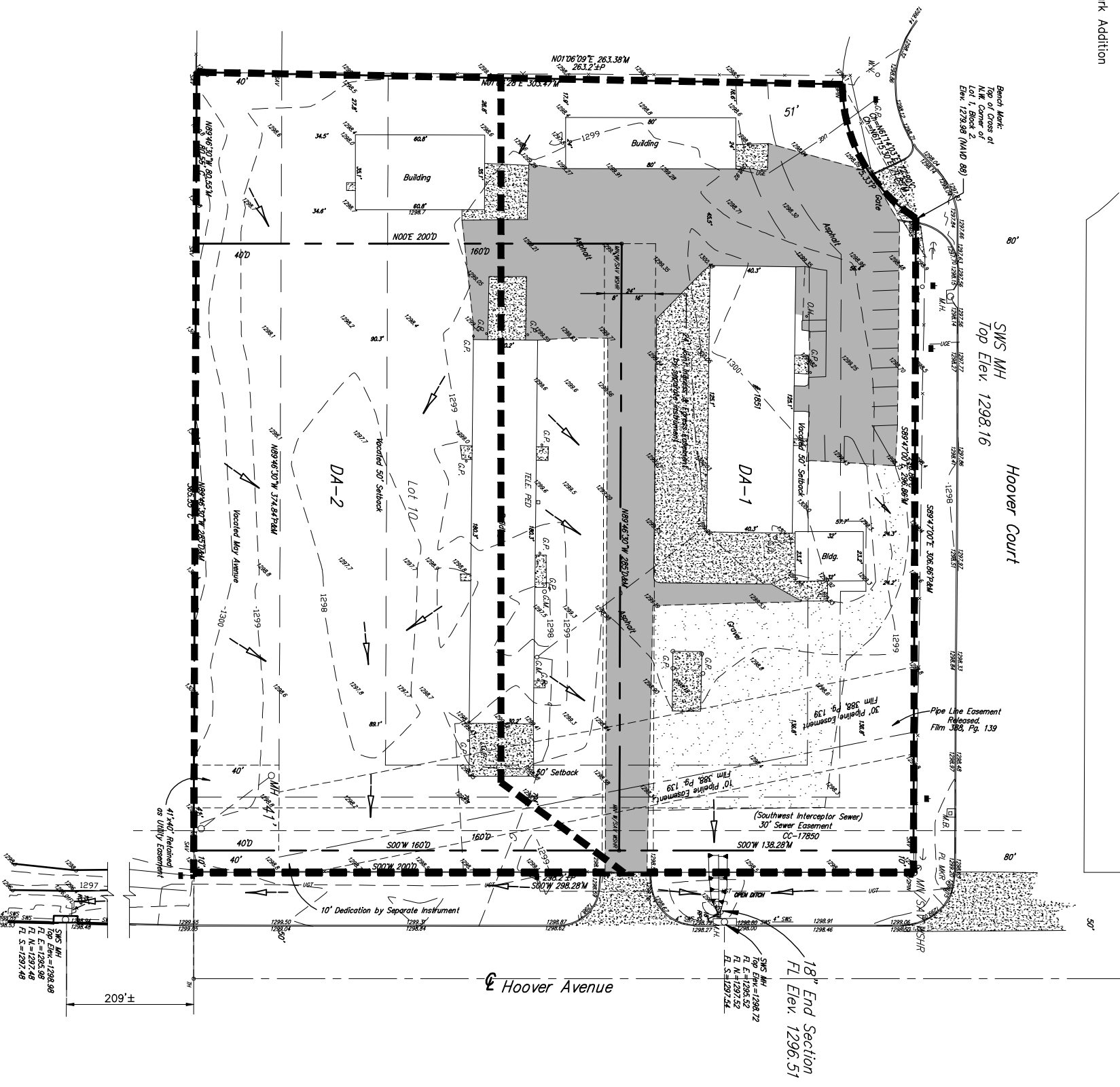
Top of Cross at N.W. Corner of Lot 1, Block 2, Airport Industrial Park Addition  
Elev. 1279.98 (NAVD 88)  
All Elevations = NAVD 88

Area #	Area	I <sub>100</sub>	Q <sub>s</sub>	Q <sub>100</sub>
DA-1	4.62	7.40	4.49	8.44
DA-2	1.26	4.62	3.73	6.99
<b>TOTAL</b>	<b>2.78</b>		<b>8.22</b>	<b>15.43</b>

**CALCULATION NOTES:**

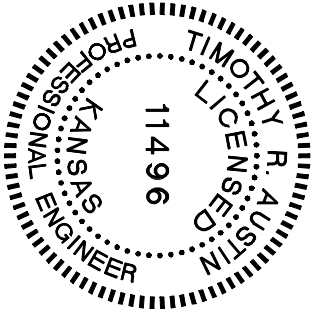
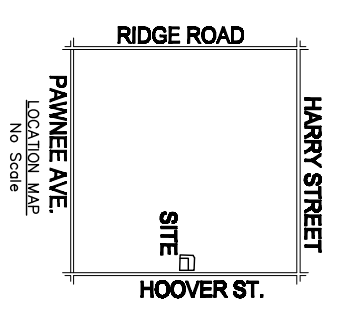
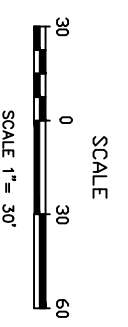
- Determination of Q<sub>s</sub> was made using the rational method.
- c's used were as follows:
 

Developed	0.64
100 yr frequency	0.75



**LEGEND**

- = Concrete Pavement
- = Catch Basin
- = Water Main
- = Sanitary Sewer
- = Storm Water Sewer
- = Under Ground Electric
- = Under Ground Telephone
- = Telephone Pedestal
- = Clean Out
- = Guy Anchor
- = Guard Post
- = High Line Pole
- = Mail Box
- = Observation Hole
- = Pipeline Marker
- = Power Pole
- = Sign
- = Manhole
- = M.H.



POE & ASSOCIATES, INC.  
CONSULTING ENGINEERS  
8940 E. Central, Suite 200 • Wichita, KS 67208-4242  
Phone 316.665-4114 • FAX 316.665-4444

Poe & Associates Proj. No. 1829-01600

Date of Preparation-12/02/2008

NO.	DATE	DESCRIPTION	BY