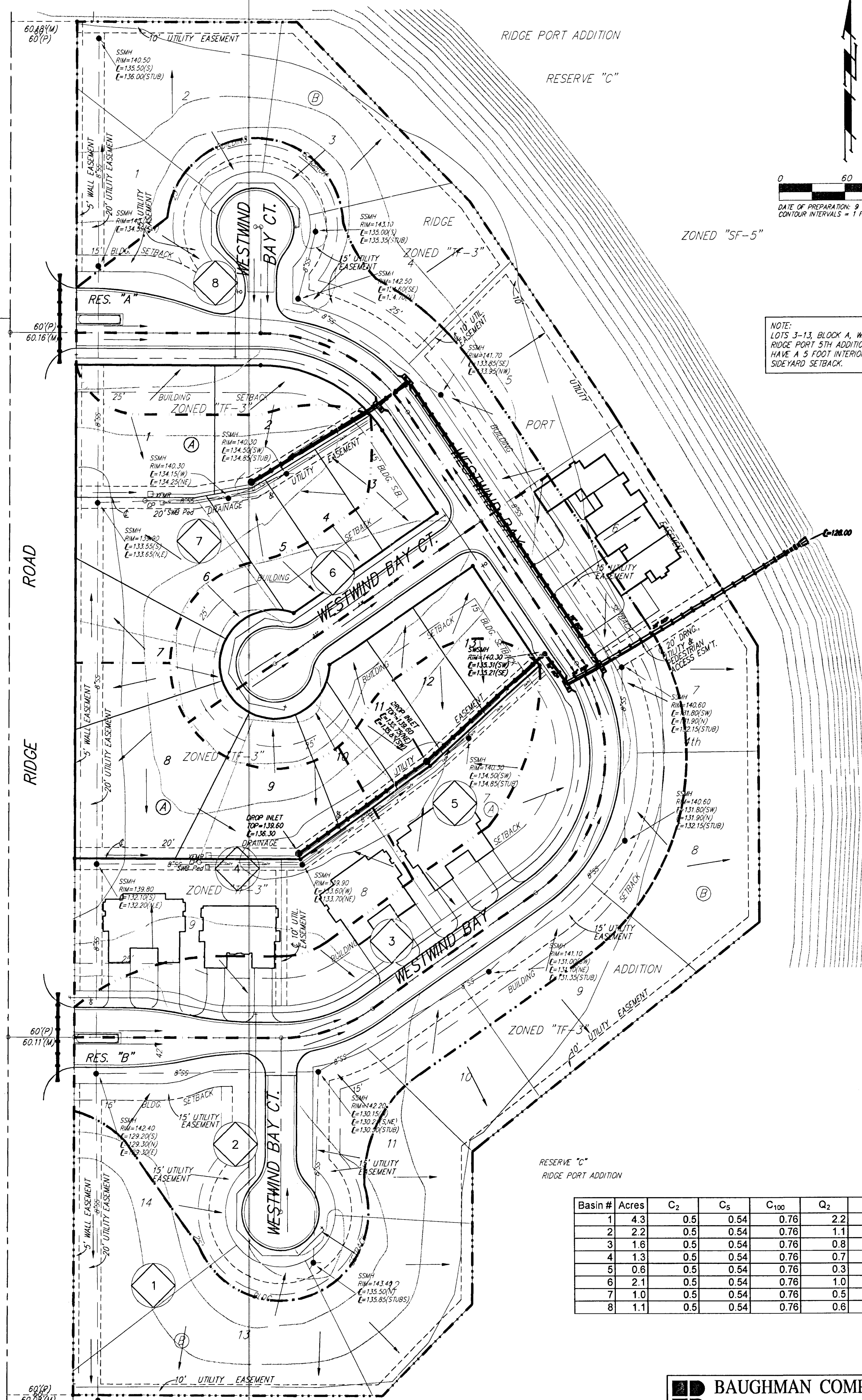


# DRAINAGE PLAN RIDGE PORT 5TH ADDITION WICHITA, SEDGWICK COUNTY, KANSAS

1  
RIDGE  
②  
PORT  
2  
COMMERCIAL  
W. 33RD N.  
RES. "B"  
RIDGE  
13  
PORT  
④  
12  
COMMERCIAL  
ZONED "L1"  
11  
ADDITION



NOTE:  
LOTS 3-13, BLOCK A, WITHIN  
RIDGE PORT 5TH ADDITION SHALL  
HAVE A 5 FOOT INTERIOR  
SIDEYARD SETBACK.

Basin #	Acres	C <sub>2</sub>	C <sub>5</sub>	C <sub>100</sub>	Q <sub>2</sub>	Q <sub>5</sub>	Q <sub>100</sub>
1	4.3	0.5	0.54	0.76	2.2	2.3	3.3
2	2.2	0.5	0.54	0.76	1.1	1.2	1.7
3	1.6	0.5	0.54	0.76	0.8	0.9	1.2
4	1.3	0.5	0.54	0.76	0.7	0.7	1.0
5	0.6	0.5	0.54	0.76	0.3	0.3	0.4
6	2.1	0.5	0.54	0.76	1.0	1.1	1.6
7	1.0	0.5	0.54	0.76	0.5	0.5	0.8
8	1.1	0.5	0.54	0.76	0.6	0.6	0.9

13 JUNE 2003