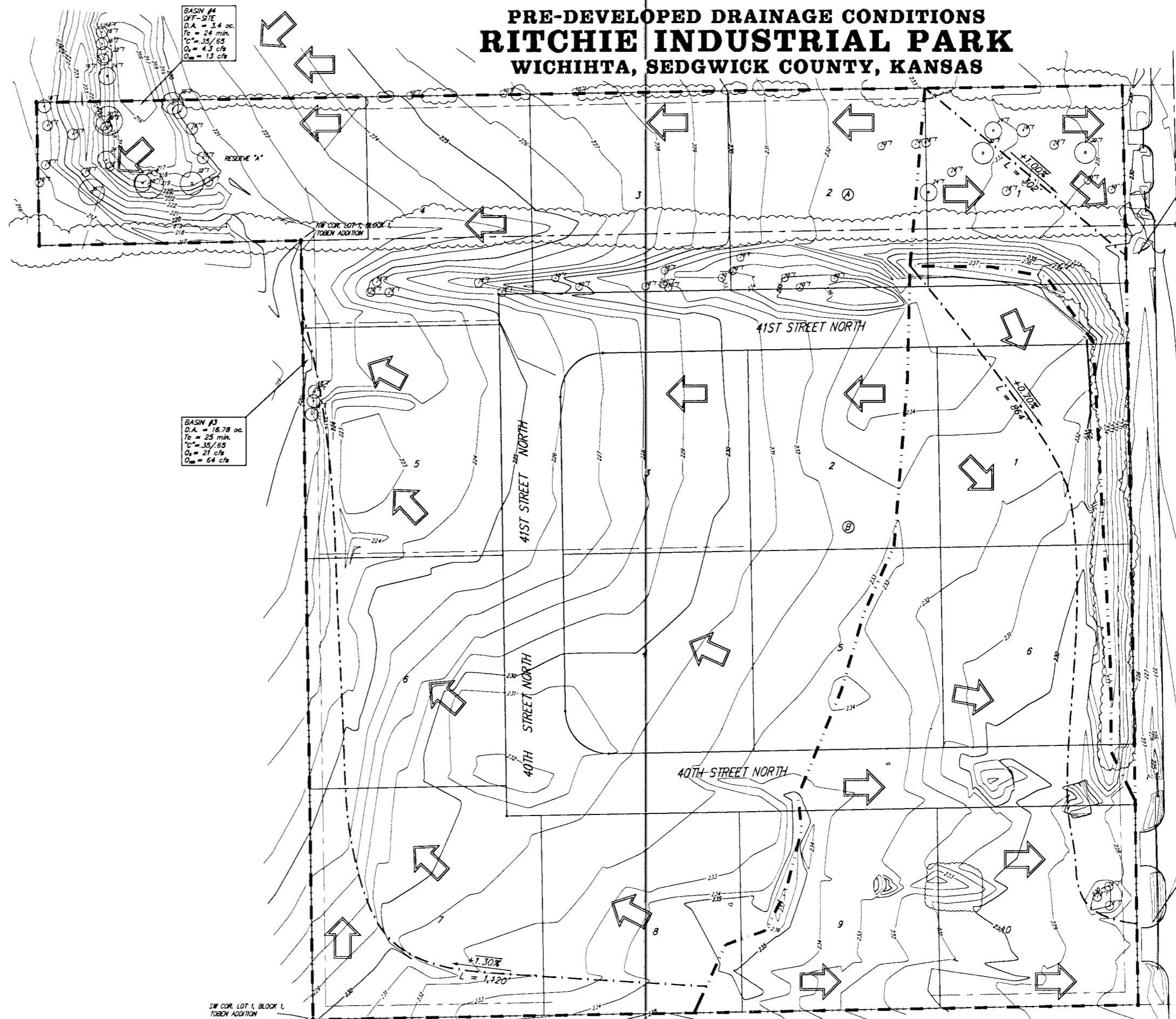


**PRE-DEVELOPED DRAINAGE CONDITIONS
RITCHIE INDUSTRIAL PARK
WICHITA, SEDGWICK COUNTY, KANSAS**



BASIN #4
OFF-SITE
D.A. = 3.4 ac
T_c = 24 min.
C_s = 35/65
Q_s = 4.3 cfs
Q_m = 1.3 cfs

BASIN #1
D.A. = 1.65 ac
T_c = 29 min.
C_s = 22/41
Q_s = 1.3 cfs
Q_m = 4.4 cfs

BASIN #3
D.A. = 16.78 ac
T_c = 25 min.
C_s = 35/65
Q_s = 21 cfs
Q_m = 6.4 cfs

BASIN #2
D.A. = 6.07 ac
T_c = 30 min.
C_s = 35/65
Q_s = 6.9 cfs
Q_m = 21 cfs

OWNER:
Ritchie Corporation
P.O. Box 7777
Wichita, KS 67277

LEGAL DESCRIPTION:
A report of Lot 1, Block 1, Toben Addition to
Wichita, Sedgwick County, Kansas, TOGETHER with
A tract of land in the E 1/4 of the NE 1/4 of Sec.
28, Twp. 26-S, R-2-E of the 6th P.M., Sedgwick
County, Kansas, described as follows: Beginning
at a point in the east line of said NE 1/4,
2,474.41 feet south of the NE corner of Lot 1 in
said NE 1/4; thence south 160.79 feet to the SE
corner of said NE 1/4; thence west on the south
line of said NE 1/4, a distance of 1,323.00 feet to
the SW corner of the E 1/4 of said NE 1/4; thence
north 165.161 feet; thence east 1,321.00 feet,
more or less, to the point of beginning.

BENCHMARK:
□ on catch basin southwest corner 39th Street
North & Webb.
Elev. = 227.69 City Datum (1415.09 NGVD29)