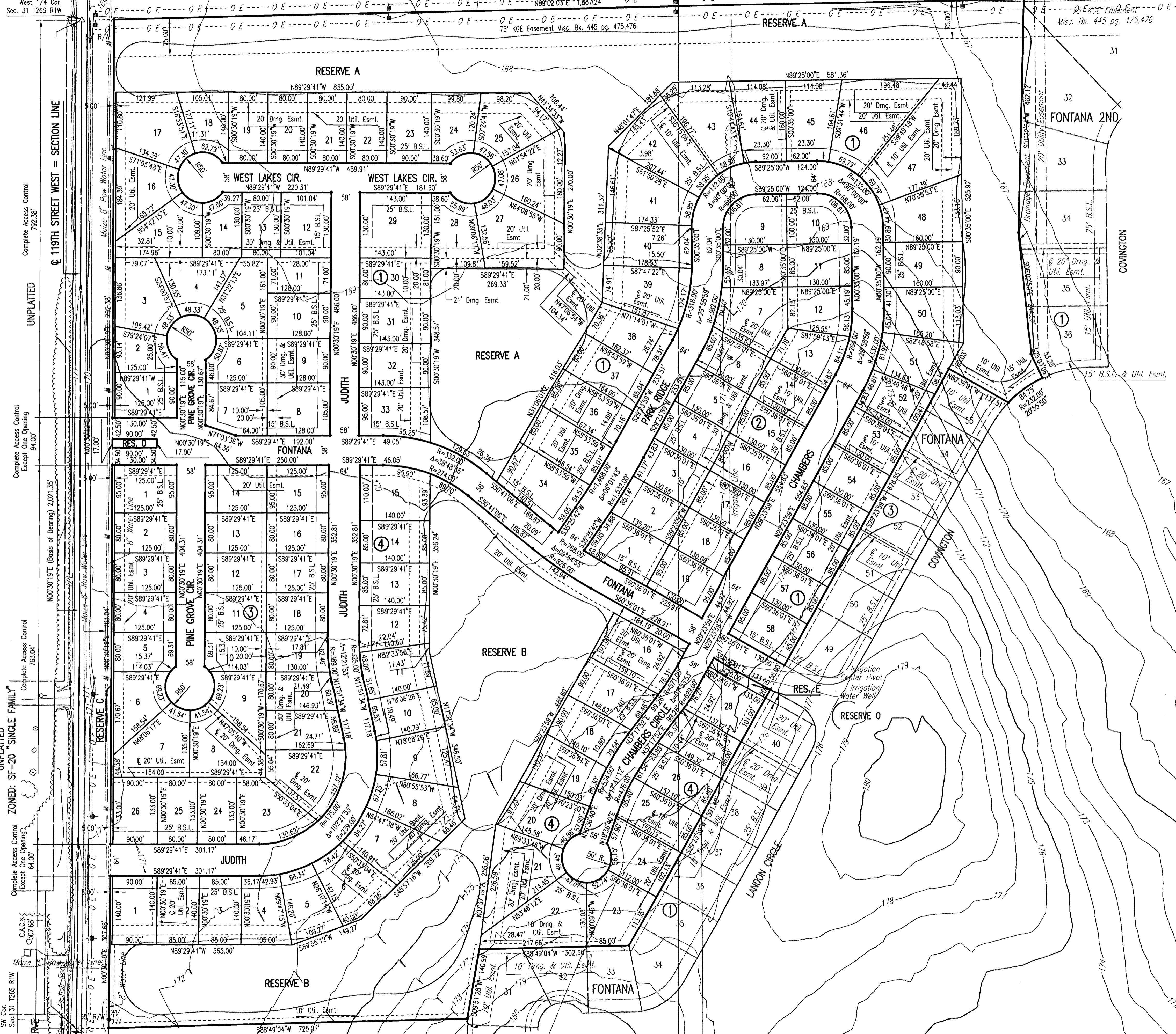


FONTANA 4TH

AN ADDITION TO WICHITA, SEDGWICK COUNTY, KANSAS



SCALE: 1" = 100'

- = 1/2" REBAR W/PEC CAP UNLESS OTHERWISE NOTED
- △ = SECTION CORNER

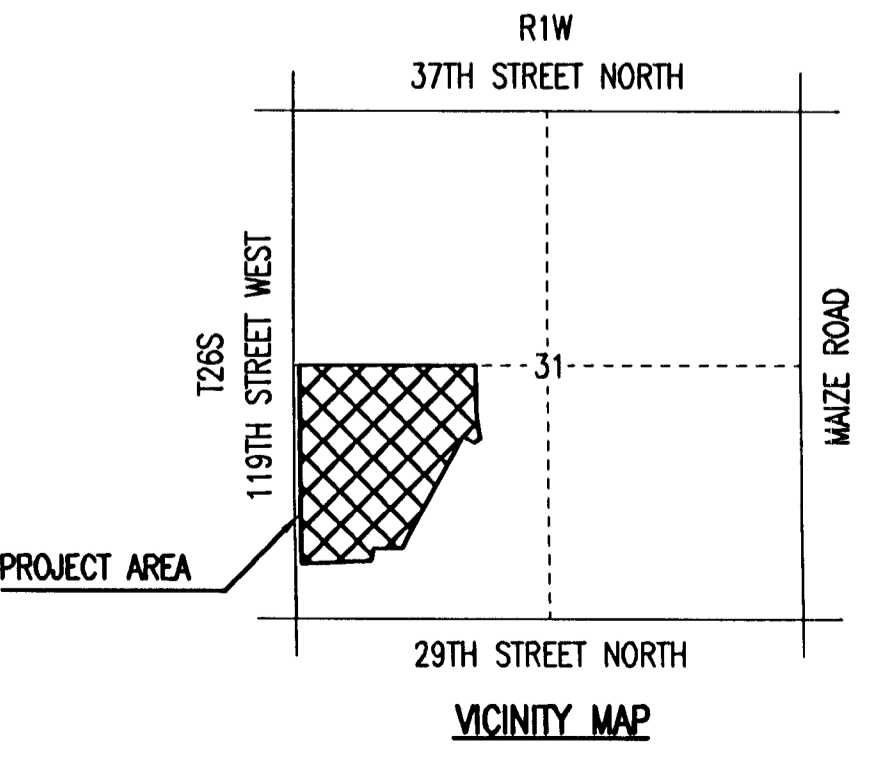
LEGEND

- DM Deadman
- Power Pole
- GM Gas Meter
- Telephone Box
- FH Fire Hydrant
- WV Water Valve
- WW Water Well
- Waterline
- Overhead Electric
- Fence
- Tree

BENCHMARKS

- BM#1
C.O.W. DISK STAMPED "NO STAMP" ±22.0' S. OF S. 1/4 COR.
ELEV. = 178.29 CITY DATUM
1365.69 N.G.V.D.
- BM#6
SET R.R. SPIKE IN SOUTH FACE OF SOUTH POLE OF 2 POLE ELECTRIC LINE STRUCTURE, 2ND STRUCTURE WEST OF CENTER SEC. 31, T26S, R1W.
ELEV. = 168.755 CITY DATUM
1356.155 N.G.V.D.
- BM#7
SET "T" POST IN PI DITCH BERM N-E, ±20' E. OF CENTER SEC. 31, T26S, R1W.
ELEV. = 168.93 CITY DATUM
1356.33 N.G.V.D.
- BM#8
SET "T" POST ±15' S. OF N.W. COR. SW1/4, SE 1/4, SEC. 31, T26S, R1W.
ELEV. = 169.43 CITY DATUM
1356.83 N.G.V.D.

DATE OF PREPARATION: JUNE 2008
 DATE OF TOPOGRAPHIC SURVEY: AUGUST 2005
 OWNER: SOCORA HOMES, INC.
 727 N. WACO, SUITE 400
 WICHITA, KANSAS 67203
 SUBDIVIDER: PROFESSIONAL ENGINEERING CONSULTANTS, P.A.
 303 S. TOPEKA
 WICHITA, KS 67202



SW Cor. Sec. 131, T26S, R1W
 West 1/4 Cor. Sec. 31, T26S, R1W
 UNPLATTED
 ZONED: SF-20 "SINGLE FAMILY"
 UNPLATTED
 Complete Access Control Except One Opening 792.38'
 Complete Access Control Except One Opening 94.00'
 Complete Access Control Except One Opening 763.04'
 Complete Access Control Except One Opening 64.00'
 CACX 07/68
 Make 8" Row Water Line
 06-30-2008 8:53:52 AM by AEE
 12004140071021194007-003 one-shape plot 2 of 2