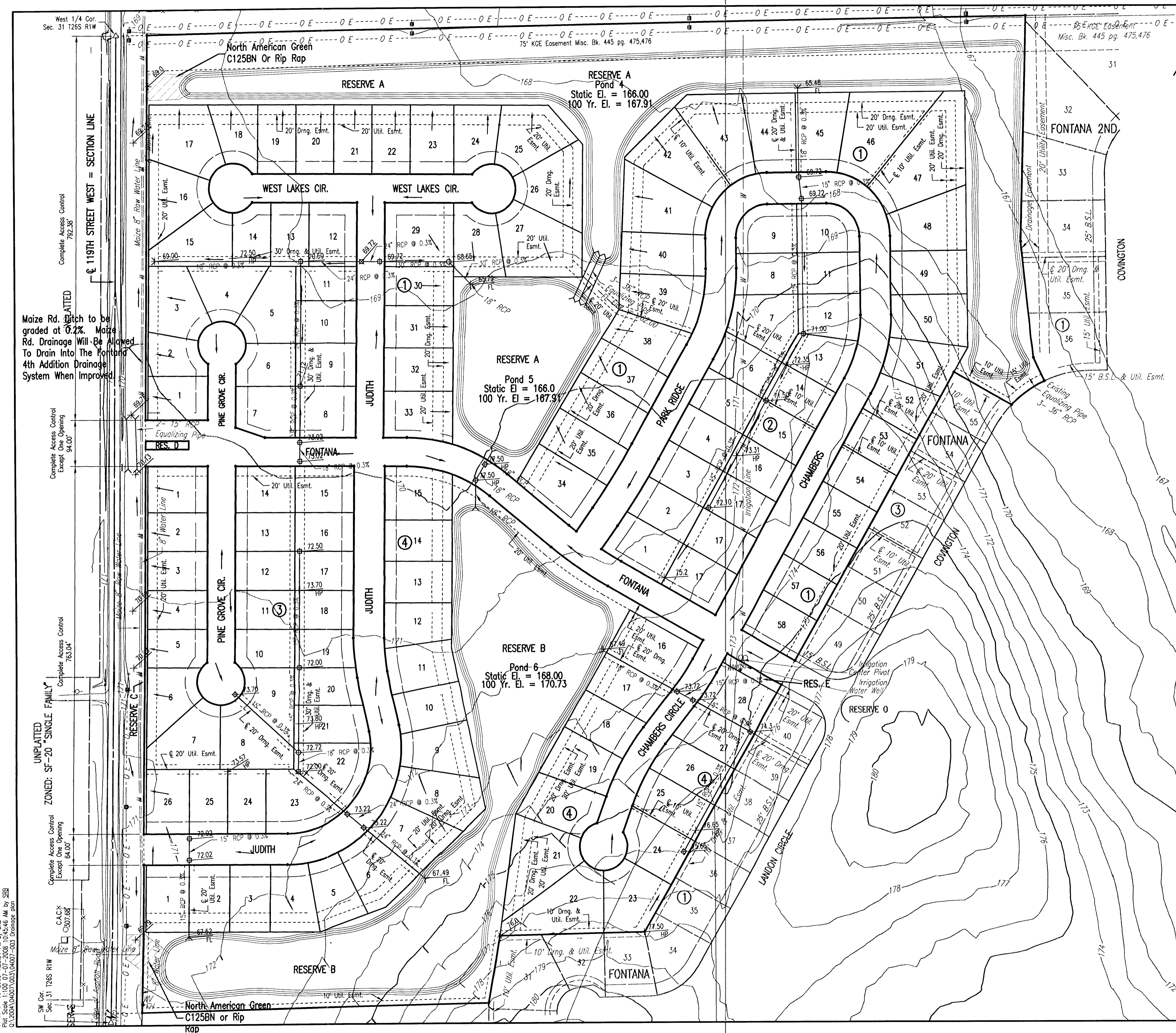


# FONTANA 4TH

AN ADDITION TO WICHITA, SEDGWICK COUNTY, KANSAS

## DRAINAGE PLAN



Maize Rd. Ditch to be graded at 0.2%. Maize Rd. Drainage Will Be Allowed To Drain Into The Fontana 4th Addition Drainage System When Improved.

SW Cor. Sec. 31 T26S R1W  
 Date: 07-06-2008 12:34:46 PM by SSB  
 Plot Scale: 1" = 100' 07-07-2008 10:45:46 AM by SSB  
 C:\2008\140071\001\140071-003\140071-003.dwg

UNPLATTED  
 ZONED: SF-20 "SINGLE FAMILY"  
 Complete Access Control Except One Opening 84.00'

Complete Access Control Except One Opening 94.00'

Complete Access Control Except One Opening 763.04'

Complete Access Control Except One Opening 94.00'

Complete Access Control Except One Opening 94.00'

Complete Access Control Except One Opening 94.00'

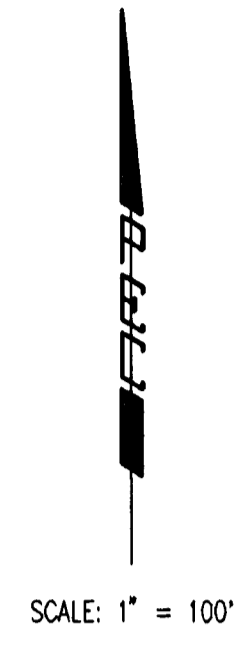
Complete Access Control Except One Opening 94.00'

Complete Access Control Except One Opening 94.00'

Complete Access Control Except One Opening 94.00'

Complete Access Control Except One Opening 94.00'

Complete Access Control Except One Opening 94.00'



### LEGEND

- DM Deadman
- Power Pole
- GM Gas Meter
- Telephone Box
- FH Fire Hydrant
- WV Water Valve
- WW Water Well
- Waterline
- Overhead Electric
- Fence
- Tree

### BENCHMARKS

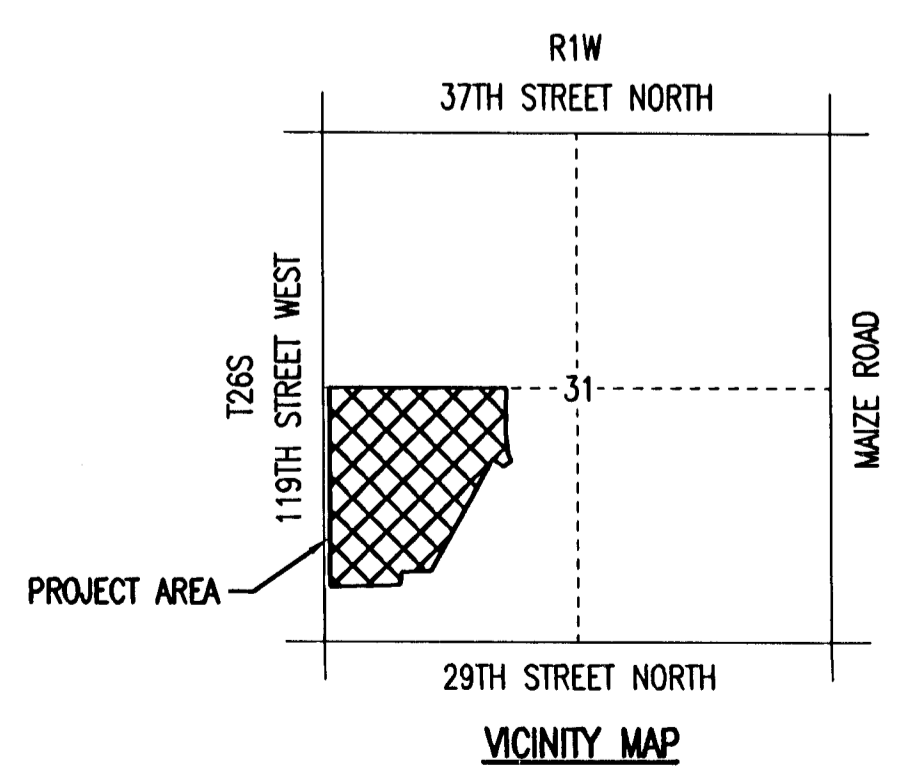
- BM#1  
C.O.W. DISK STAMPED "NO STAMP" ±22.0' S. OF S. 1/4 COR.  
ELEV. = 178.29 CITY DATUM  
1365.69 N.G.V.D.
- BM#6  
SET R.R. SPIKE IN SOUTH FACE OF SOUTH POLE OF 2 POLE  
ELECTRIC LINE STRUCTURE, 2ND STRUCTURE WEST OF CENTER SEC. 31, T26S, R1W.  
ELEV. = 168.755 CITY DATUM  
1356.155 N.G.V.D.
- BM#7  
SET "T" POST IN PI DITCH BERM N-E, ±20' E. OF CENTER SEC. 31, T26S, R1W.  
ELEV. = 168.93 CITY DATUM  
1356.33 N.G.V.D.
- BM#8  
SET "T" POST ±15' S. OF N.W. COR. SW1/4, SE 1/4, SEC. 31, T26S, R1W.  
ELEV. = 169.43 CITY DATUM  
1356.83 N.G.V.D.

Lot/Block	Min. Pad Elev.
Block 1 Lots 17-51	170.00
Block 4 Lots 1-22	172.75

DATE OF PREPARATION: JUNE 2008  
 DATE OF TOPOGRAPHIC SURVEY: AUGUST 2005

OWNER: SOCORA HOMES, INC.  
 727 N. WACO, SUITE 400  
 WICHITA, KANSAS 67203

SUBMITTER: PROFESSIONAL ENGINEERING CONSULTANTS, P.A.  
 303 S. TOPEKA  
 WICHITA, KS 67202



**Professional Engineering Consultants, P.A.**  
 303 S. TOPEKA • WICHITA, KANSAS 67202  
 316-262-2691 • FAX 316-262-3003