

# MID-CONTINENT AIRPORT 3RD ADDITION

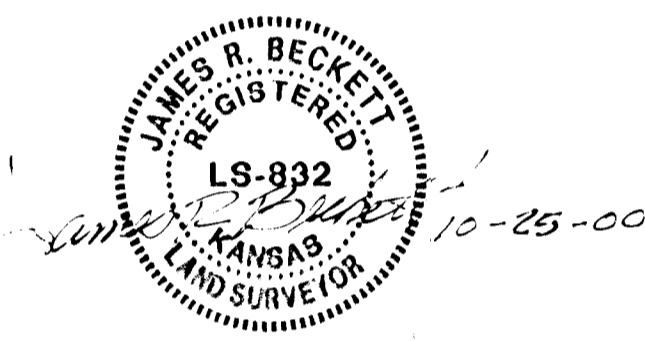
## TO WICHITA, SEDGWICK COUNTY, KANSAS

STATE OF KANSAS }  
 COUNTY OF SEDGWICK } SS

WE, PROFESSIONAL ENGINEERING CONSULTANTS, P.A., ENGINEERS AND SURVEYORS IN FORESAID STATE AND COUNTY, DO HEREBY CERTIFY THAT ON THIS 25 DAY OF OCTOBER, 2000, WE HAVE SURVEYED AND PLATED MID-CONTINENT AIRPORT 3RD ADDITION TO WICHITA, SEDGWICK COUNTY, KANSAS, INTO A LOT AND BLOCK, THE SAME BEING DESCRIBED AS FOLLOWS:

A TRACT OF LAND IN THE SOUTHEAST QUARTER OF SECTION 34, TOWNSHIP 27 SOUTH, RANGE 1 WEST AND THE NORTHEAST QUARTER OF SECTION 3, TOWNSHIP 28 SOUTH, RANGE 1 WEST OF THE SIXTH PRINCIPAL MERIDIAN, SEDGWICK COUNTY, KANSAS DESCRIBED AS FOLLOWS:  
 THE SOUTHEAST QUARTER OF SECTION 34, TOWNSHIP 27 SOUTH, RANGE 1 WEST OF THE 6TH P.M., SEDGWICK COUNTY, KANSAS, EXCEPT THE EAST 50 FEET FOR ROAD PURPOSES, TOGETHER WITH THE EAST 112 FEET OF THE NORTHWEST QUARTER OF THE NORTHEAST QUARTER, EXCEPT THE SOUTH 100 FEET THEREOF; SECTION 3, TOWNSHIP 28 SOUTH, RANGE 1 WEST, TOGETHER WITH THE NORTHEAST QUARTER OF THE NORTHEAST QUARTER OF SECTION 3, TOWNSHIP 28 SOUTH, RANGE 1 WEST, EXCEPT THE SOUTH 100 FEET THEREOF AND EXCEPT THE EAST 50 FEET FOR ROAD PURPOSES.

ALL PORTIONS OF PAWNEE LYING WITHIN THE ABOVE DESCRIBED TRACT ARE HEREBY VACATED AND REPLATED BY VIRTUE OF KSA 12-512(b) AMENDED.



JAMES R. BECKETT, R.L.S. NO. 832  
 PROFESSIONAL ENGINEERING CONSULTANTS, P.A.

KNOW ALL MEN BY THESE PRESENTS THAT WE, THE UNDERSIGNED PROPERTY OWNERS OF THE LAND AS ABOVE SET FORTH IN THE SURVEYOR'S CERTIFICATE, HAVE CAUSED THE LAND TO BE SURVEYED AND PLATED INTO A LOT AND BLOCK, THE SAME TO BE KNOWN AS MID-CONTINENT AIRPORT 3RD ADDITION TO WICHITA, SEDGWICK COUNTY, KANSAS.

EASEMENTS AS INDICATED FOR THE CONSTRUCTION AND MAINTENANCE OF PUBLIC UTILITIES ARE HEREBY GRANTED.

ALL ABUTTER'S RIGHT OF ACCESS TO AND FROM HOOVER ROAD OVER AND ACROSS THE EAST LINE OF BLOCK 1 ARE HEREBY GRANTED TO THE CITY OF WICHITA. PROVIDED HOWEVER THAT BLOCK 1 SHALL HAVE ACCESS TO HOOVER ROAD AT FIVE LOCATIONS AS SHOWN.

A DRAINAGE PLAN HAS BEEN APPROVED FOR THIS PLAT. ALL DRAINAGE EASEMENTS AND RIGHTS-OF-WAY SHALL REMAIN AT ESTABLISHED GRADES AND UNOBSTRUCTED TO ALLOW FOR THE CONVEYANCE OF STORM WATER, UNLESS MODIFIED WITH THE APPROVAL OF THE CITY ENGINEER.

OWNER: THE WICHITA AIRPORT AUTHORITY

\_\_\_\_\_, MAYOR  
 BOB KNIGHT

\_\_\_\_\_, CITY CLERK  
 PAT BURNETT

STATE OF KANSAS }  
 COUNTY OF SEDGWICK } SS

THIS INSTRUMENT WAS ACKNOWLEDGED BEFORE ME ON THIS \_\_\_\_\_ DAY OF \_\_\_\_\_, 2000, BY BOB KNIGHT, MAYOR AND PAT BURNETT, CITY CLERK, OF THE CITY OF WICHITA, A MUNICIPAL CORPORATION.

\_\_\_\_\_, NOTARY PUBLIC

MY APPOINTMENT EXPIRES: \_\_\_\_\_

THIS PLAT OF MID-CONTINENT AIRPORT 3RD ADDITION HAS BEEN SUBMITTED TO AND APPROVED BY THE WICHITA-SEDGWICK COUNTY METROPOLITAN AREA PLANNING COMMISSION, WICHITA, KANSAS.

DATED THIS \_\_\_\_\_ DAY OF \_\_\_\_\_, 2000.

WICHITA-SEDGWICK COUNTY METROPOLITAN AREA PLANNING COMMISSION

\_\_\_\_\_, CHAIRMAN  
 CHRISTOPHER S. CARRAHER

\_\_\_\_\_, SECRETARY  
 MARVIN S. KROUT

REVIEWED IN ACCORDANCE WITH K.S.A. 58-2005 ON THIS \_\_\_\_\_ DAY OF \_\_\_\_\_, 2000.

\_\_\_\_\_  
 TRICIA L. ROBELLO, LS #1246  
 DEPUTY COUNTY SURVEYOR  
 SEDGWICK COUNTY KANSAS

THIS PLAT IS APPROVED AND ALL DEDICATIONS SHOWN HEREON, IF ANY ARE ACCEPTED BY THE CITY COUNCIL OF THE CITY OF WICHITA, KANSAS, THIS \_\_\_\_\_ DAY OF \_\_\_\_\_, 2000.

\_\_\_\_\_, MAYOR  
 BOB KNIGHT

\_\_\_\_\_, CITY CLERK  
 PAT BURNETT

ENTERED ON TRANSFER RECORD THIS \_\_\_\_\_ DAY OF \_\_\_\_\_, 2000.

\_\_\_\_\_, COUNTY CLERK  
 JAMES ALFORD

THIS IS TO CERTIFY THAT THIS INSTRUMENT WAS FILED FOR RECORD IN THE REGISTER OF DEEDS OFFICE AT \_\_\_\_\_ M., ON THE \_\_\_\_\_ DAY OF \_\_\_\_\_, 2000.

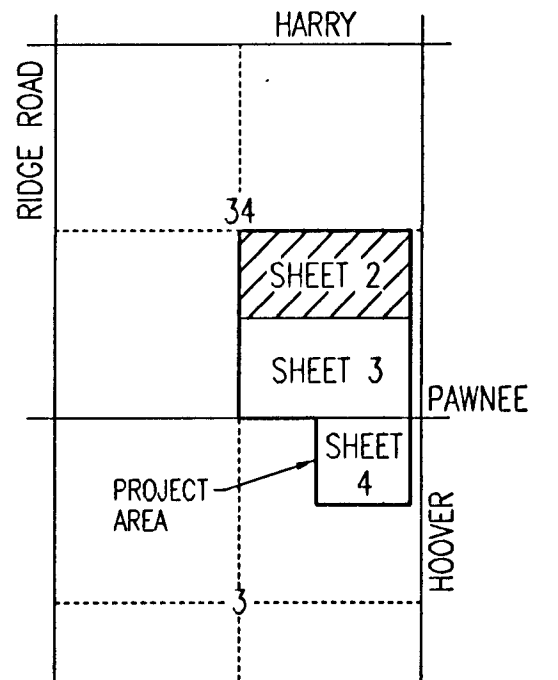
\_\_\_\_\_, REGISTER OF DEEDS  
 BILL WEEK

\_\_\_\_\_, DEPUTY  
 LINDA KIZZIRE

DSNR: GJM OPER: GJM SCALE: 1"=100.00  
 G:\1995\99042\Airport Plots\FINAL TEXT 3RD 10-25-2000 12:04:12 am

# MID-CONTINENT AIRPORT 3RD ADDITION TO WICHITA, SEDGWICK COUNTY, KANSAS

B.M. 56: City Disk 48' East and 5' South of the East 1/4  
Corner, Section 34, T27S, R1W, East side of Hoover  
Road, 1/2 mile South of Harry Street.  
Elev. = 1297.97 N.G.V.D.

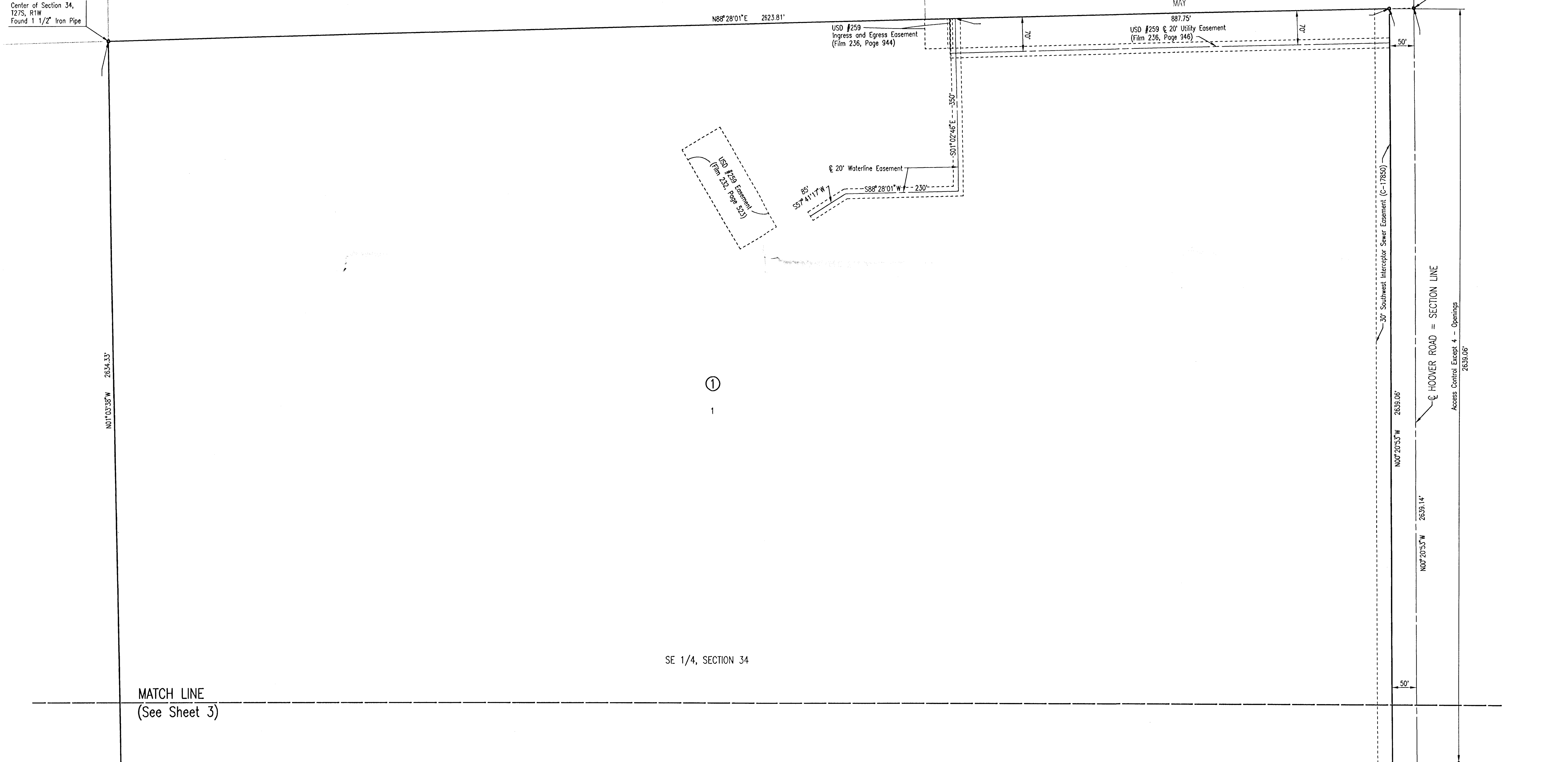


SCALE: 1" = 100'

• = 3/4" IRON PIPE W/PEC CAP UNLESS OTHERWISE NOTED

Center of Section 34,  
T27S, R1W  
Found 1 1/2" Iron Pipe

East 1/4 Corner,  
Section 34, T27S, R1W  
Found 3/4" Iron Pipe in Thimble



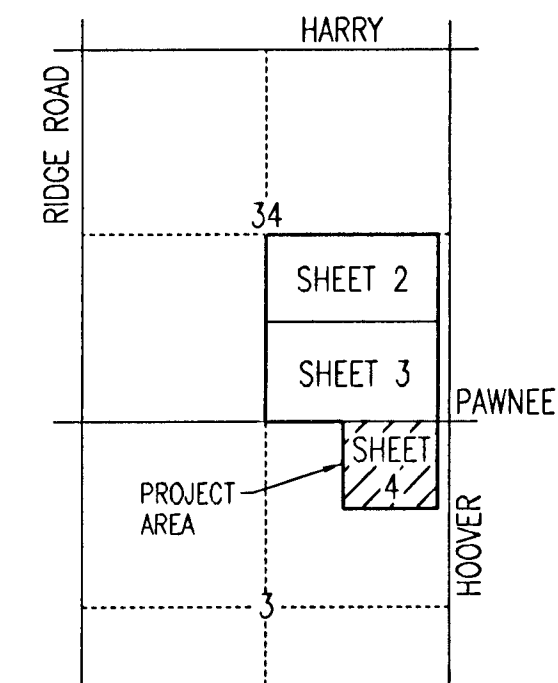
SE 1/4, SECTION 34

MATCH LINE  
(See Sheet 3)

USMC: GJM, OPRK: GJM, SCALE: 1"=100.00  
 Q:\1999\96642\Airport Plats\dwg\FINAL\_3RD-1 10-25-2000 01:20:47 pm



# MID-CONTINENT AIRPORT 3RD ADDITION TO WICHITA, SEDGWICK COUNTY, KANSAS

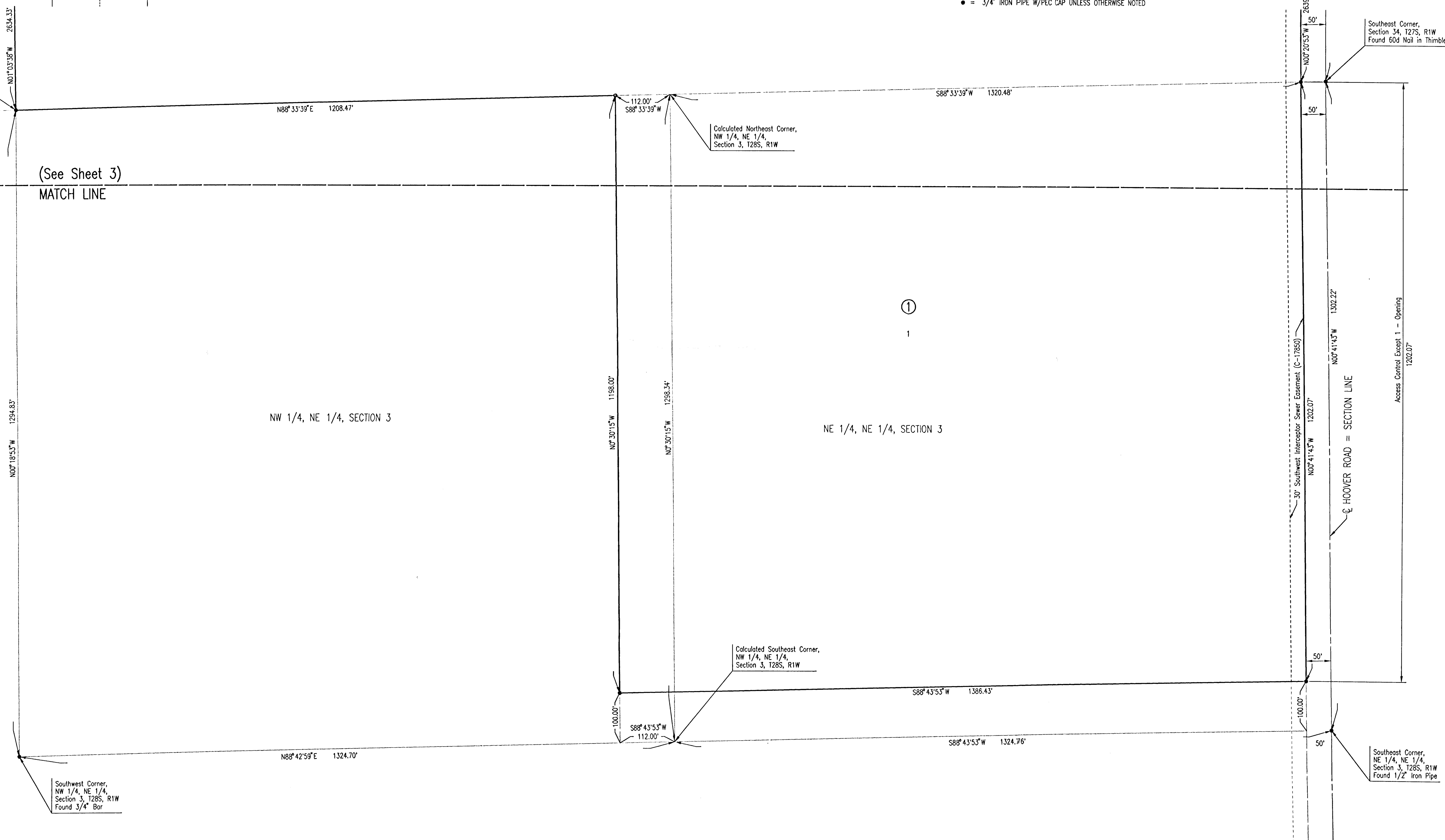


B.M. 6: Chiseled "d" at NE Corner 12" Concrete Retaining Wall at sign on NE Corner of East Parking Lot on North side of East entrance to Cessna, off Hoover Road.  
Elev. = 1298.155 N.G.V.D.

SCALE: 1" = 100'

● = 3/4" IRON PIPE W/PEC CAP UNLESS OTHERWISE NOTED

Calculated S 1/4 Corner, Section 34, T27S, R1W  
No Monument Found



(See Sheet 3)  
MATCH LINE

NW 1/4, NE 1/4, SECTION 3

NE 1/4, NE 1/4, SECTION 3

Southeast Corner, Section 34, T27S, R1W  
Found 60d Nail in Thimble

Calculated Northeast Corner, NW 1/4, NE 1/4, Section 3, T28S, R1W

Calculated Southeast Corner, NW 1/4, NE 1/4, Section 3, T28S, R1W

Southwest Corner, NW 1/4, NE 1/4, Section 3, T28S, R1W  
Found 3/4" Bar

Southeast Corner, NE 1/4, NE 1/4, Section 3, T28S, R1W  
Found 1/2" Iron Pipe

DSNR\_GLM\_OPER\_GLM\_SCALE: 1=100.00  
Q:\1999\99642\Airport\_Plans\dwg\FINAL\_3RD-3\_10-25-2000\_11:46:30.dwg