

MID-CONTINENT AIRPORT 2ND ADDITION TO WICHITA, SEDGWICK COUNTY, KANSAS

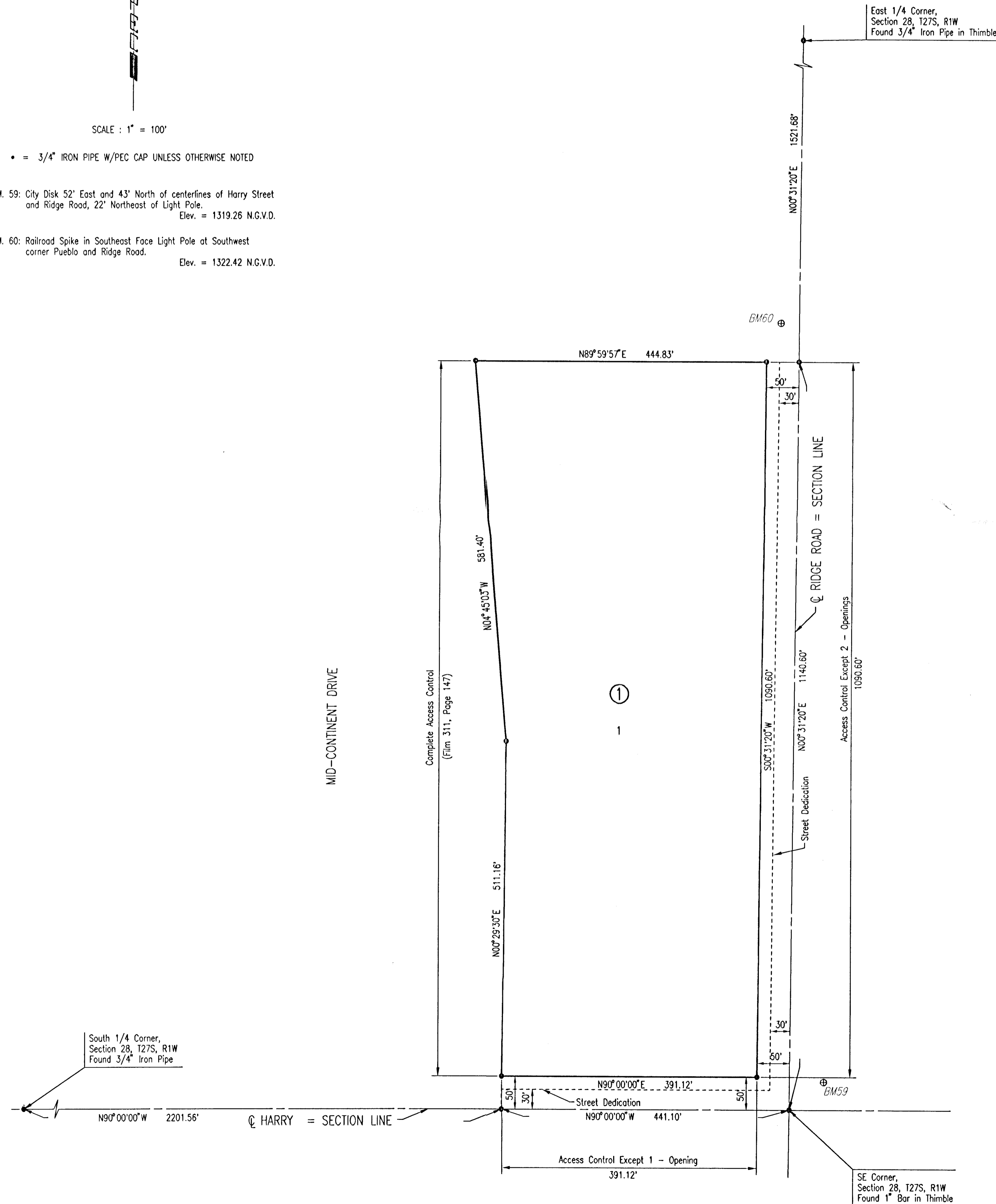


SCALE : 1" = 100'

• = 3/4" IRON PIPE W/PEC CAP UNLESS OTHERWISE NOTED

B.M. 59: City Disk 52" East and 43' North of centerlines of Harry Street and Ridge Road, 22' Northeast of Light Pole. Elev. = 1319.26 N.G.V.D.

B.M. 60: Railroad Spike in Southeast Face Light Pole at Southwest corner Pueblo and Ridge Road. Elev. = 1322.42 N.G.V.D.



STATE OF KANSAS }
COUNTY OF SEDGWICK } SS

WE, PROFESSIONAL ENGINEERING CONSULTANTS, P.A., ENGINEERS AND SURVEYORS IN AFORESAID STATE AND COUNTY, DO HEREBY CERTIFY THAT ON THIS 25TH DAY OF OCTOBER, 2000, WE HAVE SURVEYED AND PLATTED MID-CONTINENT AIRPORT 2ND ADDITION TO WICHITA, SEDGWICK COUNTY, KANSAS, INTO A LOT AND BLOCK AND STREET, THE SAME BEING DESCRIBED AS FOLLOWS:

THE SOUTH 1140.60 FEET OF THE EAST HALF OF THE SOUTHEAST QUARTER OF SECTION 28, TOWNSHIP 27 SOUTH, RANGE 1 WEST OF THE 6TH P.M., SEDGWICK COUNTY, KANSAS, EXCEPT THE WEST 500 FEET THEREOF AND ALSO EXCEPT THAT PART DEDICATED FOR HIGHWAY RIGHT-OF-WAY FOUND ON FILM 311, PAGE 147, AND ALSO EXCEPT THE SOUTH 30 FEET AND THE EAST 30 FEET FOR ROAD RIGHT-OF-WAY. MORE PARTICULARLY DESCRIBED AS:
BEGINNING AT THE SOUTHEAST CORNER OF SECTION 28, TOWNSHIP 27 SOUTH, RANGE 1 WEST OF THE 6TH P.M.; THENCE BEARING N90°00'00"W ALONG THE SOUTH LINE OF SAID SECTION 28 A DISTANCE OF 441.10 FEET; THENCE BEARING N07°29'30"E A DISTANCE OF 581.40 FEET; THENCE BEARING N04°45'00"W A DISTANCE OF 581.40 FEET TO THE NORTH LINE OF THE SOUTH 1140.60 FEET OF SAID SOUTHEAST QUARTER; THENCE BEARING N89°59'57"E ALONG THE NORTH LINE OF THE SOUTH 1140.60 FEET A DISTANCE OF 494.83 FEET TO THE EAST LINE OF SAID SECTION 28; THENCE BEARING S0°51'20"W ALONG THE EAST LINE OF SAID SECTION 28 A DISTANCE OF 1140.60 FEET TO THE POINT OF BEGINNING; EXCEPT THE EAST 30 FEET AND THE SOUTH 30 FEET THEREOF.

THIS PLAT OF MID-CONTINENT AIRPORT 2ND ADDITION HAS BEEN SUBMITTED TO AND APPROVED BY THE WICHITA-SEDGWICK COUNTY METROPOLITAN AREA PLANNING COMMISSION, WICHITA, KANSAS.

DATED THIS _____ DAY OF _____, 2000.

WICHITA-SEDGWICK COUNTY METROPOLITAN AREA PLANNING COMMISSION

CHRISTOPHER S. CARRAHER, CHAIRMAN

MARVIN S. KROUT, SECRETARY

REVIEWED IN ACCORDANCE WITH K.S.A. 58-2005 ON THIS _____ DAY OF _____, 2000.

TRICIA L. ROBELLO, LS #1246
DEPUTY COUNTY SURVEYOR
SEDGWICK COUNTY KANSAS

THIS PLAT IS APPROVED AND ALL DEDICATIONS SHOWN HEREON, IF ANY ARE ACCEPTED BY THE CITY COUNCIL OF THE CITY OF WICHITA, KANSAS, THIS _____ DAY OF _____, 2000.

BOB KNIGHT, MAYOR

PAT BURNETT, CITY CLERK

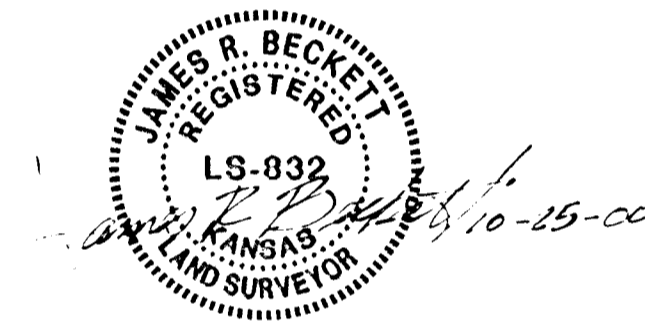
ENTERED ON TRANSFER RECORD THIS _____ DAY OF _____, 2000.

JAMES ALFORD, COUNTY CLERK

THIS IS TO CERTIFY THAT THIS INSTRUMENT WAS FILED FOR RECORD IN THE REGISTER OF DEEDS OFFICE AT _____ M., ON THE _____ DAY OF _____, 2000.

BILL MEEK, REGISTER OF DEEDS

LINDA KIZZIRE, DEPUTY



JAMES R. BECKETT, R.L.S. NO. 832
PROFESSIONAL ENGINEERING CONSULTANTS, P.A.

KNOW ALL MEN BY THESE PRESENTS THAT WE, THE UNDERSIGNED PROPERTY OWNERS OF THE LAND AS ABOVE SET FORTH IN THE SURVEYOR'S CERTIFICATE, HAVE CAUSED THE LAND TO BE SURVEYED AND PLATTED INTO A LOT AND BLOCK AND STREET, THE SAME TO BE KNOWN AS MID-CONTINENT AIRPORT 2ND ADDITION TO WICHITA, SEDGWICK COUNTY, KANSAS.

THE STREETS ARE HEREBY DEDICATED TO AND FOR THE USE OF THE PUBLIC.

ALL ADJUTERS' RIGHT OF ACCESS TO AND FROM RIDGE ROAD AND HARRY OVER AND ACROSS THE EAST AND SOUTH LINES OF BLOCK 1 ARE HEREBY GRANTED TO THE CITY OF WICHITA. PROVIDED HOWEVER THAT BLOCK 1 SHALL HAVE ACCESS TO RIDGE ROAD AT TWO LOCATIONS AND ACCESS TO HARRY AT ONE LOCATION AS SHOWN.

A DRAINAGE PLAN HAS BEEN APPROVED FOR THIS PLAT. ALL DRAINAGE EASEMENTS AND RIGHTS-OF-WAY SHALL REMAIN AT ESTABLISHED GRADES AND UNOBSTRUCTED TO ALLOW FOR THE CONVEYANCE OF STORM WATER, UNLESS MODIFIED WITH THE APPROVAL OF THE CITY ENGINEER.

OWNER: THE WICHITA AIRPORT AUTHORITY

BOB KNIGHT, MAYOR

PAT BURNETT, CITY CLERK

STATE OF KANSAS }
COUNTY OF SEDGWICK } SS

THIS INSTRUMENT WAS ACKNOWLEDGED BEFORE ME ON THIS _____ DAY OF _____, 2000, BY BOB KNIGHT, MAYOR AND PAT BURNETT, CITY CLERK, OF THE CITY OF WICHITA, A MUNICIPAL CORPORATION.

_____, NOTARY PUBLIC

MY APPOINTMENT EXPIRES: _____

MID CONTINENT AIRPORT 2ND ADDITION TO WICHITA, SEDGWICK COUNTY, KANSAS

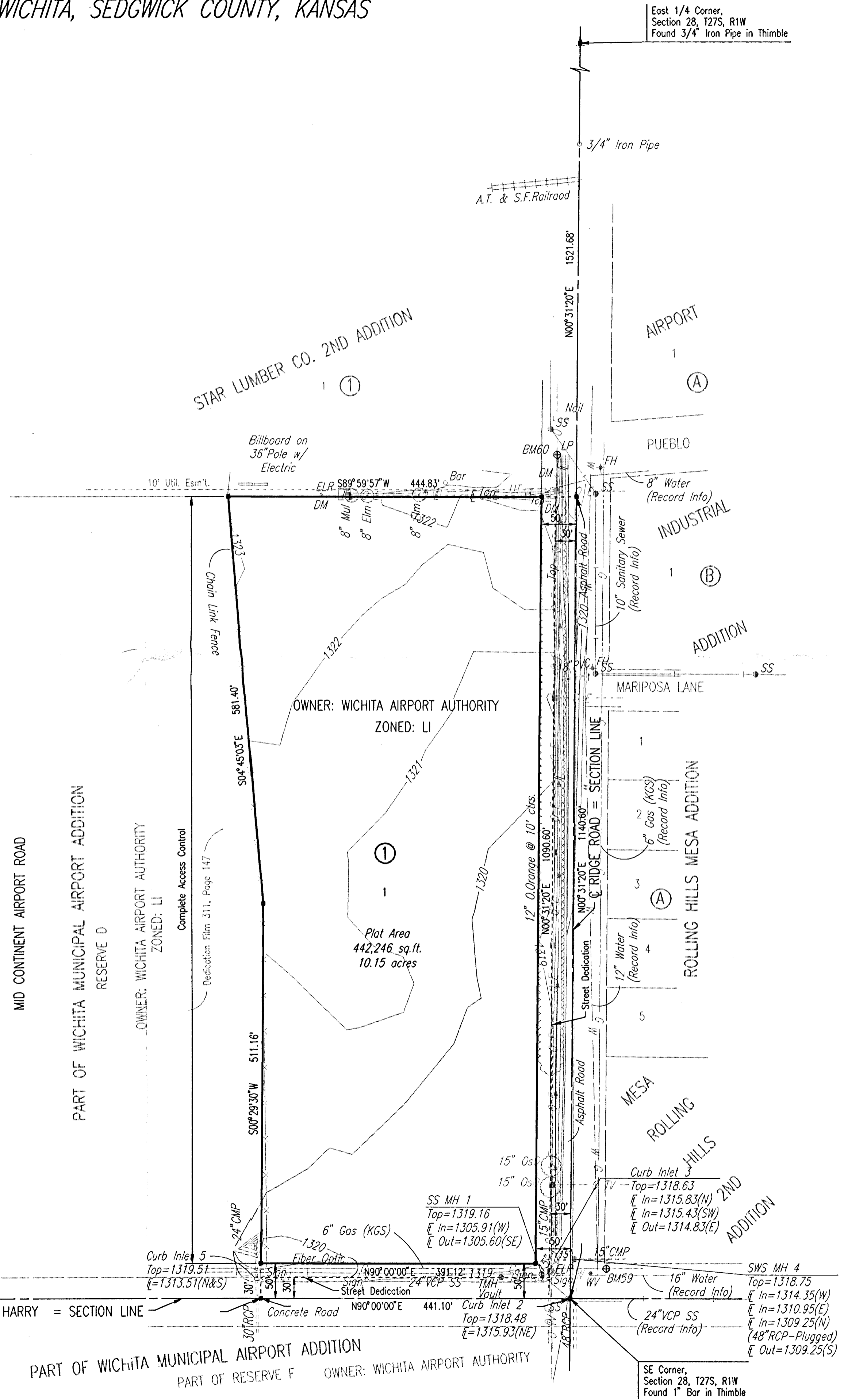
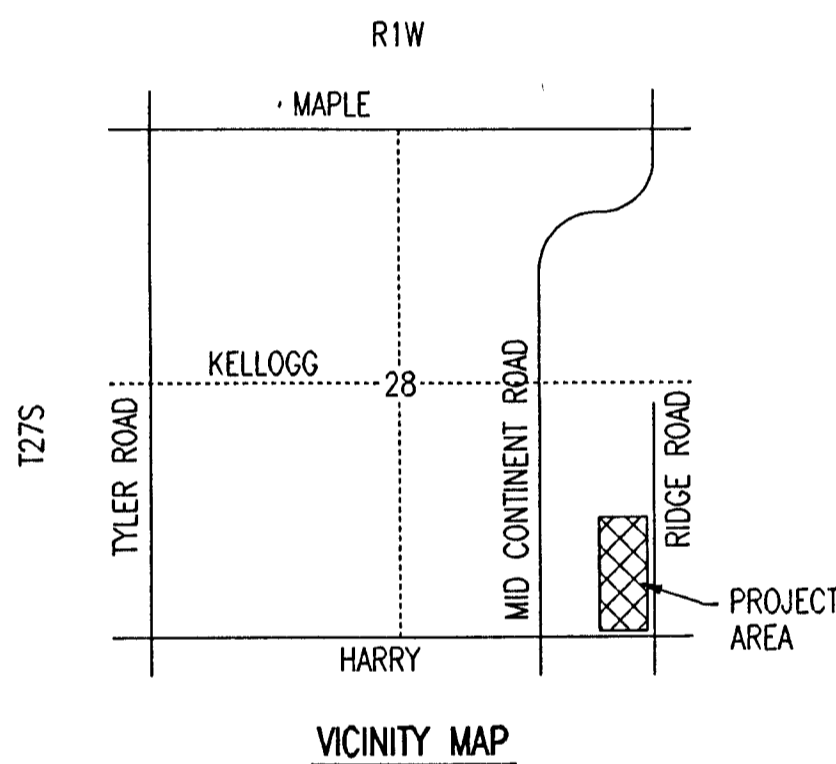


SCALE: 1" = 100'

• = 3/4" IRON PIPE W/PEC CAP UNLESS OTHERWISE NOTED

B.M. 59: City Disk 52' East and 43' North of centerlines of Harry Street and Ridge Road, 22' Northeast of Light Pole. Elev. = 1319.26 N.G.V.D.

B.M. 60: Railroad Spike in Southeast Face Light Pole at Southwest corner Pueblo and Ridge Road. Elev. = 1322.42 N.G.V.D.



STATE OF KANSAS }
COUNTY OF SEDGWICK } SS

WE, PROFESSIONAL ENGINEERING CONSULTANTS, P.A., ENGINEERS AND SURVEYORS IN AFORESAID STATE AND COUNTY, DO HEREBY CERTIFY THAT ON THIS _____ DAY OF _____, 2000, WE HAVE SURVEYED AND PLATTED MID CONTINENT AIRPORT 2ND ADDITION TO WICHITA, SEDGWICK COUNTY, KANSAS, INTO A LOT AND BLOCK AND STREET, THE SAME BEING DESCRIBED AS FOLLOWS:

THE SOUTH 1140.60 FEET OF THE EAST HALF OF THE SOUTHEAST QUARTER OF SECTION 28, TOWNSHIP 27 SOUTH, RANGE 1 WEST OF THE 6TH P.M., SEDGWICK COUNTY, KANSAS, EXCEPT THE WEST 500 FEET THEREOF AND ALSO EXCEPT THAT PART DEDICATED FOR HIGHWAY RIGHT-OF-WAY FOUND ON FILM 311, PAGE 147, AND ALSO EXCEPT THE SOUTH 30 FEET AND THE EAST 30 FEET FOR ROAD RIGHT-OF-WAY, MORE PARTICULARLY DESCRIBED AS: BEGINNING AT THE SOUTHEAST CORNER OF SECTION 28, TOWNSHIP 27 SOUTH, RANGE 1 WEST OF THE 6TH P.M.; THENCE BEARING N90°00'00\"/>

THIS PLAT OF MID CONTINENT AIRPORT 2ND ADDITION HAS BEEN SUBMITTED TO AND APPROVED BY THE WICHITA-SEDGWICK COUNTY METROPOLITAN AREA PLANNING COMMISSION, WICHITA, KANSAS.

DATED THIS _____ DAY OF _____, 2000.

WICHITA-SEDGWICK COUNTY METROPOLITAN AREA PLANNING COMMISSION

BY: _____, CHAIRMAN
FRANCIS M. GAROFALO

BY: _____, SECRETARY
MARVIN S. KROUT

REVIEWED IN ACCORDANCE WITH K.S.A. 58-2005 ON THIS _____ DAY OF _____, 2000.

TRICIA L. ROBELLO, LS #1246
DEPUTY COUNTY SURVEYOR
SEDGWICK COUNTY KANSAS

THIS PLAT IS APPROVED AND ALL DEDICATIONS SHOWN HEREON, IF ANY ARE ACCEPTED BY THE CITY COUNCIL OF THE CITY OF WICHITA, KANSAS, THIS _____ DAY OF _____, 2000.

BOB KNIGHT, MAYOR

PAT BURNETT, CITY CLERK

ENTERED ON TRANSFER RECORD THIS _____ DAY OF _____, 2000.

JAMES ALFORD, COUNTY CLERK

THIS IS TO CERTIFY THAT THIS INSTRUMENT WAS FILED FOR RECORD IN THE REGISTER OF DEEDS OFFICE AT _____ M., ON THE _____ DAY OF _____, 2000.

BILL MEEK, REGISTER OF DEEDS

LINDA KIZZIRE, DEPUTY

JAMES R. BECKETT, R.L.S. NO. 832
PROFESSIONAL ENGINEERING CONSULTANTS, P.A.

KNOW ALL MEN BY THESE PRESENTS THAT WE, THE UNDERSIGNED PROPERTY OWNERS OF THE LAND AS ABOVE SET FORTH IN THE SURVEYOR'S CERTIFICATE, HAVE CAUSED THE LAND TO BE SURVEYED AND PLATTED INTO A LOT AND BLOCK AND STREET, THE SAME TO BE KNOWN AS MID CONTINENT AIRPORT 2ND ADDITION TO WICHITA, SEDGWICK COUNTY, KANSAS.

THE STREETS ARE HEREBY DEDICATED TO AND FOR THE USE OF THE PUBLIC.

A DRAINAGE PLAN HAS BEEN APPROVED FOR THIS PLAT. ALL DRAINAGE EASEMENTS AND RIGHTS-OF-WAY SHALL REMAIN AT ESTABLISHED GRADES AND UNOBSTRUCTED TO ALLOW FOR THE CONVEYANCE OF STORM WATER, UNLESS MODIFIED WITH THE APPROVAL OF THE CITY ENGINEER.

OWNER: THE WICHITA AIRPORT AUTHORITY

BOB KNIGHT, MAYOR

PAT BURNETT, CITY CLERK

STATE OF KANSAS }
COUNTY OF SEDGWICK } SS

THIS INSTRUMENT WAS ACKNOWLEDGED BEFORE ME ON THIS _____ DAY OF _____, 2000, BY BOB KNIGHT, MAYOR AND PAT BURNETT, CITY CLERK, OF THE CITY OF WICHITA, A MUNICIPAL CORPORATION.

_____, NOTARY PUBLIC

MY APPOINTMENT EXPIRES: _____

DSNR: GJM OPER: GJM SCALE: 1"=100.00
G:\1999\99642\Airport Plats\PRELIM 2ND 06-02-2000 10:49:48 am