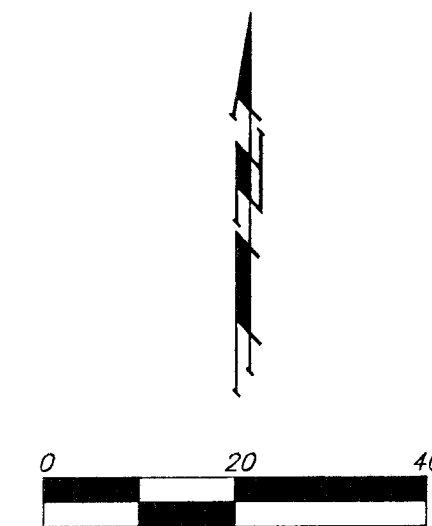


MULLER ADDITION

WICHITA, SEDGWICK COUNTY, KANSAS

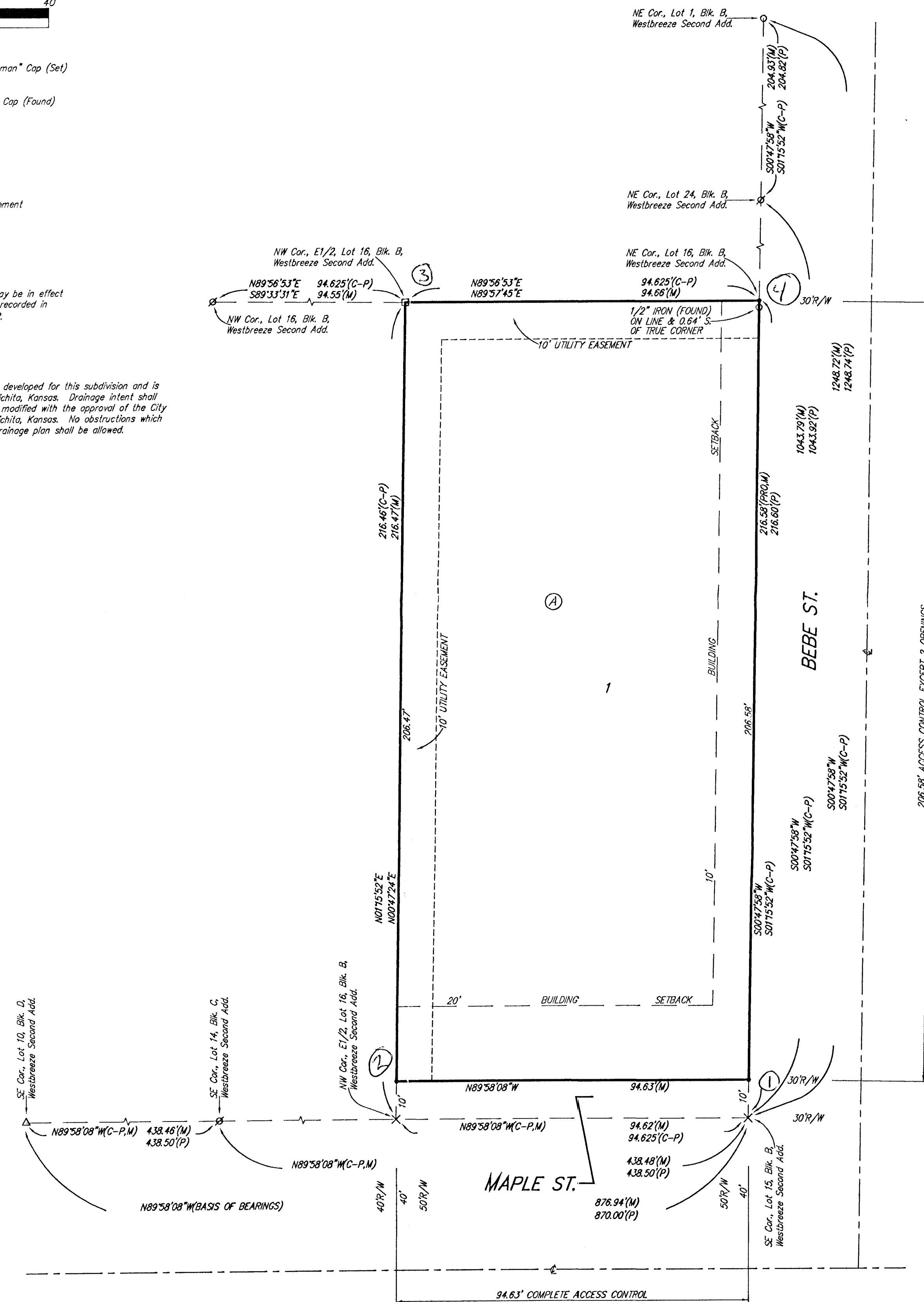


- = #4 Rebar w/ "Baughman" Cap (Set)
- = 1/2" Iron (Found)
- ⊙ = 3/4" Iron (Found)
- = 3/4" Iron w/ "C&A" Cap (Found)
- △ = #4 Rebar (Found)
- X = Cross (Set)

(M) = Measured
 (P) = Plotted
 (PRO) = Protracted Measurement
 (C-P) = Calculated per Plotted Info.

NOTE:
 Additional requirements may be in effect per Restrictive Covenants recorded in Misc. Book 252, Page 252.

NOTE:
 A drainage plan has been developed for this subdivision and is on file with the City of Wichita, Kansas. Drainage intent shall remain as depicted or as modified with the approval of the City Engineer of the City of Wichita, Kansas. No obstructions which impede the flow of this drainage plan shall be allowed.



State of Kansas) SS We, Baughman Company, P.A., Surveyors
 Sedgwick County) in aforesaid county and state do hereby certify that we have surveyed and platted "MULLER ADDITION", Wichita, Sedgwick County, Kansas and that the accompanying plat is a true and correct exhibit of the property surveyed, described as and being a replat of the E1/2 of Lots 15 and 16, Block B, Westbreeze Second Addition, Sedgwick County, Kansas.

Existing public easements and dedications being vacated by virtue of K.S.A. 12-512(b).

All being situated in the SW1/4 of Sec. 23, Twp. 27-S, R-1-W of the 6th P.M., Sedgwick County, Kansas.

Baughman Company, P.A.

Michael G. Conroy, Surveyor
 Michael G. Conroy 12-07-2002 Surveyor
 MICHAEL G. CONROY REGISTERED LAND SURVEYOR

This plat of "MULLER ADDITION", Wichita, Sedgwick County, Kansas has been submitted to and approved by the Wichita-Sedgwick County Metropolitan Area Planning Commission, Wichita, Kansas.

Dated this _____ day of _____, 2002.
 Wichita-Sedgwick County Metropolitan Area Planning Commission

_____, Chair
 J. D. Michaelis
 _____, Secretary
 Marvin S. Krout

This plat approved and all dedications shown hereon accepted by the City Council of the City of Wichita, Kansas, this _____ day of _____, 2002.

At the direction of the City Council
 _____, City Manager
 Chris Cherches
 _____, City Clerk
 Pat Burnett

Know all men by these presents that we, the undersigned, have caused the land in the surveyors certificate to be platted into a Lot, a Block, and a Street to be known as "MULLER ADDITION", Wichita, Sedgwick County, Kansas. The utility easement is hereby granted as indicated for the construction and maintenance of all public utilities. The street is hereby dedicated to and for the use of the public. All abutters rights of access to or from Maple St. over and across the south line of Lot 1, Block A, are hereby granted to the City of Wichita, Kansas. All abutters right of access to or from Bebe St. over and across the east line of Lot 1, Block A, are hereby granted to the City of Wichita, Kansas provided, however, that said Lot 1, Block A, shall have access to said Bebe St. at two locations all as shall be determined by the City Engineer of the City of Wichita, Kansas.

Reviewed in accordance with K.S.A. 58-2005 on this _____ day of _____, 2002.

Tricia L. Robello, L.S. #1246
 Deputy County Surveyor
 Sedgwick County, Kansas

Larry L. Muller, Carol A. Muller
 Larry L. Muller, Carol A. Muller

Entered on transfer record this _____ day of _____, 2002.

Don Brace, County Clerk

State of Kansas) SS The foregoing instrument acknowledged before me, this 30th day of APRIL, 2002, by Larry L. Muller and Carol A. Muller, husband and wife.

JUDITH M. TERHUNE
 Notary Public - State of Kansas
 My App'l. Exp. 11-7-2005

Judith M. Terhune, Notary Public
 JUDITH M. TERHUNE

State of Kansas) SS This is to certify that this plat has been filed for record in the office of the Register of Deeds, this _____ day of _____, 2002 at _____ o'clock _____ M; and is duly recorded.

Bill Meek, Register of Deeds
 _____, Deputy
 Linda Kizzire