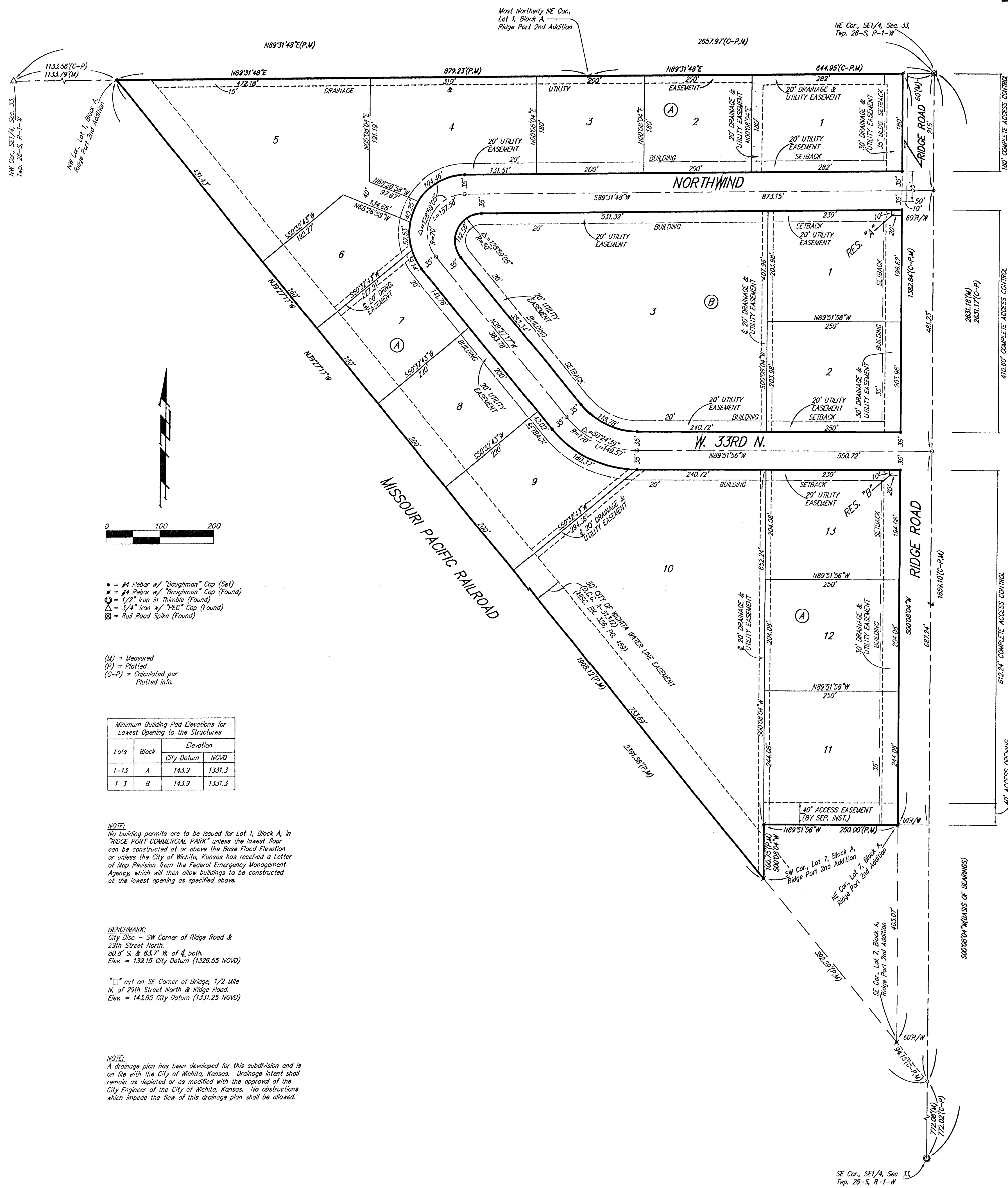


RIDGE PORT COMMERCIAL PARK WICHITA, SEDGWICK COUNTY, KANSAS



- = #4 Rebar w/ "Baughman" Cap (Set)
- = #4 Rebar w/ "Baughman" Cap (Found)
- = 1/2" Iron in Thimble (Found)
- △ = 5/4" Iron w/ "PCC" Cap (Found)
- ⊠ = Rail Road Spike (Found)

(M) = Measured
(P) = Plotted
(C-P) = Calculated per Plotted Info.

Lot	Block	City Datum	NGVD
1-13	A	143.9	1331.3
1-3	B	143.9	1331.3

NOTE:
No building permits are to be issued for Lot 1, Block A, in "RIDGE PORT COMMERCIAL PARK" unless the lowest floor can be constructed at or above the Base Flood Elevation or unless the City of Wichita, Kansas has received a Letter of Map Revision from the Federal Emergency Management Agency, which will then allow buildings to be constructed at the lowest opening as specified above.

BENCHMARK:
City Disc - SW Corner of Ridge Road & 29th Street North
80.9' S. & 63.7' W. of B. both.
Elev. = 138.15 City Datum (1326.55 NGVD)

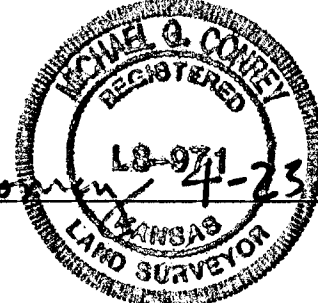
"C" out on SE Corner of Bridge, 1/2 Mile N. of 29th Street North & Ridge Road.
Elev. = 143.85 City Datum (1331.25 NGVD)

NOTE:
A drainage plan has been developed for this subdivision and is on file with the City of Wichita, Kansas. Drainage intent shall remain as depicted or as modified with the approval of the City Engineer of the City of Wichita, Kansas. No obstructions which impede the flow of this drainage plan shall be allowed.

State of Kansas) SS We, Baughman Company, P.A., Surveyors in aforesaid county and state do hereby certify that we have surveyed and platted "RIDGE PORT COMMERCIAL PARK", Wichita, Sedgwick County, Kansas, and that the accompanying plat is a true and correct exhibit of the property surveyed, described as and being a replat of Lots 1, 2, 3, 4, 5, and 6, inclusive, Block A, Ridge Port 2nd Addition, Wichita, Sedgwick County, Kansas, TOGETHER with that part of the SE 1/4 of Sec. 33, Twp. 26-S, R-1-W of the 6th P.M., Sedgwick County, Kansas lying northerly and northeasterly of Ridge Port 2nd Addition, Wichita, Sedgwick County, Kansas.

Existing public easements and dedications being vacated by virtue of K.S.A. 12-512(b).

Baughman Company, P.A.



Michael G. Conrey
Michael G. Conrey

Know all men by these presents that we, the undersigned, have caused the land in the surveyors certificate to be platted into Lots, Blocks, Streets, and Reserves to be known as "RIDGE PORT COMMERCIAL PARK", Wichita, Sedgwick County, Kansas. The utility easements are hereby granted as indicated for the construction and maintenance of all public utilities. The drainage easement is hereby granted as indicated for drainage purposes. The drainage and utility easements are hereby granted as indicated for drainage purposes and for the construction and maintenance of all public utilities. The streets are hereby dedicated to and for the use of the public. Reserves "A" and "B" are hereby reserved for signs, open space, streets, landscaping, drainage purposes, and utilities. Reserves "A" and "B" shall be owned and maintained by the lot owners association for the addition. Access controls shall be as depicted on the face of the plat and are hereby granted to the city of Wichita, Kansas. The permitted opening locations shall be as determined by the City Engineer of the City of Wichita, Kansas. The Minimum Building Pod Elevation for the lowest opening to the structures on all Lots shall be 143.9 City Datum, (1331.3 NGVD).

RRGNL, L.L.C.

Jay W. Russell
Jay W. Russell, Member

State of Kansas) SS The foregoing instrument acknowledged before me, this 30th day of APRIL, 2002, by Jay W. Russell, Member of RRGNL, L.L.C., on behalf of the limited liability company.

JUDITH M. TERHUNE
Notary Public, State of Kansas
My App't. Expires 11-7-2005
Judith M. Terhune, Notary Public

My App't. Exp. 11-7-2005

We the undersigned holders of a mortgage on the above described property, do hereby consent to this plat of "RIDGE PORT COMMERCIAL PARK", Wichita, Sedgwick County, Kansas.

Conway Bank f/k/a The First National Bank
Chris A. Anderson, Exec P

State of Kansas) SS The foregoing instrument acknowledged before me, this 6th day of MAY, 2002, by CHRIS A. ANDERSON, EXEC. V.P. of Conway Bank f/k/a The First National Bank, on behalf of the bank.

JUDITH M. TERHUNE
Notary Public, State of Kansas
My App't. Expires 11-7-2005
Judith M. Terhune, Notary Public

My App't. Exp. 11-7-2005

This plat of "RIDGE PORT COMMERCIAL PARK", Wichita, Sedgwick County, Kansas has been submitted to and approved by the Wichita-Sedgwick County Metropolitan Area Planning Commission, Wichita, Kansas.
Dated this _____ day of _____, 2002.
Wichita-Sedgwick County Metropolitan Area Planning Commission

J. D. Michaelis, Chair
Marvin S. Krout, Secretary

This plat approved and all dedications shown hereon accepted by the City Council of the City of Wichita, Kansas, this _____ day of _____, 2002.

At the direction of the City Council
Chris Cherches, City Manager
Pat Burnett, City Clerk

Reviewed in accordance with K.S.A. 58-2005 on this _____ day of _____, 2002.

Tricia L. Robello, L.S. #1246
Deputy County Surveyor
Sedgwick County, Kansas

Entered on transfer record this _____ day of _____, 2002.

Don Brace, County Clerk

State of Kansas) SS This is to certify that this plat has been filed for record in the office of the Register of Deeds, this _____ day of _____, 2002 at _____ o'clock _____ M.; and is duly recorded.

Bill Meek, Register of Deeds
Linda Kizzire, Deputy

