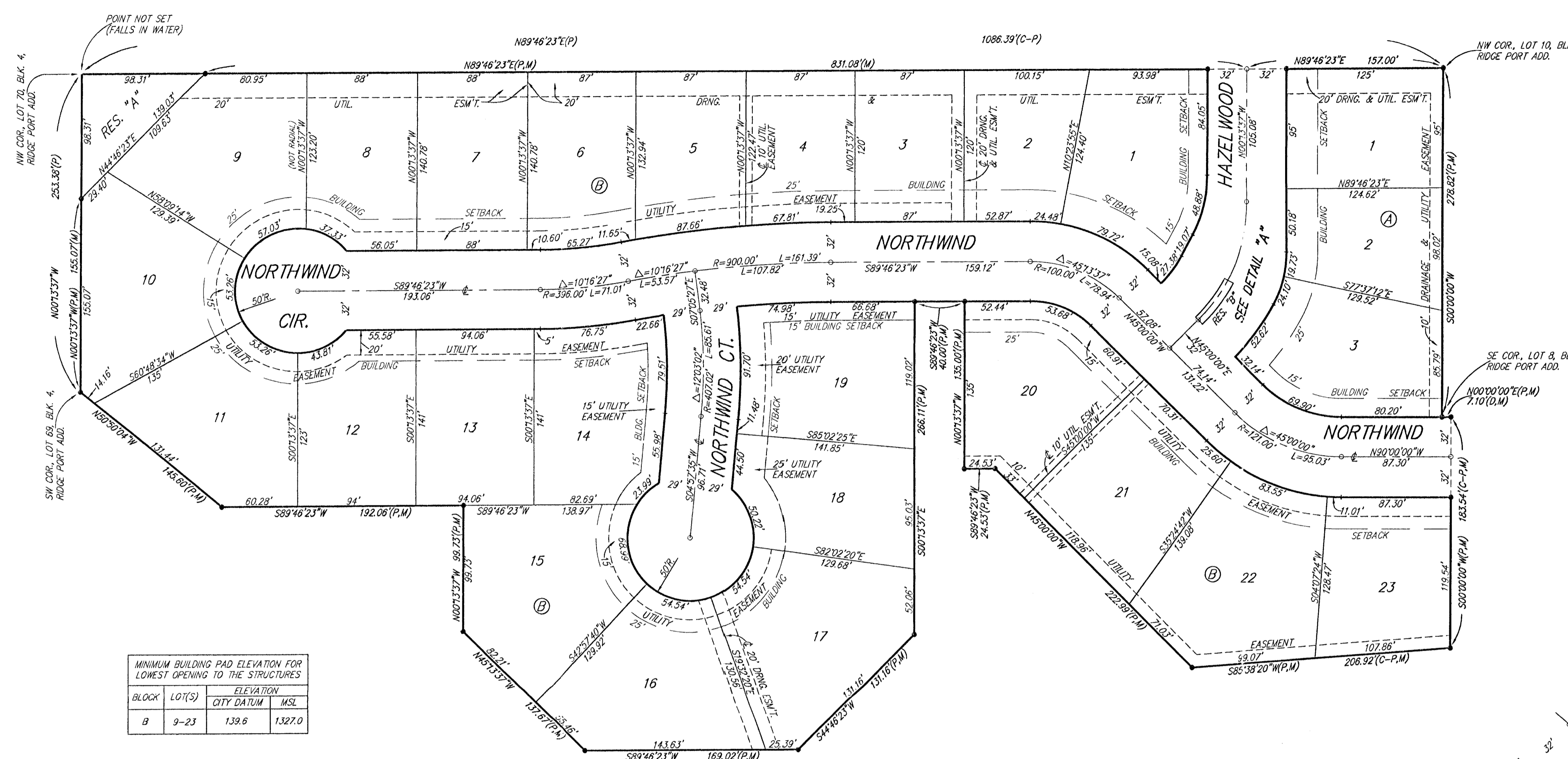


RIDGE PORT 3RD ADDITION WICHITA, SEDGWICK COUNTY, KANSAS



BLOCK	LOTS	ELEVATION	
		CITY DATUM	MSL
B	9-23	139.6	1327.0

BENCHMARK
CITY DISC - SW COR. RIDGE RD. & 29TH ST. NO.
801.8' S. & 63.1' W. OF E. BOUND.
ELEV. = 139.15 CITY DATUM (1326.55 M.S.L.)

CITY DISC - SW HUB QUARD ON R.C.B.C.
1/2 MI. N. OF 29TH ST. NO. & RIDGE RD.
ELEV. = 144.22 CITY DATUM (1331.62 M.S.L.)

Know all men by these presents that we, the undersigned, have caused the land in the surveyors certificate to be platted into Lots, Blocks, Streets, and Reserves to be known as "RIDGE PORT 3RD ADDITION", Wichita, Sedgwick County, Kansas. The utility easements are hereby granted as indicated for the construction and maintenance of all public utilities. The drainage easement is hereby granted as indicated for drainage purposes. The drainage and utility easements are hereby granted as indicated for drainage purposes and for the construction and maintenance of all public utilities. The streets are hereby dedicated to and for the use of the public. Reserve "A" is hereby reserved for drainage purposes, floodway, lakes, landscaping, pedestrian improvements, and open space. Reserve "B" is hereby reserved for entry monuments, landscaping, streets, and utilities. Reserves "A" and "B" shall be owned and maintained by the homeowners association for the addition. The Minimum Building Pad Elevations for the lowest opening to the structures shall be as indicated on the face of the plat.

RRGNL, L.L.C.

Jay W. Russell, Member

State of Kansas) SS The foregoing instrument acknowledged before me,
Sedgwick County) this 21st day of August, 2000, by Jay W. Russell, Member of
RRGNL, L.L.C., on behalf of the company.

JUDITH M. TERHUNE
Notary Public - State of Kansas
My Appl. Expires 11-7-2001

Judith M. Terhune, Notary Public
My App't. Exp. 11-7-2001

We the undersigned, holders of a mortgage on the above described property, do hereby consent to this plat of "RIDGE PORT 3RD ADDITION", Wichita, Sedgwick County, Kansas.
The First National Bank

Chris A. Anderson, Branch President

State of Kansas) SS The foregoing instrument acknowledged before me, this 21st day of September, 2000, by Chris A. Anderson, Branch President of The First National Bank, on behalf of the bank.

JUDITH M. TERHUNE
Notary Public - State of Kansas
My Appl. Expires 11-7-2001

Judith M. Terhune, Notary Public
My App't. Exp. 11-7-2001

This plat of "RIDGE PORT 3RD ADDITION", Wichita, Sedgwick County, Kansas has been submitted to and approved by the Wichita-Sedgwick County Metropolitan Area Planning Commission, Wichita, Kansas.
Dated this _____ day of _____, 2000.
Wichita-Sedgwick County Metropolitan Area Planning Commission

Francis S. Garofalo, Chairman

Marvin S. Krout, Secretary

This plat approved and all dedications shown hereon accepted by the City Council of the City of Wichita, Kansas, this _____ day of _____, 2000.

Bob Knight, Mayor

Pat Burnett, City Clerk

Reviewed in accordance with K.S.A. 58-2005 on this _____ day of _____, 2000.

Tricia L. Robello, L.S. #1246
Deputy County Surveyor
Sedgwick County, Kansas

Entered on transfer record this _____ day of _____, 2000.

James Alford, County Clerk

State of Kansas) SS This is to certify that this plat has been filed for record in the office of the Register of Deeds, this _____ day of _____, 2000, at _____ o'clock _____ M., and is duly recorded.

Bill Meek, Register of Deeds

Linda Kizzire, Deputy

Existing easements and dedications being vacated by virtue of K.S.A. 12-512(b).
All being situated in the SW 1/4 of Sec. 34, Twp. 26-S, R-1-W of the 6th P.M., Sedgwick County, Kansas
Baughman Company, P.A.

Michael G. Conroy, Surveyor

