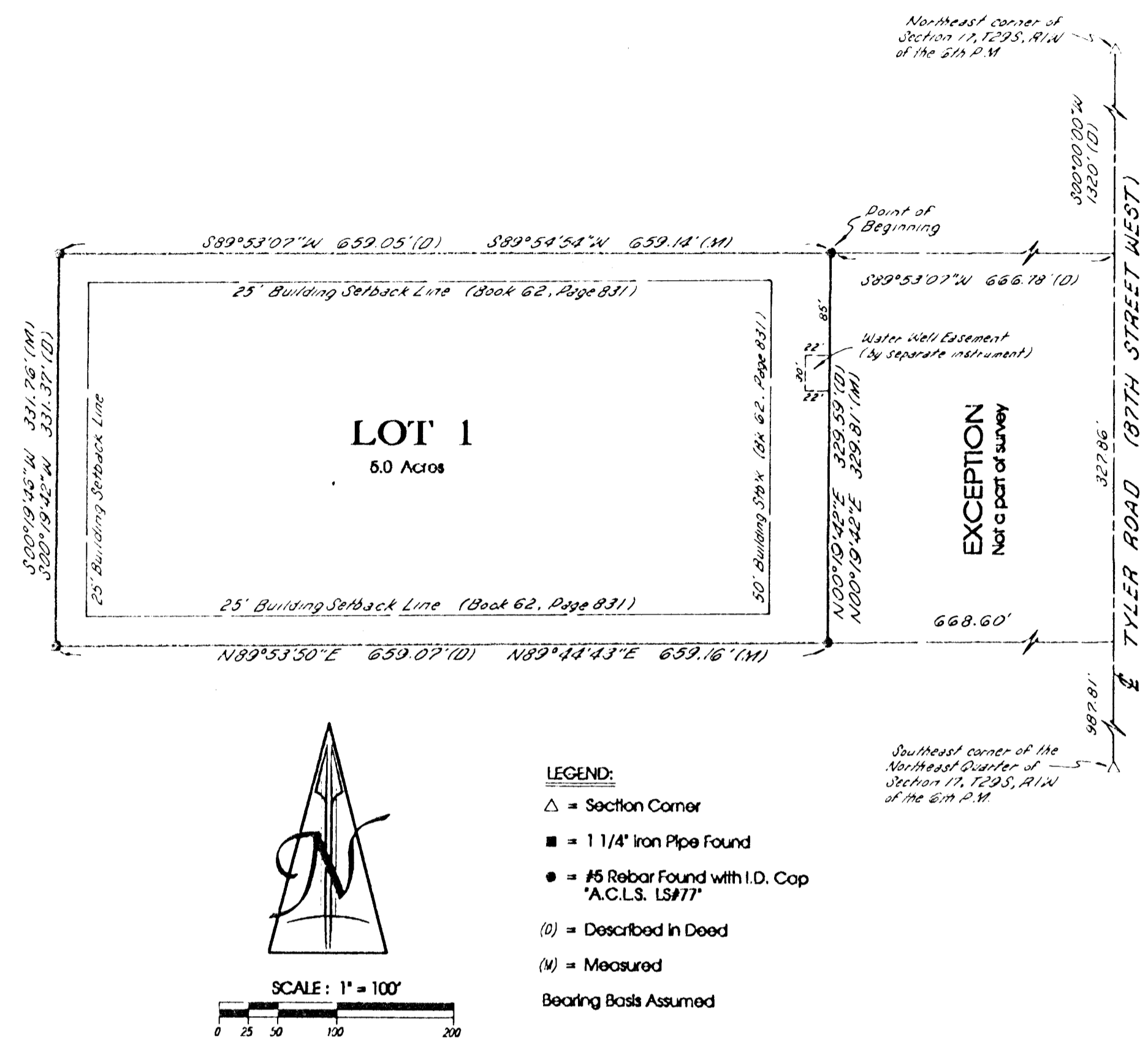


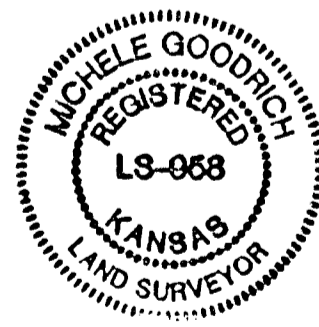
FINAL PLAT OF
"ROONEYS' FIRST ADDITION"
 SEDGWICK COUNTY, KANSAS
 IN THE NE 1/4 OF SECTION 17, T29S, R1W OF THE 6TH P.M.



State of Kansas)
 Sedgwick County) ss

Terra Tech Land Surveying, Inc., a corporation registered and authorized to practice Land Surveying in the State of Kansas, hereby certifies that it has surveyed and platted "ROONEYS' FIRST ADDITION", Sedgwick County, Kansas, and the accompanying plat is a true and correct exhibit of such survey described as:

From the Northeast corner of the Northeast Quarter of Section 17, Township 29 South, Range 1 West of the 6th P.M., Sedgwick County, Kansas; thence South on the East line of said Northeast Quarter on an assumed bearing of S00°00'00"E a distance of 1320 feet; thence S89°53'07"W, 666.78 feet to the Point of Beginning; thence continuing S89°53'07"W, 659.05 feet to a point on the West line of the East Half of said Northeast Quarter; thence S00°19'42"W on the West line of the East Half of said Northeast Quarter a distance of 331.37 feet; thence N89°53'50"E, 659.07 feet; thence N00°19'42"E, 329.59 feet to the Point of Beginning.



TERRA TECH LAND SURVEYING, INC.

Michele Goodrich LS #958

Date

Know all men by these presents that the undersigned, owners of the land described in the Surveyor's Certificate, have caused the same to be surveyed and platted into a Lot to be known as "ROONEYS' FIRST ADDITION", Sedgwick County, Kansas. A drainage plan has been developed for this plat and all drainage easements, rights-of-way, or reserves shall remain at established grades or as modified with the approval of the applicable City or County Engineer, and unobstructed to allow for the conveyance of stormwater.

Steve A. Rooney Norma J. Rooney

State of Kansas)
 Sedgwick County) ss

This instrument was acknowledged before me this _____ day of _____, 2000, by Steve A. Rooney and Norma J. Rooney

_____, Notary Public

My Commission Expires: _____

This plat of "ROONEYS' FIRST ADDITION", Sedgwick County, Kansas, has been submitted to and approved by the Wichita-Sedgwick County Metropolitan Area Planning Commission, Wichita, Kansas.

Dated this _____ day of _____, 2000.

WICHITA SEDGWICK COUNTY
 METROPOLITAN AREA PLANNING COMMISSION

_____, Chairman
 Francis S. Garofalo

_____, Secretary
 Marvin S. Krout

Reviewed in accordance with K.S.A. 58-2005 on this _____ day of _____, 2000.

Tricia L. Robello, LS#1246
 Deputy County Surveyor
 Sedgwick County, Kansas

This plat approved and all dedications shown hereon, if any, accepted by the Board of County Commissioners of Sedgwick County, Kansas, this _____ day of _____, 2000.

COUNTY COMMISSIONERS

_____, Chairman
 Thomas G. Winters

Attest: _____, County Clerk
 James Alford

Entered on transfer record this _____ day of _____, 2000.

_____, County Clerk
 James Alford

State of Kansas)
 Sedgwick County) ss

This is to certify that this instrument was filed for record in the Register of Deeds Office, at _____ o'clock _____ M., on the _____ day of _____, 2000.

_____, Register of Deeds
 Bill Meek

_____, Deputy
 Linda Kizzire