

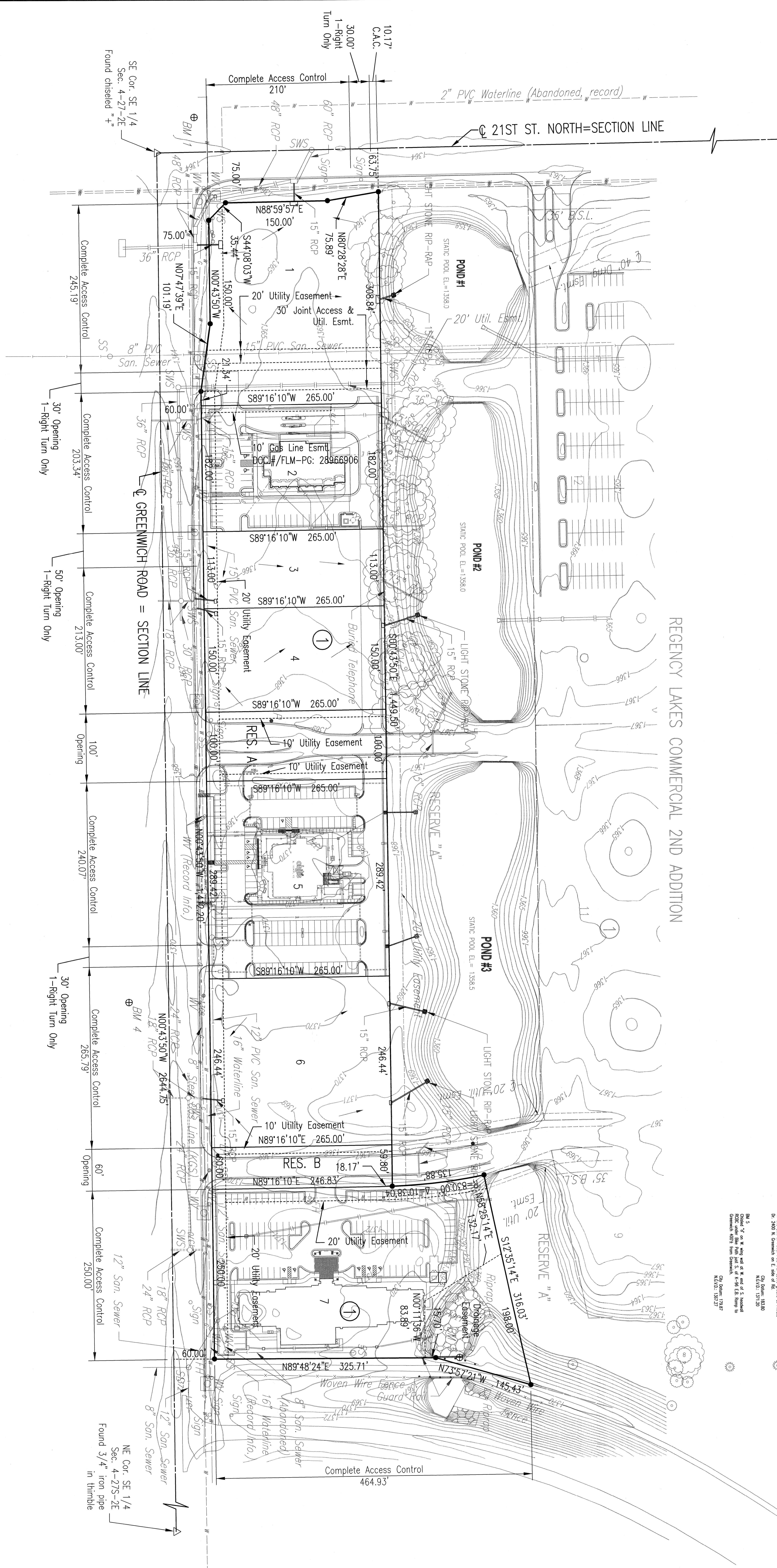
REGENCY LAKES COMMERCIAL 3RD ADDITION

AN ADDITION TO WICHITA, SEDGWICK COUNTY, KANSAS

DRAINAGE PLAN

SW Cor. SE 1/4
Sec. 4-27S-2E
Found 1/2" rebar
with MKEC cap

REGENCY LAKES COMMERCIAL 2ND ADDITION



REVISIONS

| | | |
|--------|-----------------------------------|---------------------|
| Rev. 1 | 2" Civil Plan, Title, Sheet of 34 | City Date: 12/16/16 |
| Rev. 2 | Corrected 7.12. N. and dimensions | City Date: 12/16/16 |
| Rev. 3 | Added 12" San. Sewer | City Date: 12/16/16 |
| Rev. 4 | Added 12" San. Sewer | City Date: 12/16/16 |
| Rev. 5 | Added 12" San. Sewer | City Date: 12/16/16 |

| | |
|-----------------------------------|--------|
| ANNUAL POND ELEVATIONS (LOWEST) | 1358.0 |
| DESIGN FLOOD ELEVATION (100-YEAR) | 1360.0 |
| DESIGN FLOOD ELEVATION (50-YEAR) | 1361.0 |
| DESIGN FLOOD ELEVATION (25-YEAR) | 1362.0 |
| DESIGN FLOOD ELEVATION (10-YEAR) | 1363.0 |
| DESIGN FLOOD ELEVATION (5-YEAR) | 1364.0 |
| DESIGN FLOOD ELEVATION (2-YEAR) | 1365.0 |
| DESIGN FLOOD ELEVATION (1-YEAR) | 1366.0 |
| DESIGN FLOOD ELEVATION (0.5-YEAR) | 1367.0 |
| DESIGN FLOOD ELEVATION (0.2-YEAR) | 1368.0 |
| DESIGN FLOOD ELEVATION (0.1-YEAR) | 1369.0 |

DRAINAGE PLAN

