

REGENCY LAKES COMMERCIAL 3RD ADDITION

AN ADDITION TO WICHITA, SEDGWICK COUNTY, KANSAS

DRAINAGE PLAN



SCALE: 1" = 100'

SW Cor. SE 1/4
Sec. 4-27-2E
Found 1/2" rebar
with MKEC cap

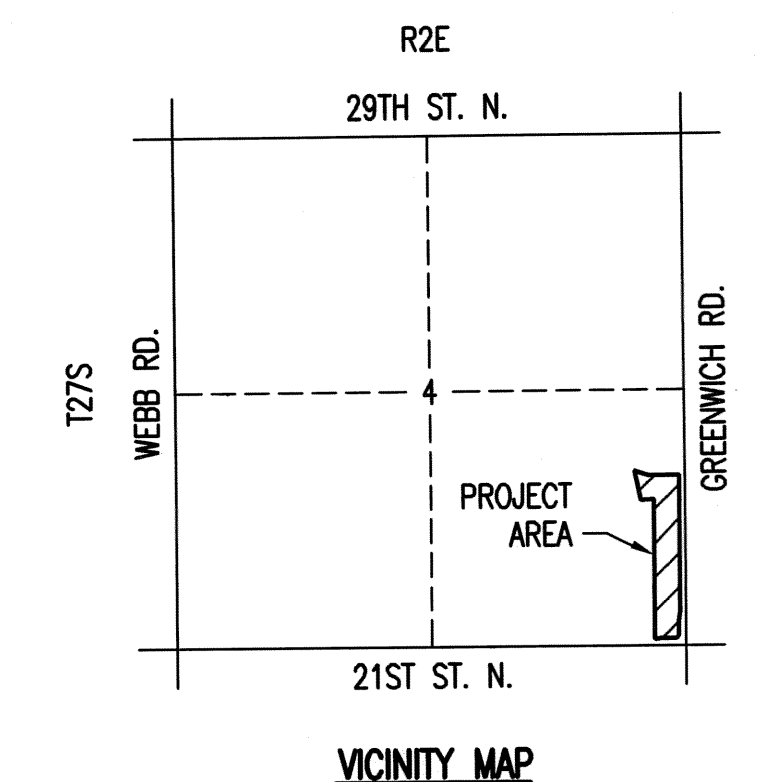
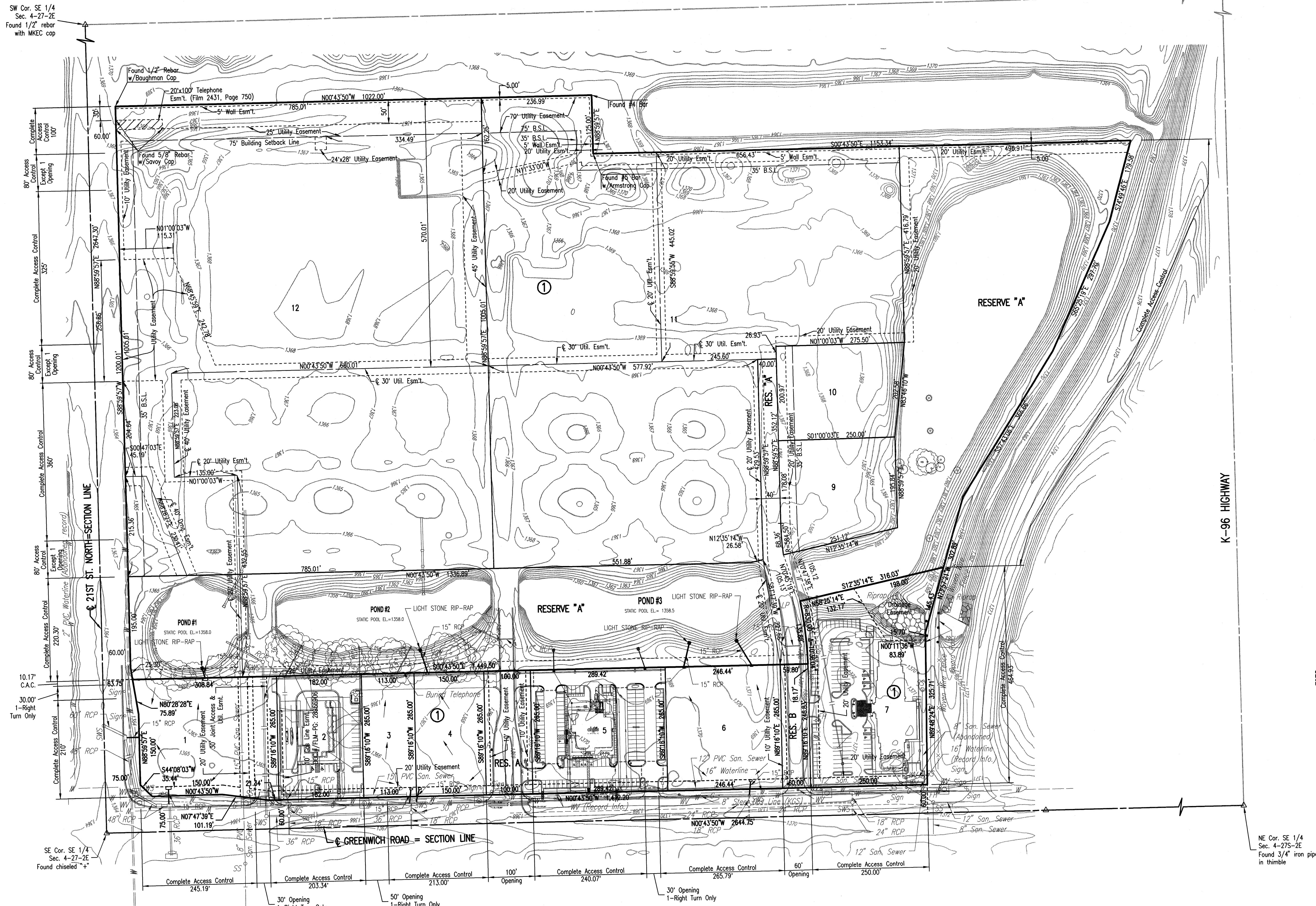
NW Cor. SE 1/4
Sec. 4-27S-2E

BENCHMARKS

- BM 1
Chiseled "d" Conc. base Traffic Signal at SW
Corner 21st. N. and Greenwich
City Datum: 176.16
N.G.V.D.: 1363.56
- BM 4
W. end Bolt in Power Pole 1 1/2' above ground at
Private Dr. 2400 N. Greenwich on E. side of Rd.
City Datum: 183.80
N.G.V.D.: 1371.20
- BM 5
Chiseled "d" on W. wing wall at W. end of S.
headwall RCBC under Bike Path just S. of K-96
E.B. Ramp to Greenwich 400± from Greenwich.
City Datum: 179.87
N.G.V.D.: 1367.27

MINIMUM PAD ELEVATIONS (LOWEST OPENING) SHALL BE AS FOLLOWS:

BLOCK	CITY DATUM	N.G.V.D.
1	180.6	1368.0
LOTS 1-4	181.1	1368.5



SE Cor. SE 1/4
Sec. 4-27-2E
Found chiseled "+"

NE Cor. SE 1/4
Sec. 4-27S-2E
Found 3/4" iron pipe
in thimble

SHEET 11 OF 20
 DATE 03/25/24
 BY REC
 Plot Scale: 1"=100'
 11-26-2008 8:43:58 AM by AEE
 C:\2008\08633\08633.Dwg