

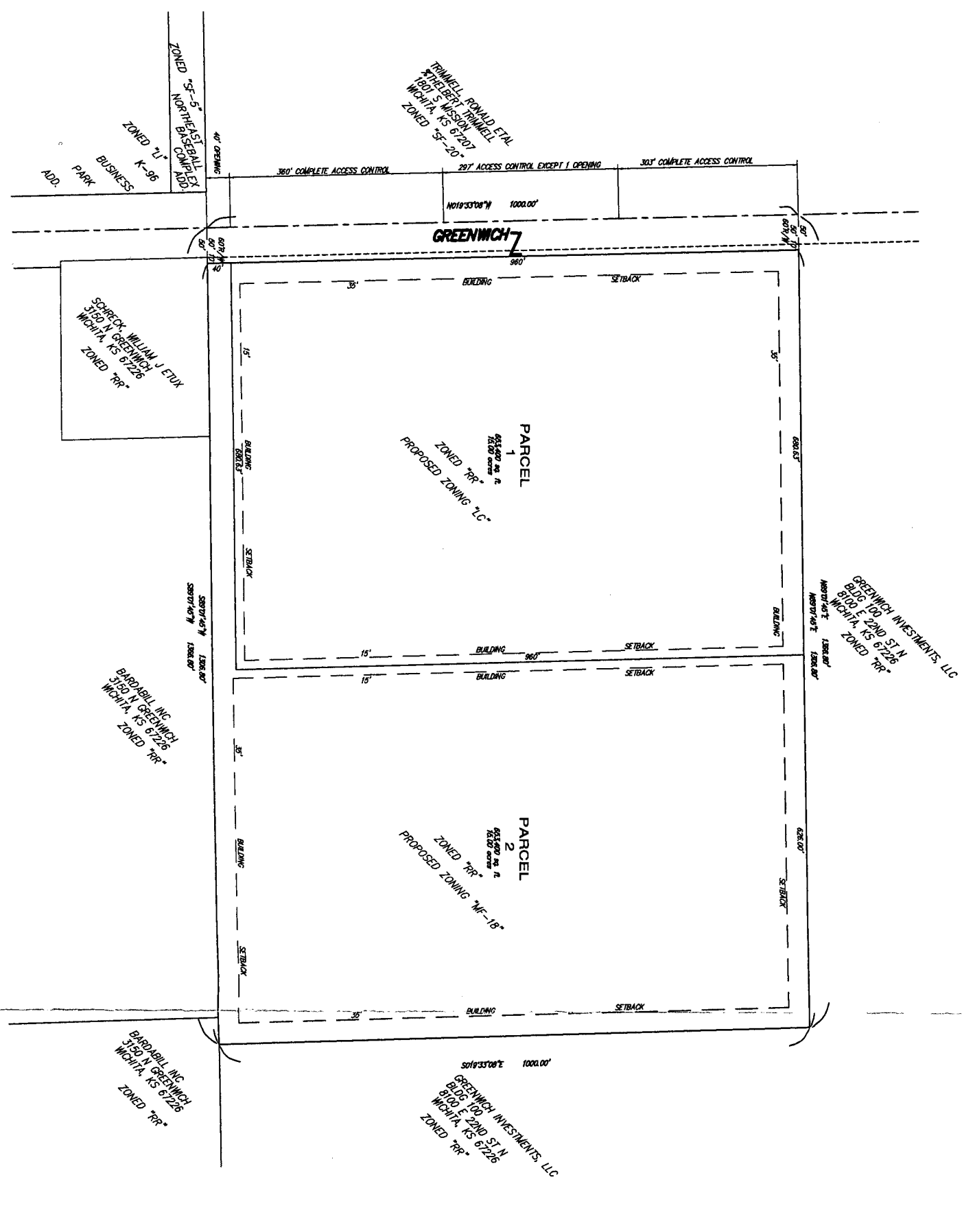
# NORTH GREENWICH DEVELOPMENT COMMUNITY UNIT PLAN DP-316

**PARCEL 1**

A. Net Area	624,620 sq. ft.
B. Maximum Building Coverage	196,380 sq. ft.
C. Maximum Gross Floor Area	228,600 sq. ft.
D. Floor Area Ratio	35 percent
E. Maximum Number of Buildings	Five (5)
F. Maximum Building Height in conformity to Chapter 202.06 Code of Ordinances	See Density
G. Access Public	See Density
H. Access Private	See Density
I. Zoning	General Office
J. Easements	See Density
K. Other	See Density

**PARCEL 2**

A. Net Area	624,620 sq. ft.
B. Maximum Building Coverage	196,380 sq. ft.
C. Maximum Gross Floor Area	228,600 sq. ft.
D. Floor Area Ratio	35 percent
E. Maximum Number of Buildings	Five (5)
F. Maximum Building Height in conformity to Chapter 202.06 Code of Ordinances	See Density
G. Access Public	See Density
H. Access Private	See Density
I. Zoning	Multi-Family 18
J. Easements	See Density
K. Other	See Density



**GENERAL PROVISIONS:**

1. Total Land Area: 1,249,240 sq. ft. (28.66 acres)
2. Total Gross Floor Area: 478,420 sq. ft.
3. Total Building Footprint: 146,100 sq. ft.
4. Building Density: 35 percent
5. Maximum Building Height: 120 feet
6. Maximum Number of Buildings: 5
7. Access Public: See Density
8. Access Private: See Density
9. Zoning: Multi-Family 18
10. Easements: See Density
11. Other: See Density
12. Utilities: See Density
13. Stormwater Management: See Density
14. Parking: See Density
15. Security: See Density
16. Fire: See Density
17. Hazardous Materials: See Density
18. Air Quality: See Density
19. Noise: See Density
20. Traffic: See Density
21. Landmarks: See Density
22. Cultural Resources: See Density
23. Biological Resources: See Density
24. Geology: See Density
25. Seismicity: See Density
26. Utilities: See Density
27. Other: See Density

**LEGAL DESCRIPTION:**

That certain parcel of land situated in the County of Santa Clara, State of California, and more particularly described as follows: [Detailed legal description text]

**REVISIONS:**

NO.	DATE	DESCRIPTION
1	11/15/18	Initial Submission
2	12/10/18	City Review
3	01/10/19	City Approval
4	02/10/19	Final Approval



SCALE: 1" = 100'

**DP-316**

NORTH GREENWICH  
DEVELOPMENT  
COMMUNITY UNIT PLAN

Baughman Company, P.A.  
Baughman