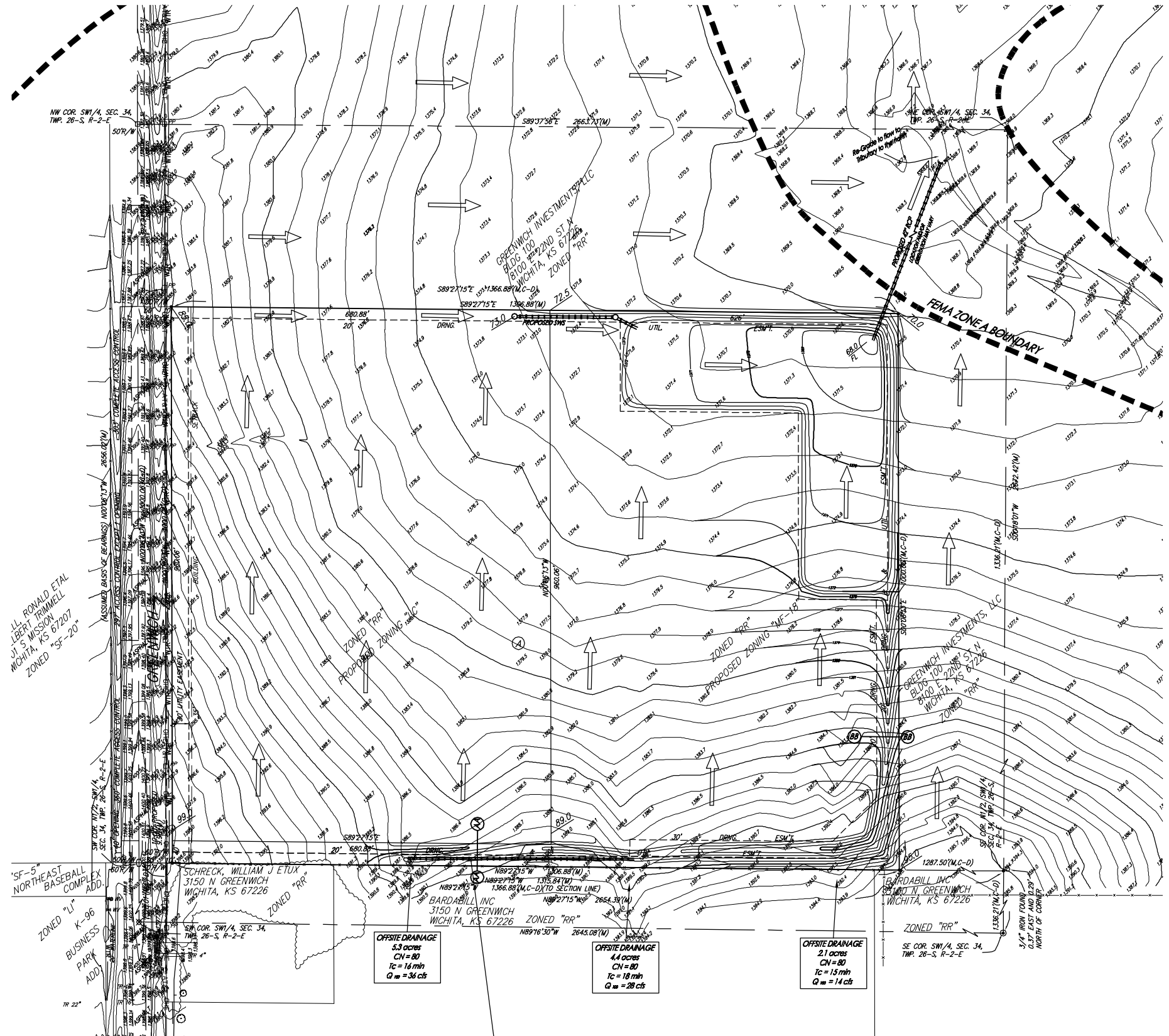


DRAINAGE & GRADING PLAN  
**NORTH GREENWICH ADDITION**  
 WICHITA, SEDGWICK COUNTY, KANSAS

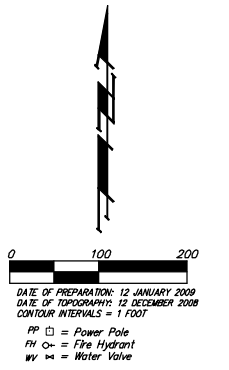


<b>EXISTING</b>
DA = 41.3
Tc = 55 min
CN = 75
Q 2 = 30 cfs
Q 5 = 49 cfs
Q 10 = 65 cfs
Q 25 = 81 cfs
Q 100 = 120 cfs
<i>These flow values also include 11.8 acres of offsite flow.</i>

<b>DEVELOPED</b>	<b>DEVELOPED</b>
DA = 8 acres	DA = 32 acres
Tc = 20 min	Tc = 42 min
CN = 98	CN = 75
<b>IMPERVIOUS</b>	<b>PERVIOUS</b>
Q 2 = 27 cfs	Q 2 = 29 cfs
Q 5 = 35 cfs	Q 5 = 46 cfs
Q 10 = 41 cfs	Q 10 = 61 cfs
Q 25 = 47 cfs	Q 25 = 76 cfs
Q 100 = 62 cfs	Q 100 = 113 cfs
<i>These flow values are for developed area of rooftop/pavement.</i>	<i>These flow values are for areas of athletic fields and undeveloped offsite flow</i>

PROPOSED DRY DETENTION (Bottom = 1368.0)			
STAGE	INFLOW	OUTFLOW	ELEVATION
2 yr	45 cfs	27 cfs	1370.10
5 yr	66 cfs	36 cfs	1370.70
100 yr	146 cfs	57 cfs	1372.40

PROPOSED POND	
ELEVATION	AREA (sq ft)
1368	1000
1369	17600
1370	46200
1371	78000
1372	122000
1373	125000



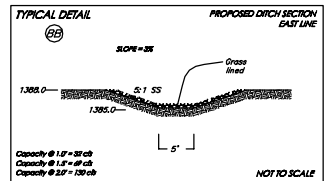
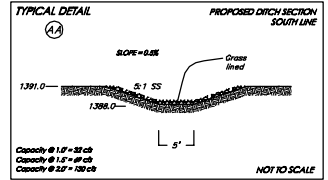
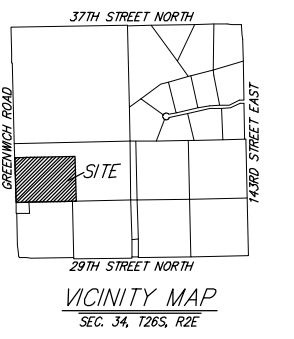
- ⊕ = #4 REBAR W/ 'BAUGHMAN' CAP (SET)
  - ⊙ = #5 REBAR OVER STONE (FOUND)
  - ⊗ = 3/4" IRON IN THIMBLE (FOUND)
  - ⊖ = 3/4" IRON (FOUND)
  - ⊕ = #6 REBAR (FOUND)
  - ⊖ = 1/2" IRON (FOUND)
  - ⊖ = RAILROAD SPIKE (FOUND)
  - ⊖ = STONE (FOUND)
- (M) = MEASURED  
 (C-D) = CALCULATED PER DESCRIBED  
 (R) = RECORD

GREENWICH INVESTMENTS, LLC  
 8100 E 22ND ST N  
 BLDG. 1000  
 WICHITA, KS 67226  
 316-648-7300

BENCHMARK:  
 RR SPIKE IN ASPHALT SW COR. N1/2, SW1/4,  
 SEC. 34, TWP. 26-S, R-2-E  
 ELEV. = 1400.59 NAVD88

RR SPIKE IN EAST FACE OF POWER POLE 174'±  
 NORTH AND 10' WEST OF SW COR. OF PLAT  
 ELEV. = 1398.64 NAVD88

NOTE:  
 ADDITIONAL BUILDING SETBACK REQUIREMENTS  
 AND RESTRICTIONS PER NORTH GREENWICH  
 DEVELOPMENT COMMUNITY UNIT PLAN DP-316.



NOTE: There is no FEMA SFHA located on this property as of this report per FEMA FIRM Panel 377 of 700 for Sedgwick County, Kansas, effective February 2, 2007. The FEMA Zone A Boundary, located just offsite to the north and east is scaled per location per FEMA FIRM Panel 377.

If a drive is needed for Lot 2, install 400' of 36" RCP with a grated KDOT style inlet. This pipe will discharge into the proposed ditches AA and BB. If no drive is needed in this area, the proposed ditch section AA is adequate with no pipe. The pipe or ditch section - or equivalents - will be selected and approved at site development.

NOTE: The location of the proposed outlet is subject to change location and orientation based on final site plans. There will also be offsite grading to allow for positive drainage to the north and into the tributary. The pond orientation and shape may also change during final site plans - but will still provide equal stage-storage shown here.