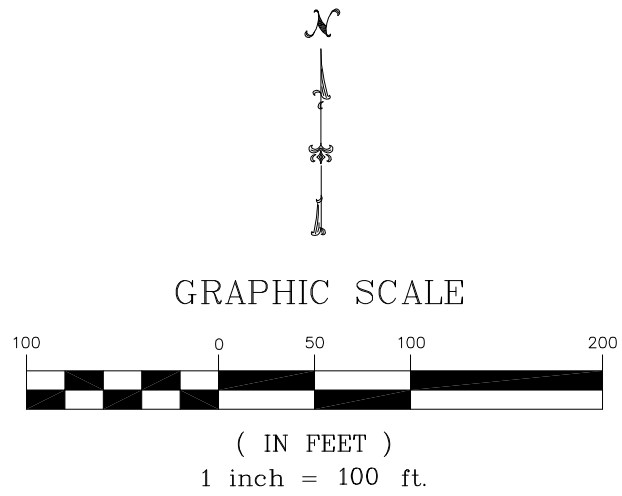
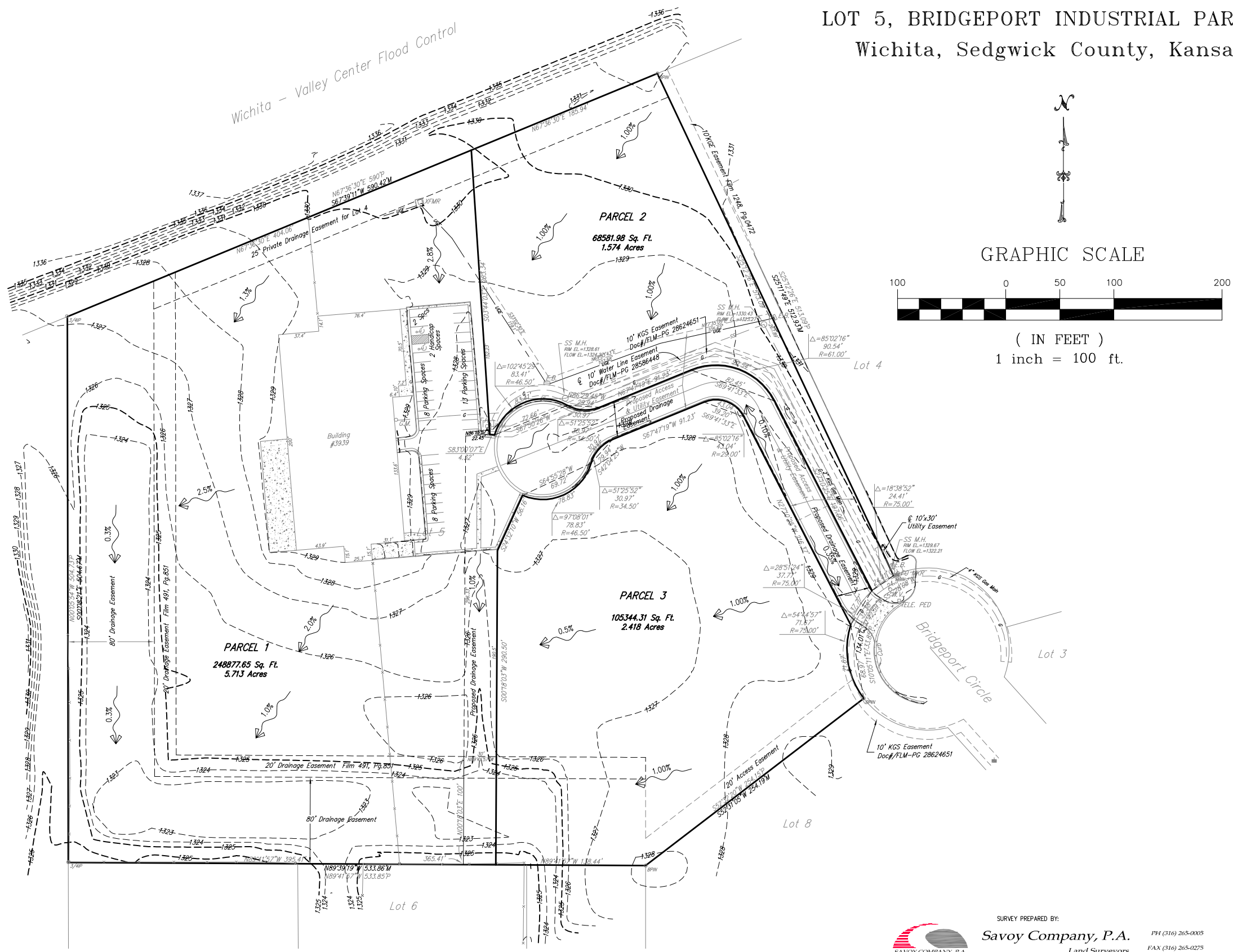


DRAINAGE PLAN FOR LOT SPLIT

LOT 5, BRIDGEPORT INDUSTRIAL PARK II Wichita, Sedgwick County, Kansas



8200 E. 34th St. N., Bldg. #1600, Suite #1603
Wichita, Kansas 67226



316.634.6776 † 316.634.6777 f
www.craftontullsparks.com

SURVEY PREPARED BY:
Savoy Company, P.A. PH (316) 265-0005
Land Surveyors FAX (316) 265-0275
535 S. Emporia, Suite 104, Wichita, KS 67202 www.savoyco.com

08G09806 B

CERTIFICATE OF AUTHORIZATION:
CA E-341 EXPIRES 12/31/2008