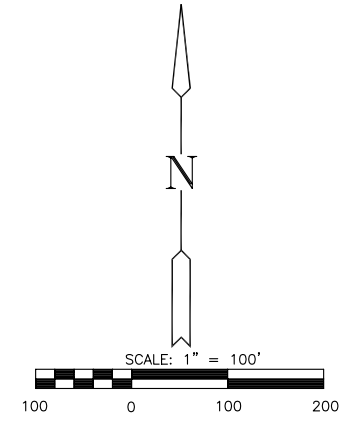
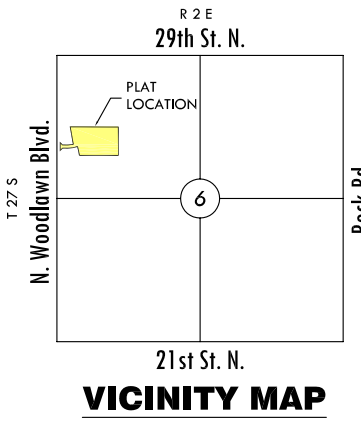


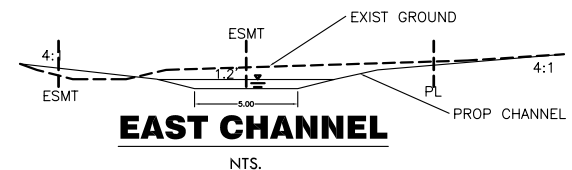
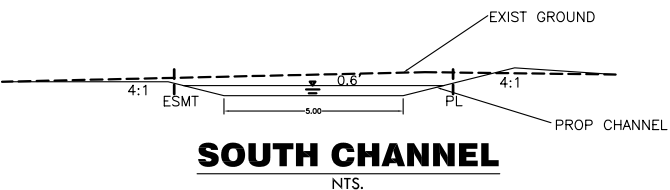
LEGEND

- ✱ BIN - CONIFEROUS TREE
- BIN - DECIDUOUS TREE
- SN - SIGN
- PK - POWER POLE
- ELEC BOX - ELECTRIC BOX
- LP - LIGHT POLE
- FH - FIRE HYDRANT
- WV - WATER VALVE
- WM - WATER METER
- △ - SECTION CORNER
- BM - BENCHMARK
- - - - - EASEMENT
- - - - - BUILDING SETBACK
- - - - - FENCE
- - - - - STORM SEWER PIPE
- - - - - WATER LINE
- - - - - SANITARY SEWER LINE
- - - - - GAS LINE
- - - - - GAS PIPELINE
- - - - - TELEPHONE LINE
- - - - - UNDERGROUND ELEC.
- - - - - OVERHEAD ELECTRIC
- - - - - FIBER OPTIC CABLE
- - - - - DRAINAGE SUB BASIN
- - - - - DRAINAGE BASIN
- - FLOW ARROW
- A17** - AREA FOR SWS SIZING



BENCH MARK

- BM - C.O.W. Benchmark Disc 24' North and 95' West of the Southwest corner of Hinkle's Addition Elev. = 1376.56 (NGVD 29)
 - BM#1 - RR Spike in West face of power pole, 443' South and 81' West of the Northwest Corner of Hinkle's Addition Elev. = 1378.15 (NGVD 29)
 - BM#2 - RR spike in West Face of power pole, 116' North and 82' West of the Northwest Corner of Hinkle's Addition Elev. = 1375.89 (NGVD 29)
- Contours shown are in NAVD 88 Datum
NAVD 88= NGVD 29 + 0.5'



DATE
FEBRUARY 2009

REVISED
MARCH 4, 2009
MARCH 17, 2009
MARCH 19, 2009

DESIGN BY
KLA

DRAWN BY
CMJ

CHECKED BY
GJA

J:\Civil\09040 North Point Senior Living.dwg,Drng_09040_dup.dwg