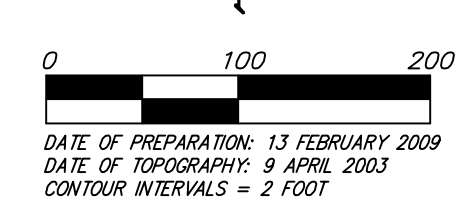


DRAINAGE & GRADING PLAN

NORTH FORTY-FIFTH PLACE WICHITA, SEDGWICK COUNTY, KANSAS



DATE OF PREPARATION: 13 FEBRUARY 2009
DATE OF TOPOGRAPHY: 9 APRIL 2003
CONTOUR INTERVALS = 2 FOOT

MARKHURD
4040204
TOPOGRAPHY BY PHOTOGRAMMETRIC METHODS FROM AERIAL PHOTOGRAPHS TAKEN ON APR 9, 2003.

OWNERS:
R&R REALTY, LLC
177N. JAY RUSSELL
PO BOX 75337
WICHITA, KS 67275
722-2417

DONALD R. & RAMONA HAYES
4356 N. RIDGE ROAD
WICHITA, KS 67205
316-721-3259

BENCHMARK:
COUNTY BENCHMARK, RAIL ROAD SPIKE IN POWER POLE,
NORTHEAST CORNER 45TH ST N AND RIDGE ROAD
ELEV. = 1336.69 NGVD29

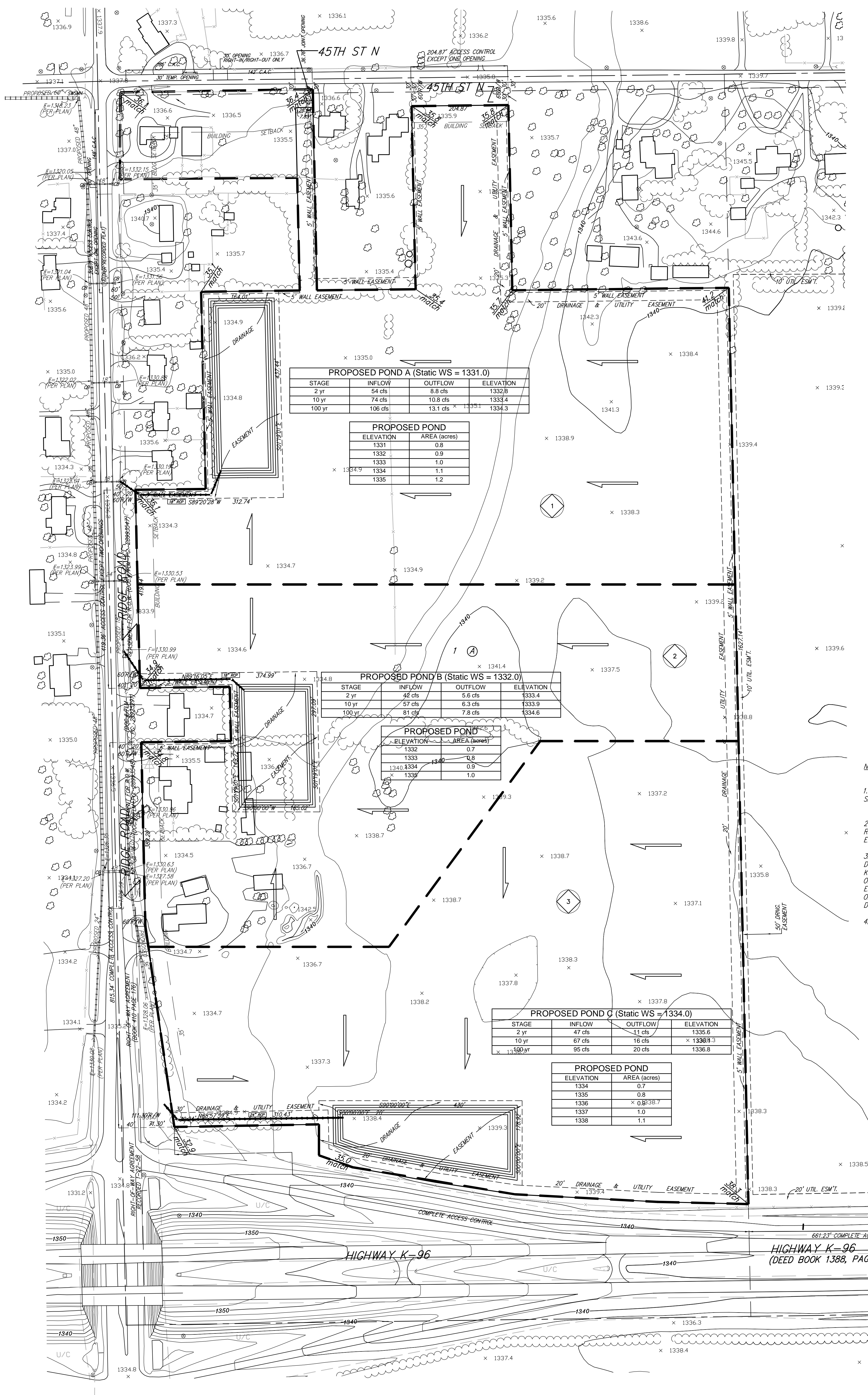
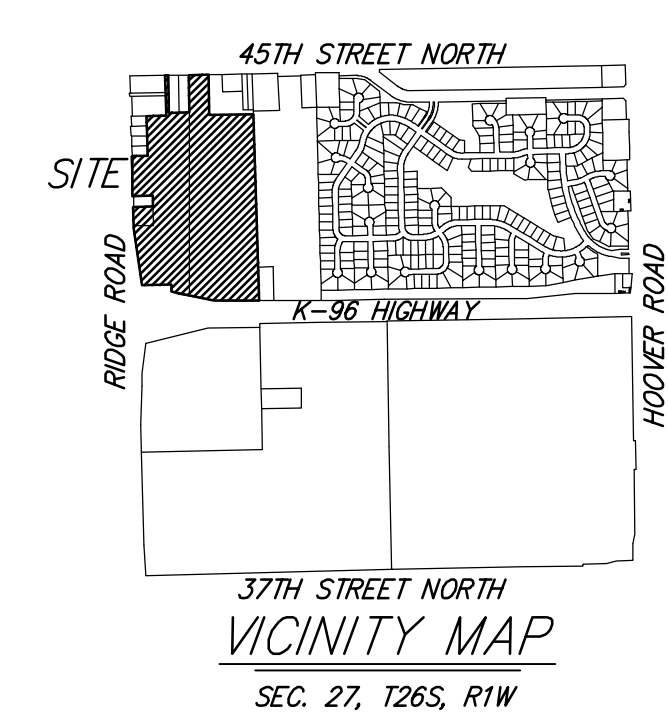
LOT	BLOCK	ELEVATION
North 1/2, Lot 1	A	1336.6
South 1/2, Lot 1	A	1338.8

Developed Intensity	5yr	10yr	100yr
Rational C	4.56	5.22	7.37
	0.69	0.73	0.8

Basin ID	Area acres	Developed Flowrates		
		5-yr cfs	10-yr cfs	100-yr cfs
1	22.5	70.8	85.7	132.7
2	15.9	50.0	60.6	93.7
3	19.4	61.0	73.9	114.4
TOTAL	57.8	182	220	341

NOTE: Site Currently located in FEMA Zone X per FEMA FIRM Panel 195 of 700, for Sedgwick County, Kansas, Map Number 20173C0195E Effective February 2, 2007.

- NOTES:
- ALL LOTS SHALL MEET MINIMUM PAD REQUIREMENT AS SHOWN ON THE RECORDED PLAT.
 - LOT DIMENSIONS HAVE BEEN OMITTED ON THIS PLAN. REFER TO THE RECORDED PLAT FOR FINAL DIMENSION, EASEMENT, & BUILDING SETBACK INFORMATION.
 - A DRAINAGE PLAN HAS BEEN DEVELOPED FOR THIS DEVELOPMENT AND IS ON FILE WITH THE CITY OF WICHITA, KANSAS. DRAINAGE INTENT SHALL REMAIN AS DEPICTED OR AS MODIFIED WITH THE APPROVAL OF THE CITY ENGINEER OF THE CITY OF WICHITA, KANSAS. NO OBSTRUCTIONS WHICH IMPEDE THE FLOW OF THIS DRAINAGE PLAN SHALL BE ALLOWED.
 - ALL ELEVATIONS SHOWN ARE IN NGVD.



PROPOSED POND A (Static WS = 1331.0)

STAGE	INFLOW	OUTFLOW	ELEVATION
2 yr	54 cfs	8.8 cfs	1332.8
10 yr	74 cfs	10.8 cfs	1333.4
100 yr	106 cfs	13.1 cfs	1334.3

PROPOSED POND

ELEVATION	AREA (acres)
1331	0.8
1332	0.9
1333	1.0
1334	1.1
1335	1.2

PROPOSED POND B (Static WS = 1332.0)

STAGE	INFLOW	OUTFLOW	ELEVATION
2 yr	42 cfs	5.6 cfs	1333.4
10 yr	57 cfs	6.3 cfs	1333.9
100 yr	81 cfs	7.8 cfs	1334.6

PROPOSED POND

ELEVATION	AREA (acres)
1332	0.7
1333	0.8
1334	0.9
1335	1.0

PROPOSED POND C (Static WS = 1334.0)

STAGE	INFLOW	OUTFLOW	ELEVATION
2 yr	47 cfs	11 cfs	1335.6
10 yr	67 cfs	16 cfs	1338.3
100 yr	95 cfs	20 cfs	1336.8

PROPOSED POND

ELEVATION	AREA (acres)
1334	0.7
1335	0.8
1336	0.838.7
1337	1.0
1338	1.1

NORTH FORTY-FIFTH PLACE

Baughman Company, P.A.
315 Ellis St. Wichita, KS 67211 P 316-262-7271 F 316-262-0149
ENGINEERING | SURVEYING | PLANNING | LANDSCAPE ARCHITECTURE