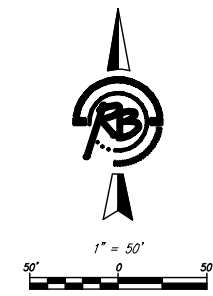
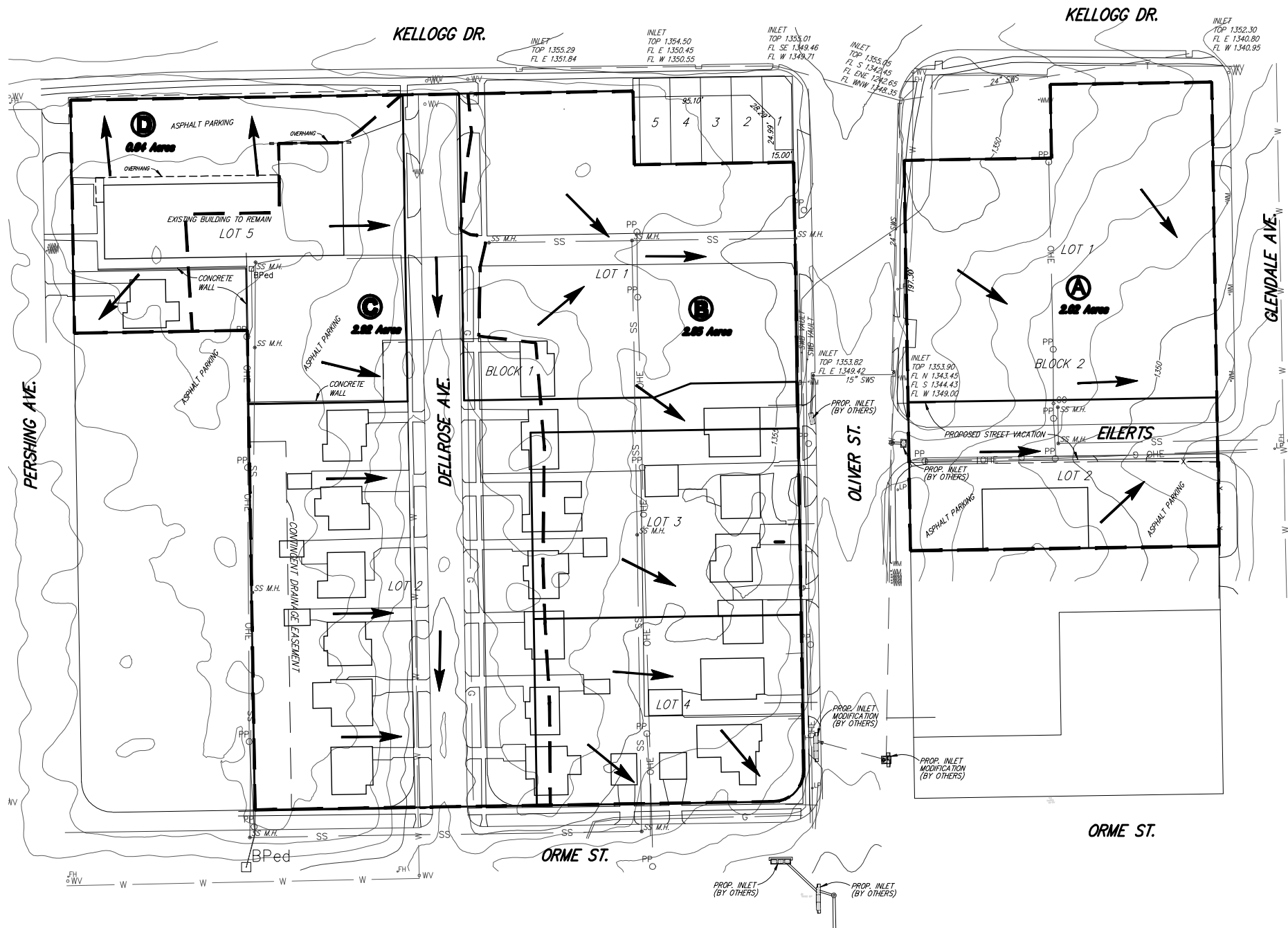


# Drainage Plan

## ANN WALENTA COMMERCIAL ADDITION

### Wichita, Sedgwick County, Kansas



**EAST OF OLIVER**  
 IMPERVIOUS AREA = 60811 SQ FT (1.40 Ac.)  
 PLATTED AREA = 88128 SQ FT (2.02 Ac.)

**WEST OF OLIVER**  
 IMPERVIOUS AREA 163163 SQ FT (3.75 Ac.)  
 PLATTED AREA 279155 SQ FT (6.41 Ac.)

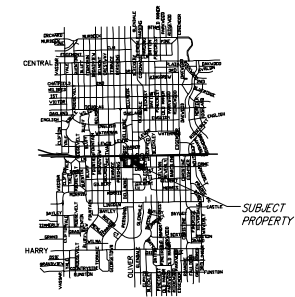
- NOTES:**
1. IMPERVIOUS AREA TOTALS WERE DETERMINED FROM A 1996 AERIAL AND TOPOGRAPHIC SURVEY DATA.
  2. EXCESS RUNOFF FROM THE 100-YEAR DESIGN STORM WILL BE DETAINED AND/OR RETAINED ON SITE.
  3. IF PARKING LOT DETENTION IS UTILIZED THE DEPTH WILL BE LIMITED TO 8". EVERY PARKING SPACE WHERE 8" PONDING DEPTH MAY BE EXCEEDED SHALL HAVE A POST-MOUNTED WARNING SIGN AT THE FRONT OF THE STALL, CLEARLY NOTED "WARNING - STORMWATER PONDING AREA".
  4. FINAL DRAINAGE SYSTEM DESIGN, INCLUDING RUNOFF AND DETENTION CALCULATIONS, SHALL BE DESIGNED AT THE TIME OF DEVELOPMENT.

	Area (Ac.)	L (Min.)	$i_p$ (in/hr)	$i_{100}$ (in/hr)	$C_p$	$C_{100}$	$C_e$	$C_{100}$
A	2.02	15	5.22	7.37	0.70	0.77	7.4	11.5
B	2.85	15	5.22	7.37	0.63	0.71	9.4	14.9
C	2.92	15	5.22	7.37	0.63	0.71	9.6	15.3
D	0.64	15	5.22	7.37	0.63	0.71	2.1	3.3

Soil Type: Urban Farmum  
 Hydrologic Group: B

BENCH MARK: CHISELED SQUARE ON THE TOP OF CURB AT THE CENTERLINE OF PERSHING, AT THE NORTH END OF PERSHING ON THE SOUTH SIDE OF E. KELLOGG DR. S. ELEVATION = 1357.61 (NAVD88)

BENCH MARK: CHISELED SQUARE ON THE TOP OF CURB AT THE SOUTH CURB RETURN, AT THE SOUTHEAST CORNER OF GLENDALE AND E. KELLOGG DR. S. ELEVATION = 1350.90 (NAVD88)



VICINITY MAP  
 NOT TO SCALE

DWG FILE: SURVEY BASE  
 PROJECT NO. 3391P  
 Mar. 4, 2009



**Ruggles & Bohm, P.A.**  
 Engineering, Surveying, Land Planning  
 824 North Main  
 Wichita, Kansas 67203  
 www.rbkansas.com

(318) 284-0008  
 (318) 284-4821 fax  
 E-mail: info@rbkansas.com