

DRAINAGE PLAN FOR
REMINGTON PLACE 2ND ADDITION
 AN ADDITION TO WICHITA, SEDGWICK COUNTY, KANSAS

OWNER: JAN D. & GERARDA DE BAKKER
 UNPLATTED

ZONED: SF-20

SCALE: 1"=50'

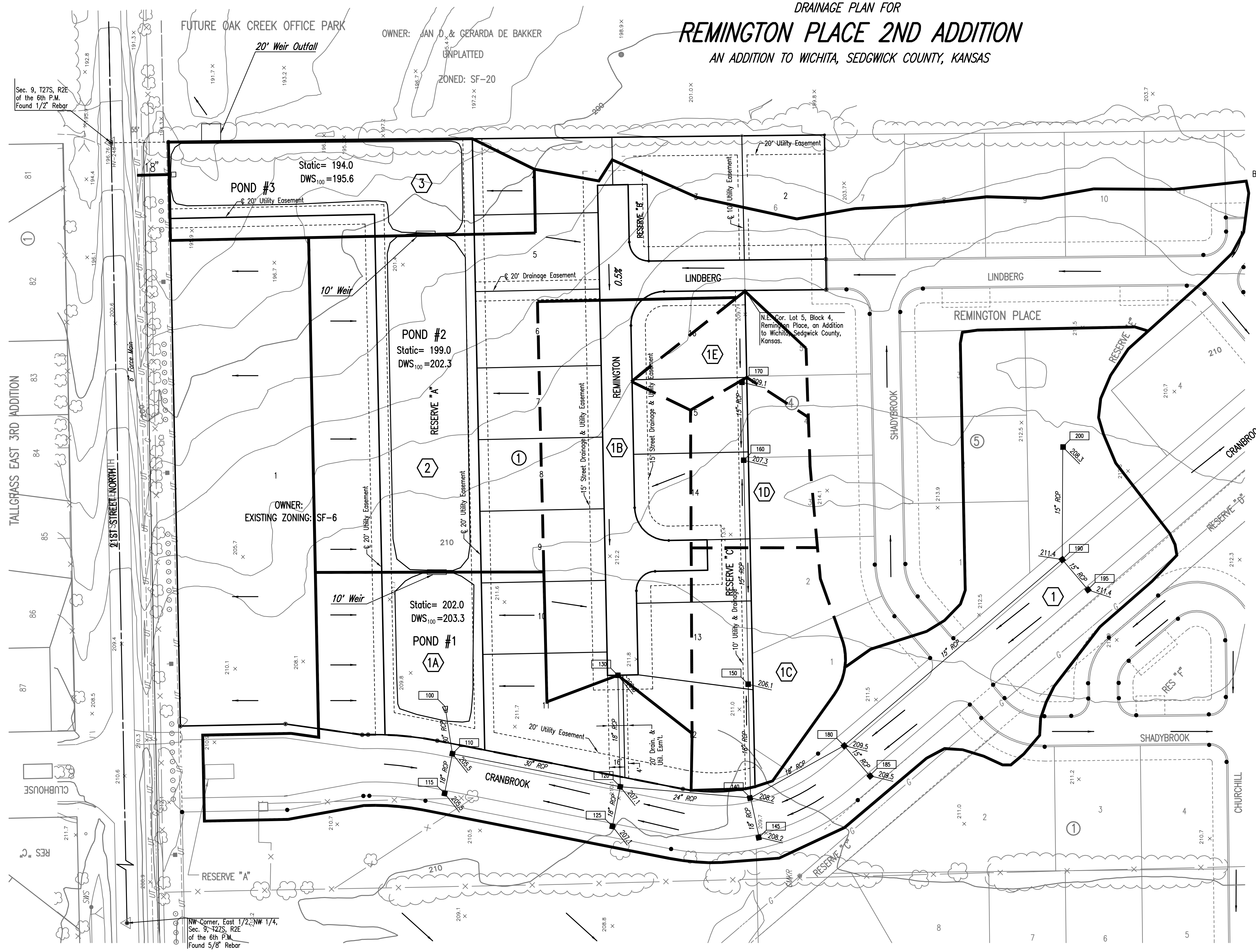
B.M. - CITY OF WICHITA TABLET 39 FEET NORTH OF NORTH 1/4 CORNER SECTION 9, T27S, R2E.
 ELEV.=196.23(City Datum)
 Elev.=1383.63 N.G.V.D.

BASIN 1 SHALL BE GRADED TO DRAIN TO PROPOSED POND #1 VIA APPROVED DRAINAGE CONVEYANCE METHODS.
 BASIN 2 SHALL BE GRADED TO DRAIN TO PROPOSED POND #2 VIA APPROVED DRAINAGE CONVEYANCE METHODS.
 BASIN 3 SHALL BE GRADED TO DRAIN TO PROPOSED POND #3 VIA APPROVED DRAINAGE CONVEYANCE METHODS.

- LEGEND**
- BASIN IDENTIFIER
 - MINOR BASIN BOUNDARY
 - MAJOR BASIN BOUNDARY
 - MINOR STORM WATER FLOW (Q2)
 - NODE IDENTIFIER
 - STORM SEWER AND INLET
 - SPOT ELEVATION

SURFACE AREAS

- 1A = 1.27 ACRES
- 1B = 1.45 ACRES
- 1C = 0.78 ACRES
- 1D = 0.46 ACRES
- 1E = 0.29 ACRES
- 1 = 4.55 ACRES
- 2 = 8.19 ACRES
- 3 = 0.86 ACRES



Sec. 9, T27S, R2E of the 6th P.M. Found 1/2" Rebar

NW Corner, East 1/2, NW 1/4, Sec. 9, T27S, R2E of the 6th P.M. Found 5/8" Rebar

Saved 04-07-2009 1:00:14 PM by AEE
 Plot Scale 1:50 04-07-2009 1:00:37 PM by AEE
 C:\2008\08758\Drawings\2-08758(04450)DRAINAGE