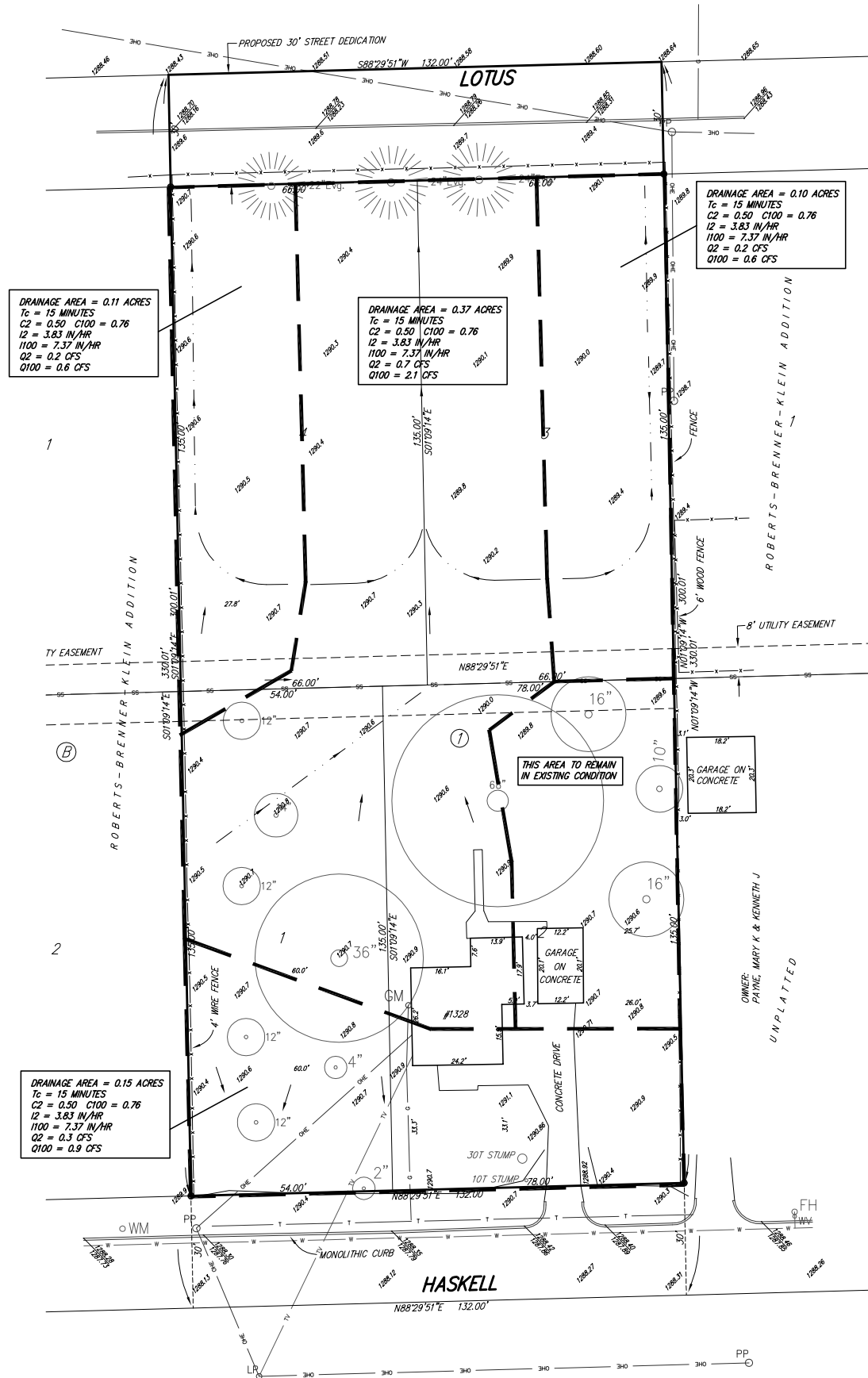
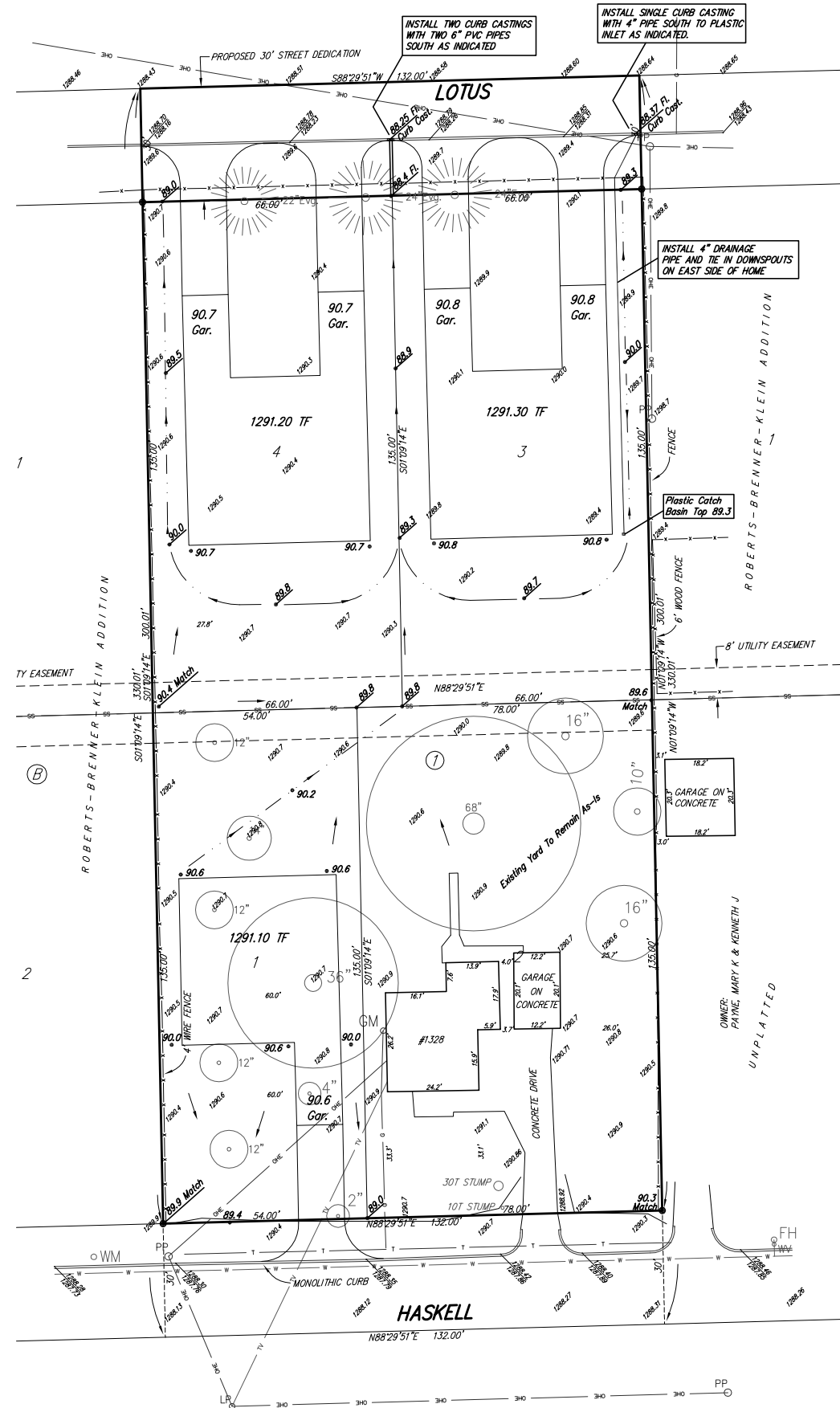


Drainage Plan



Grading Plan



Drainage Plan / Grading Plan LEDGESTONE ADDITION Wichita, Sedgwick County, Kansas



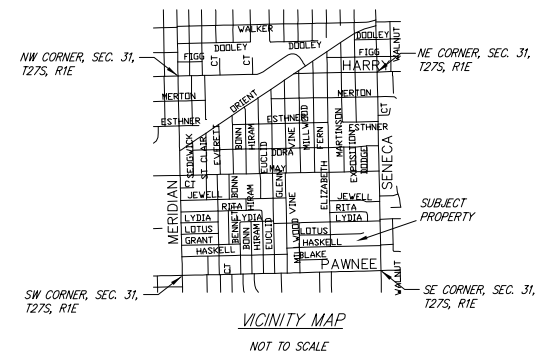
1" = 20'

LEGEND

- SS SANITARY SEWER (CITY OF WICHITA)
- OHE OVERHEAD ELECTRIC (WESTAR)
- T UNDERGROUND TELEPHONE (AT&T)
- TV OVERHEAD CABLE TELEVISION (COX COMMUNICATIONS)
- G GAS LINE (KANSAS GAS SERVICE)
- W WATER MAIN (CITY OF WICHITA)
- GM GAS METER
- FH FIRE HYDRANT
- WV WATER VALVE
- PP POWER POLE (WESTAR)
- LP LIGHT POLE
- SS M.H. SANITARY SEWER MANHOLE (CITY OF WICHITA)
- LOCATION OF SPOT ELEVATION
- DECIDUOUS TREE (CALIPER INDICATED)
- CONIFER TREE (CALIPER INDICATED)

BENCH MARK: CHISELED SQUARE ON TOP OF CURB AT THE WEST CURB RETURN AT LYDIA & RITA. ELEVATION = 1288.62 (NGVD29)

ON-SITE BENCH MARK: CHISELED SQUARE ON TOP OF CURB AT THE NORTHEAST CORNER OF LOT 1, BLOCK B, ROBERTS-BRENNER-KLEIN ADDITION, WICHITA, SEDGWICK COUNTY, KANSAS. ELEVATION = 1288.68 (NGVD29)



DWG FILE: DRAINAGE PLAN
PROJECT NO. 3321P
NOVEMBER 11, 2008



Ruggles & Bohm, P.A.
Engineering, Surveying, Land Planning

924 North Main (316) 264-8008
Wichita, Kansas 67203 (316) 264-4621 fax
www.rbkansas.com E-mail: info@rbkansas.com