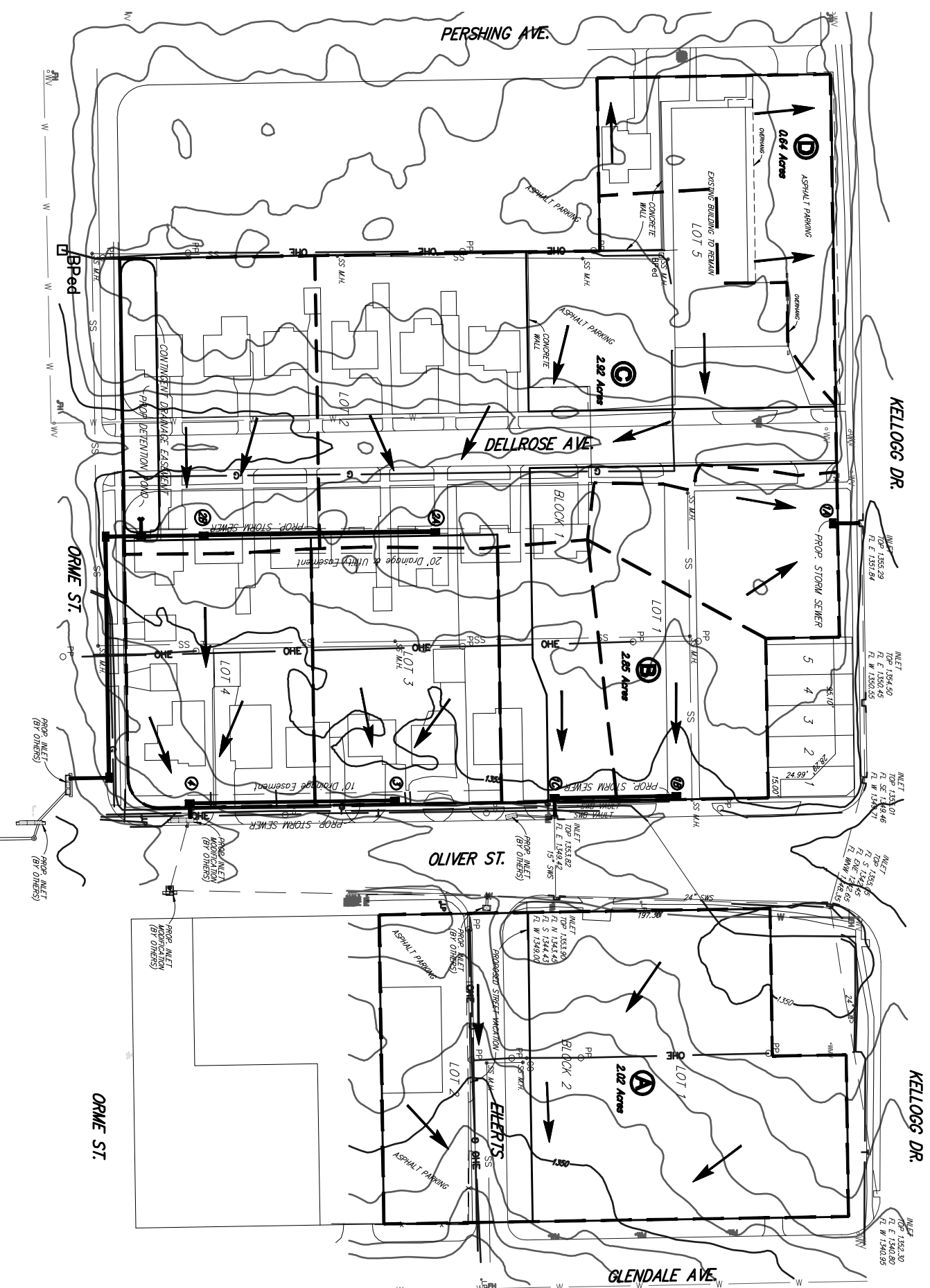


Drainage Plan

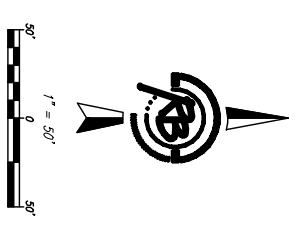
ANN WALENTA COMMERCIAL ADDITION

Wichita, Sedgwick County, Kansas



BENCH MARK: CHISELED SQUARE ON THE TOP OF CURB AT THE CENTERLINE OF PERSHING, AT THE NORTH END OF PERSHING ON THE SOUTH SIDE OF E. KELLOGG DR. S. ELEVATION = 1357.61 (NAVD88)

BENCH MARK: CHISELED SQUARE ON THE TOP OF CURB AT THE SOUTH CURB RETURN, AT THE SOUTHEAST CORNER OF GLENDALE AND E. KELLOGG DR. S. ELEVATION = 1350.90 (NAVD88)



EAST OF OLIVER
 IMPERVIOUS AREA = 60811 SQ FT (1.40 AC.)
 FLATED AREA = 88128 SQ FT (2.02 AC.)

WEST OF OLIVER
 IMPERVIOUS AREA 163163 SQ FT (3.75 AC.)
 FLATED AREA 279195 SQ FT (6.41 AC.)

- NOTES:**
1. IMPERVIOUS AREA TOTALS WERE DETERMINED FROM A 1996 AERIAL AND TOPOGRAPHIC SURVEY DATA.
 2. EXCESS RUNOFF FROM THE 100-YEAR DESIGN STORM WILL BE DETAINED AND/OR RETAINED ON SITE.
 3. IF PARKING LOT DETENTION IS UTILIZED THE DEPTH WILL BE LIMITED TO 8". EVERY PARKING SPACE WHERE 8" PONDING DEPTH MAY BE EXCEEDED SHALL HAVE A POST-MOUNTED WARNING SIGN AT THE FRONT OF THE STALL, CLEARLY NOTED WARNING - STORMWATER PONDING AREA.
 4. FINAL DRAINAGE SYSTEM DESIGN, INCLUDING RUNOFF AND DETENTION CALCULATIONS, SHALL BE DESIGNED AT THE TIME OF DEVELOPMENT.

	Area (Ac.)	I _h (Min.)	I _h (In/Hr)	I _h (In/Hr)	C _o	C _o	Q _o	Q _o
A	2.02	15	5.22	7.37	0.70	0.77	7.4	11.5
B	2.85	15	5.22	7.37	0.63	0.71	9.4	14.9
C	2.92	15	5.22	7.37	0.63	0.71	9.6	15.3
D	0.64	15	5.22	7.37	0.63	0.71	2.1	3.3

Soil Type: Urban Fennum
 Hydrologic Group: B

	Area (Ac.)	I _h (Min.)	I _h (In/Hr)	C _o	Q _o	Pipe Size
1A	0.48	15	7.37	0.88	3.1	15"
1B	0.92	15	7.37	0.89	3.4	15"
1C	0.40	15	7.37	0.89	2.6	15"
2A	2.04	15	7.37	0.89	13.4	18"
2B	0.88	15	7.37	0.89	5.8	24"
3	0.23	15	7.37	0.89	4.8	15"
4	0.22	15	7.37	0.89	4.7	18"

