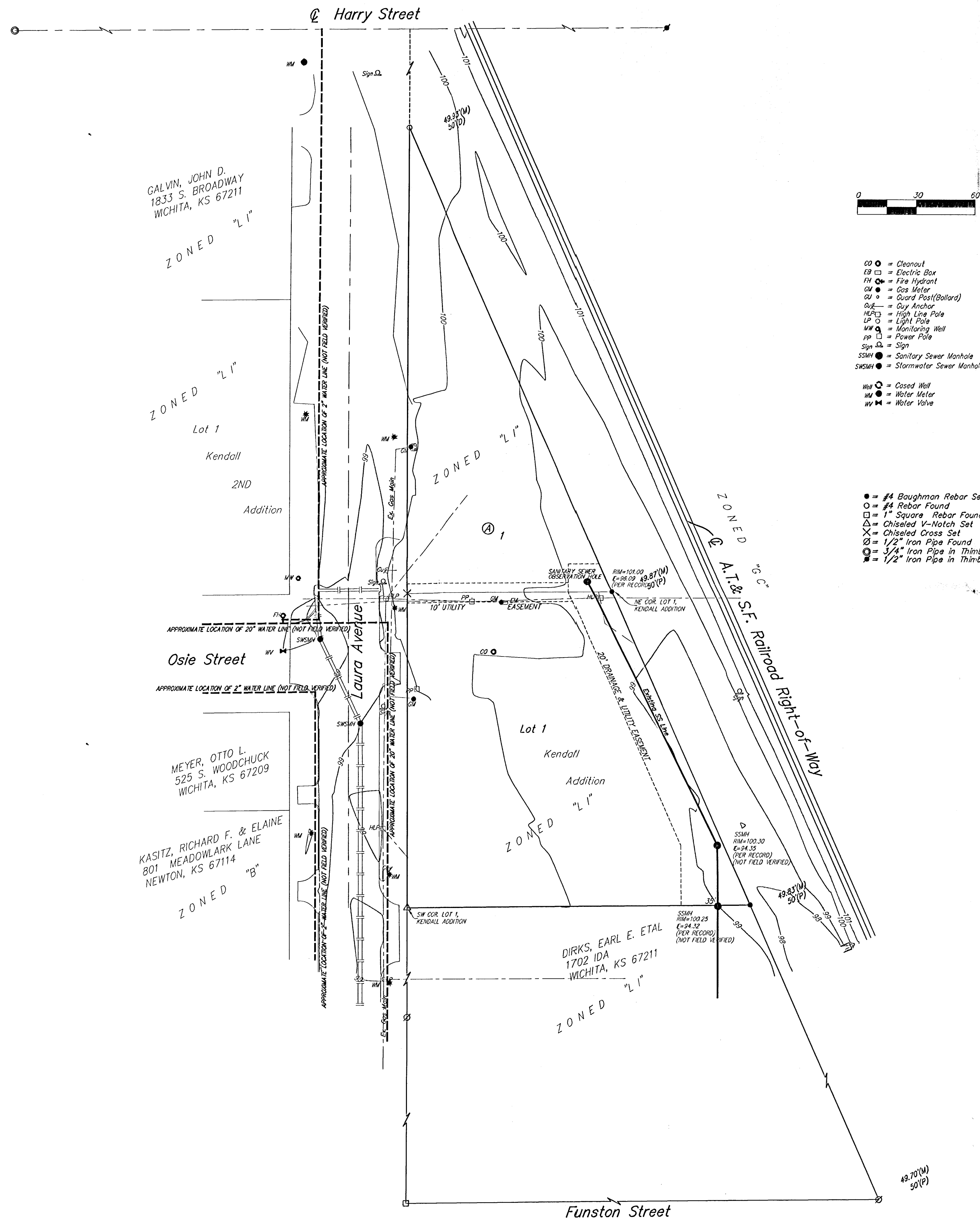


UTILITY PLAN
KENDALL 3RD ADDITION
WICHITA, SEDGWICK COUNTY, KANSAS



State of Kansas) SS We, Baughman Company, P.A., Surveyors in Sedgwick County and state do hereby certify that we have surveyed and platted "KENDALL 3RD ADDITION", Wichita, Sedgwick County, Kansas and that the accompanying plat is a true and correct exhibit of the property surveyed, described as Lot 1, Kendall Addition to Wichita, Sedgwick County, Kansas, TOGETHER with a tract in the NE 1/4 of Sec. 33, Twp. 27, R-1-E of the 6th P.M., Sedgwick County, Kansas, beginning at the intersection of the east line of Laura Ave. and the north line of Osie Ave. extended; thence east 104.7 feet to the west line of the Atchison, Topeka & Santa Fe Railroad right-of-way; thence northwesterly along said right-of-way, 259.8 feet to where the Santa Fe Railroad intersects the east line of Laura Ave.; thence south 237.75 feet to beginning.

Existing easements and dedications being vacated by virtue of K.S.A. 12-512(b).

Baughman Company, P.A.

Michael G. Conroy, Surveyor

Know all men by these presents that we, the undersigned, have caused the land in the surveyors certificate to be platted into a Lot and a Block, to be known as "KENDALL 3RD ADDITION", Wichita, Sedgwick County, Kansas. The utility easements are hereby granted as indicated for the construction and maintenance of all public utilities. The drainage and utility easement is hereby granted as indicated for drainage purposes and for the construction and maintenance of all public utilities.

Larry L. Nighswonger, Sharon L. Nighswonger

D. A. Gutheridge, Rita Gutheridge

State of Kansas) SS The foregoing instrument acknowledged before me, this day of 2000, by Larry L. Nighswonger and Sharon L. Nighswonger, husband and wife.

Notary Public

My App't. Exp. _____

State of Kansas) SS The foregoing instrument acknowledged before me, this day of 2000, by D. A. Gutheridge and Rita Gutheridge, husband and wife.

Notary Public

My App't. Exp. _____

We the undersigned holders of a mortgage on the above described property, do hereby consent to this plat of "KENDALL 3RD ADDITION", Wichita, Sedgwick County, Kansas.

Commerce Bank, N.A.

State of Kansas) SS The foregoing instrument acknowledged before me, this day of 2000, by _____ of Commerce Bank, N.A., on behalf of the bank.

Notary Public

My App't. Exp. _____

This plat of "KENDALL 3RD ADDITION", to Wichita, Sedgwick County, Kansas has been submitted to and approved by the Wichita-Sedgwick County Metropolitan Area Planning Commission, Wichita, Kansas.

Dated this day of 2000, Wichita-Sedgwick County Metropolitan Area Planning Commission

Francis S. Garofalo, Chairman

Marvin S. Krout, Secretary

This plat approved and all dedications shown hereon accepted by the City Council of the City of Wichita, Kansas, this day of 2000.

Bob Knight, Mayor

Pat Burnett, City Clerk

Reviewed in accordance with K.S.A. 58-205 on this day of 2000.

Tricia L. Robella, L.S. #1246, Deputy County Surveyor, Sedgwick County, Kansas

Entered on transfer record this day of 2000.

James Alford, County Clerk

State of Kansas) SS This is to certify that this plat has been filed for record in the office of the Register of Deeds, this day of 2000 at o'clock M; and is duly recorded.

Bill Meek, Register of Deeds

Linda Kizzire, Deputy

