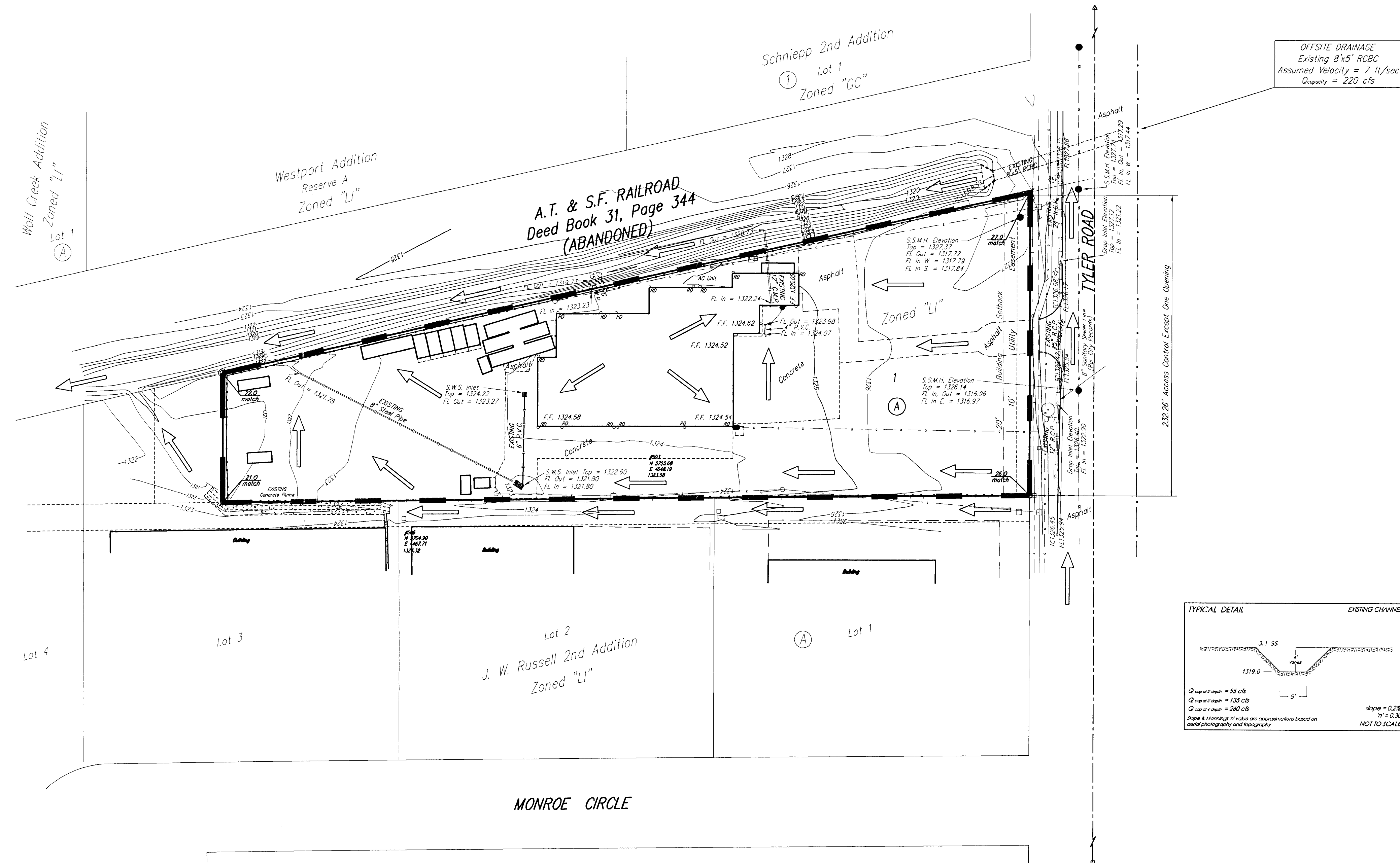


DRAINAGE & GRADING PLAN

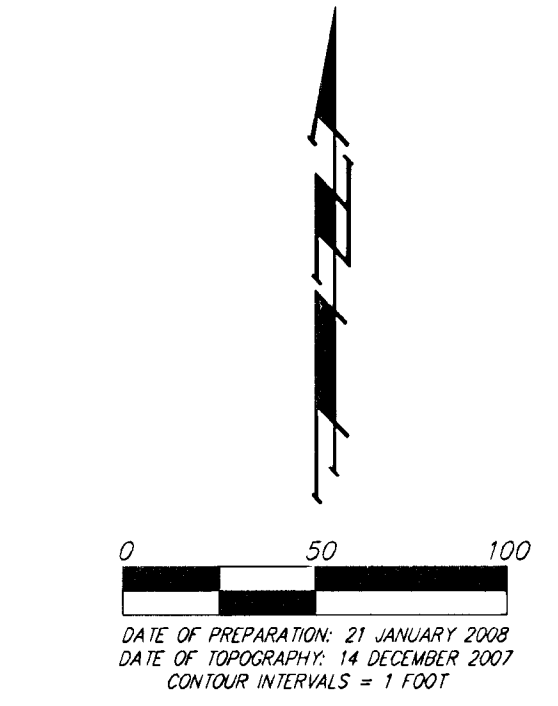
KANSAS TRUCK EQUIPMENT ADDITION

WICHITA, SEDGWICK COUNTY, KANSAS



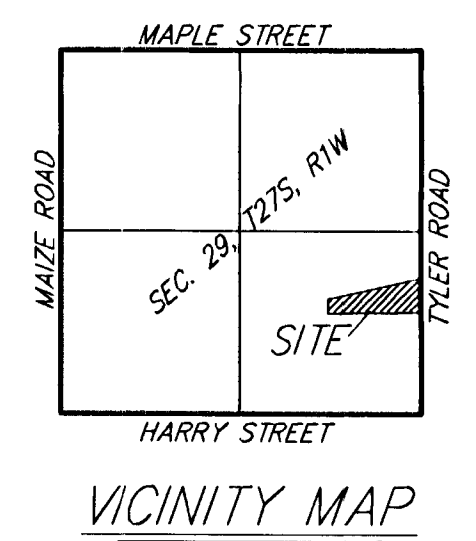
- DI = Drop Inlet
- CB = Catch Basin
- SSMH = Sanitary Sewer Manhole
- MD = Motion Detector Box
- MB = Mail Box
- GM = Gas Meter
- Well = Cased Well
- PP = Power Pole
- LP = Light Pole
- SMB Ped = Southwestern Bell Pedestal
- CP = Cable TV Pedestal
- GU = Guy Anchor
- GU = Guard Post (Ballard)
- RD = Roof Drain
- EB = Electric Box

- Gas Line
- Electric Line
- Sanitary Sewer Line
- Stormwater Sewer Line
- Telephone Line
- Water Line
- Fence Line



- = 1/2" Iron Pipe (Found)
 - = Sedgwick County Disc. in Thimble (Found)
 - △ = 3/4" Iron Pipe in Thimble (Found)
 - = 3/4" Iron Pipe (Found)
 - = #4 Baughman Rebar (Found)
- (M) = Measured
(P) = Plotted
(D) = Described
(C) = Calculated
R/W = Right-of-Way
F.F. = Finished Floor
FL = Flow Line

EXISTING = DEVELOPED
 DA = 2.4 acres
 C' = 0.8 (light industrial)
 Q₂ = 7.4 cfs
 Q₅ = 8.8 cfs
 Q₁₀ = 10 cfs
 Q₁₀₀ = 14 cfs



DRAINAGE & GRADING PLAN
KANSAS TRUCK EQUIPMENT
 21 JANUARY 2008

Baughman Company, P.A.
 315 Ellis St. Wichita, KS 67211 F 316-262-7271 F 316-262-0149

Baughman ENGINEERING | SURVEYING | PLANNING | LANDSCAPE ARCHITECTURE
 F:\HYDRO\Projects\Kansas Truck Equipment\Kansas Truck Equipment-P.draingrade.dwg

OWNER:
 Kansas Truck Equipment Company
 Attn: Maurice Linnens
 1521 S. Tyler Rd.
 Wichita, KS 67217

BENCHMARK:
 Site Bench Mark "3" square cut top center of S.W.S. inlet, 75' N. & 23' E. of the S.E. Property Corner. Elevation = 1326.45 (M.S.L.)