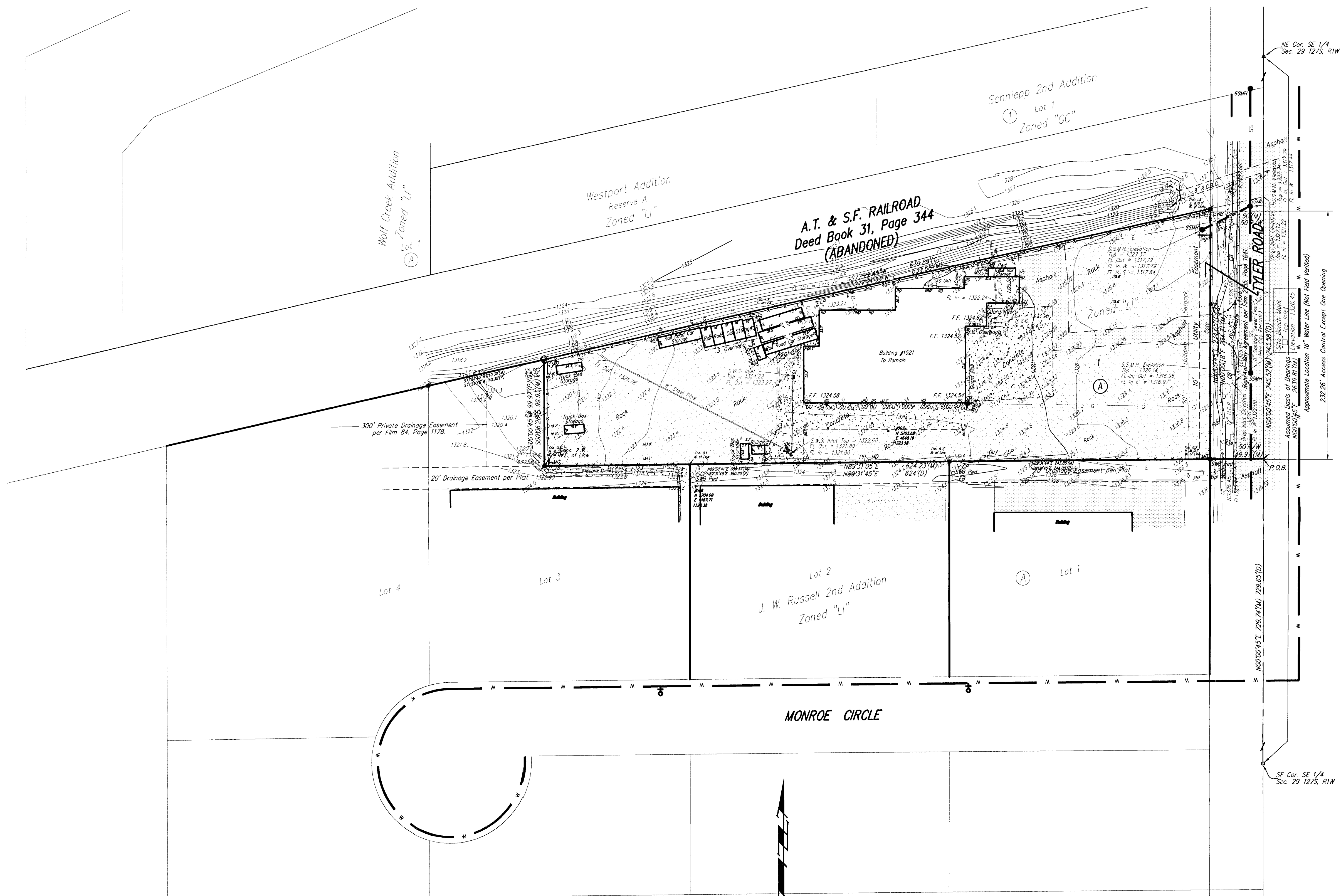


# UTILITY PLAN

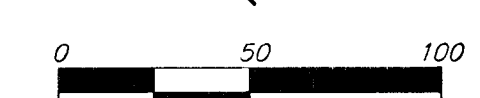
## KANSAS TRUCK EQUIPMENT ADDITION

### WICHITA, SEDGWICK COUNTY, KANSAS



**LEGEND**

	Proposed Water Line (8" Unless Noted Otherwise)
	Existing Water Line (8" Unless Noted Otherwise)
	Proposed Sanitary Sewer Line (8" Unless Noted Otherwise)
	Existing Sanitary Sewer Line (8" Unless Noted Otherwise)
	Proposed Sanitary Sewer Manhole
	Proposed Fire Hydrant
	Proposed Sanitary Sewer Flow



DATE OF PREPARATION: 14 JANUARY, 2008  
 DATE OF TOPOGRAPHY: 14 DECEMBER, 2007  
 CONTOUR INTERVALS = 1 FOOT

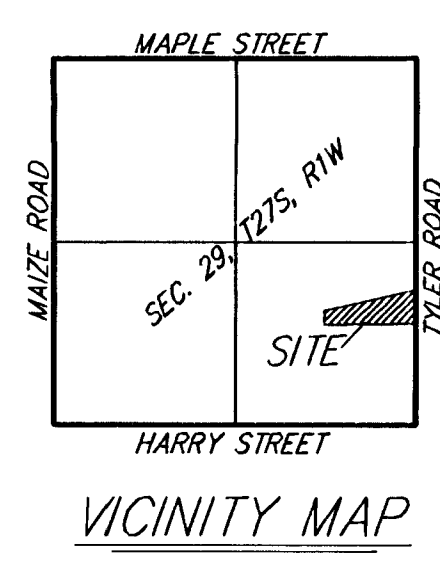
- = 1/2" Iron Pipe (Found)
- = Sedgwick County Disc. in Thimble (Found)
- △ = 3/4" Iron Pipe in Thimble (Found)
- = 3/4" Iron Pipe (Found)
- = #4 Baughman Rebar (Found)

- (M) = Measured
- (P) = Plotted
- (D) = Described
- (C) = Calculated
- R/W = Rights-of-Way
- F.F. = Finished Floor
- FL = Flow Line

**OWNER:**  
 Kansas Truck Equipment Company  
 Attn: Maurice Linnens  
 1521 S. Tyler Rd.  
 Wichita, KS 67277

**BENCHMARK:**  
 Site Bench Mark "a" square cut top center of S.W.S. Inlet, 75' N. & 23' E. of the S.E. Property Corner. Elevation = 1326.45 (M.S.L.)

**NOTE:**  
 A master grading plan for drainage has been developed for this subdivision and is on file with the City of Wichita, Kansas. All drainage easements, right-of-ways, or reserves shall remain at established grades or as modified with the approval of the City Engineer of the City of Wichita, Kansas. No obstructions which impede the flow of this drainage system shall be allowed.



**KANSAS TRUCK EQUIPMENT**  
 14 JANUARY, 2008

**Baughman Company, P.A.**  
 315 Ellis St. Wichita, KS 67211 P 316-262-7271 F 316-262-0149

**Baughman** ENGINEERING | SURVEYING | PLANNING | LANDSCAPE ARCHITECTURE

F:\PLAT\Kansas Truck Equipment\dwg\Kansas Truck Equipment P.dwg