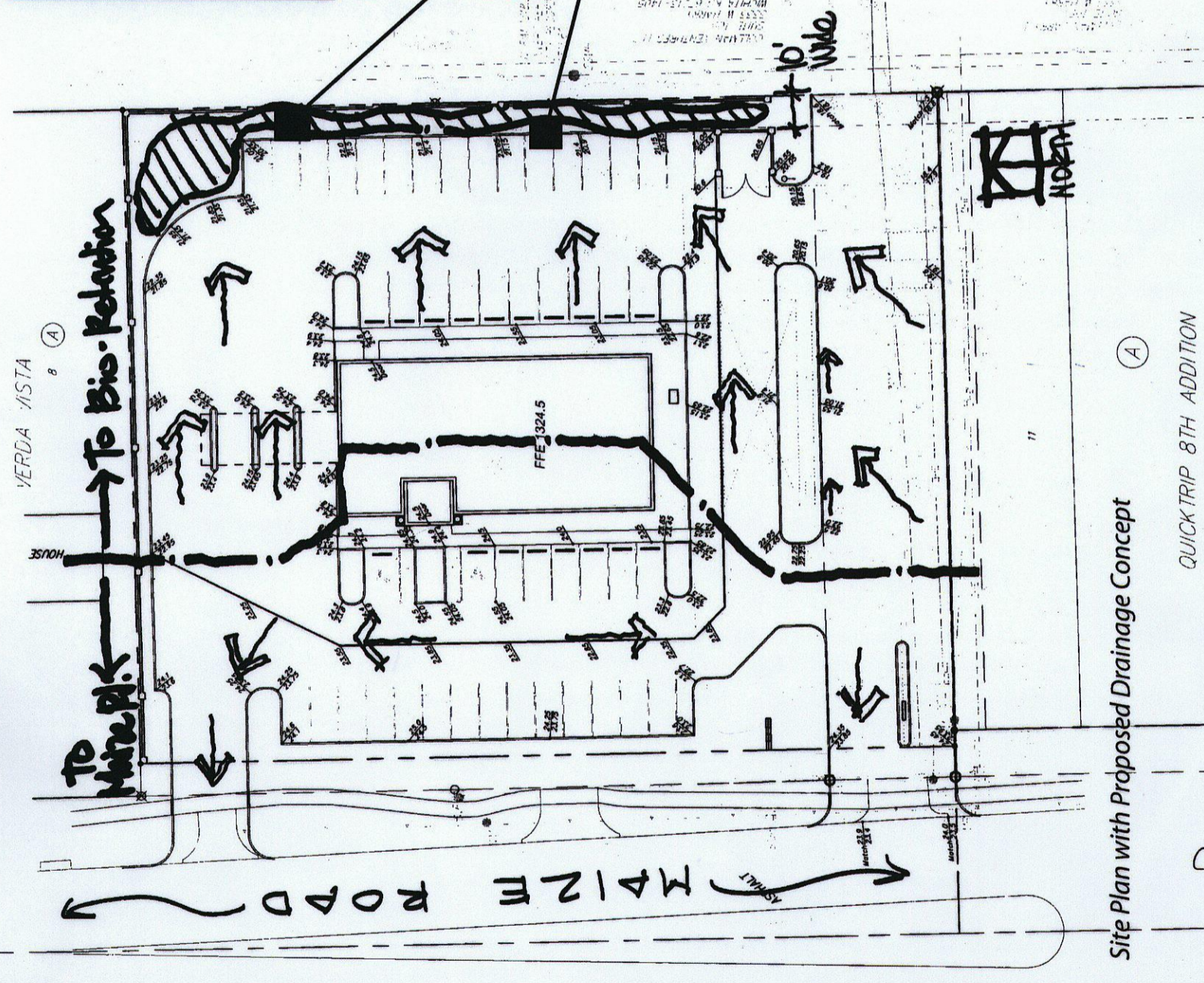


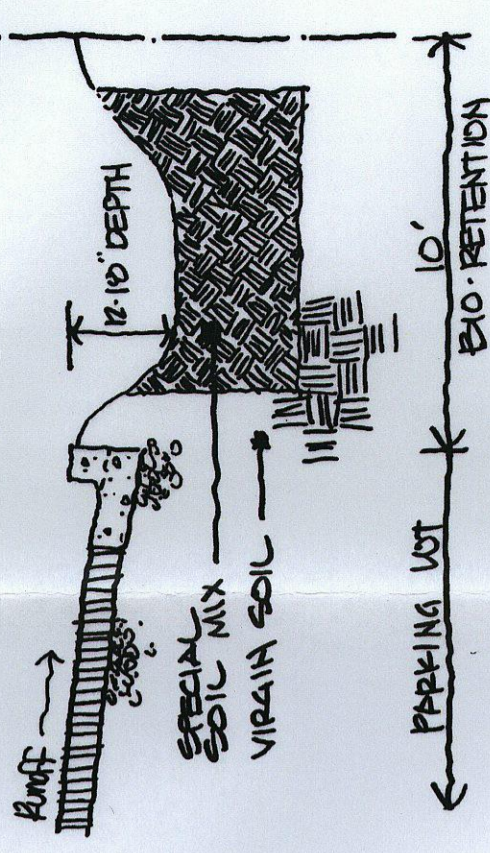
[JUNE 4TH OAB] - PRESENTATION



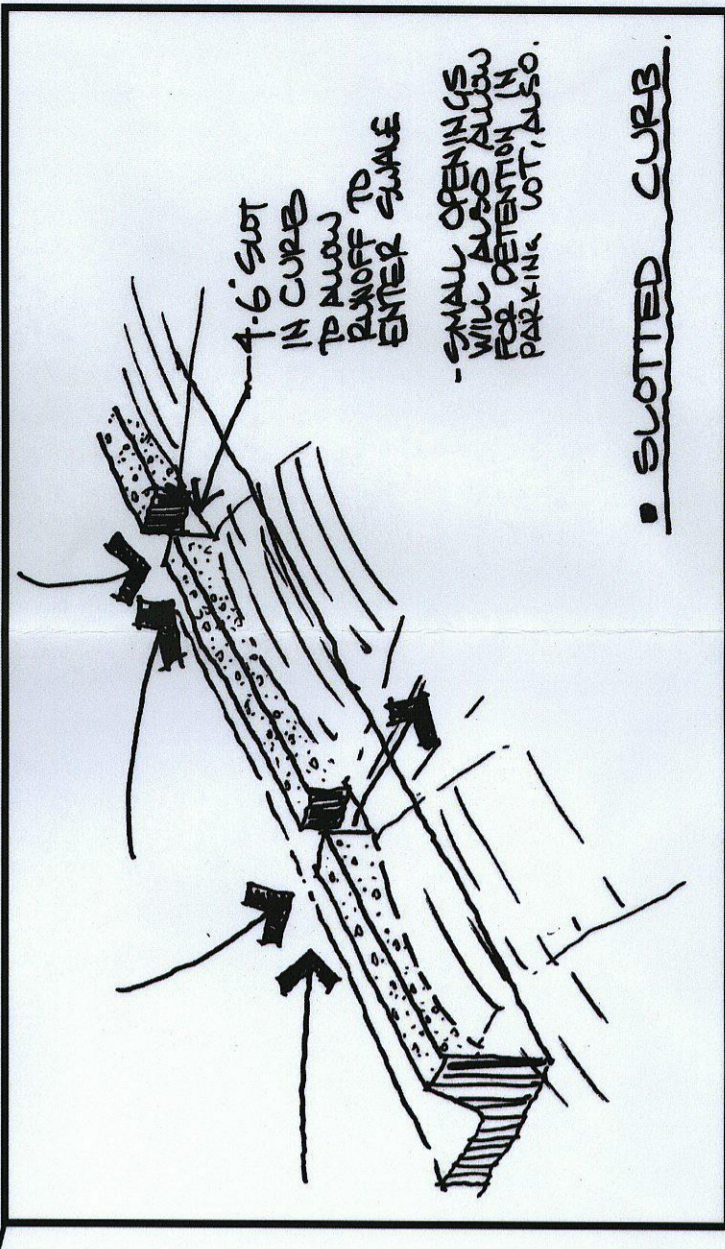
Site Plan with Proposed Drainage Concept
 (A)
 QUICK TRIP 8TH ADDITION

SITE INFORMATION
 Total Site Area: Approx. 1.25 Acres
 Drainage Basins:
 0.45 Acres to Maize Road
 0.80 Acres to Bio-Retention
 Roof Drainage to Be Captured and Piped to Bio-Retention Area.

Bio-Retention
 - Contained within Eastern 10' of Site Backfilled with 36" Deep Special Soil Mix to Promote Storage of Runoff (50% Construction Sand with Compost and Topsoil Making up the Remainder of the Mix (Topsoil not to exceed 5% Clay Content))



Typical Cross-Section Thru Bio-Retention Swale



SLOTTED CURB

Baughman
 ENGINEERING ARCHITECTURE LANDSCAPE ARCHITECTURE

Kansas State Bank- Maize Rd. at Kellogg
 Proposed Drainage Solution