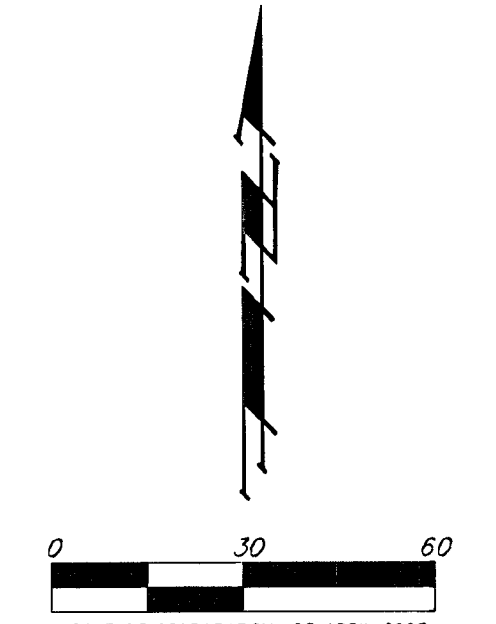
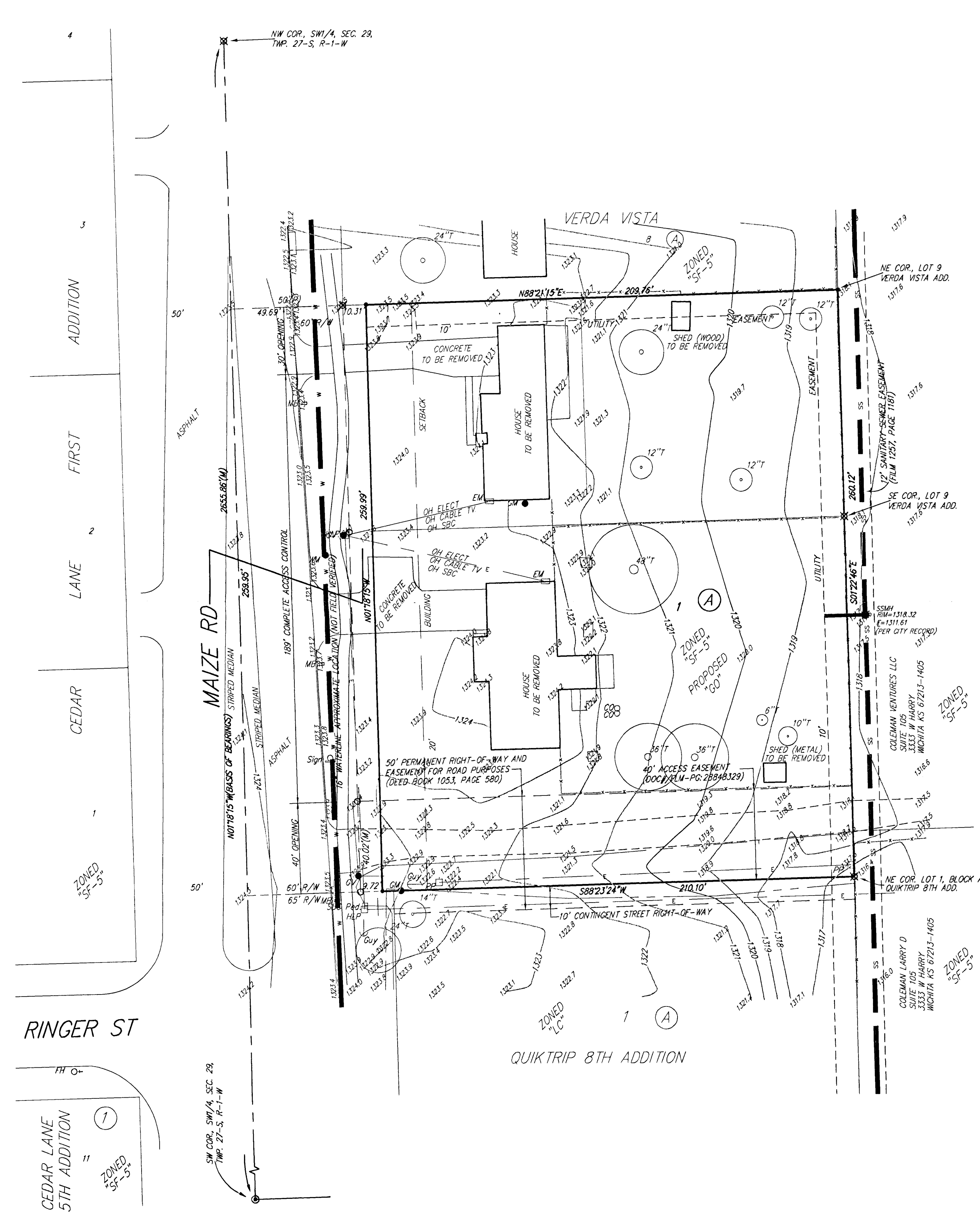


# UTILITY PLAN

## KANSAS STATE BANK ADDITION

### WICHITA, SEDGWICK COUNTY, KANSAS

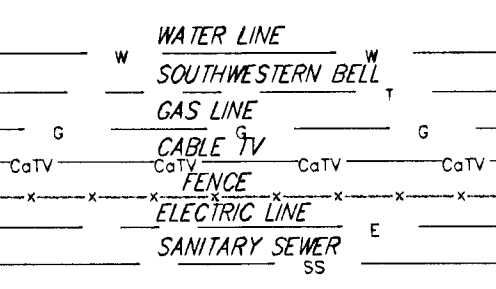


DATE OF PREPARATION: 23 APRIL 2007  
 DATE OF RECORDING: 1 APRIL 2007  
 CONTOUR INTERVALS = 1 FOOT

OWNER:  
 KEY SOUTH, LLC  
 ATTN: JAMES ASHCRAFT  
 716 N. 119TH ST., STE 118  
 WICHITA, KS 67235  
 722-6685

BENCHMARK:  
 CITY DISK SW CORNER OF TRAFFIC SIGNAL POLE  
 WITHIN THE TURN MEDIAN AT THE NE CORNER  
 OF MAIZE & KELLOGG  
 ELEV. = 1323.97 NGVD29

- Guy — = Guy Anchor
  - HLP □ = High Line Pole
  - PP □ = Power Pole
  - EM □ = Electric Meter
  - SBC Ped □ = SBC Pedestal
  - WM ● = Water Meter
  - FH ● = Fire Hydrant
  - GM ● = Gas Meter
  - GV ● = Gas Valve
  - SSMH ● = Sanitary Sewer Manhole
  - CO ○ = Cleargrout
  - MB □ = Mail Box
  - Sign Δ = Sign
- = #4 REBAR W/ "BAUGHMAN" CAP (SET)
  - = #3 REBAR (FOUND)
  - ⊗ = 3/4" IRON (FOUND)
  - ⊙ = 1/2" IRON (FOUND)
  - ⊕ = CROSS (FOUND)



#### LEGEND

- Proposed Water Line (8" Unless Noted Otherwise)
- Existing Water Line (8" Unless Noted Otherwise)
- Proposed Sanitary Sewer Line (8" Unless Noted Otherwise)
- Existing Sanitary Sewer Line (8" Unless Noted Otherwise)
- Proposed Sanitary Sewer Manhole
- ♀ Proposed Fire Hydrant
- XXXX.XX Proposed Sanitary Sewer Flow

NOTE:  
 A drainage plan has been developed for this subdivision and is on file with the City of Wichita, Kansas. Drainage intent shall remain as depicted or as modified with the approval of the City Engineer of the City of Wichita, Kansas. No obstructions which impede the flow of this drainage plan shall be allowed.

