

S.W. Cor., SE 1/4  
Sec. 15, T27S, R2E

SE Cor., SE 1/4  
Sec. 15, T27S, R2E

# PRELIMINARY PLAT KTP ADDITION

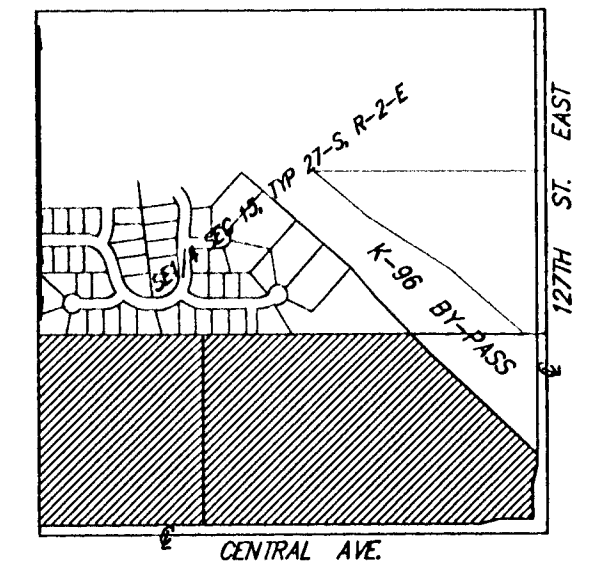
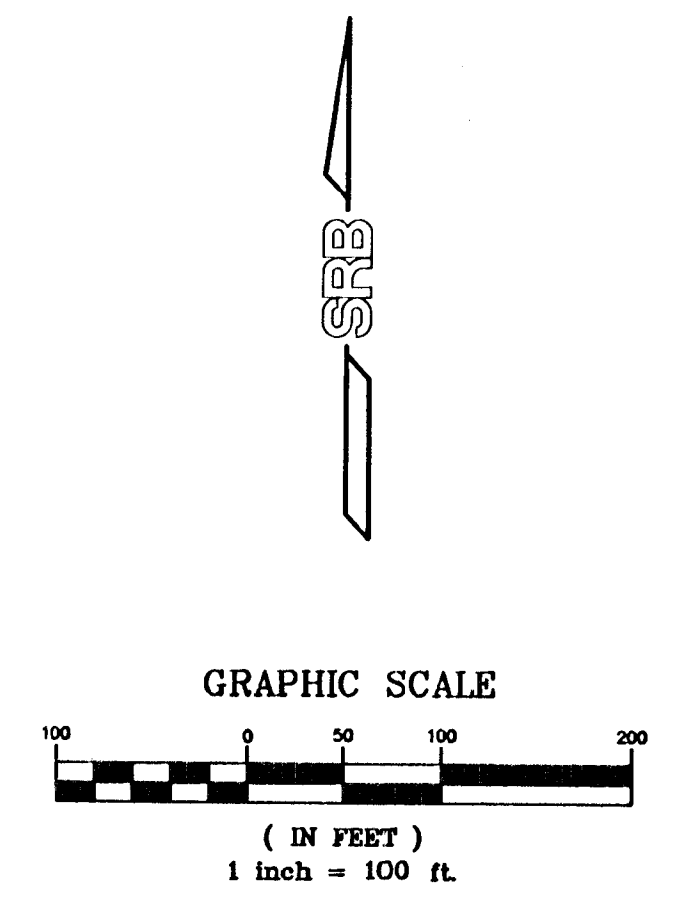
WICHITA, SEDGWICK COUNTY, KANSAS

THIS PLAT IS SUBJECT TO THE REQUIREMENTS SET FORTH  
IN THE KTP CENTER ADDITION C.U.P., D.P.-255.

RESERVE "A" IS TO ALLOW DRAINAGE AND DRAINAGE  
STRUCTURES, LANDSCAPING, LIGHTING, BERMS, IRRIGATION,  
WALKWAYS, GAZEBOS AND OTHER RELATED STRUCTURES,  
PONDS, SIGNAGE, SEATING AREAS, AND UTILITIES CONFINED  
TO EASEMENTS.

OWNER:  
KTP PARTNERSHIP  
3428 E. DOUGLAS, SUITE 2  
Wichita, KS 67208  
Ph. 687-2880

NET SIZE:  
51.13 Acres ±



VICINITY MAP

DWG FILE: 01020PP-R.C.  
PROJECT NO. 99K01020P

**SRB** 924 NORTH MAIN 316-264-8008  
WICHITA, KANSAS 67203 FAX 264-4821  
http://www.felst.com/~srb E-mail: srb@felst.com  
**SAVOY, RUGGLES & BOHM, P.A.**  
ENGINEERING & SURVEYING