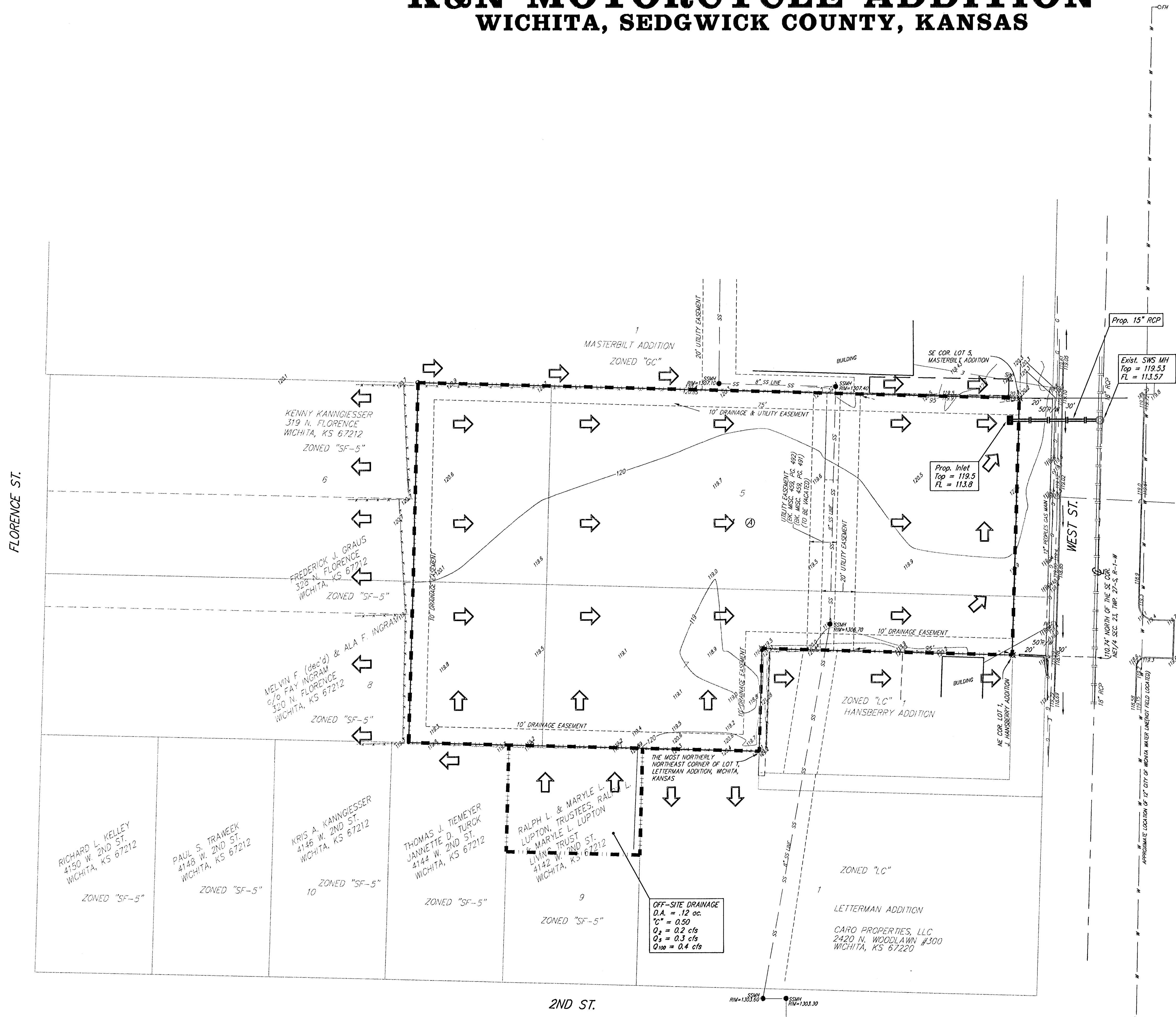


DRAINAGE PLAN

K&N MOTORCYCLE ADDITION

WICHITA, SEDGWICK COUNTY, KANSAS



0 30 60

DATE OF PREPARATION: 28 JANUARY 2002
DATE OF TOPOGRAPHY: 2 JANUARY 2002
CONTOUR INTERVALS = 1 FOOT

- = #1 REBAR W/ "BAUGHMAN" CAP (FOUND)
- = #1 REBAR W/ "BAUGHMAN" CAP (SET)
- ⊙ = #1 REBAR W/ "TILLS" CAP (FOUND)
- ⊙ = 1/2" IRON (FOUND)
- ⊙ = 3/4" IRON (FOUND)
- = "P-X" NAIL & SHINER IN STUMP (FOUND)

(M) = MEASURED
(D) = DESCRIBED
(P) = PLATTED
(C) = CALCULATED

pp □ = Power Pole
Sign ○ = Sign
FH ○ = Fire Hydrant
SSM ● = Sanitary Sewer Manhole
Guy C = Guy Anchor

BENCHMARK:
C&W BENCHMARK, SW CORNER WEST ST. & 2ND ST.
ELEV. = 118.87 CITY DATUM (1306.27 NGVD29)

DRAINAGE NOTES:

- The soil type per Soil Survey of Sedgwick County is Urban Land - Canadian Complex. The hydrologic classification for these soils are a B.
- This parcel of land is located in a Federal Emergency Management Agency (FEMA) ZONE B per FIRM Map 200328 0025B, Effective Date May 15, 1986.

DRAINAGE AREA	EXISTING CONDITIONS	DEVELOPED CONDITIONS
	1.58 acres	1.58 acres
Tc	15 min.	15 min.
1 - 2 yr	3.83 in/hr	3.83 in/hr
1 - 5 yr	4.56 in/hr	4.56 in/hr
1 - 100 yr	7.37 in/hr	7.37 in/hr
10" - 2 yr	0.52	0.54
10" - 5 yr	0.54	0.85
10" - 100 yr	0.68	0.91
10" - 2 yr	3.1 cfs	5.1 cfs
10" - 5 yr	3.9 cfs	6.1 cfs
10" - 100 yr	7.9 cfs	11 cfs

OFF-SITE DRAINAGE
O.A. = 12 ac.
Q₂ = 0.50
Q₅ = 0.2 cfs
Q₁₀₀ = 0.4 cfs

