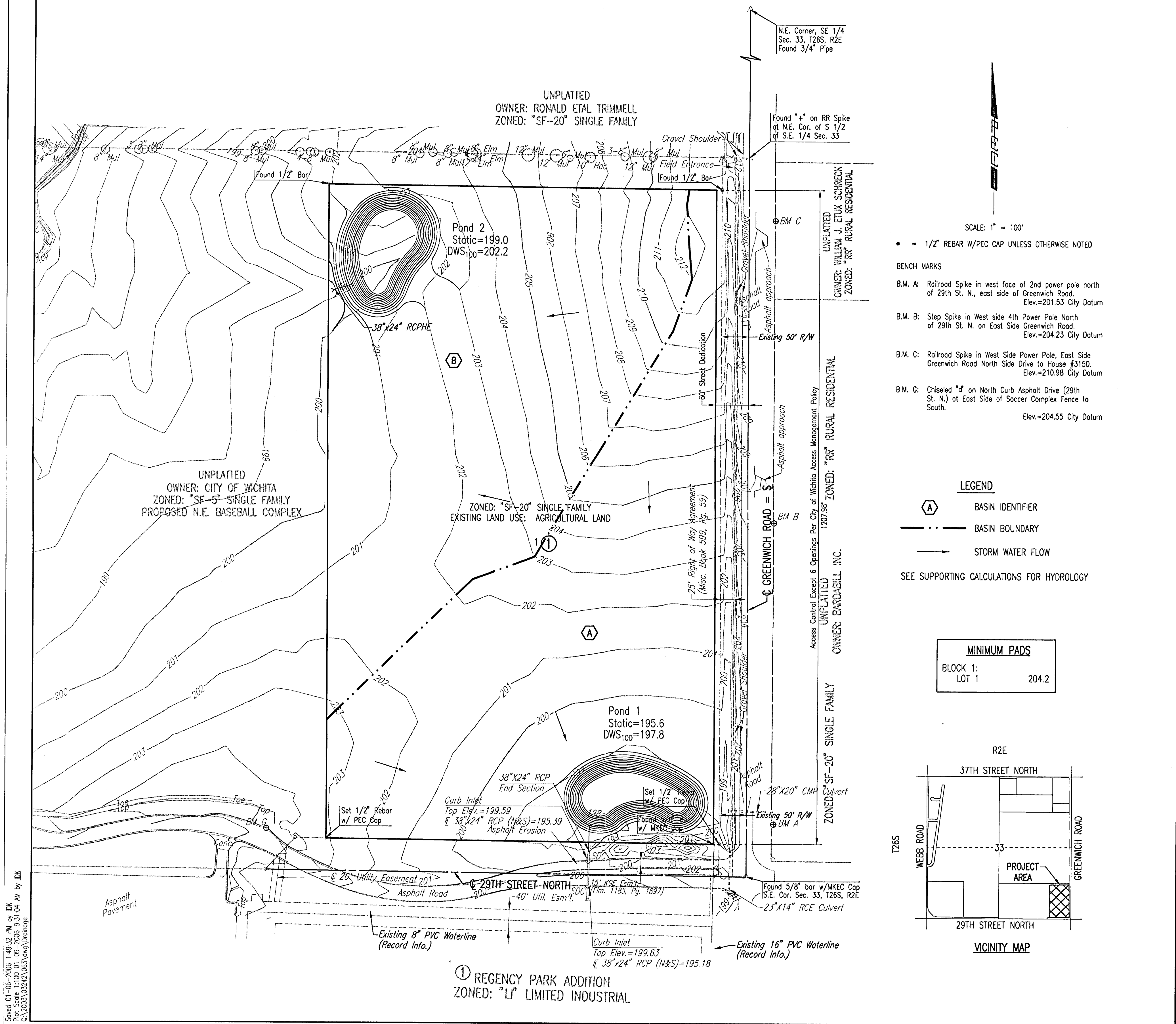


# K-96 BUSINESS PARK

## AN ADDITION TO WICHITA, SEDGWICK COUNTY, KANSAS

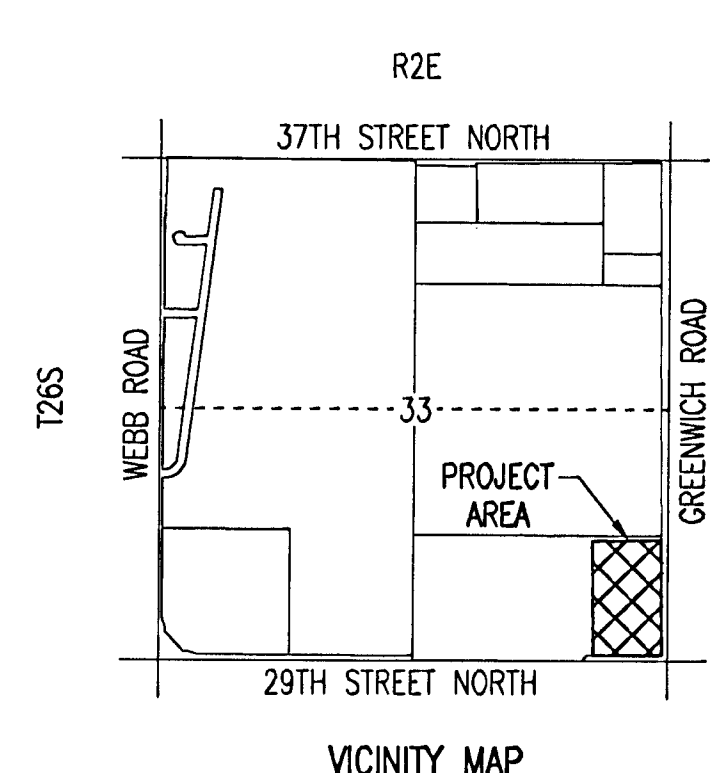
### DRAINAGE PLAN



- SCALE: 1" = 100'
- = 1/2" REBAR W/PEC CAP UNLESS OTHERWISE NOTED
- BENCH MARKS**
- B.M. A: Railroad Spike in west face of 2nd power pole north of 29th St. N., east side of Greenwich Road. Elev.=201.53 City Datum
  - B.M. B: Step Spike in West side 4th Power Pole North of 29th St. N. on East Side Greenwich Road. Elev.=204.23 City Datum
  - B.M. C: Railroad Spike in West Side Power Pole, East Side Greenwich Road North Side Drive to House #3150. Elev.=210.98 City Datum
  - B.M. C: Chiseled "d" on North Curb Asphalt Drive (29th St. N.) at East Side of Soccer Complex Fence to South. Elev.=204.55 City Datum

- LEGEND**
- (A) BASIN IDENTIFIER
  - BASIN BOUNDARY
  - STORM WATER FLOW
- SEE SUPPORTING CALCULATIONS FOR HYDROLOGY

MINIMUM PADS	
BLOCK 1:	204.2
LOT 1	204.2



① REGENCY PARK ADDITION  
ZONED: "LI" LIMITED INDUSTRIAL

Saved 01-06-2006 1:49:32 PM by DK  
 Plot Scale 1:100 01-09-2006 9:31:04 AM by DK  
 P:\003\10242\003\10242.dwg