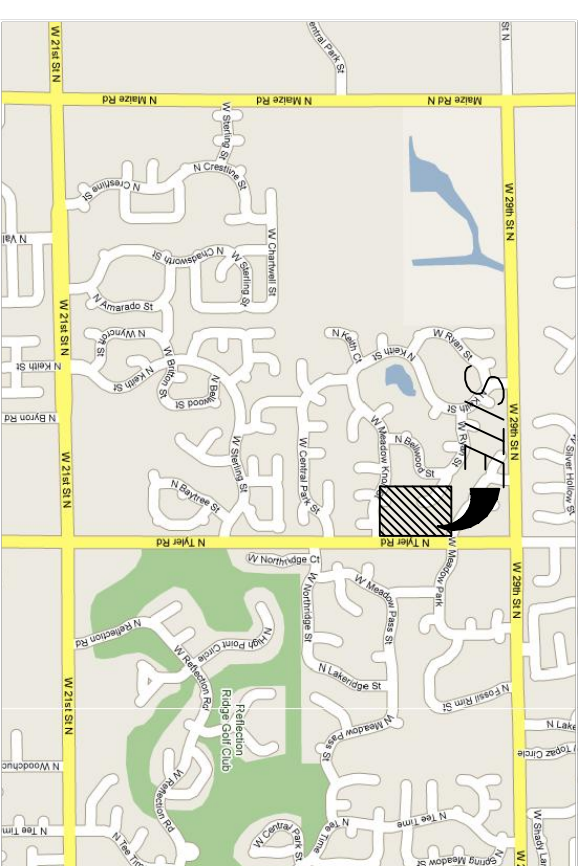


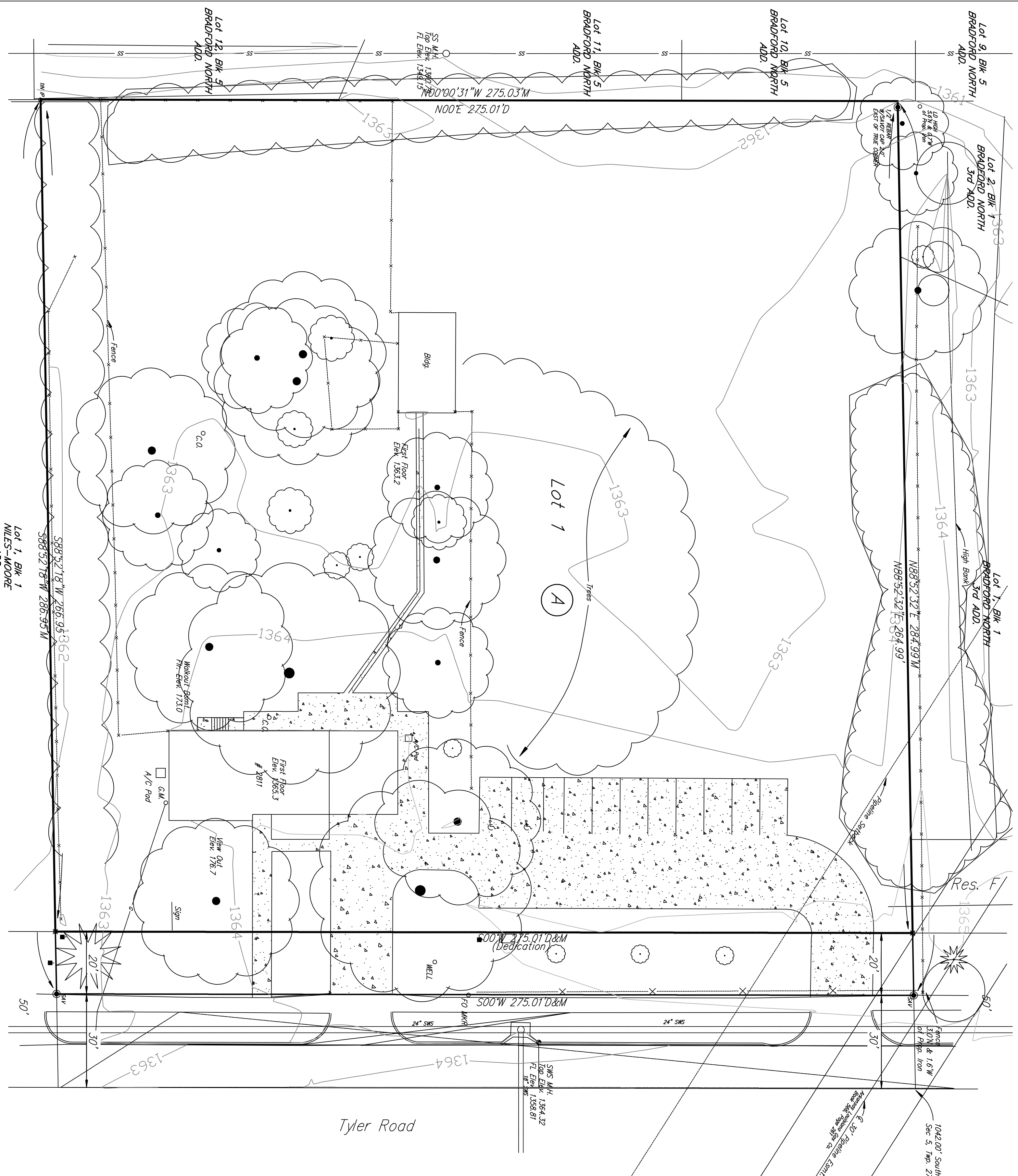
# ONE-STEP PLAT OF Trans-Net Addition WICHITA, SEDGWICK COUNTY, KANSAS

Part of the Northeast 1/4, Section 5, Township 27 South, Range 1 West of the 6th. P.M.

- LEGEND**
- 1/2" Iron Pin (found)
  - ⊗ 5/8" Rebar (not) R.S. #1294
  - ⊗ 1/2" Iron Pin w/Survey cap (found)
  - (P) Platted measurements from record
  - (D) Platted measurements from deed
  - (N) Measured from actual field location
  - ⊕ = Fire Hydrant
  - ⊖ = Water Valve
  - ⊗ = Water Meter
  - ⊗ = Telephone Riser
  - ⊗ = Power Pole
  - ⊗ = Benchmark with elevation
  - = Existing Sanitary Sewer
  - = Existing underground Telephone
  - = Existing Gas Line
  - = Existing Overhead Electric
  - = Existing Water line
  - = Existing Fence
  - = Existing Center line of road



LOCATION MAP



Described as the Trans-Net Addition, Wichita, Sedgwick County, Kansas, beginning 1042 1/2 ft South of the Northeast Corner of the NE 1/4, West 317 ft, South 275 ft, East 317 ft. Excluding existing 30 ft Right-of-Way on Tyler Road.

All being situated in the NE 1/4 of Section 5, Township 27-S, Range 1, West to the 6th P.M., Sedgwick County, Kansas. Said tract contains 1.81 acres ±. All easements and rights-of-way within said lots are hereby vacated by virtue of K.S.A. 12-512(b) amended.

Randall L. Elkins, L.S. #1294  
Date

State of Kansas ) ss  
County of Sedgwick )  
Know all men by these presents, that we, the undersigned, have caused the land described in the surveyor's certificate to be platted into a Lot and Block to be known as Trans-Net Addition, Wichita, Sedgwick County, Kansas. Any easements are hereby granted as indicated for constructing, maintaining, operating, and repairing public utilities. A drainage plan has been developed for the plot and all drainage easements, rights-of-way, or reserves shall remain at established grades as indicated with the approval of the applicable City or County. The plat is subject to all applicable laws, ordinances, and regulations of the City of Wichita, Kansas, and further that the land contained herein is held and shall be conveyed subject to any applicable restrictions, reservations and covenants now on file or hereafter filed in the Office of the Register of Deeds of Sedgwick County, Kansas.

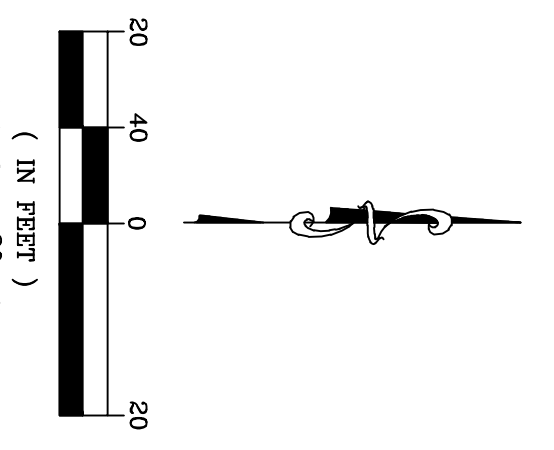
Access Control is hereby granted as follows:  
1. There shall be a maximum of 2 openings on Tyler Road.

By: \_\_\_\_\_ Date \_\_\_\_\_  
Maize USD 266, Superintendent

State of Kansas ) ss  
County of Sedgwick )  
This instrument was acknowledged before me on this \_\_\_\_\_ day of \_\_\_\_\_, 2008, by \_\_\_\_\_

Notary Public  
My Commission Expires: \_\_\_\_\_

B.M. "□" cut in top of curb on north side of curb inlet 1162.95' from the N.E. Cor. of the NE 1/4 of Sec. 5, Twp. 27-S, R-1-W of the 6th P.M. & 30'W of centerline of Tyler Road Elev. 1364.18 (NAVD 88)



State of Kansas ) ss  
County of Sedgwick )  
This instrument was acknowledged before me on this \_\_\_\_\_ day of \_\_\_\_\_, 2008, by \_\_\_\_\_

Notary Public  
My Commission Expires: \_\_\_\_\_

This plat of Transnet Addition, Wichita, Sedgwick County, Kansas, has been submitted to and approved by the Planning Commission, Wichita, Kansas, dated this \_\_\_\_\_ day of \_\_\_\_\_, 2008. Wichita-Sedgwick County Metropolitan Area Planning Commission.

M.S. Mitchell, Chairman  
John L. Schlegel, Secretary

State of Kansas ) ss  
City of Wichita )  
This plat approved and all dedications shown hereon accepted by the City Council of the City of Wichita, Kansas, this \_\_\_\_\_ day of \_\_\_\_\_, 2008.

At the Direction of the City Council  
Carl Brewer, Mayor  
Karen Sublett, City Clerk

Entered on transfer record this \_\_\_\_\_ day of \_\_\_\_\_, 2008.

Donald Brace, County Clerk

State of Kansas ) ss  
County of Sedgwick )  
This is to certify that this plat has been filed for record in the Office of the Register of Deeds of Sedgwick County, Kansas, on this \_\_\_\_\_ day of \_\_\_\_\_, 2008, at \_\_\_\_\_ o'clock \_\_\_\_\_ M., and is duly recorded.

Bill Weck, Register of Deeds

Tonya Buckingham, Deputy

Reviewed in accordance with K.S.A. 58-2005 on this \_\_\_\_\_ day of \_\_\_\_\_, 2008.

Traha L. Robello, L.S. #1246  
Deputy County Clerk  
Sedgwick County, Kansas



Filename: 08128 TRANS-NET.PLA1

516 S. Vermont, Wichita, KS 67202 316/264-0242